



# Persona Homes

by Home Group

## Viridian Meadows

NORTHAMPTON

### NITHSDALE

3-bedroom house

*A wonderful choice for family living.*

The open plan living space with a modern kitchen and integrated appliances is a great space to gather, whether it's for work, rest or play. Two of the bedrooms come with handy storage cupboards and there is also a handy cloakroom. There is room for all!



**Contact us:**

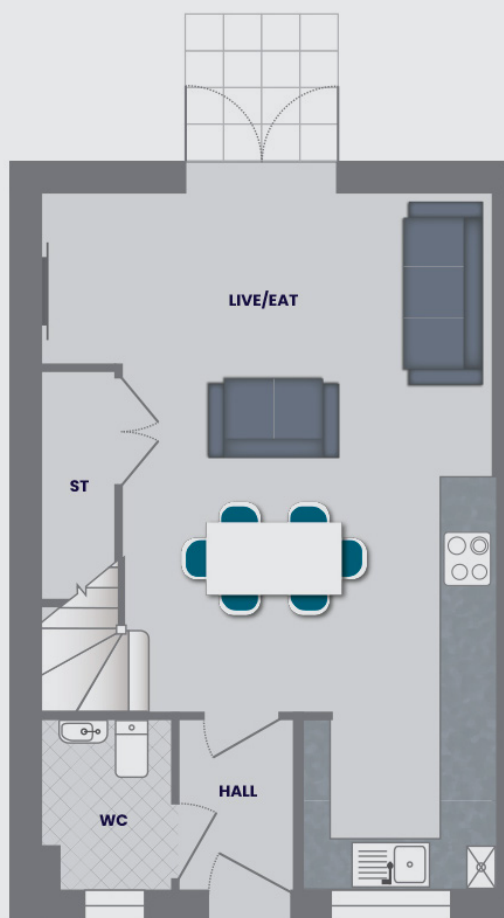
**T:** 0800 030 8888

**E:** [contactus@yourpersonahome.com](mailto:contactus@yourpersonahome.com)

**W:** [yourpersonahome.com](http://yourpersonahome.com)

Eyam Close, Desborough, NN14 2FF

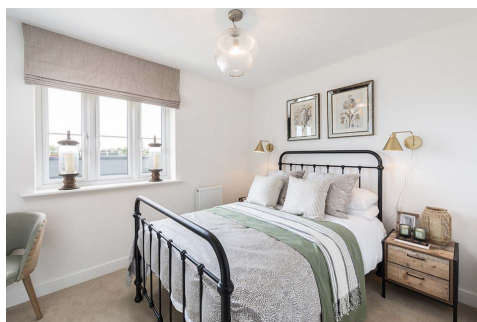
Kitchen/living/dining	8.11m x 5.25m
Bedroom 1	3.97m x 3.01m
Bedroom 2	4.01m x 3.0m
Bedroom 3	3.02m x 2.53m
<b>Total area</b>	<b>83.89m<sup>2</sup></b>



Ground floor



First floor



Any floor plans are a general outline of the layout of the property for guidance only. All measurements are approximate and may vary and any intending purchasers should not rely on them as statements of fact or representations of fact but must satisfy themselves by inspection or otherwise as to their accuracy. Dimensions shown are not intended to be relied upon for installation of appliances or items of furniture or otherwise. CGI's and images are for illustrative purposes only. Specifications are subject to change. Images are indicative only and may be of previous developments.\*Journey times and distances taken from google.com/ maps and are correct before going to print. All times and distances listed are approximate and may vary depending on time of travel.