

Pearson Apartments

Pearson Heights, Whitstable

One Bedroom Apartments

The Sands: Plot 37

Two Bedroom Apartments

The Cove: Plots 35 & 38

The Bay: Plots 36 & 39

The Harbour: Plot 40

The Dune: Plot 41

The Cliff: Plot 42

Three Bedroom Apartments

The Palm: Plots 24 & 29

The Drift: Plots 25

The Shore: Plot 30



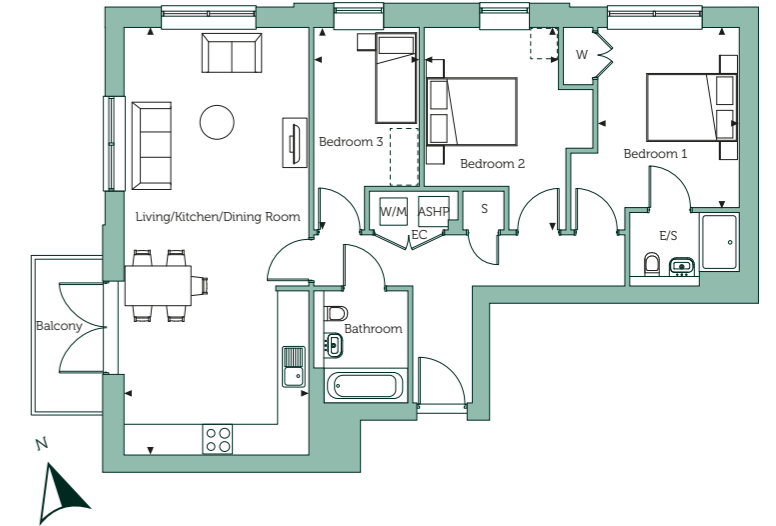
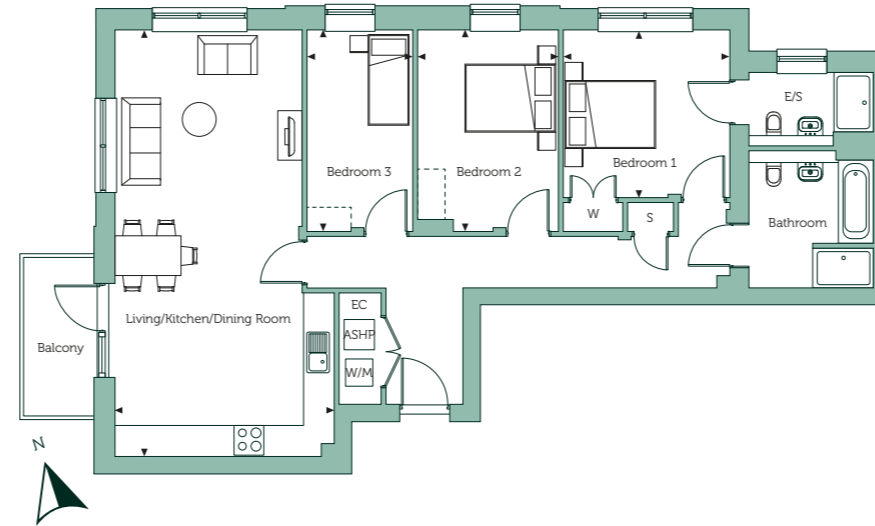
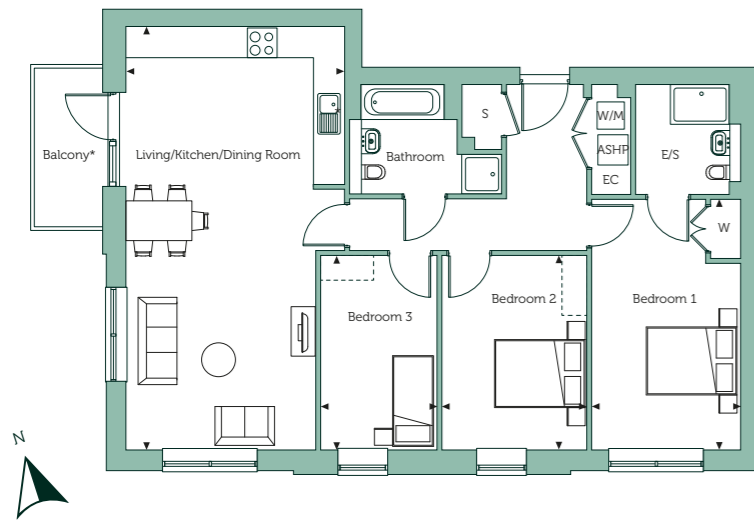
orbithomes.org.uk

☎ 01227 202057

✉ PearsonHeights@orbit.org.uk

The Palm, The Drift & The Shore

Pearson Heights, Whitstable



The Palm 3 bedroom apartment Plot 24† & 29

Living/Kitchen/Dining Room	28'0" x 14'5"	8.54m x 4.41m
Bedroom 1	16'7" x 9'10"	5.06m x 3.01m
Bedroom 2	12'10" x 9'7"	3.93m x 2.94m
Bedroom 3	12'10" x 7'9"	3.93m x 2.36m
Gross Internal Area	1039 sq.ft.	96.5 sq.m.

*Double balcony doors to plot 29

The Drift 3 bedroom apartment Plot 25†

Living/Kitchen/Dining Room	28'2" x 14'5"	8.60m x 4.41m
Bedroom 1	11'1" x 11'0"	3.39m x 3.37m
Bedroom 2	13'4" x 9'4"	4.07m x 2.85m
Bedroom 3	13'4" x 7'0"	4.07m x 2.15m
Gross Internal Area	1057 sq.ft.	98.2 sq.m.

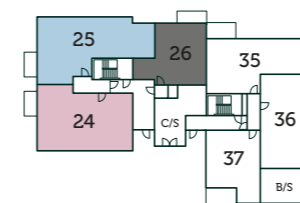
The Shore 3 bedroom apartment Plot 30

Living/Kitchen/Dining Room	28'2" x 12'2"	8.60m x 3.72m
Bedroom 1	11'10" x 9'4"	3.61m x 2.85m
Bedroom 2	13'4" x 8'11"	4.07m x 2.72m
Bedroom 3	13'4" x 7'0"	4.07m x 2.15m
Gross Internal Area	921 sq.ft.	85.6 sq.m.

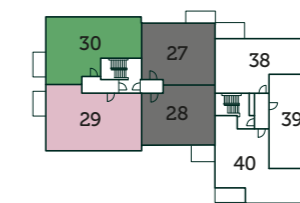
Key

ASHP Air Source Heat Pump S Store Cupboard EC Electrical Cupboard W Fitted Wardrobe ∷ Wardrobe Space W/M Washing Machine
 ■ Affordable Rent C/S Cycle Store B/S Bin Store

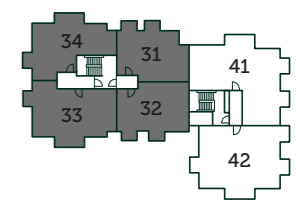
Floorplans are not drawn to scale. Measurements are taken from areas marked with an arrow. They are maximum approximate dimensions and given as a guide only. These should not be used as a basis for purchasing flooring or furniture. Orbit reserve the right to alter plans, specifications, position of doors and windows and change tenure subject to demand without prior notice. External elevations vary from plot to plot. Please ask your Sales Consultant for current information when reserving your new home. Information correct at time of going to print. Computer generated image overlaid.
 † Plots 24 & 25 are wheelchair accessible and capable of being adapted.



Ground Floor



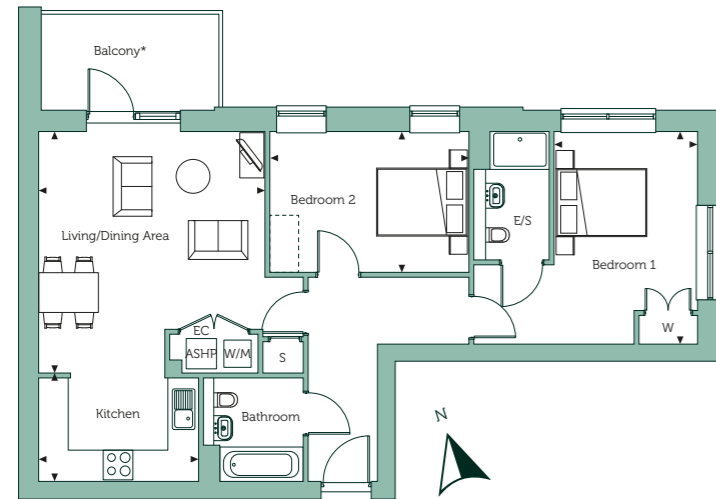
First Floor



Second Floor

The Cove, The Bay & The Sands

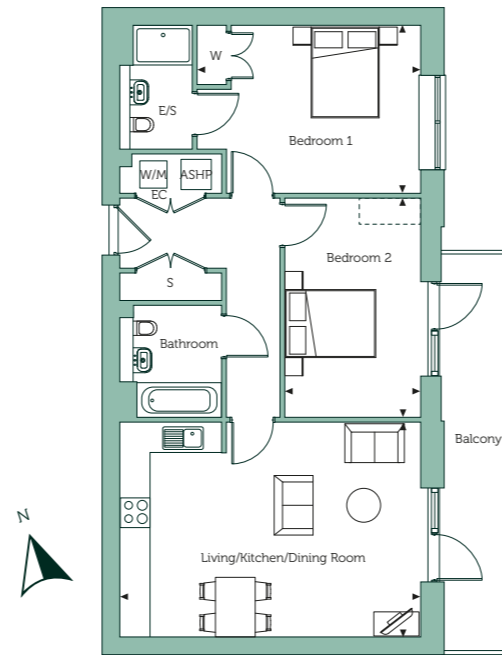
Pearson Heights, Whitstable



The Cove 2 bedroom apartment Plot 35† & 38

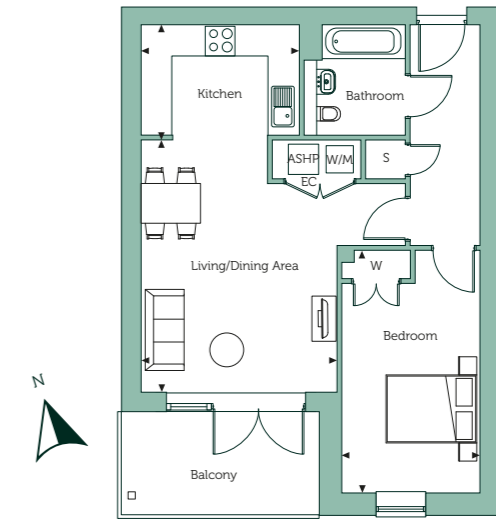
Kitchen 7'1" x 10'7"	2.17m x 3.22m
Living/Dining Area 16'0" x 15'0"	4.87m x 4.57m
Bedroom 1 14'1" x 9'6"	4.29m x 2.90m
Bedroom 2 9'4" x 13'3"	2.86m x 4.04m
Gross Internal Area 818 sq.ft.	76.0 sq.m.

*Double balcony doors to plot 38



The Bay 2 bedroom apartment Plot 36† & Plot 39

Living/Kitchen/Dining Room 14'2" x 19'10"	4.33m x 6.06m
Bedroom 1 11'1" x 14'9"	3.39m x 4.50m
Bedroom 2 14'6" x 9'0"	4.44m x 2.75m
Gross Internal Area 805 sq.ft.	74.8 sq.m.



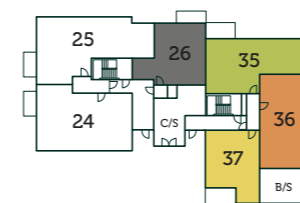
The Sands 1 bedroom apartment Plot 37†

Kitchen 7'6" x 10'5"	2.31m x 3.18m
Living/Dining Area 16'8" x 12'11"	5.10m x 3.96m
Bedroom 16'1" x 9'1"	4.90m x 2.79m
Gross Internal Area 607 sq.ft.	56.4 sq.m.

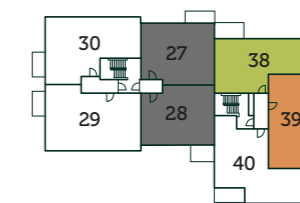
Key

ASHP Air Source Heat Pump S Store Cupboard EC Electrical Cupboard W Fitted Wardrobe ∷ Wardrobe Space W/M Washing Machine
 ■ Affordable Rent C/S Cycle Store B/S Bin Store

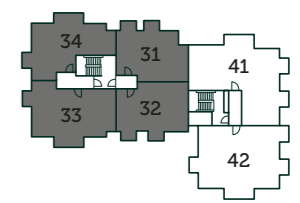
Floorplans are not drawn to scale. Measurements are taken from areas marked with an arrow. They are maximum approximate dimensions and given as a guide only. These should not be used as a basis for purchasing flooring or furniture. Orbit reserve the right to alter plans, specifications, position of doors and windows and change tenure subject to demand without prior notice. External elevations vary from plot to plot. Please ask your Sales Consultant for current information when reserving your new home. Information correct at time of going to print. Computer generated image overlaid.
 † Plots 35, 36 & 37 are wheelchair accessible and capable of being adapted.



Ground Floor



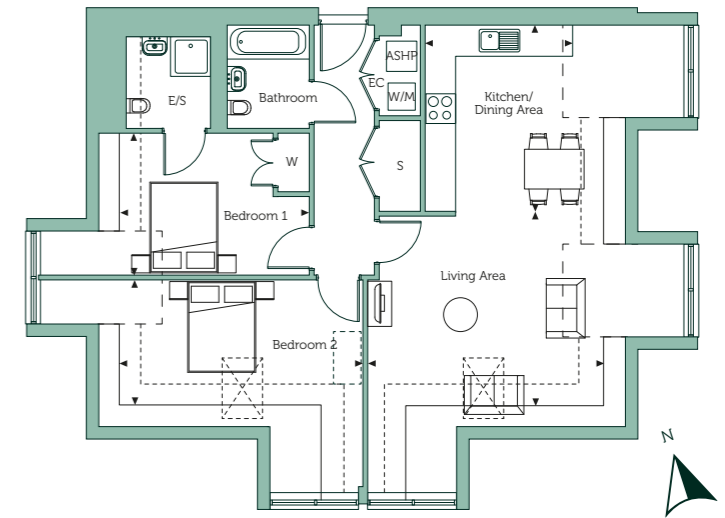
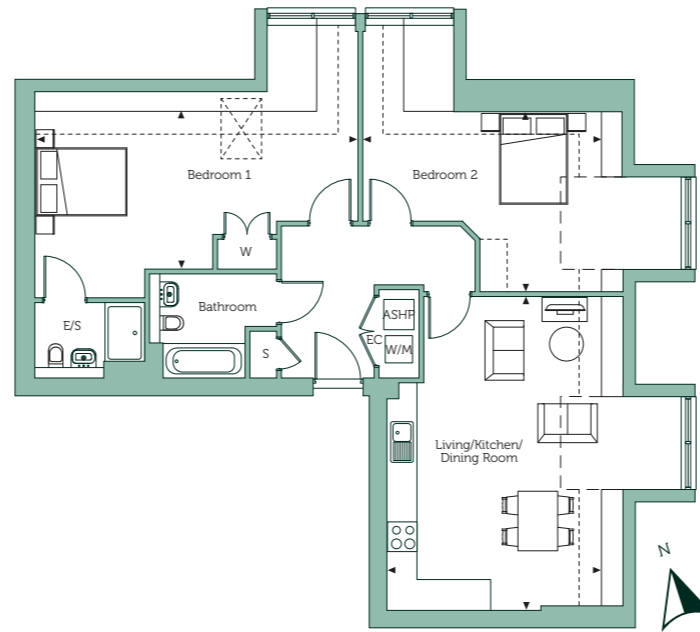
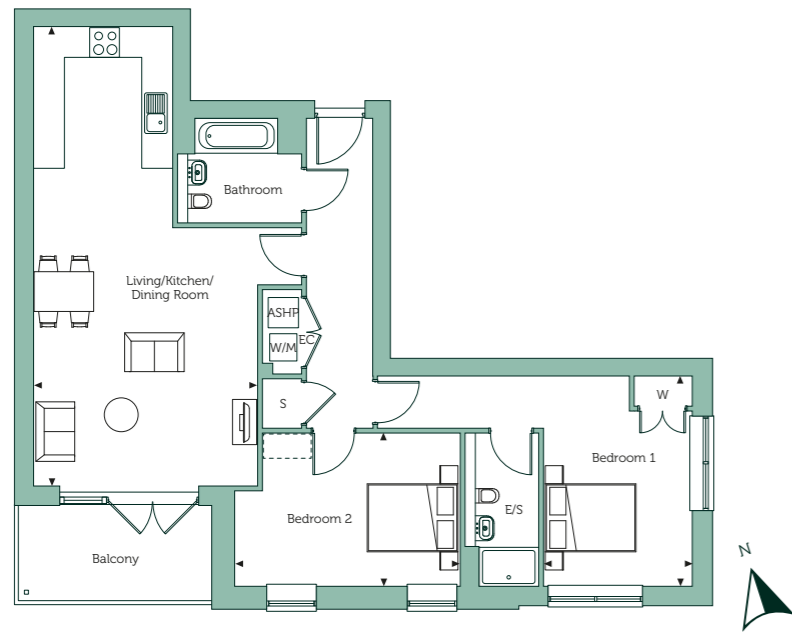
First Floor



Second Floor

The Harbour, The Dune & The Cliff

Pearson Heights, Whitstable



The Harbour

2 bedroom apartment

Plot 40

Living/Kitchen/Dining Room	30'4" x 14'10"	9.26m x 4.52m
Bedroom 1	13'11" x 9'8"	4.24m x 2.95m
Bedroom 2	10'2" x 14'11"	3.11m x 4.55m
Gross Internal Area	956 sq.ft.	88.8 sq.m.

The Dune

2 bedroom apartment

Plot 41

Living/Kitchen/Dining Room	21'0" x 14'4"	6.40m x 4.39m
Bedroom 1	10'6" x 21'8"	3.20m x 6.61m
Bedroom 2	12'1" x 15'11"	3.68m x 4.87m
Gross Internal Area	1006 sq.ft.	93.5 sq.m.

The Cliff

2 bedroom apartment

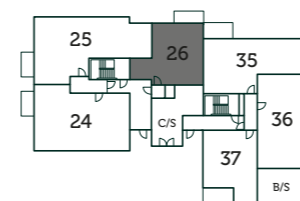
Plot 42

Kitchen/Dining Area	12'5" x 9'9"	3.80m x 2.99m
Living Area	12'8" x 15'10"	3.87m x 4.83m
Bedroom 1	9'5" x 12'8"	2.89m x 3.88m
Bedroom 2	8'5" x 16'3"	2.56m x 4.96m
Gross Internal Area	966 sq.ft.	89.7 sq.m.

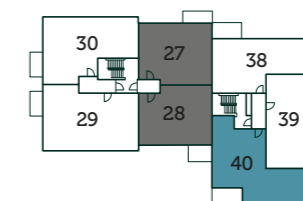
Key

ASHP Air Source Heat Pump S Store Cupboard EC Electrical Cupboard W Fitted Wardrobe ☐ Wardrobe Space W/M Washing Machine
 ☐ Roof Light ——— 1.5m height - - - - - 1.8m height - - - - - 2.1m height ■ Affordable Rent C/S Cycle Store B/S Bin Store

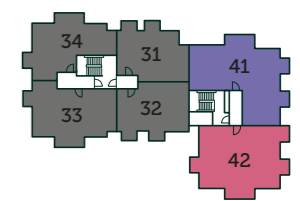
Floorplans are not drawn to scale. Measurements are taken from areas marked with an arrow. They are maximum approximate dimensions and given as a guide only. These should not be used as a basis for purchasing flooring or furniture. Orbit reserve the right to alter plans, specifications, position of doors and windows and change tenure subject to demand without prior notice. External elevations vary from plot to plot. Please ask your Sales Consultant for current information when reserving your new home. Information correct at time of going to print. Computer generated image overleaf.



Ground Floor



First Floor



Second Floor



orbithomes.org.uk

 01227 202057

 PearsonHeights@orbit.org.uk