

Flat 34 Taylor Point, 47 St Johns Road, Watford, WD17 1DF

2 bedroom apartment for Shared Ownership from £100,500 for a 30% share

Property overview Two-bedroom, fourth floor apartment comprising two great-sized bedroom, open-plan kitchen/living room, ample storage the main bathroom and access to a private balcony.



Specification

- 990 year lease
- Council Tax Band D
- Newark cottage internal doors
- Walls/ceiling & woodwork in White Mist
- Minoli Foster Light tiling to kitchen
- Amtico Nordic Oak flooring to kitchen, hallway and living room
- Light grey fitted carpets to bedrooms
- Handleless wall base cupboards in kitchen
- Integrated fridge/freezer, hob, dishwasher and extractor hood
- Stainless steel bowl sink and splash back
- Pure white Roca bathroom and WC suite
- Glass shower screen & thermostatic mixer tap
- Heated towel rail
- Service charge inclusive of building insurance

Features include:



2 bedroom apartment



7 minutes walk from Watford Junction station



Located in Watford

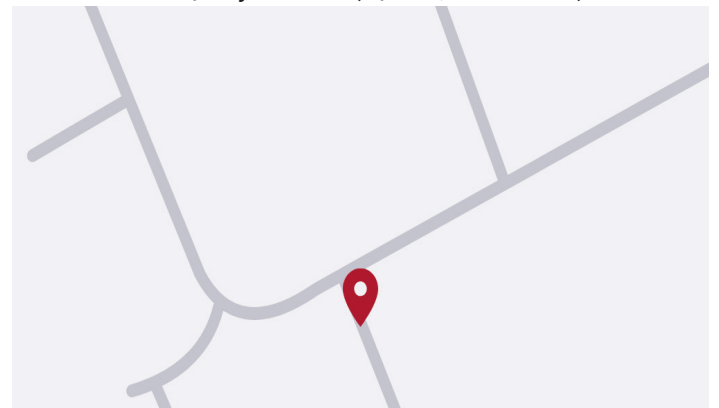


Superb specification



Kitchen with integrated appliances

Location 34 Taylor Point, 47 St Johns Road, WD17 1DF



Call: 020 7539 3745 **Email:** thrive@redloft.co.uk

Visit: redloftproperty.co.uk/thrive

Disclaimer: We have made every effort to accurately describe the property in this brochure. However, prospective buyers should treat these details as a general guide, not as definitive representations or facts. All homes are sold as

Thrive

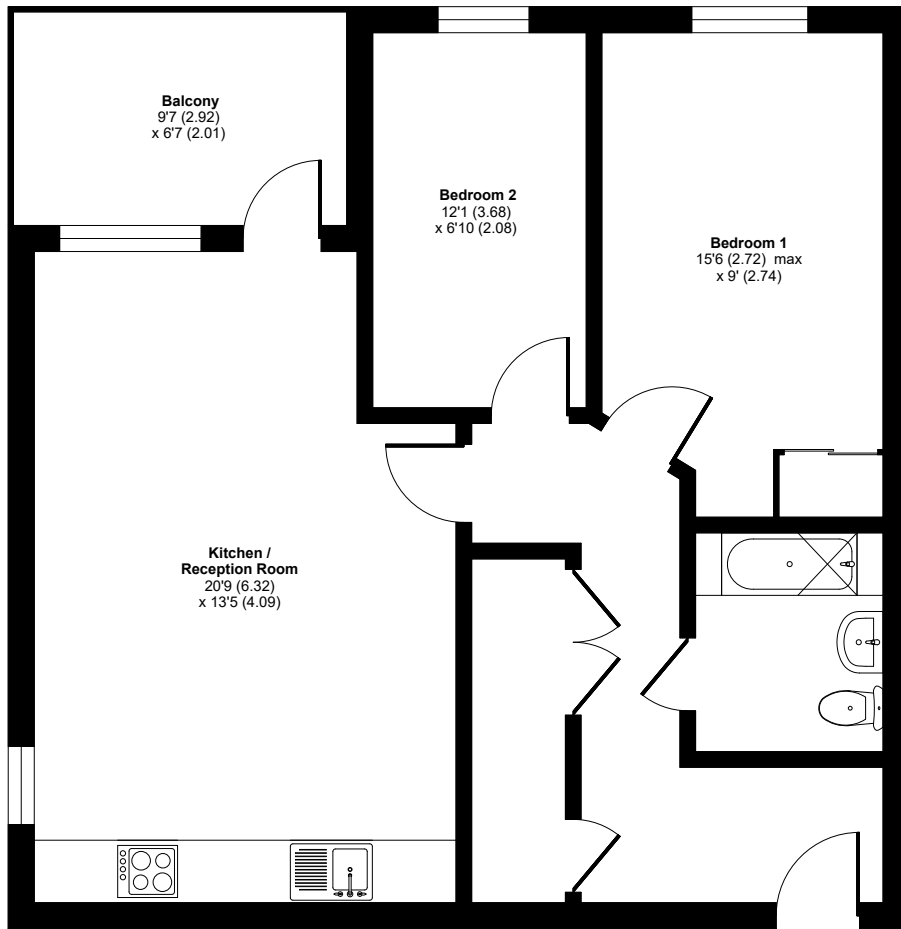
SELLING

redloft

St. Johns Road, Watford, WD17

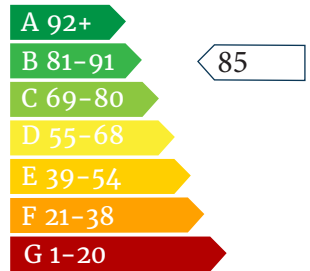
Approximate Area = 680 sq ft / 63.1 sq m

For identification only - Not to scale

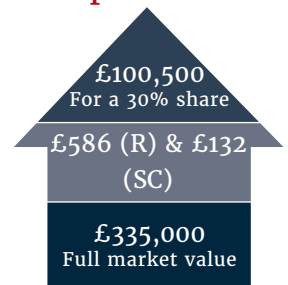


GROUND FLOOR

Energy Performance



Shared Ownership Example



Rent & service charges are monthly. Rent charged at 3% on unsold share.



Floor plan produced in accordance with RICS Property Measurement Standards incorporating International Property Measurement Standards (IPMS2 Residential). © nchecon 2024. Produced for Red Loft Limited Liability Partnership. REF: 1165096



Call: 020 7539 3745 Email: thrive@redloft.co.uk
Visit: redloftproperty.co.uk/thrive

Disclaimer: The floor plans are for reference only and are not to scale. Dimensions and layouts are approximate. Prospective buyers should independently verify all details.

Thrive

SELLING

