

Flat 57 Taylor Point, 47 St Johns Road, Watford, WD17 1DF

2 bedroom apartment for Shared Ownership from £109,500 for a 30% share

Property overview High specification two-bedroom, second floor apartment in a brilliant location. This home benefits from two great-sized bedroom, open-plan kitchen/living room, the main bathroom and access to a private balcony.



Specification

- 990 year lease
- Council Tax Band D
- Newark cottage internal doors
- Walls/ceiling & woodwork in White Mist
- Minoli Foster Light tiling to kitchen
- Amtico Nordic Oak flooring to kitchen, hallway and living room
- Light grey fitted carpets to bedrooms
- Handleless wall base cupboards in kitchen
- Integrated fridge/freezer, hob, dishwasher and extractor hood
- Stainless steel bowl sink and splash back
- Pure white Roca bathroom and WC suite
- Glass shower screen & thermostatic mixer tap
- Heated towel rail
- Service charge inclusive of building insurance

Features include:



2 bedroom apartment



7 minutes walk from Watford Junction station



Located in Watford

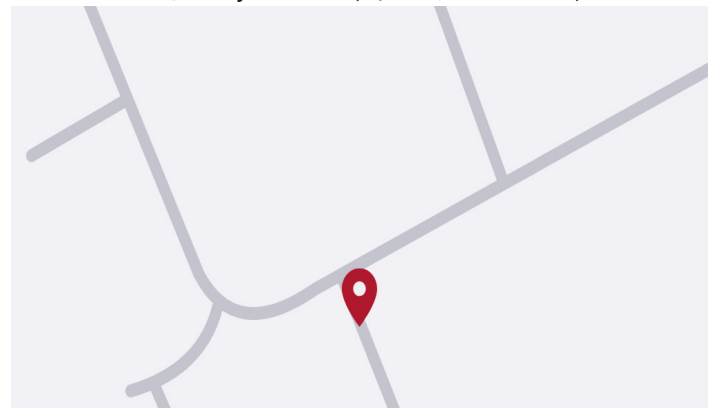


Superb specification



Kitchen with integrated appliances

Location 57 Taylor Point, 47 St Johns Road, WD17 1DF



Call: 020 7539 3745 **Email:** thrive@redloft.co.uk

Visit: redloftproperty.co.uk/thrive

Disclaimer: We have made every effort to accurately describe the property in this brochure. However, prospective buyers should treat these details as a general guide, not as definitive representations or facts. All homes are sold as seen.

Thrive

SELLING

redloft

Flat 57 Taylor Point, 47 St Johns Road, Watford,

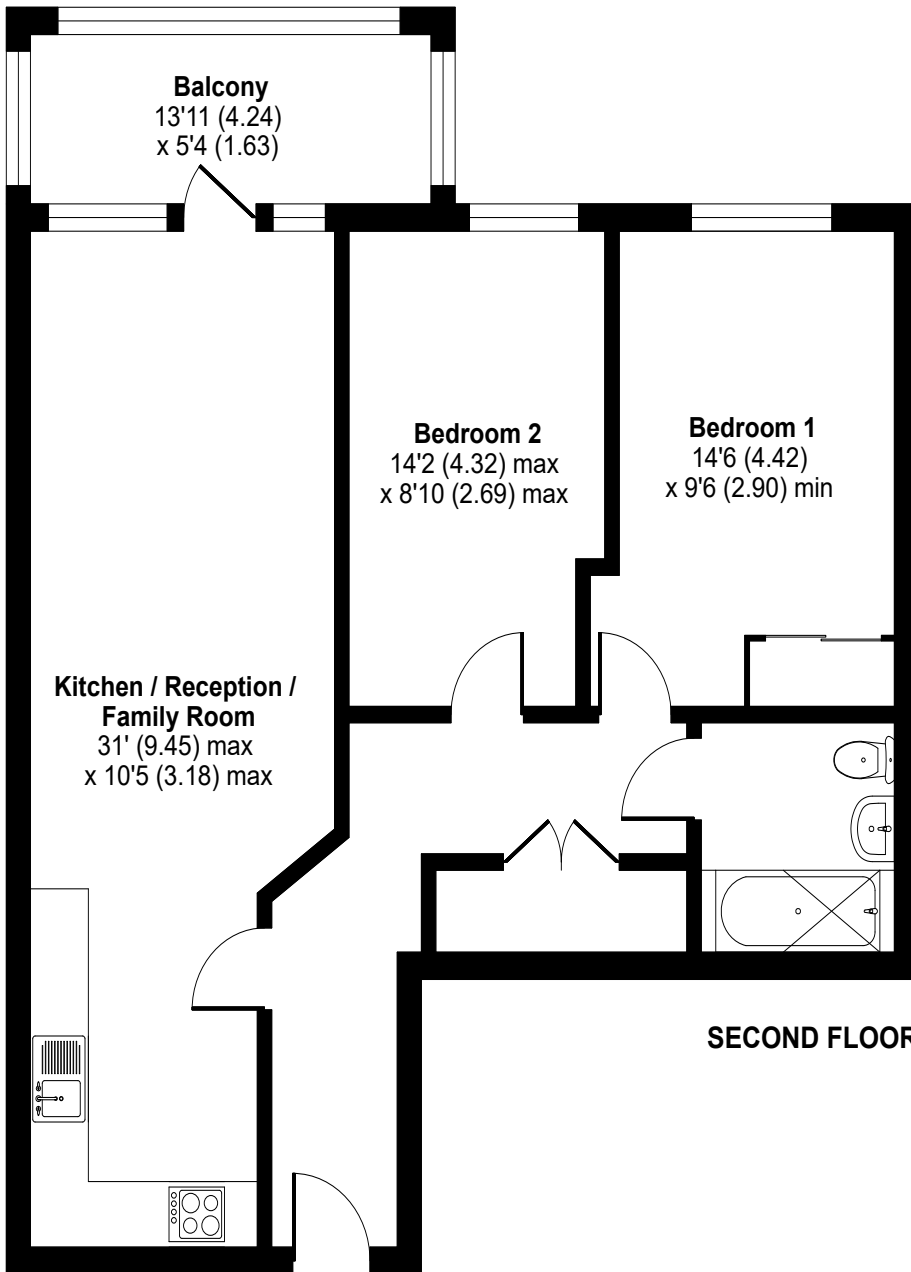
WD17 1DF

Floor Plan

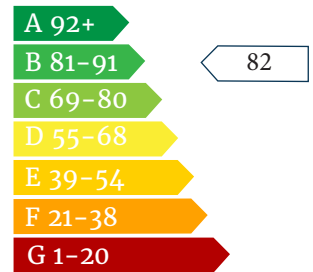
St. Johns Road, Watford, WD17

Approximate Area = 770 sq ft / 71.5 sq m

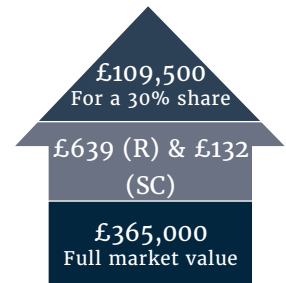
For identification only - Not to scale



Energy Performance



Shared Ownership



Rent & service charges are monthly. Rent charged at 3% on unsold share.



Floor plan produced in accordance with RICS Property Measurement Standards incorporating International Property Measurement Standards (IPMS2 Residential). © nichecom 2024. Produced for Red Loft Limited Liability Partnership. REF: 1165093



Call: 020 7539 3745 Email: thrive@redloft.co.uk

Visit: redloftproperty.co.uk/thrive

Disclaimer: The floor plans are for reference only and are not to scale. Dimensions and layouts are approximate. Prospective buyers should independently verify all details. All properties sold as seen.

Thrive

SELLING

