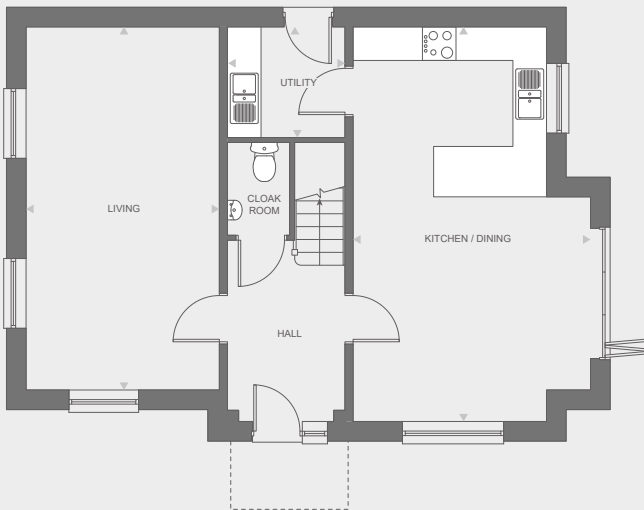
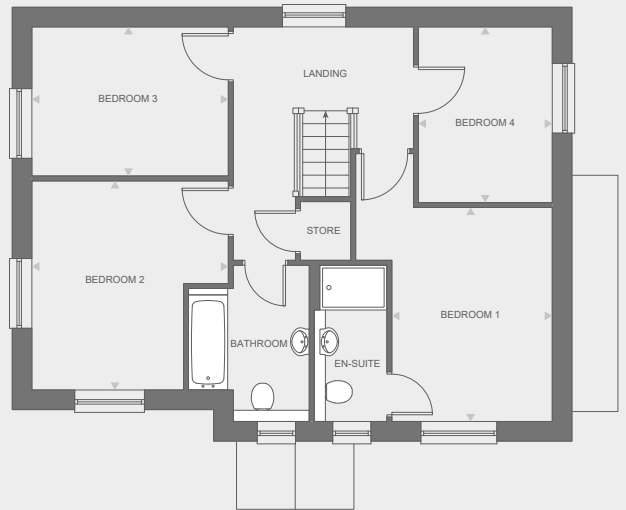


4-bedroom house

Kitchen/dining room	7.1m x 4.29m
Living room	6.54m x 3.5m
Main bedroom	4.83m x 3.55m
Main bedroom en-suite	1.98m x 1.33m
Bedroom 2	3.77m x 3.55m
Bedroom 3	3.55m x 2.7m
Bedroom 4	3.18m x 2.43m
Bathroom	2.18m x 1.98m
Total Area	131 sq m



GROUND FLOOR



FIRST FLOOR



Any floor plans are a general outline of the layout of the property for guidance only. All measurements are approximate and may vary and any intending purchasers should not rely on them as statements of fact or representations of fact but must satisfy themselves by inspection or otherwise as to their accuracy. Dimensions shown are not intended to be relied upon for installation of appliances or items of furniture or otherwise. Cgi's and images are for illustrative purposes only and do not constitute nor constitute part of an offer or contract.