



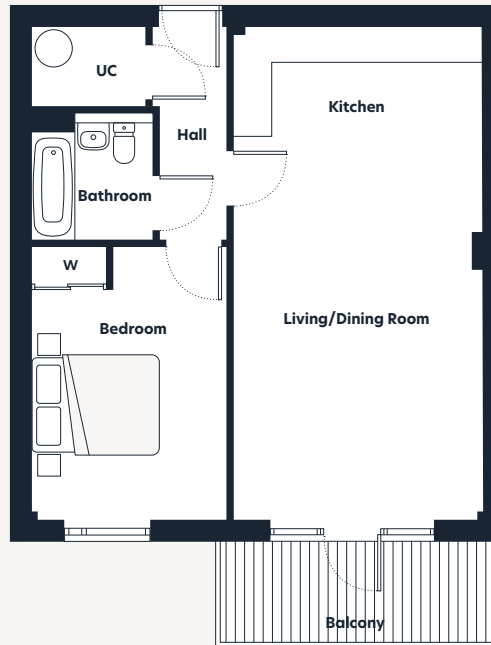
Riverside Square

The Stour Collection: Mallard House

Plot 4

Ground Floor

1 bedroom apartment



Dimensions	m	ft
Kitchen	3.99 x 1.80	13'1" x 5'11"
Living/Dining Room	3.99 x 6.07	13'1" x 19'11"
Bedroom	3.13 x 4.30	10'3" x 14'1"
Bathroom	2.00 x 1.93	6'7" x 6'4"
Gross Internal Area	57m²	618ft²
Balcony	4.30 x 1.60	14'1" x 5'3"

Note: Information about external finishes and window styles can be obtained from your Sales Consultant

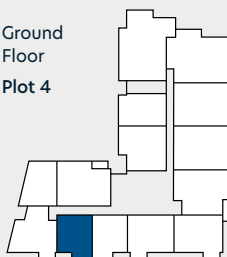
Floorplan key

W Wardrobe
UC Utility cupboard
WM Washing machine

Locator key



Ground Floor
Plot 4



hydenewhomes.co.uk 01732 526444

The floorplans are intended to give a general indication of the proposed floorplan layout. They are not drawn to scale and are not intended to form part of any offer, warranty or representation. Measurements are approximate and are given as a guide and as such must not be relied on as a statement or representation of fact. Total areas shown are maximum and may vary for each unit within a type. Do not use these measurements for carpets, appliance spaces or items of furniture. Kitchen, bathroom and utility layouts and door swings may differ to build and specific plot sizes and layouts may vary within the same unit type. Hyde reserves the right to make changes to these plans prior to exchange of contracts. For further information regarding specific individual plots, please ask your Sales Consultant.