

Chalk Meadows

Narborough

SHARED OWNERSHIP



THE GAYTON

3 Bedroom Semi-Detached House

Plots 21, 22, 39, 40

GROUND FLOOR

Kitchen/Dining Room	5.50m x 3.81m	18'1" x 12'6"
Living Room	4.42m x 3.79m	14'6" x 12'5"

FIRST FLOOR

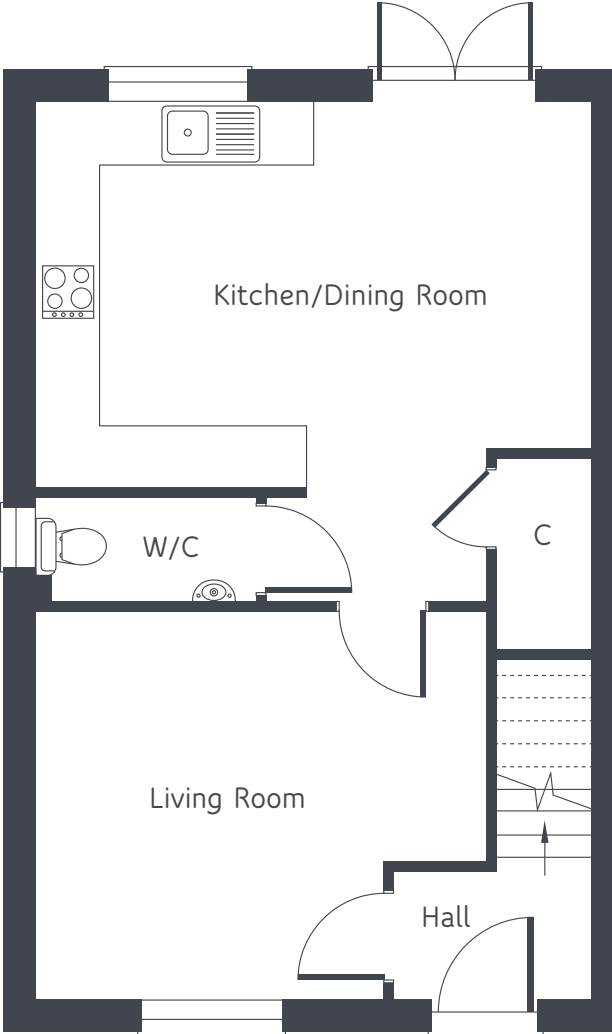
Primary Bedroom	5.50m x 2.68m	18'1" x 8'10"
Bedroom 2	3.67m x 3.25m	12'0" x 10'8"
Bedroom 3	3.67m x 2.16m	12'0" x 7'1"



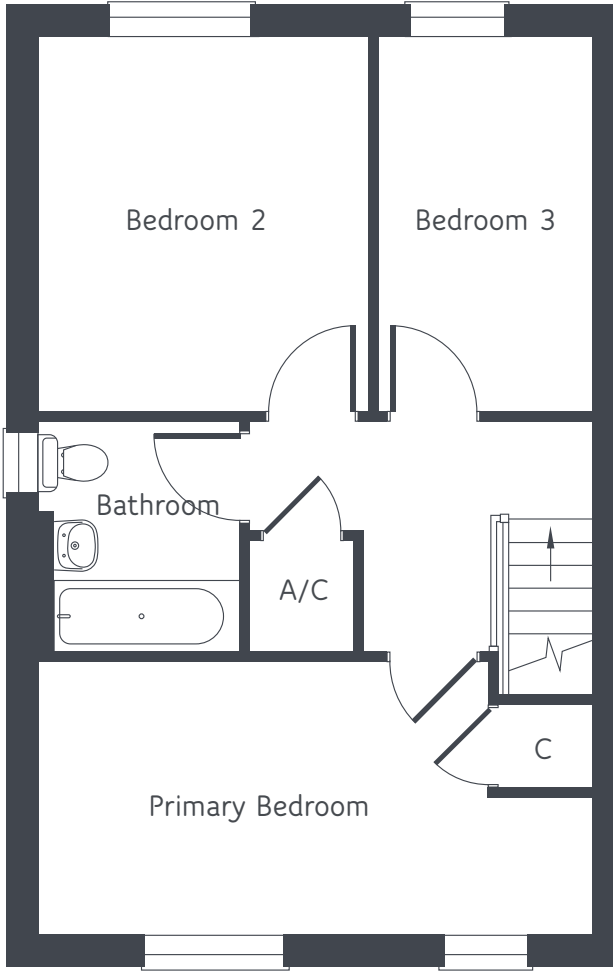
01603 255444
sharedownership@flagship-homes.co.uk
flagship-homes.co.uk

Chalk Meadows

Narborough



GROUND FLOOR



FIRST FLOOR

Total floor space: 893 sq ft / 83 sq m

Floor plans and computer generated images are indicative only and external finished may vary. Dimensions shown may vary within a tolerance of +/- 50mm and are not intended to be used for carpet sizes, appliance sizes or items of furniture. Floor plans are not shown to scale.

