



The Mylne

4 bedroom home

The Quarters @ Redhill

Redhill Way, Telford TF2 9PD | **07787 815891**

lindenhomes.co.uk

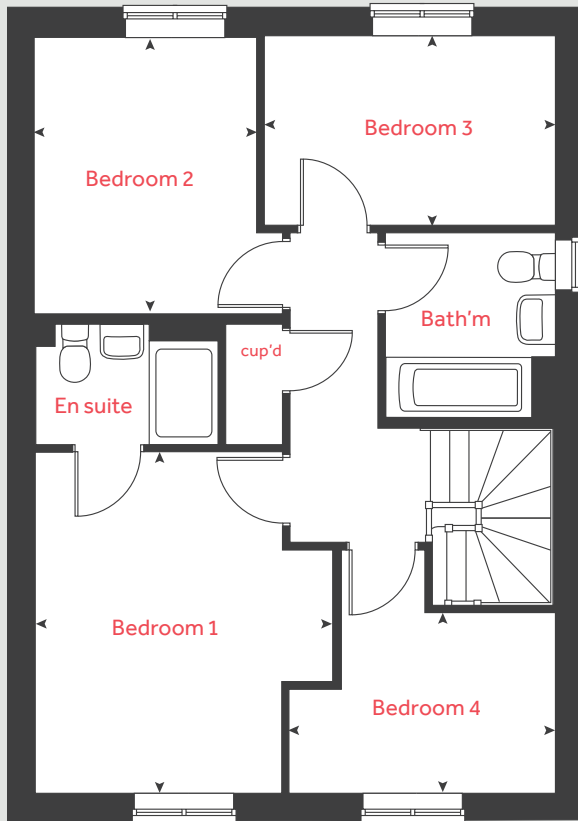
Linden
HOMES

The Mylne

4 bedroom home

Homes 227, 239, 241, 357,
371, 372, 373 & 374

First floor



Ground floor

Kitchen / dining / family area
6.04m x 3.77m 19' 9" x 12' 3"

Living room
4.85m x 3.39m 15' 9" x 11' 1"

First floor

Bedroom 1
3.93m x 3.45m 12' 11" x 11' 3"

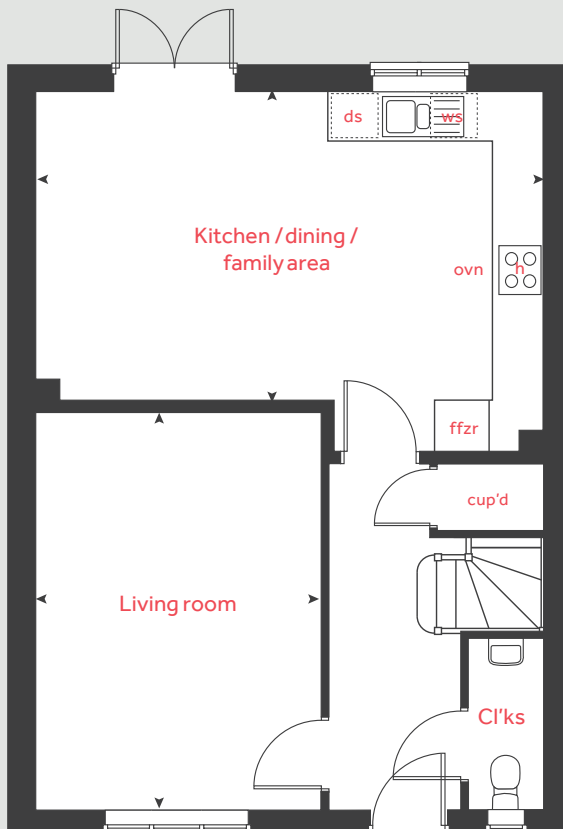
Bedroom 2
3.20m x 2.57m 10' 6" x 8' 5"

Bedroom 3
3.38m x 2.18m 11' 1" x 7' 1"

Bedroom 4
3.10m x 2.08m 10' 2" x 6' 8"

h	hob	ws	washing machine space
ovn	oven	cup'd	cupboard
ffzr	fridge freezer	< >	measuring points
ds	dishwasher space		

Ground floor



Please note, floorplans and dimensions are taken from architectural drawings and are for guidance only. Dimensions stated are within a tolerance of plus or minus 50mm. Overall dimensions are usually stated and there may be projections into these. With our continual improvement policy we constantly review our designs and specification to ensure we deliver the best products to our customers. Computer generated images not to scale. Finishes and materials may vary and landscaping is illustrative only. Kitchen layouts are indicative only and may change. To confirm specific details on our homes please see our sales consultant.

Produced by Vistry Group Design Studio.

When you have finished with this leaflet please recycle it.

NBNRED DS02610 / 07.22

Linden
HOMES