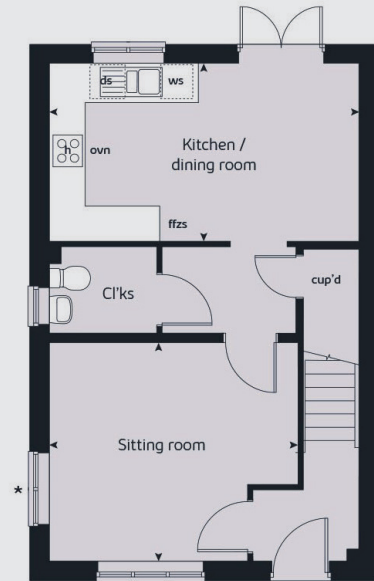


Ground floor

Kitchen/dining area 5.19m x 2.99m

Living room 4.17m x 3.66m

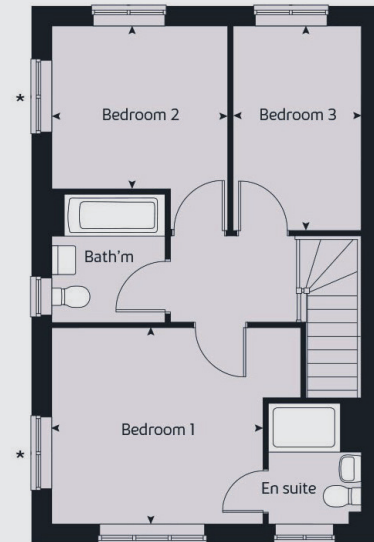


First floor

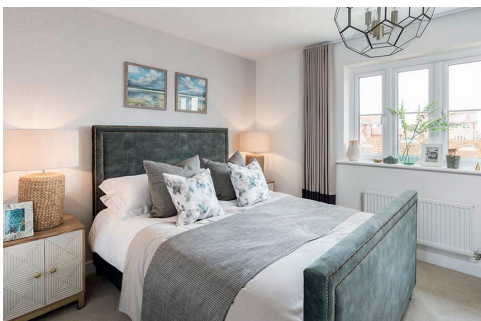
Bedroom 1 3.54m x 2.97m

Bedroom 2 3.04m x 2.95m

Bedroom 3 2.44m x 2.15m



Total floor area 86.59m²



Any floor plans are a general outline of the layout of the property for guidance only. All measurements are approximate and may vary and any intending purchasers should not rely on them as statements of fact or representations of fact but must satisfy themselves by inspection or otherwise as to their accuracy. Dimensions shown are not intended to be relied upon for installation of appliances or items of furniture or otherwise. Cgi's and images are for illustrative purposes only.