

The Ivy Type 4

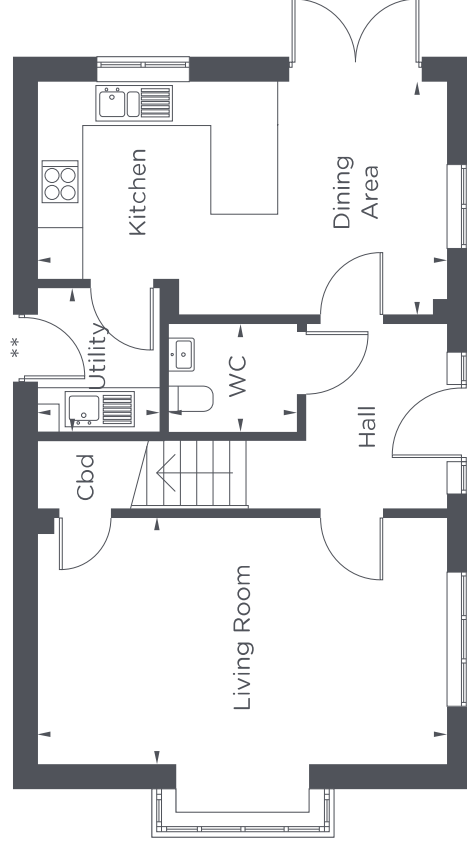
Homes 1583, 1618*, 1623,
1627, 1634*, 1638*, 1645,
1653*, 1662* & 1700*



WHITELEY MEADOWS

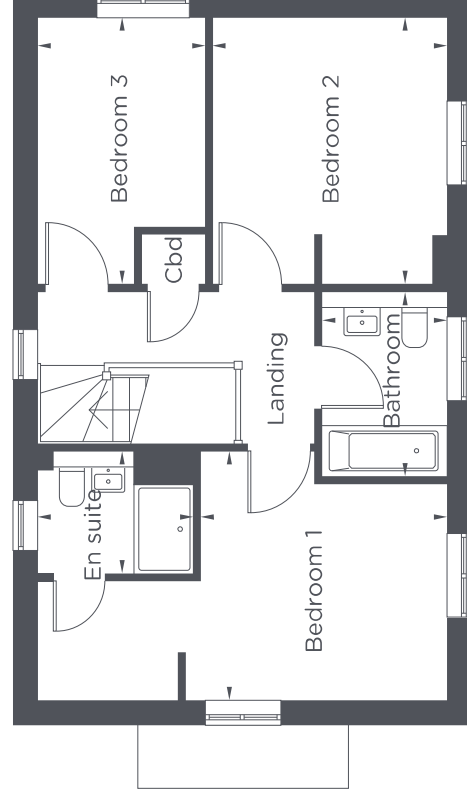
WHITELEY, HAMPSHIRE

3 Bedroom House



G

Kitchen	5530mm x 3140mm	18' 2" x 10' 4"
Living Room	5530mm x 3320mm	18' 2" x 10' 11"
Utility	1650mm x 1960mm	5' 5" x 6' 5"
WC	1780mm x 1460mm	5' 10" x 4' 9"



1

Bedroom 1	3340mm x 3390mm	10' 11" x 11' 1"
Bedroom 2	3190mm x 3610mm	10' 5" x 11' 10"
Bedroom 3	2250mm x 3610mm	7' 5" x 11' 10"
Bathroom	1700mm x 2510mm	5' 7" x 8' 3"
En suite	2100mm x 1640mm	6' 11" x 5' 5"

* Handed (these properties will have the same floorplan layout, but mirrored)

** Utility door and external light not provided on homes 1583 & 1634

www.yourvividhome.co.uk
@WeAreVIVIDsales



Backed by
HM Government

Floorplans are not to scale and are to provide an indication of home layout only. Total areas are provided as gross internal areas and are subject to change. These plans do not act as part of a legally binding contract, warranty or guarantee. The property may also be a handed (mirrored) version of the layout shown here. For full details of the plot you are reserving, please speak to your Sales Officer. Full terms and conditions can be viewed on our website www.yourvividhome.co.uk/terms

