

The Rose Orchard View

3-bedroom home, sleeps 6



3 | 

2 | 

1 | 



Artist's impression

Key features

- Two double bedrooms
- Downstairs W.C.
- En-suite from master bedroom
- Open plan kitchen and dining room
- Separate living room
- Driveway parking



The Rose
Available plots

Shared Ownership:

1, 40, 47, 74

Outright Sale:

39, 52

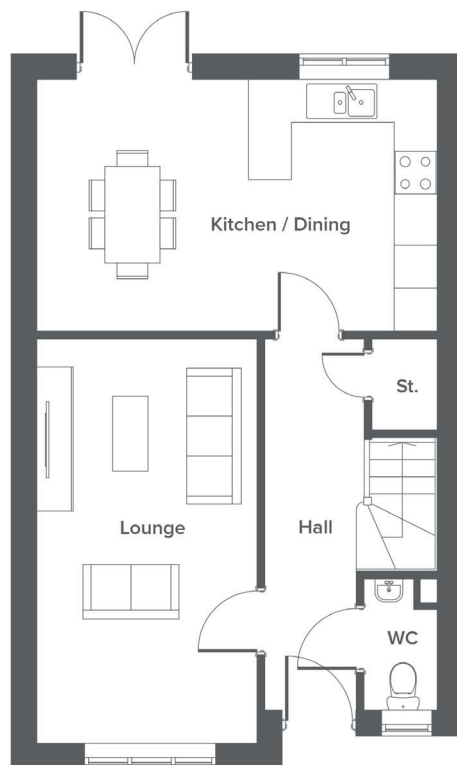
Hargreaves Road, Northwich, CW9 7BL

A selection of 2, 3 & 4-bedroom houses and one bedroom apartments

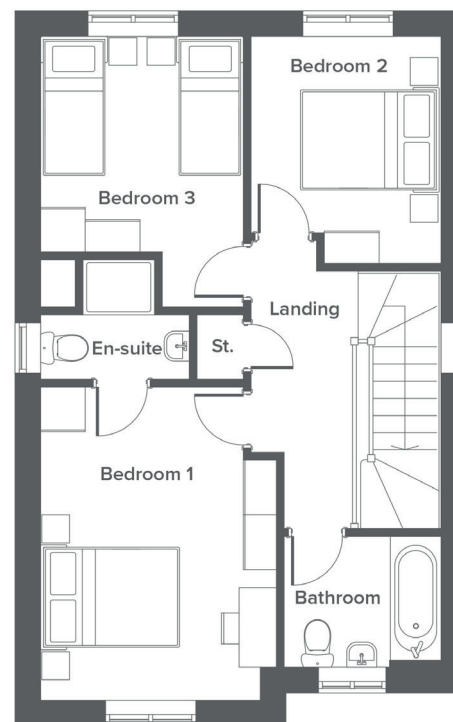
The Rose Orchard View

3-bedroom home, sleeps 6

Ground floor



First floor



Total size **94.3 m² / 1015 ft²**

Ground Floor	Metric	Imperial
Kitchen / Dining	5.5 x 3.4	18'2" x 11'5"
Lounge	3.0 x 5.5	10'0" x 18'3"
WC	1.0 x 1.8	3'5" x 6'0"


First Floor	Metric	Imperial
Bedroom 1	3.2 x 4.3	10'9" x 14'2"
Bedroom 2	2.6 x 3.1	9'8" x 10'4"
Bedroom 3	2.8 x 4.0	9'3" x 13'1"
Bathroom	2.2 x 1.8	7'2" x 6'0"
En-suite	2.0 x 1.6	6'10" x 5'6"

Get in touch

 **01606 218072**

 **yourhousinggroup.co.uk**

 **yhgtv**

 **@yourhousing**

 **yourhousinggroup**