



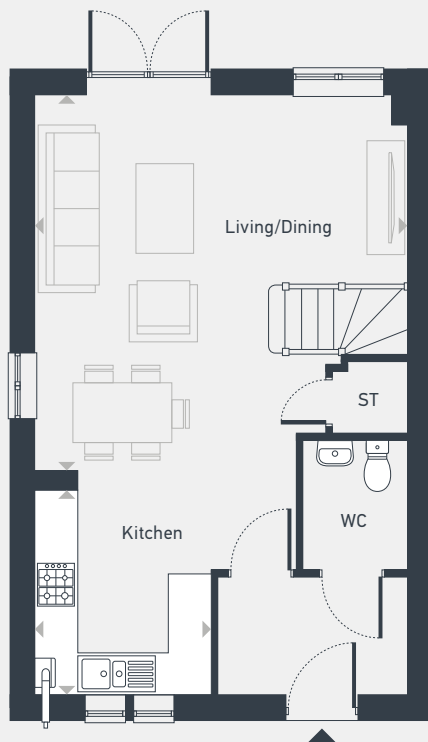
Newcourt Edge

The Rowan 3 bedroom home

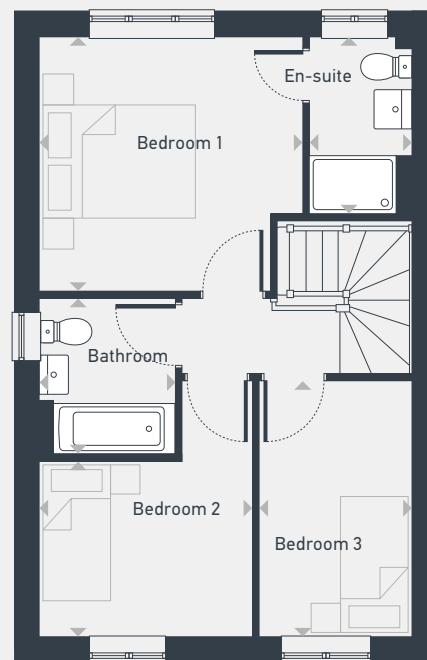
Plots as drawn: 48, 74, 175, 178

Plots handed: 49, 113, 114, 115, 171, 174, 177, 180, 183

86.60 sq m / 932 sq ft



GROUND FLOOR



FIRST FLOOR

DIMENSIONS	m	ft
Living/Dining	5.49m x 5.19m	18'0" x 17'0"
Kitchen	2.85m x 2.46m	9'4" x 8'1"

DIMENSIONS	m	ft
Bedroom 1	3.68m x 3.57m	12'1" x 11'9"
En-suite	2.50m x 1.41m	8'3" x 4'8"
Bedroom 2	2.97m x 2.44m	9'9" x 8'0"
Bedroom 3	3.54m x 2.12m	11'7" x 7'0"
Bathroom	2.15m x 1.90m	7'1" x 6'3"



01392 590 255 | placesforpeople.co.uk/newcourtedge
Newcourt Edge, Ikea Way, Exeter EX2 7RX

Please note: All layouts and floor plans, configurations, maps and information are intended for guidance only and accuracy of this information cannot be relied upon by prospective purchasers who must make their own enquiries to satisfy themselves by inspection or otherwise as to the correct detail. Sizes and dimensions approximate and subject to change.