

17 Marjoram Avenue, Cranleigh

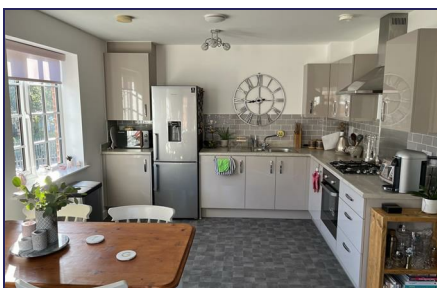


2 bedroom Flat - Purpose Built, yours for £167,750

Welcome to this charming property located at 17 Marjoram Avenue in the picturesque town of Cranleigh. This delightful flat boasts a cosy reception room, perfect for relaxing or entertaining guests. With two bedrooms, there's ample space for a small family, guests, or even a home office. The property features a well-maintained bathroom, ensuring your comfort and convenience.

One of the standout features of this property is the allocated parking space for two vehicles, say goodbye to the hassle of searching for a spot when you return home!

Don't miss out on the chance to make this lovely flat your new home. Contact Harriet today to arrange a viewing and take the first step towards making this property your own.



Pricing

SHARE EXAMPLE
 55% share £167,750
 FULL PRICE
 £305,000
 MONTHLY RENT
 £349.88
 SERVICE CHARGE
 £144.47

About the home

Welcome to the well presented 2-bedroom flat in an excellent location in Cranleigh. Accessed through a secure communal entrance with a telephone entry system, this inviting home welcomes you with a stylish wooden front door that opens into a spacious, carpeted entrance hall featuring two convenient storage cupboards.

The carpeted living/dining area is light and airy with it's two large windows and is fitted with neutral carpet, making it easy to personalise to your own taste. The kitchen has laminate flooring and is fitted with all the essential appliances, a gas hob, an electric oven and a stainless steel sink with a double drainer. In addition to this, you'll also find there is ample space for a fridge/freezer.

The master bedroom is a generous size with space for a quadruple wardrobe, for all your storage needs. The second bedroom is also a lovely size and is flooded with light from the large window.

Outside you'll find 2 allocated parking spaces, coming home after a long day has never been easier!

Other bits to note

Two allocated parking spaces.

Council tax banding: C

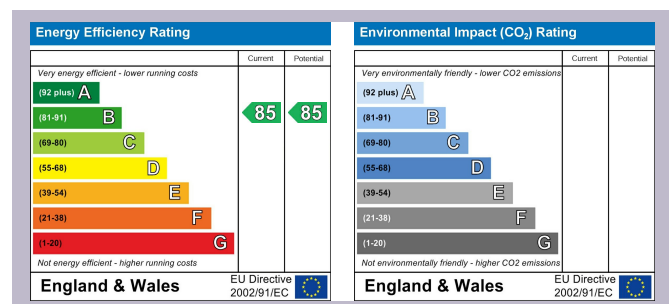
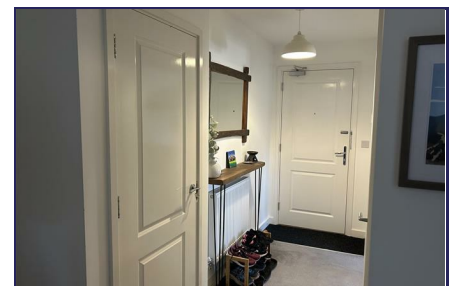
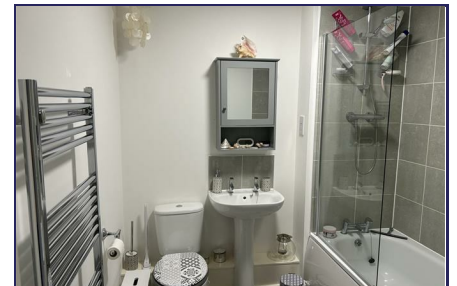
Remaining term on lease - 120

Living/dining room: 3.17 x 3.36m

Kitchen: 3.42 x 3.38m
 Bathroom: 2.14 x 1.94m
 Bedroom one: 3.44 x 4.54m
 Bedroom two: 3.39 x 3.76m

*Please note there is a local connection requirement to Cranleigh

*While we endeavour to make our sales particulars fair, accurate and reliable they are only a general guide to the property. Room dimensions and property details have been supplied to us by the current vendor so are for indication purposes only. Accordingly, if there is any point which is of particular importance to you, please contact the office and we will be pleased to check the position for you, especially if you are contemplating travelling some distance to view the property. Shared ownership homes are bought as leasehold properties, for more information speak to our team. Service charges and rent payable on the unsold equity of this property will be reviewed annually with any changes coming into effect on the 1st April each year. Your home may be at risk of repossession if you don't maintain your mortgage and rental payments



For more details or to book a viewing please contact Harriet Dwipayana:

T: 01749 832 187 M: 07827 954 108 [f/SalesAster](#) [@/SalesAster](#)

E: harriet.dwipayana@aster.co.uk W: Aster.co.uk/sales

ASTER
GROUP