

# 42 Romilly Drive, Watford, WD19 5EW

2 bedroom apartment for  
Shared Ownership from  
£150,000 for a 50% share

**Property overview** A newly refurbished 2-bedroom apartment, inclusive of a kitchen with integrated appliances, a separate living/dining area and one bathroom. This property is only a 5-minute drive from Carpenders Park Overground Station, connecting you to central London in less than 40 minutes, as well as off-street parking.



## Specification

- 990 year lease
- Council Tax Band B
- White internal doors
- Walls in Dulux white matt emulsion
- Minoli Foster Light tiling to kitchen
- Amtico Spacia flooring to kitchen, dining and living room
- Fitted carpets to bedrooms
- Howdens Dove Grey kitchen
- Fridge/freezer, washing machine and oven
- Stainless steel splash back
- Stainless steel bowl sink
- Roca bathroom and WC suite
- Glass shower screen & thermostatic mixer tap
- Heated towel rail
- Service charge inclusive of building insurance

## Features include:



2-bedroom  
apartment



Off-Street  
Parking



Located in  
Three Rivers



Good  
specification

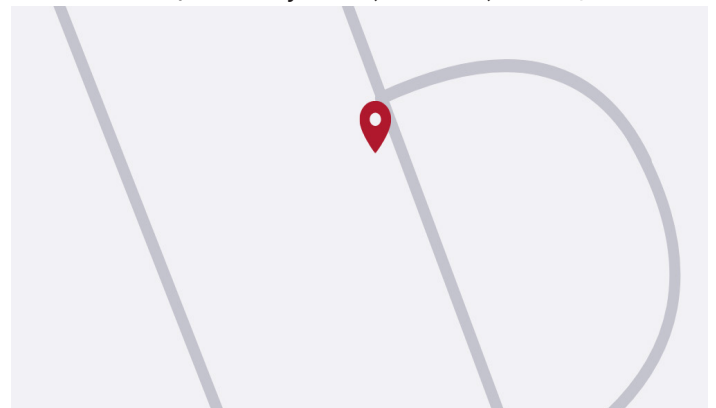


5 minutes' drive from  
Carpenders Park  
Overground



Kitchen with  
integrated appliances

## Location 42 Romilly Drive, Watford, WD19 5EW

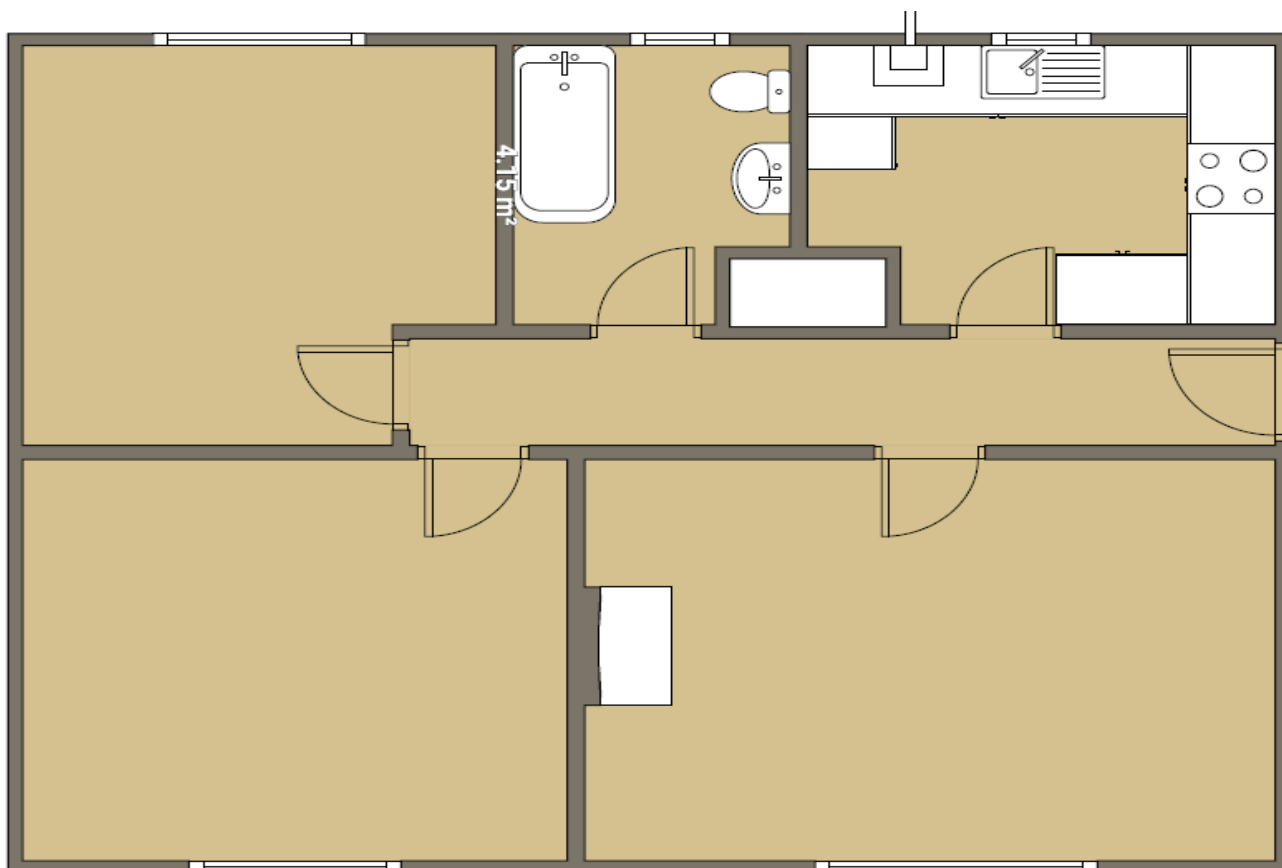


**Call:** 020 7539 3745 **Email:** [thrive@redloft.co.uk](mailto:thrive@redloft.co.uk)  
**Visit:** [redloftproperty.co.uk/thrive/romilly-drive](https://redloftproperty.co.uk/thrive/romilly-drive)

Disclaimer: We have made every effort to accurately describe the property in this brochure. However, prospective buyers should treat these details as a general guide, not as definitive representations or facts. Properties sold as seen

**Thrive**  
SELLING  
**redloft**

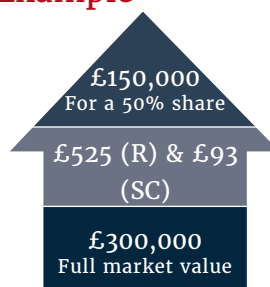
## Floor Plan



2 bedroom flat  
42 Romilly Drive

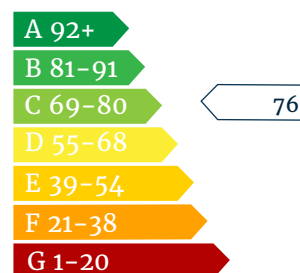
Total Gross Internal 62.00 m<sup>2</sup> / 667 ft<sup>2</sup>

### Shared Ownership Example



Rent & service charges are monthly. Rent charged at 3% on unsold share.

### Energy Performance



Call: 020 7539 3745 Email: [thrive@redloft.co.uk](mailto:thrive@redloft.co.uk)  
Visit: [redloftproperty.co.uk/thrive/romilly-drive](http://redloftproperty.co.uk/thrive/romilly-drive)

Disclaimer: The floor plans are for reference only and are not to scale. Dimensions and layouts are approximate. Prospective buyers should independently verify all details. Properties sold as seen.