

**The
Restorey
NW10**

**MONIZ COURT
LEIBE COURT
FLOORPLANS**



Computer generated image

MONIZ COURT LEIBE COURT FLOORPLANS

A collection of 1, 2 & 3
bedroom apartments
& 3 bedroom duplexes

RE IMAGINE
YOUR STORY

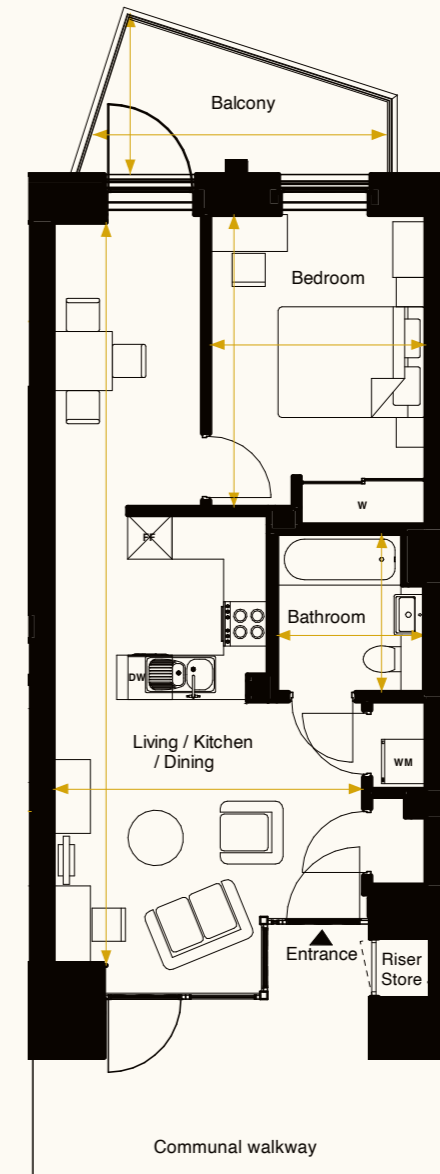


MONIZ COURT FLOORPLANS

Moniz Court

1 Bedroom – Type CO4

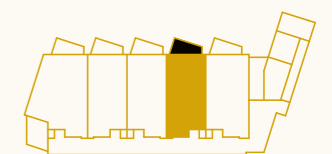
APARTMENTS: 2, 3*, 4, 7, 8*, 9, 12, 13*, 14, 17, 18 & 19



Balcony	3.97 m x 2.09 m
Bathroom	2.04 m x 2.15 m
Bedroom	2.93 m x 3.97 m
Living / Kitchen / Dining	4.20 m x 10.06 m

Gross Internal Area 50m²/ 538.2ft²

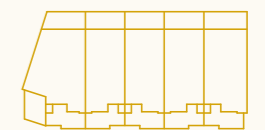
Outdoor spaces have not been included in the GIA.



2nd - 5th Floor



1st Floor



Ground Floor

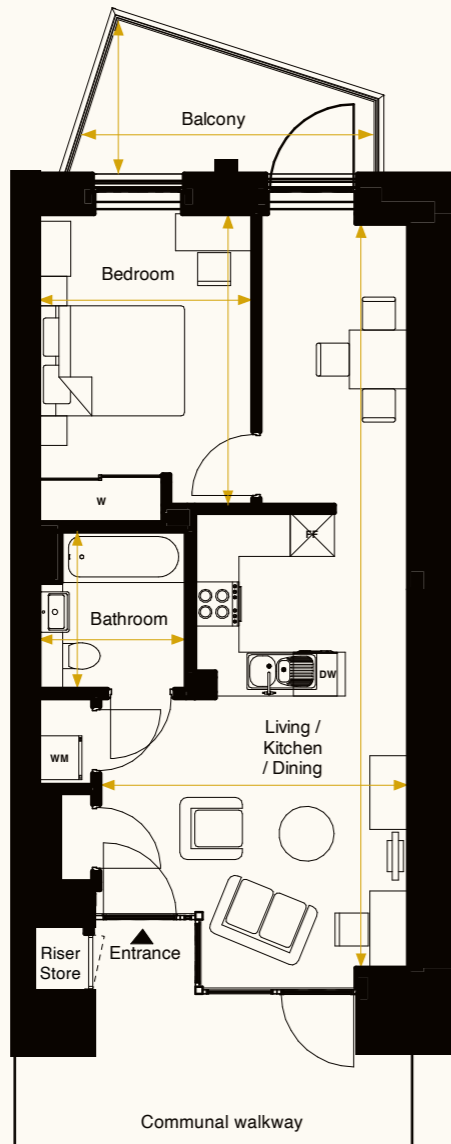
DW Dishwasher **FF** Fridge/Freezer **W** Wardrobe **WM** Wasing/Dryer

Floorplans are not to scale and are indicative only. Location of windows, doors, bathroom fittings, kitchen units and appliances may differ. Dimensions given are approximate and should not be used to order carpets or furniture. External area sizes and locations may differ from those illustrated.

Moniz Court

1 Bedroom – Type CO4(H)

APARTMENTS: 5, 10, 15 & 20

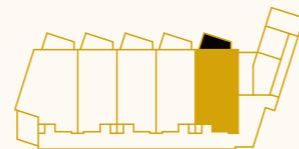


PAGE
04

Balcony	3.97 m x 2.09 m
Bathroom	2.02 m x 2.15 m
Bedroom	2.93 m x 3.97 m
Living / Kitchen / Dining	4.20 m x 10.14 m

Gross Internal Area 50m²/ 538.2ft²

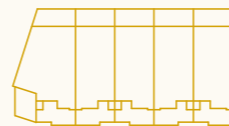
Outdoor spaces have not been included in the GIA.



2nd - 5th Floor



1st Floor



Ground Floor

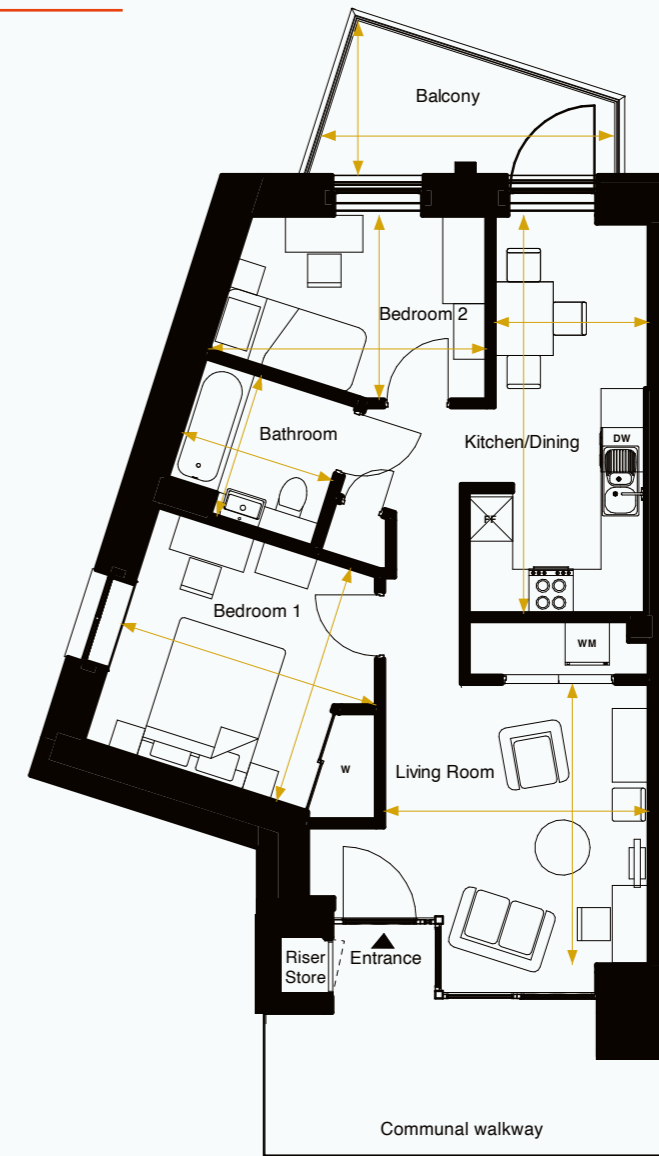
DW Dishwasher FF Fridge/Freezer W Wardrobe WM Wasing/Dryer

Floorplans are not to scale and are indicative only. Location of windows, doors, bathroom fittings, kitchen units and appliances may differ. Dimensions given are approximate and should not be used to order carpets or furniture. External area sizes and locations may differ from those illustrated.

Moniz Court

2 Bedroom – Type CO3

APARTMENTS: 11, 16,21 & 26

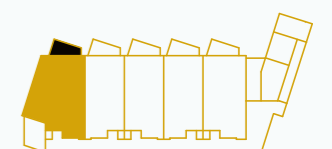


PAGE
05

Balcony	3.97 m x 2.09 m
Bathroom	2.15 m x 2.00 m
Bedroom 1	3.63 m x 3.33 m
Bedroom 2	3.78 m x 2.50 m
Kitchen/Dining	2.10 m x 5.40 m
Living Room	3.60 m x 3.81 m

Gross Internal Area 61.5m²/ 661.98ft²

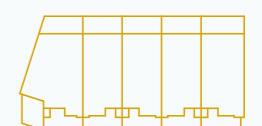
Outdoor spaces have not been included in the GIA.



2nd - 5th Floor



1st Floor



Ground Floor

DW Dishwasher FF Fridge/Freezer W Wardrobe WM Wasing/Dryer

Floorplans are not to scale and are indicative only. Location of windows, doors, bathroom fittings, kitchen units and appliances may differ. Dimensions given are approximate and should not be used to order carpets or furniture. External area sizes and locations may differ from those illustrated.

Moniz Court

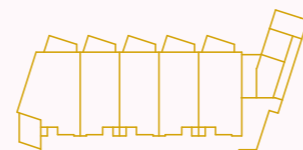
3 Bedroom Duplex – Type CO1

APARTMENT: 21 (WHEELCHAIR ADAPTABLE UNIT)

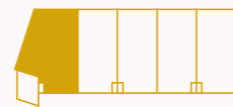


Bathroom	2.52 m x 2.58 m
Bedroom 1	4.30 m x 3.90 m
Bedroom 2	5.86 m x 3.44 m
Bedroom 3	3.19 m x 3.09 m
Kitchen/Dining	6.55 m x 5.72 m
Living Room	6.18 m x 3.44 m
Terrace (Front)	3.61 m x 2.30 m
Terrace (Rear)	4.01 m x 1.59 m
WC	2.25 m x 1.65 m
Gross Internal Area	122m²/ 1313.2ft²

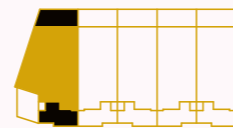
Outdoor spaces have not been included in the GIA.



2nd - 5th Floor



1st Floor



Ground Floor

DW Dishwasher FF Fridge/Freezer W Wardrobe WM Wasing/Dryer

Floorplans are not to scale and are indicative only. Location of windows, doors, bathroom fittings, kitchen units and appliances may differ. Dimensions given are approximate and should not be used to order carpets or furniture. External area sizes and locations may differ from those illustrated.

Moniz Court

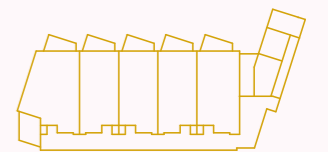
3 Bedroom Duplex – Type CO2

APARTMENTS: 22, 23* & 24

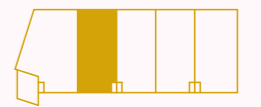


Bathroom	2.15 m x 2.00 m
Bedroom 1	2.75 m x 4.99 m
Bedroom 2	4.73 m x 2.95 m
Bedroom 3	2.19 m x 3.83 m
Kitchen / Dining	2.80 m x 5.08 m
Living Room	5.04 m x 3.39 m
Terrace (Front)	3.61 m x 2.30 m
Terrace (Rear)	4.01 m x 1.59 m
WC	1.80 m x 1.45 m
Gross Internal Area	100.6m² / 1082.85ft²

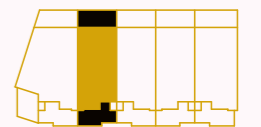
Outdoor spaces have not been included in the GIA.



2nd - 5th Floor



1st Floor



Ground Floor

DW Dishwasher FF Fridge/Freezer W Wardrobe WM Wasing/Dryer

Floorplans are not to scale and are indicative only. Location of windows, doors, bathroom fittings, kitchen units and appliances may differ. Dimensions given are approximate and should not be used to order carpets or furniture. External area sizes and locations may differ from those illustrated.

Moniz Court

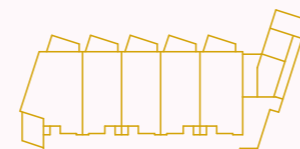
3 Bedroom Duplex – Type C02(H)W

APARTMENT: 25



Bathroom	2.15 m x 2.00 m
Bedroom 1	2.86 m x 5.09 m
Bedroom 2	4.77 m x 2.95 m
Bedroom 3	2.19 m x 3.93 m
Kitchen/Dining	2.80 m x 5.19 m
Living Room	5.15 m x 3.39 m
Terrace (Front)	3.61 m x 2.30 m
Terrace (Rear)	4.01 m x 1.59 m
WC	1.80 m x 1.45 m
Gross Internal Area	102.1m²/ 1098.99ft²

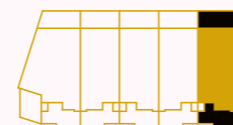
Outdoor spaces have not been included in the GIA.



2nd - 5th Floor



1st Floor



Ground Floor

DW Dishwasher **FF** Fridge/Freezer **W** Wardrobe **WM** Wasing/Dryer

Floorplans are not to scale and are indicative only. Location of windows, doors, bathroom fittings, kitchen units and appliances may differ. Dimensions given are approximate and should not be used to order carpets or furniture. External area sizes and locations may differ from those illustrated.



Computer generated image

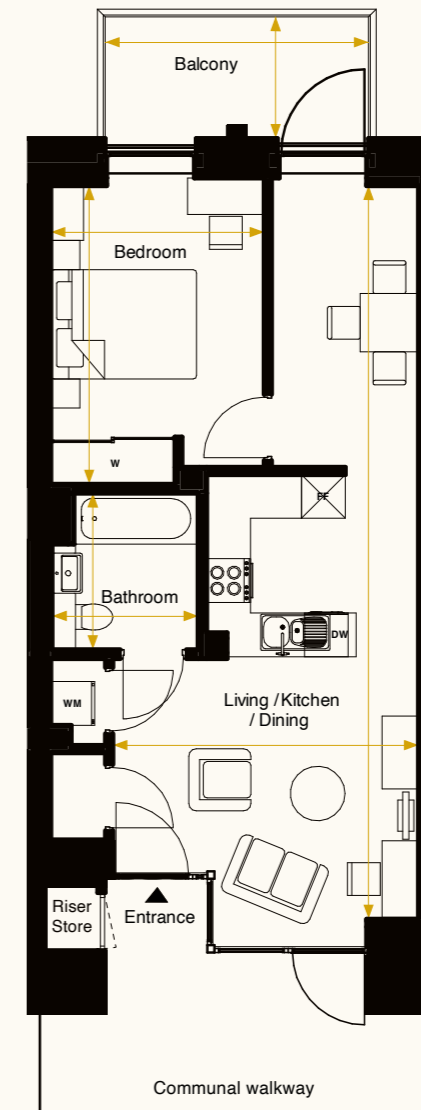


LEIBE COURT
FLOORPLANS

Leibe Court

1 Bedroom – Type EO2

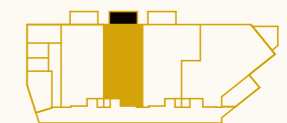
APARTMENTS: 4, 8, 12, 16, 20, 24 & 28



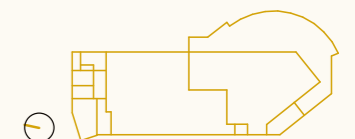
Balcony	3.61 m x 1.67 m
Bathroom	2.00 m x 2.15 m
Bedroom	2.93 m x 4.10 m
Living / Kitchen / Dining	4.19 m x 10.06 m

Gross Internal Area **50m2 / 538.1ft2**

Outdoor spaces have not been included in the GIA.



1st - 7th Floor



Ground Floor

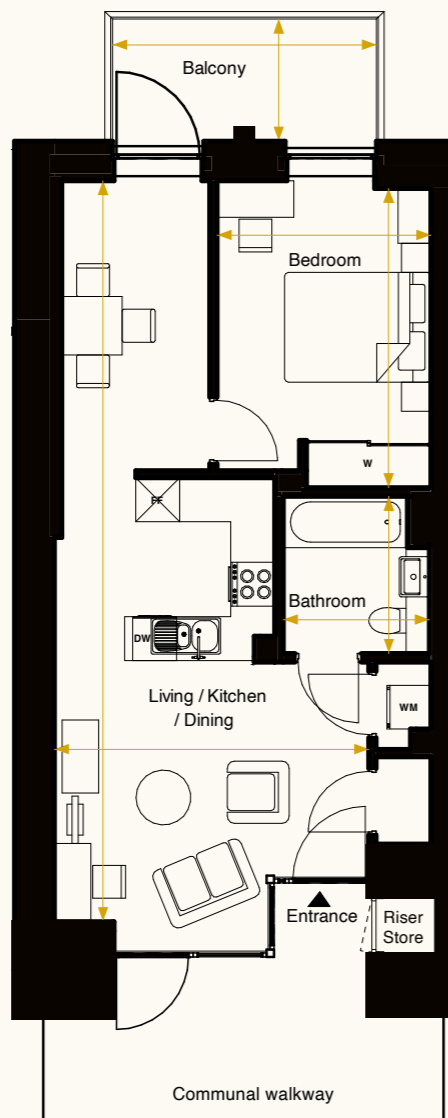
DW Dishwasher **FF** Fridge/Freezer **W** Wardrobe **WM** Wasing/Dryer

Floorplans are not to scale and are indicative only. Location of windows, doors, bathroom fittings, kitchen units and appliances may differ. Dimensions given are approximate and should not be used to order carpets or furniture. External area sizes and locations may differ from those illustrated.

Leibe Court

1 Bedroom – Type EO2(H)

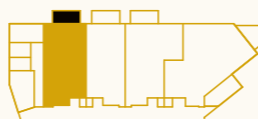
APARTMENTS: 5, 9, 13, 17, 21, 25 & 29



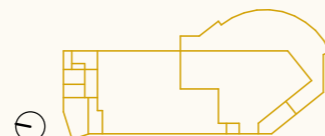
Balcony	3.61 m x 1.67 m
Bathroom	2.00 m x 2.15 m
Bedroom	2.93 m x 4.10 m
Living/Kitchen/Dining	4.30 m x 10.14 m

Gross Internal Area 50.8m² / 546.8ft²

Outdoor spaces have not been included in the GIA.



1st - 7th Floor



Ground Floor

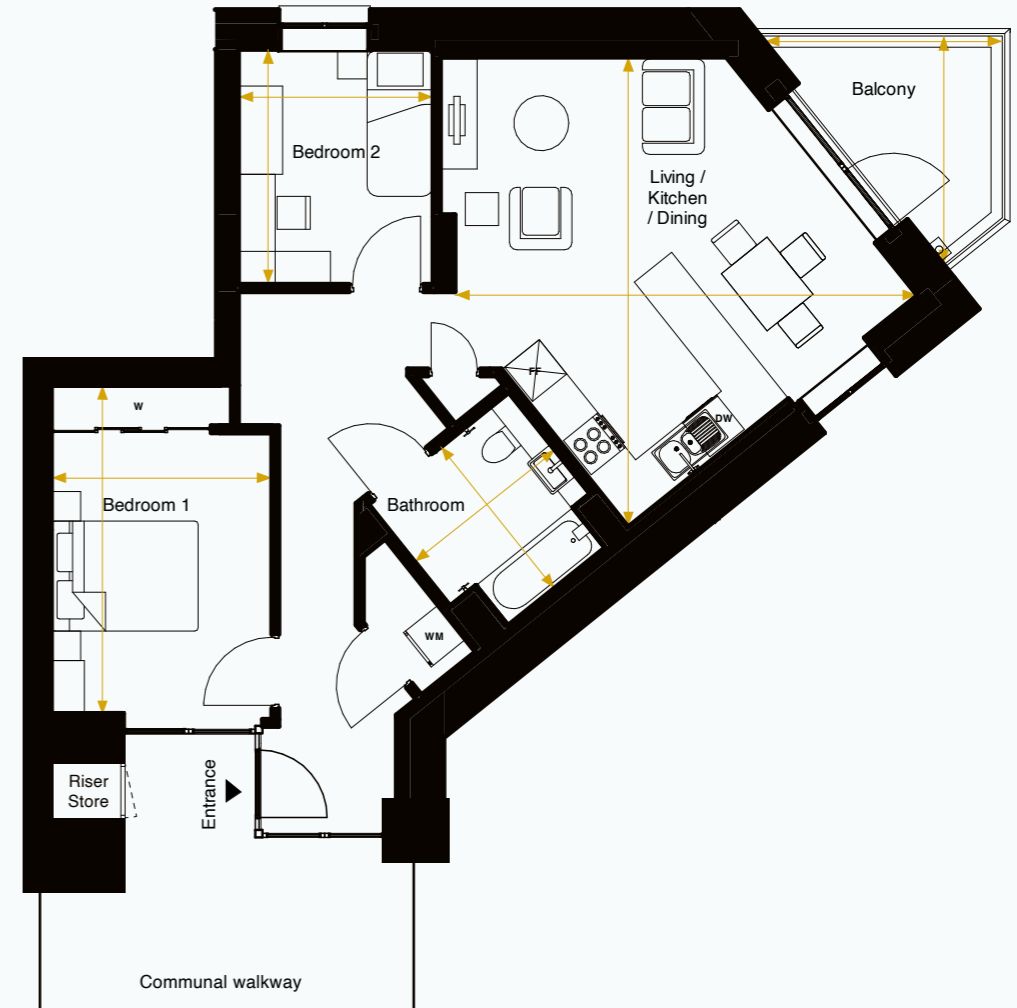
DW Dishwasher FF Fridge/Freezer W Wardrobe WM Wasing/Dryer

Floorplans are not to scale and are indicative only. Location of windows, doors, bathroom fittings, kitchen units and appliances may differ. Dimensions given are approximate and should not be used to order carpets or furniture. External area sizes and locations may differ from those illustrated.

Leibe Court

2 Bedroom – Type EO4

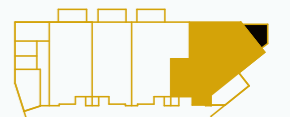
APARTMENTS: 2, 6, 10, 14, 18, 22 & 26 (WHEELCHAIR ADAPTABLE UNIT)



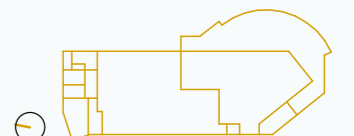
Balcony	3.23 m x 3.11 m
Bathroom	2.45 m x 2.47 m
Bedroom 1	3.00 m x 4.50 m
Bedroom 2	2.65 m x 3.20 m
Living/Kitchen/Dining	6.30 m x 6.40 m

Gross Internal Area 72.16m² / 776.7ft²

Outdoor spaces have not been included in the GIA.



1st - 7th Floor



Ground Floor

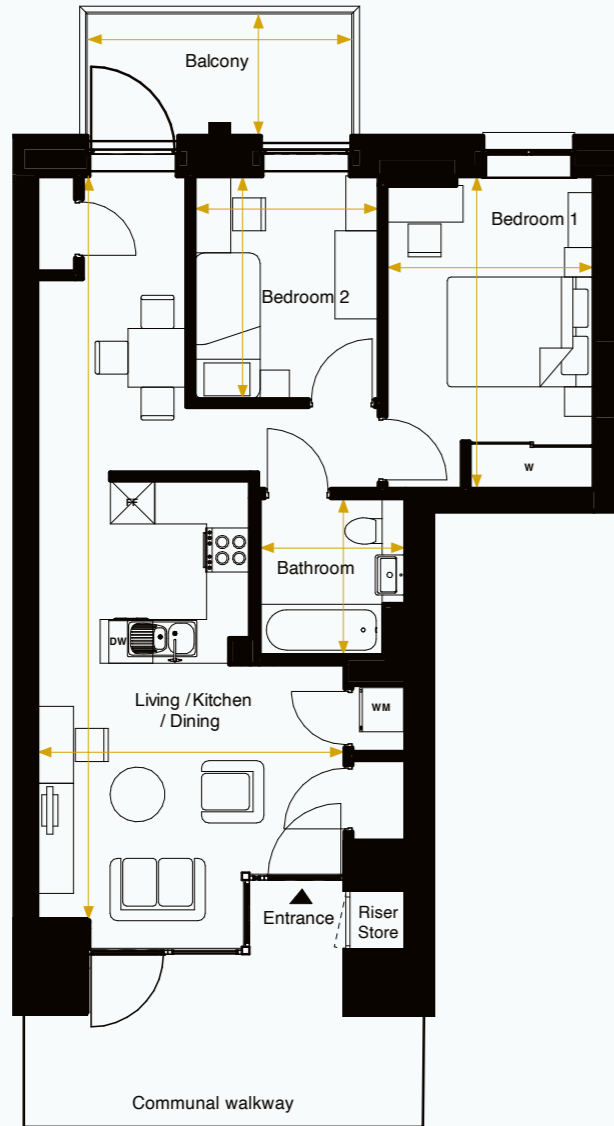
DW Dishwasher FF Fridge/Freezer W Wardrobe WM Wasing/Dryer

Floorplans are not to scale and are indicative only. Location of windows, doors, bathroom fittings, kitchen units and appliances may differ. Dimensions given are approximate and should not be used to order carpets or furniture. External area sizes and locations may differ from those illustrated.

Leibe Court

2 Bedroom – Type E03

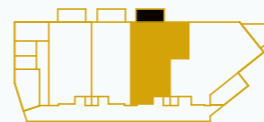
APARTMENTS: 3, 7, 11, 15, 19, 23 & 27



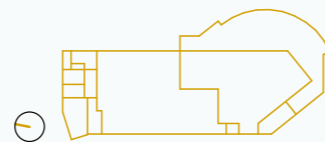
Balcony	3.61 m x 1.67 m
Bathroom	2.00 m x 2.15 m
Bedroom 1	2.84 m x 4.28 m
Bedroom 2	2.52 m x 3.05 m
Living/Kitchen/Dining	4.20 m x 10.16 m

Gross Internal Area 61m² / 656.6ft²

Outdoor spaces have not been included in the GIA.



1st - 7th Floor



Ground Floor

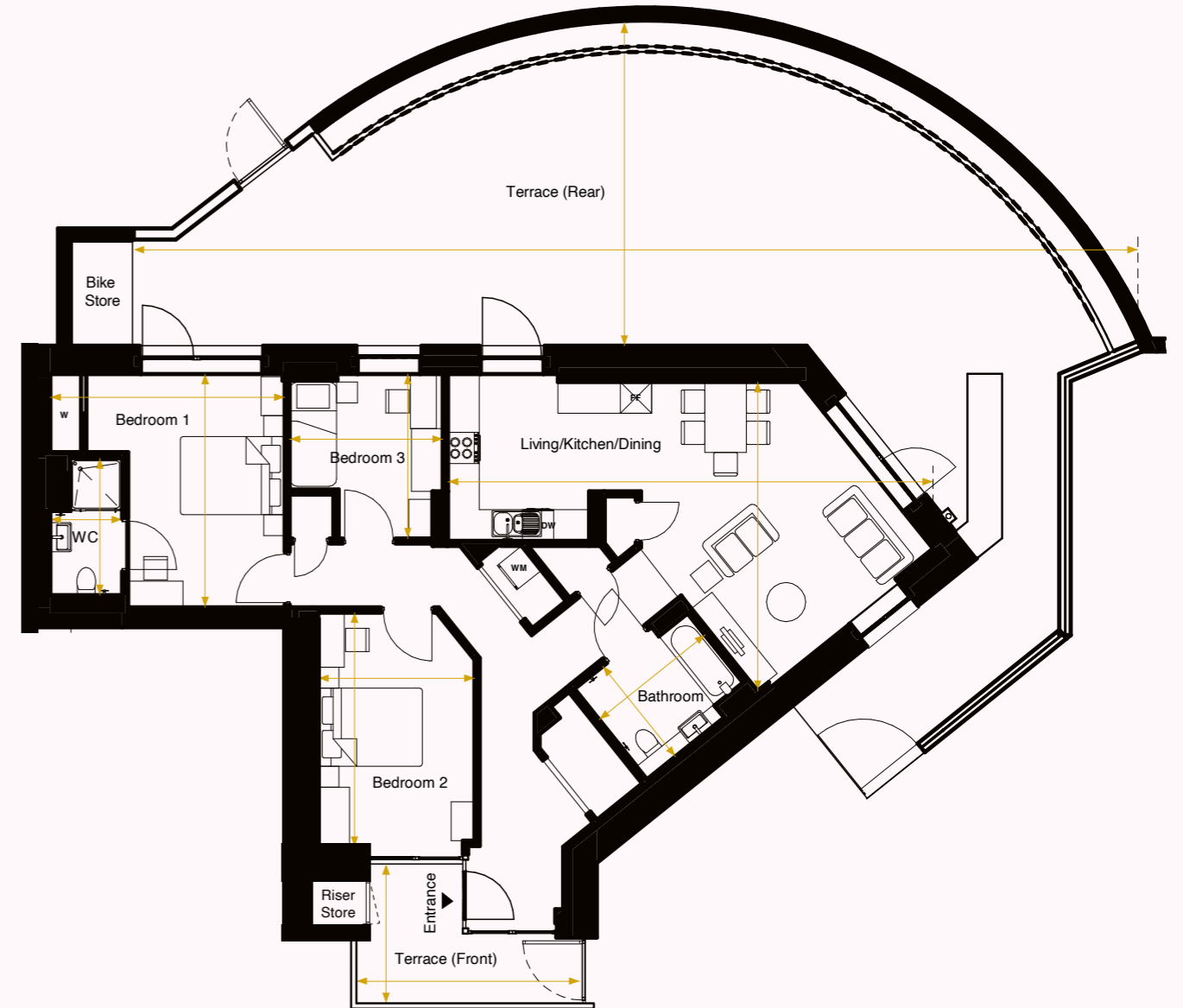
DW Dishwasher FF Fridge/Freezer W Wardrobe WM Wasing/Dryer

Floorplans are not to scale and are indicative only. Location of windows, doors, bathroom fittings, kitchen units and appliances may differ. Dimensions given are approximate and should not be used to order carpets or furniture. External area sizes and locations may differ from those illustrated.

Leibe Court

3 Bedroom – Type E01

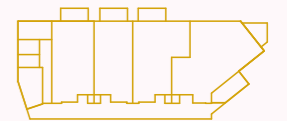
APARTMENT: 1 (WHEELCHAIR ADAPTABLE UNIT)



Bathroom	2.60 m x 2.22 m
Bedroom 1	4.49 m x 4.48 m
Bedroom 2	3.00 m x 4.50 m
Bedroom 3	2.94 m x 3.15 m
Living/Kitchen/Dining	9.31 m x 5.92 m
Terrace (Front)	4.28 m x 2.66 m
Terrace (Rear)	19.26 m x 6.20 m
WC	1.37 m x 2.62 m

Gross Internal Area 107.15m² / 1153.4ft²

Outdoor spaces have not been included in the GIA.



1st - 7th Floor



Ground Floor

DW Dishwasher FF Fridge/Freezer W Wardrobe WM Wasing/Dryer

Floorplans are not to scale and are indicative only. Location of windows, doors, bathroom fittings, kitchen units and appliances may differ. Dimensions given are approximate and should not be used to order carpets or furniture. External area sizes and locations may differ from those illustrated.



About SNG

Our purpose is to provide good, affordable homes: the foundation for a better life, and our vision is thriving communities, over generations.

We're one of England's leading providers of quality homes. We love to build, and we take great pride in the homes we deliver and manage. We build homes for London Living Rent and Shared Ownership across London and the home counties.

We operate commercially but our profits are reinvested back into building more affordable homes and providing a first-class service to our customers. We provide homes with an impressive specification which, coupled with sustainable design features, means our homes are ideal for modern living.



Sovereign Network Homes is a charitable organisation and a subsidiary of Sovereign Network Group. All computer generated images (CGIs) used in these particulars are for illustrative purposes only, are not intended to provide an actual forecast or impression of the measurements, dimensions, layouts, placements, context and/or finishes of the buildings premises or landscaping within the development, and should not be relied upon as true or accurate. These brief particulars have been prepared and are intended as a guide to supplement an inspection or survey and do not form part of any offer or contract. Their accuracy is not guaranteed. They contain statement of opinion and in some instances we have relied upon information supplied by others. This brochure includes imagery for illustrative purposes only. The map is not to scale. Design elements and specification details may change without notice. You should verify the particulars on your visit to the site and with the sales agent. The particulars do not obviate the need for a survey and all the appropriate enquiries. Accordingly, there shall be no liability as a result of any effort or omission in the particulars or information given. All information believed to be correct at time of print. Travel times are approximate only and are subject to change.

CONTACT
DETAILS