

**The  
Restorey**  
NW10

**AMOUR COURT  
NAYMAR COURT**  
FLOORPLANS



## AMOUR COURT NAYMAR COURT

### FLOORPLANS

A collection of 1, 2 & 3  
bedroom apartments

RE IMAGINE  
YOUR STORY

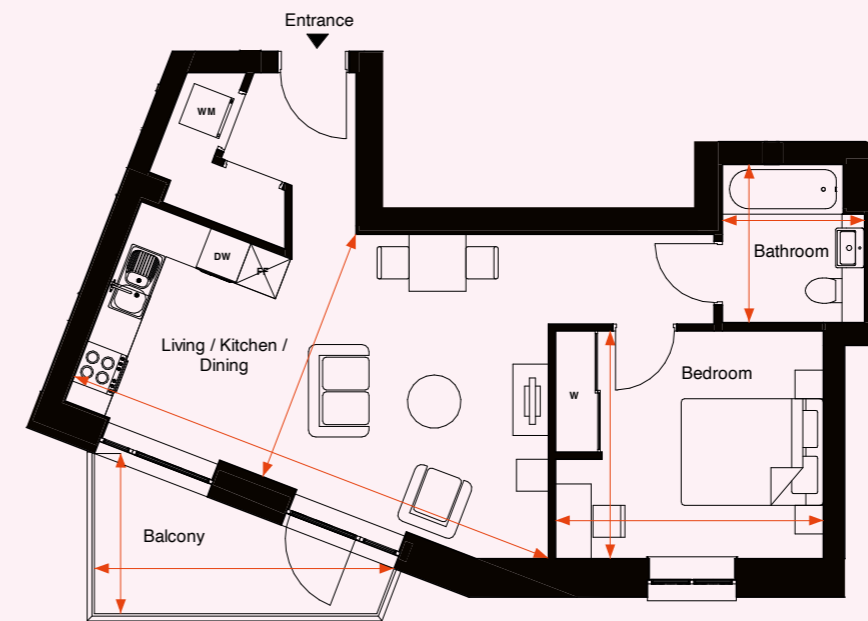
# AMOUR COURT FLOORPLANS

Computer generated image

# Amour Court

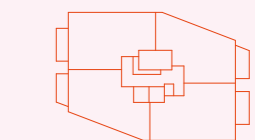
1 Bedroom – Type A03

APARTMENTS: 2, 5, 8, 11, 14, 17, 20, 23, 26, 29, 32, 35, 38, 41, 44, 47, 49 & 52

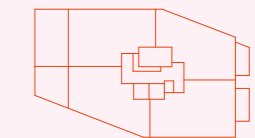


Balcony	4.21 m x 2.25 m
Bathroom	2.00 m x 2.22 m
Bedroom	3.76 m x 3.20 m
Living / Kitchen / Dining	7.13 m x 3.65 m

**Gross Internal Area** 50.9m<sup>2</sup> / 547.88ft<sup>2</sup>  
Outdoor spaces have not been included in the GIA.



11th - 14th Floor



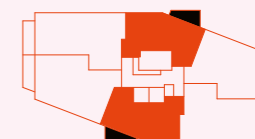
10th Floor



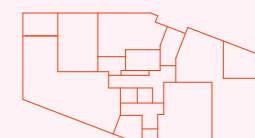
9th Floor



8th Floor



1st - 7th Floor



Ground Floor

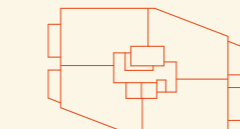
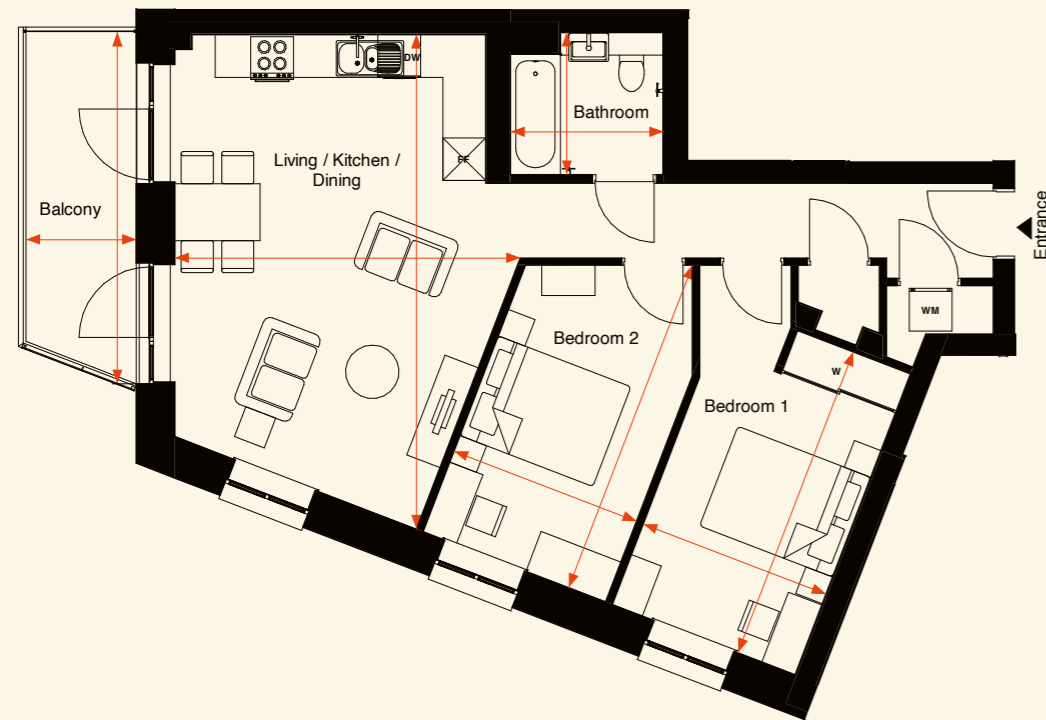
**DW** Dishwasher **FF** Fridge/Freezer **W** Wardrobe **WM** Wasing/Dryer

Floorplans are not to scale and are indicative only. Location of windows, doors, bathroom fittings, kitchen units and appliances may differ. Dimensions given are approximate and should not be used to order carpets or furniture. External area sizes and locations may differ from those illustrated.

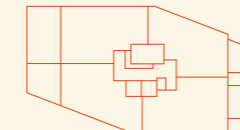
# Amour Court

2 Bedroom – Type A04

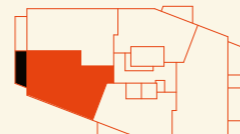
APARTMENTS: 3, 6, 9, 12, 15, 18, 21, 24, 27, 30, 33, 36, 39, 42, 45 & 50



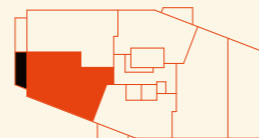
11th - 14th Floor



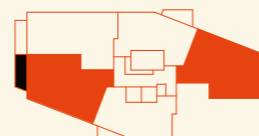
10th Floor



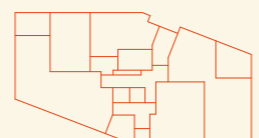
9th Floor



8th Floor



1st - 7th Floor



Ground Floor

Balcony	1.55 m x 4.94 m
Bathroom	2.15 m x 2.00 m
Bedroom 1	2.75 m x 4.53 m
Bedroom 2	2.75 m x 4.86 m
Living / Kitchen / Dining	4.86 m x 6.95 m

**Gross Internal Area** 70.3m<sup>2</sup> / 756.7ft<sup>2</sup>

Outdoor spaces have not been included in the GIA.

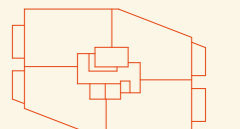
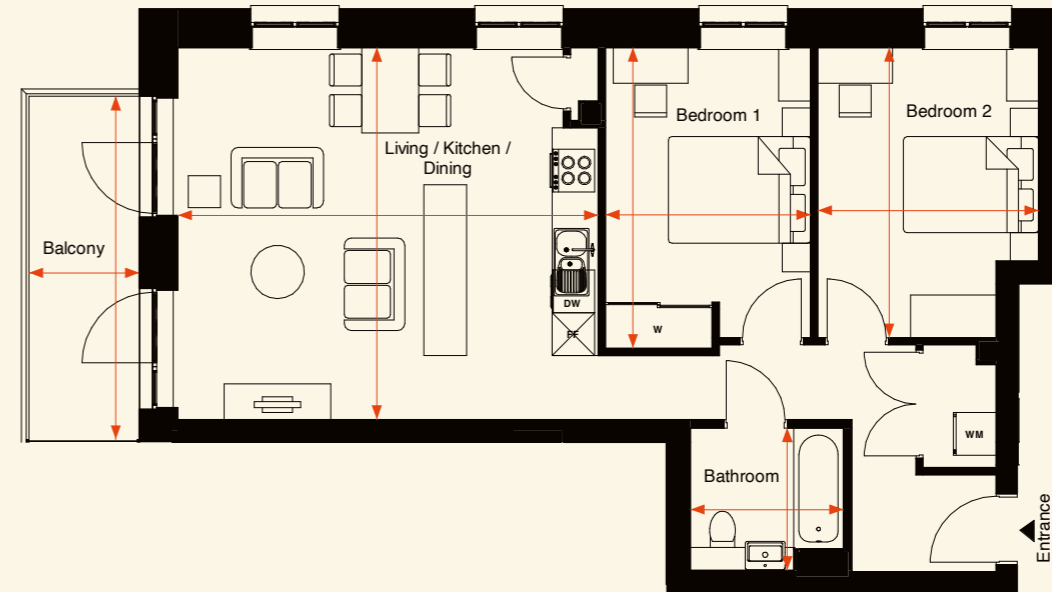
DW Dishwasher FF Fridge/Freezer W Wardrobe WM Wasing/Dryer

Floorplans are not to scale and are indicative only. Location of windows, doors, bathroom fittings, kitchen units and appliances may differ. Dimensions given are approximate and should not be used to order carpets or furniture. External area sizes and locations may differ from those illustrated.

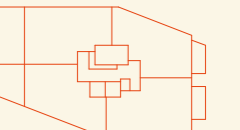
# Amour Court

2 Bedroom – Type A05

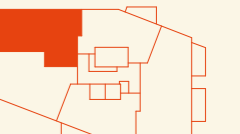
APARTMENTS: 4, 7, 10, 13, 16, 19, 22, 25, 28, 31, 34, 37, 40, 43, 46 & 51



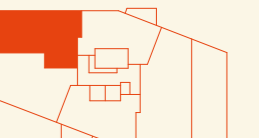
11th - 14th Floor



10th Floor



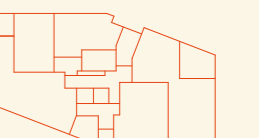
9th Floor



8th Floor



1st - 7th Floor



Ground Floor

Balcony	1.55 m x 4.82 m
Bathroom	2.15 m x 2.00 m
Bedroom 1	2.89 m x 4.23 m
Bedroom 2	3.10 m x 4.08 m
Living / Kitchen / Dining	5.91 m x 5.23 m

**Gross Internal Area** 71m<sup>2</sup> / 764.2ft<sup>2</sup>

Outdoor spaces have not been included in the GIA.

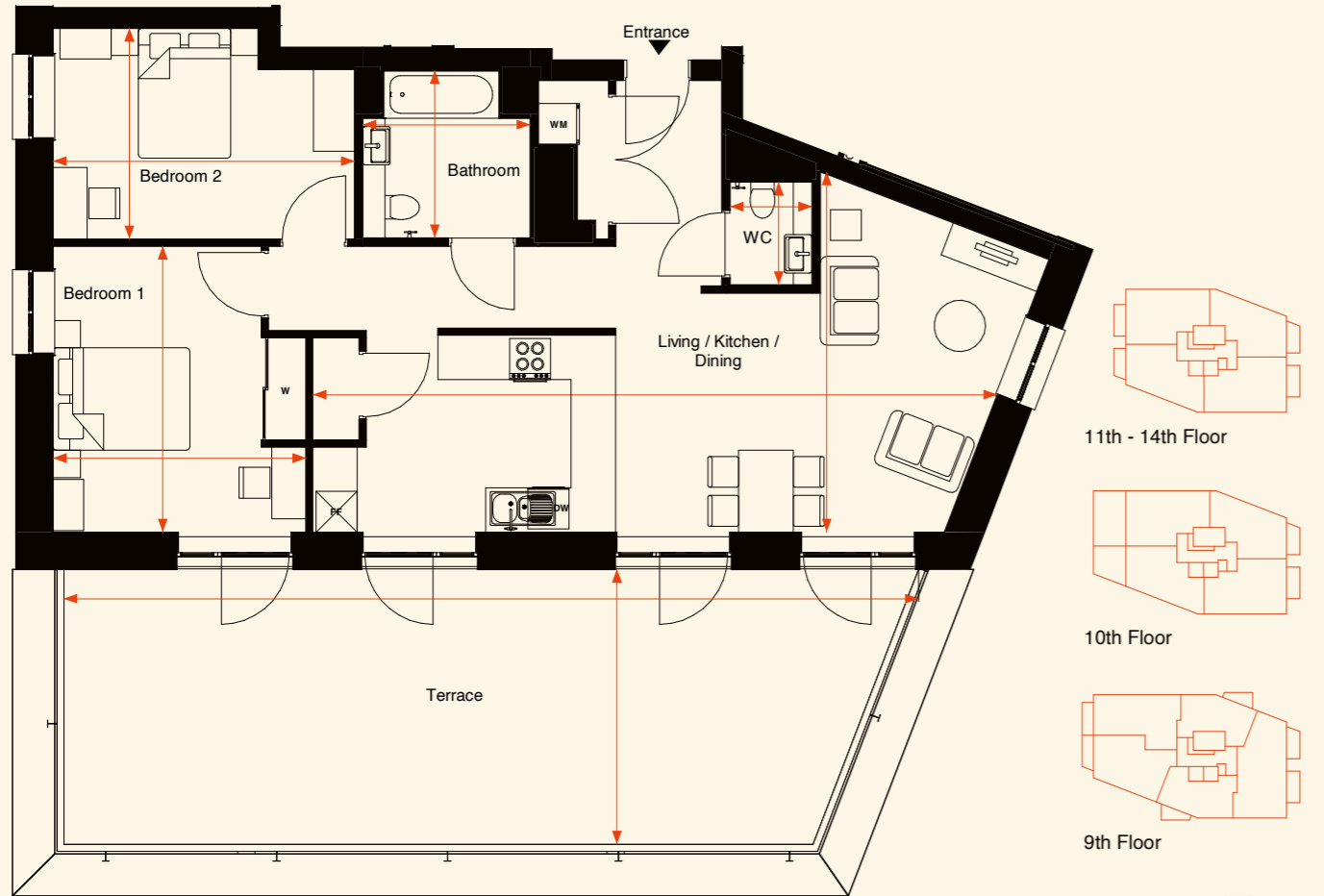
DW Dishwasher FF Fridge/Freezer W Wardrobe WM Wasing/Dryer

Floorplans are not to scale and are indicative only. Location of windows, doors, bathroom fittings, kitchen units and appliances may differ. Dimensions given are approximate and should not be used to order carpets or furniture. External area sizes and locations may differ from those illustrated.

# Amour Court

2 Bedroom – Type A06

APARTMENT: 48 (WHEELCHAIR ADAPTABLE UNIT)



Bathroom	2.45 m x 2.45 m
Bedroom 1	4.19 m x 3.70 m
Bedroom 2	3.09 m x 4.41 m
Living / Kitchen / Dining	5.27 m x 10.01 m
Terrace	4.02 m x 12.51 m
WC	1.51 m x 1.20 m

**Gross Internal Area** 88.1m<sup>2</sup> / 948.3ft<sup>2</sup>  
Outdoor spaces have not been included in the GIA.

⊙ Ground Floor

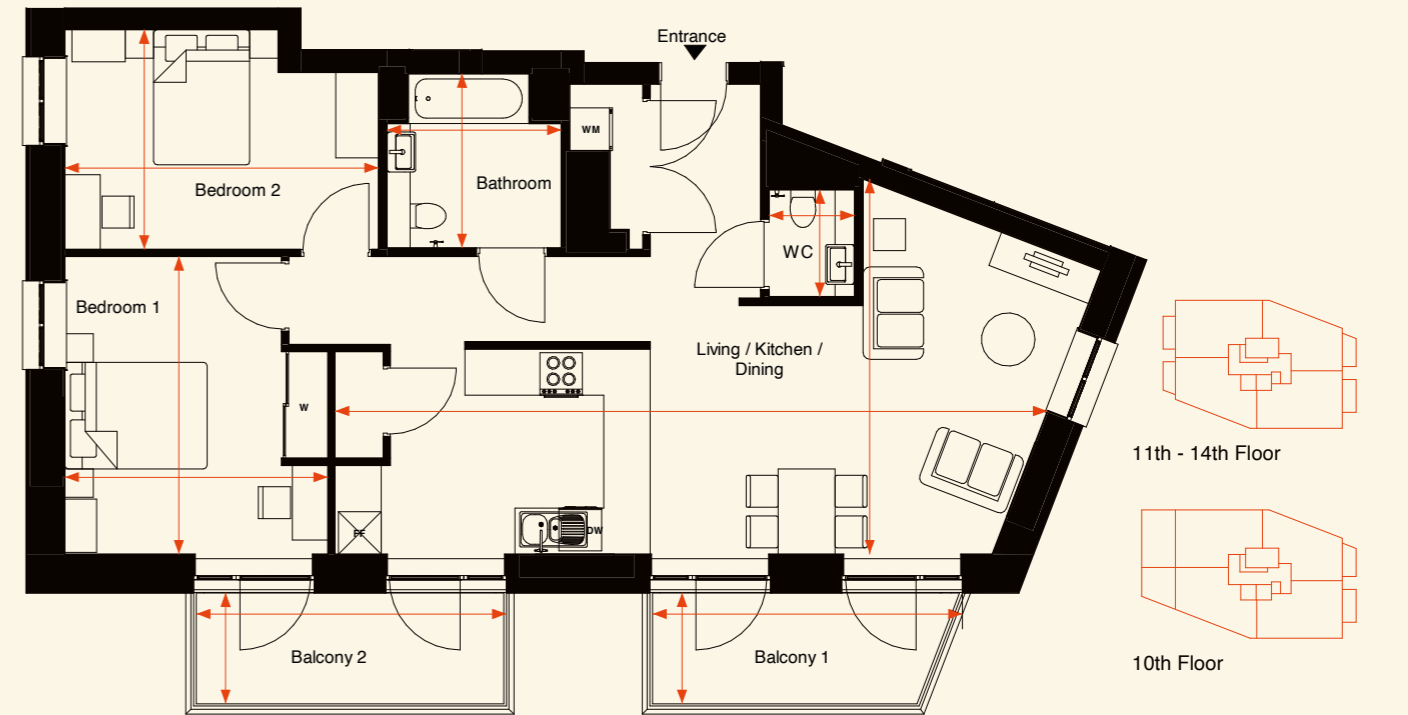
DW Dishwasher FF Fridge/Freezer W Wardrobe WM Wasing/Dryer

Floorplans are not to scale and are indicative only. Location of windows, doors, bathroom fittings, kitchen units and appliances may differ. Dimensions given are approximate and should not be used to order carpets or furniture. External area sizes and locations may differ from those illustrated.

# Amour Court

2 Bedroom – Type A06A

APARTMENT: 53 (WHEELCHAIR ADAPTABLE UNIT)



Balcony 1	1.56 m x 4.36 m
Balcony 2	1.56 m x 4.36 m
Bathroom	2.45 m x 2.45 m
Bedroom 1	4.19 m x 3.70 m
Bedroom 2	3.09 m x 4.41 m
Living / Kitchen / Dining	5.27 m x 10.01 m
WC	1.51 m x 1.20 m

**Gross Internal Area** 88.1m<sup>2</sup> / 948.3ft<sup>2</sup>  
Outdoor spaces have not been included in the GIA.

⊙ Ground Floor

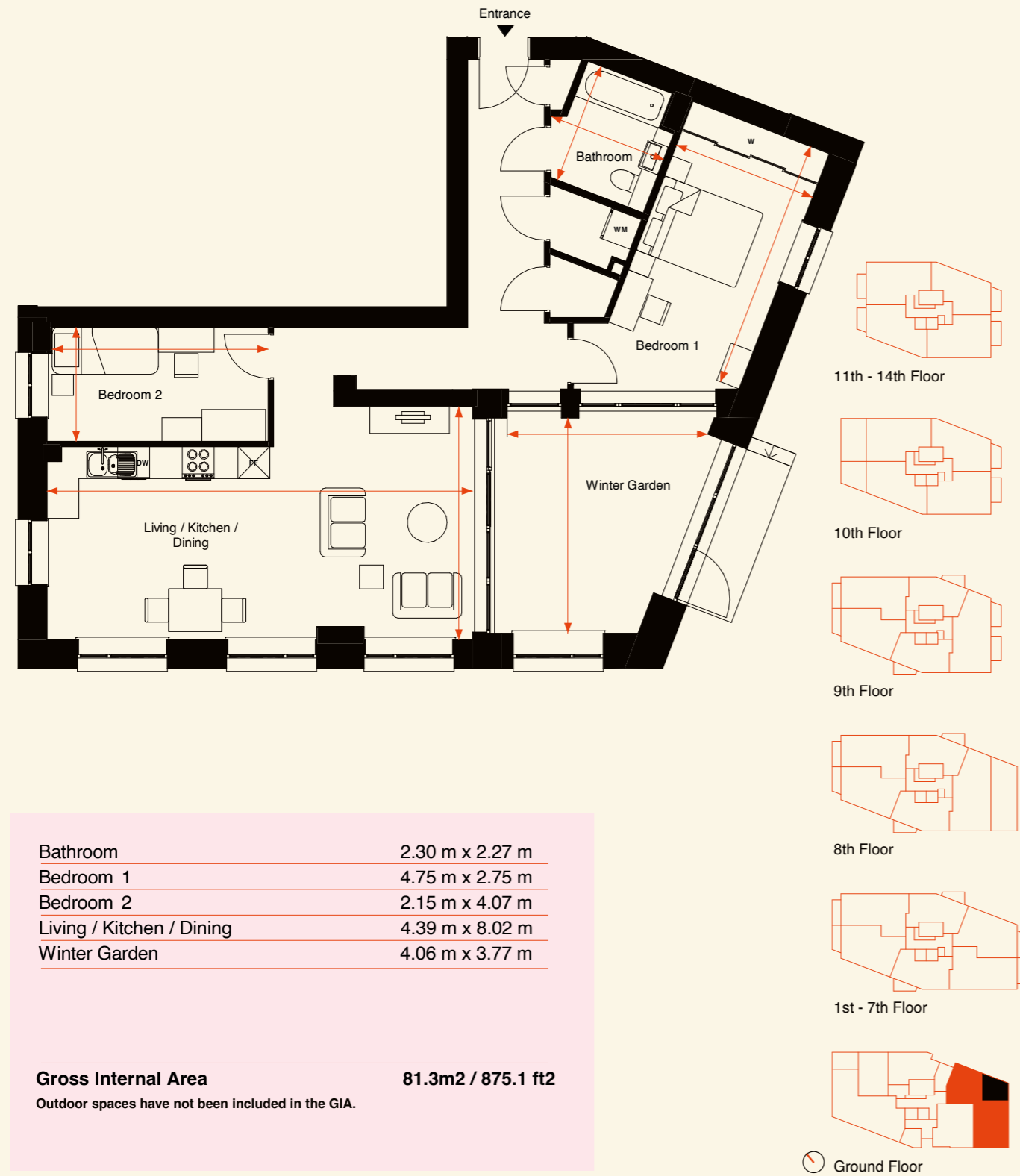
DW Dishwasher FF Fridge/Freezer W Wardrobe WM Wasing/Dryer

Floorplans are not to scale and are indicative only. Location of windows, doors, bathroom fittings, kitchen units and appliances may differ. Dimensions given are approximate and should not be used to order carpets or furniture. External area sizes and locations may differ from those illustrated.

# Amour Court

2 Bedroom – Type A02

APARTMENT: 74

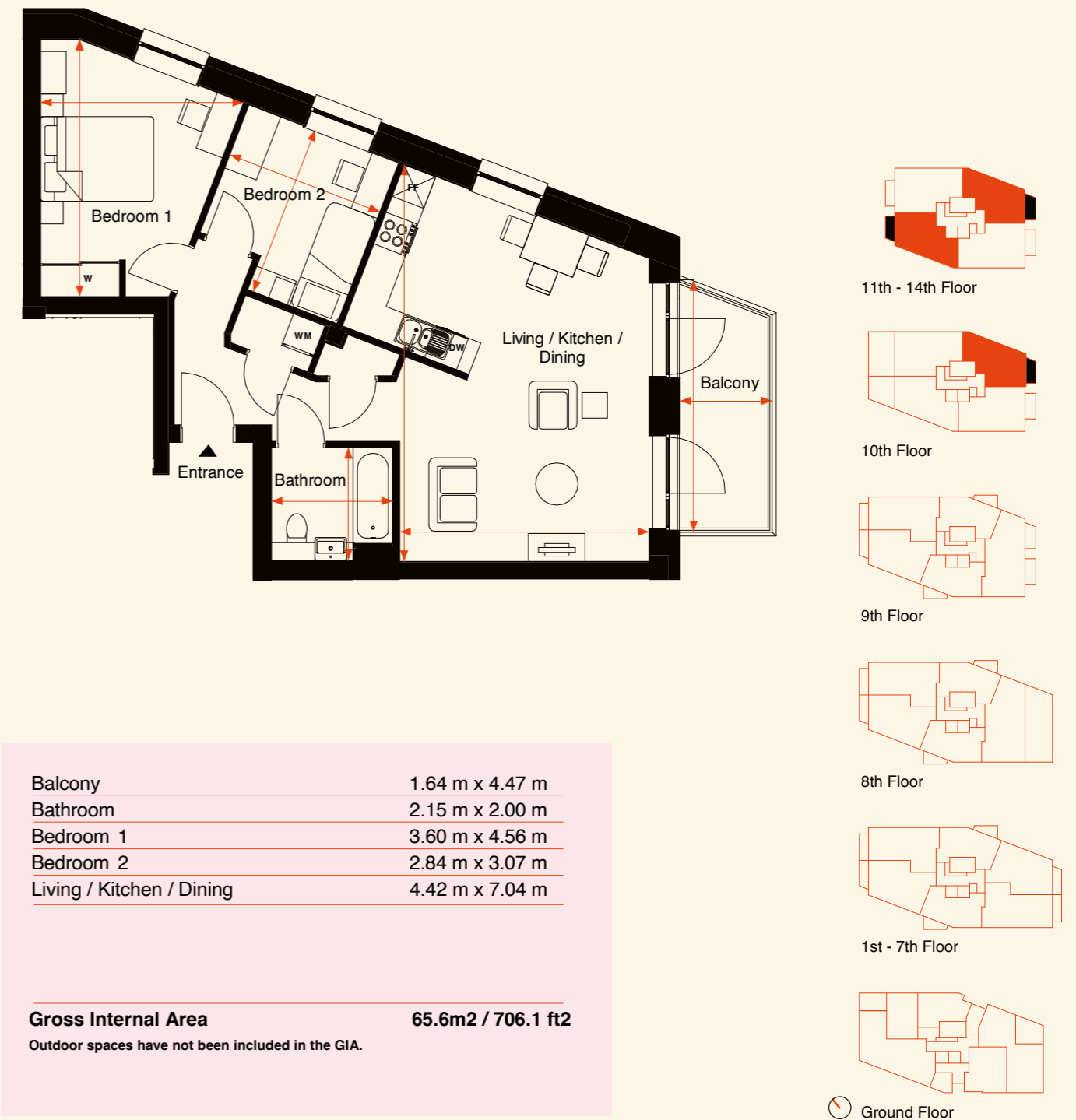


PAGE 08

# Amour Court

2 Bedroom – Type A07

APARTMENTS: 56, 58, 60, 62, 64, 66, 68, 70 & 72



PAGE 09

DW Dishwasher FF Fridge/Freezer W Wardrobe WM Wasing/Dryer

Floorplans are not to scale and are indicative only. Location of windows, doors, bathroom fittings, kitchen units and appliances may differ. Dimensions given are approximate and should not be used to order carpets or furniture. External area sizes and locations may differ from those illustrated.

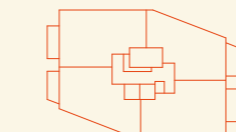
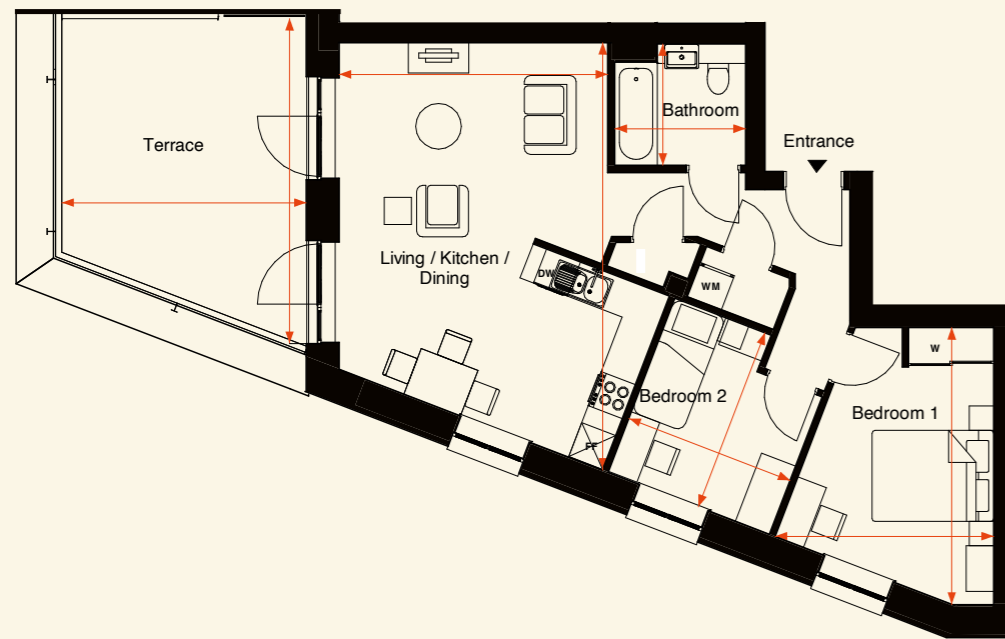
DW Dishwasher FF Fridge/Freezer W Wardrobe WM Wasing/Dryer

Floorplans are not to scale and are indicative only. Location of windows, doors, bathroom fittings, kitchen units and appliances may differ. Dimensions given are approximate and should not be used to order carpets or furniture. External area sizes and locations may differ from those illustrated.

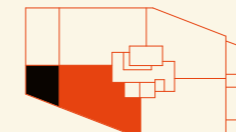
# Amour Court

2 Bedroom – Type A07A

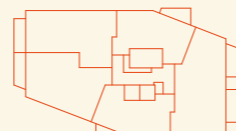
APARTMENT: 54



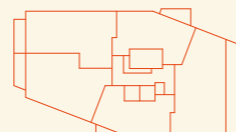
11th - 14th Floor



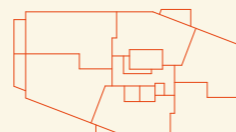
10th Floor



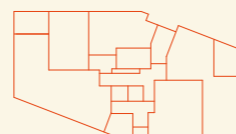
9th Floor



8th Floor



1st - 7th Floor



Ground Floor

Bathroom	2.15 m x 2.00 m
Bedroom 1	3.60 m x 4.56 m
Bedroom 2	2.84 m x 3.07 m
Living / Kitchen / Dining	4.42 m x 7.04 m
Terrace	4.02 m x 5.35 m

**Gross Internal Area** 65.6m<sup>2</sup> / 706.1ft<sup>2</sup>

Outdoor spaces have not been included in the GIA.

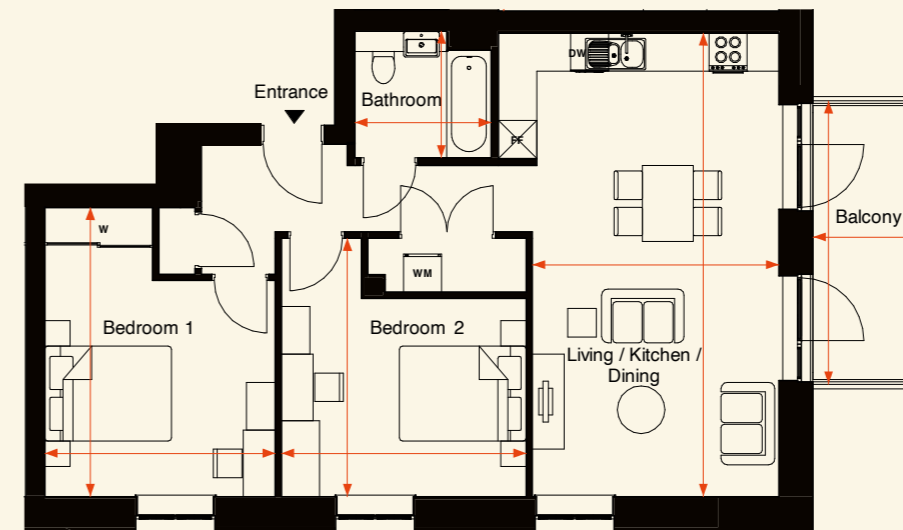
DW Dishwasher FF Fridge/Freezer W Wardrobe WM Wasing/Dryer

Floorplans are not to scale and are indicative only. Location of windows, doors, bathroom fittings, kitchen units and appliances may differ. Dimensions given are approximate and should not be used to order carpets or furniture. External area sizes and locations may differ from those illustrated.

# Amour Court

2 Bedroom – Type A08

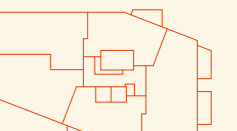
APARTMENTS: 57, 59, 61, 63, 65, 67, 69, 71 & 73



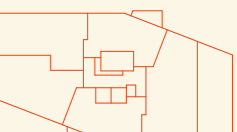
11th - 14th Floor



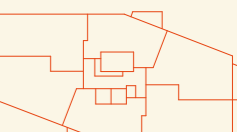
10th Floor



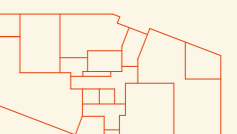
9th Floor



8th Floor



1st - 7th Floor



Ground Floor

Balcony	1.64 m x 4.47 m
Bathroom	2.15 m x 2.00 m
Bedroom 1	3.63 m x 4.56 m
Bedroom 2	3.86 m x 4.07 m
Living / Kitchen / Dining	3.89 m x 7.31 m

**Gross Internal Area** 74.4m<sup>2</sup> / 800.84ft<sup>2</sup>

Outdoor spaces have not been included in the GIA.

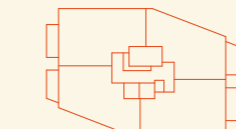
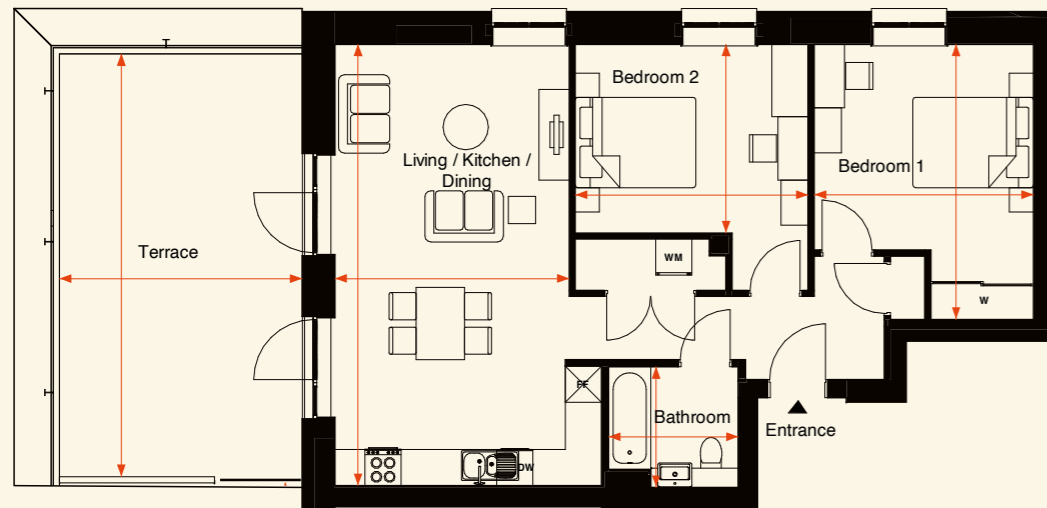
DW Dishwasher FF Fridge/Freezer W Wardrobe WM Wasing/Dryer

Floorplans are not to scale and are indicative only. Location of windows, doors, bathroom fittings, kitchen units and appliances may differ. Dimensions given are approximate and should not be used to order carpets or furniture. External area sizes and locations may differ from those illustrated.

# Amour Court

2 Bedroom – Type A08A

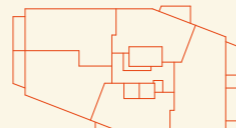
APARTMENT: 55



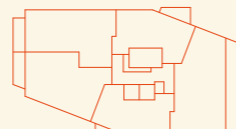
11th - 14th Floor



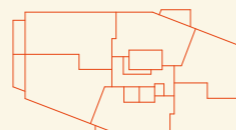
10th Floor



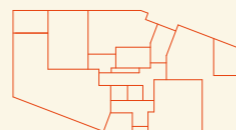
9th Floor



8th Floor



1st - 7th Floor



Ground Floor

Bathroom	2.15 m x 2.00 m
Bedroom 1	3.63 m x 4.56 m
Bedroom 2	3.86 m x 3.13 m
Living / Kitchen / Dining	3.89 m x 7.32 m
Terrace	4.02 m x 7.01 m

**Gross Internal Area** 74.4m<sup>2</sup> / 800.84ft<sup>2</sup>

Outdoor spaces have not been included in the GIA.

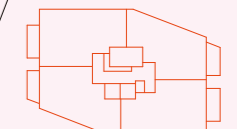
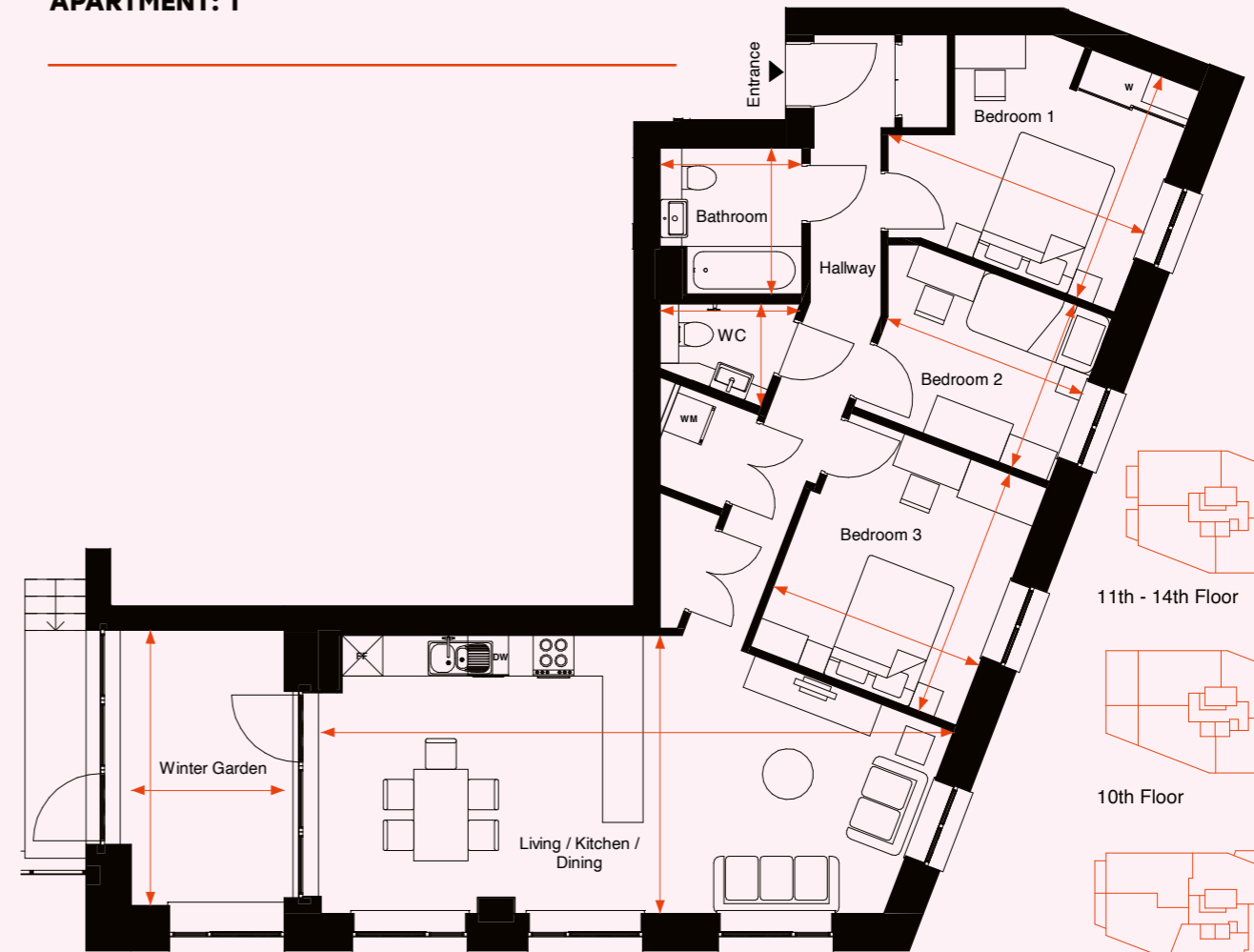
DW Dishwasher FF Fridge/Freezer W Wardrobe WM Wasing/Dryer

Floorplans are not to scale and are indicative only. Location of windows, doors, bathroom fittings, kitchen units and appliances may differ. Dimensions given are approximate and should not be used to order carpets or furniture. External area sizes and locations may differ from those illustrated.

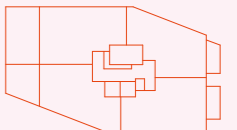
# Amour Court

3 Bedroom – Type A01

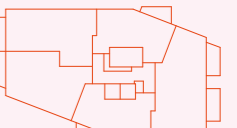
APARTMENT: 1



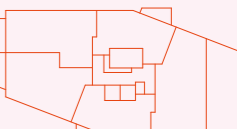
11th - 14th Floor



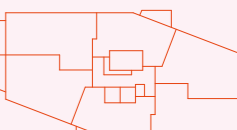
10th Floor



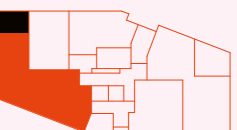
9th Floor



8th Floor



1st - 7th Floor



Ground Floor

Bathroom	2.16 m x 2.09 m
Bedroom 1	3.50 m x 4.06 m
Bedroom 2	2.58 m x 3.10 m
Bedroom 3	3.75 m x 3.25 m
Living / Kitchen / Dining	4.11 m x 9.34 m
WC	1.52 m x 2.07 m
Winter Garden	4.06 m x 2.26 m

**Gross Internal Area** 91.7m<sup>2</sup> / 987 ft<sup>2</sup>

Outdoor spaces have not been included in the GIA.

DW Dishwasher FF Fridge/Freezer W Wardrobe WM Wasing/Dryer

Floorplans are not to scale and are indicative only. Location of windows, doors, bathroom fittings, kitchen units and appliances may differ. Dimensions given are approximate and should not be used to order carpets or furniture. External area sizes and locations may differ from those illustrated.



# Naymar Court

3 Bedroom – Type BO1

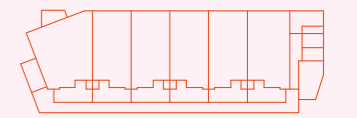
APARTMENT: 13 (WHEELCHAIR ADAPTABLE UNIT)

## NAYMAR COURT FLOORPLANS

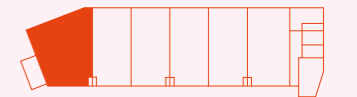


Bathroom	2.74 m x 3.15 m
Bedroom 1	3.68 m x 4.11 m
Bedroom 2	4.73 m x 3.38 m
Bedroom 3	3.64 m x 3.01 m
Kitchen / Dining	2.95 m x 4.47 m
Living Room	5.88 m x 3.17 m
Terrace (front)	3.61 m x 2.06 m
Terrace (Rear)	2.00 m x 2.90 m
WC	2.36 m x 1.80 m

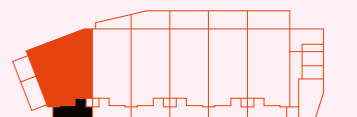
**Gross Internal Area** 118m<sup>2</sup> / 1,270.14ft<sup>2</sup>  
Outdoor spaces have not been included in the GIA.



2nd / 4th / 6th / 8th Floor



1st / 3rd / 5th / 7th / 9th Floor



Ground Floor

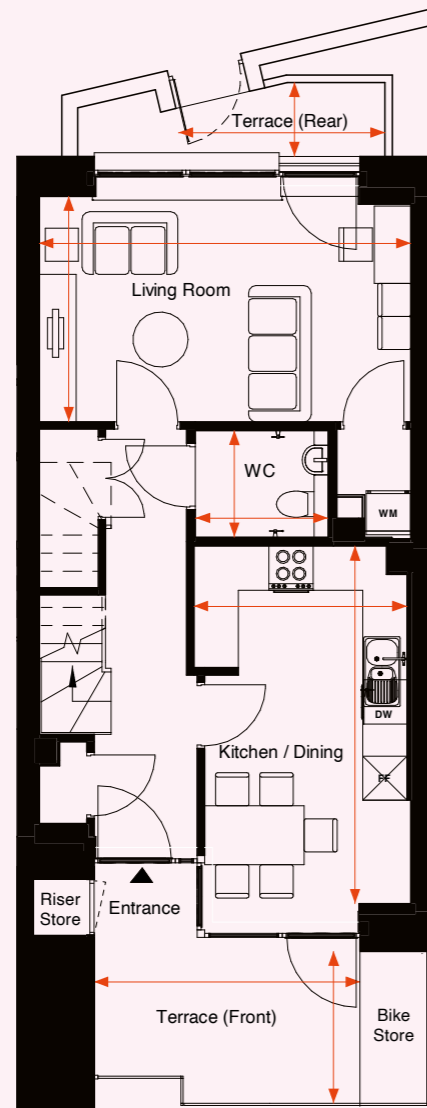
DW Dishwasher FF Fridge/Freezer W Wardrobe WM Wasing/Dryer

Floorplans are not to scale and are indicative only. Location of windows, doors, bathroom fittings, kitchen units and appliances may differ. Dimensions given are approximate and should not be used to order carpets or furniture. External area sizes and locations may differ from those illustrated.

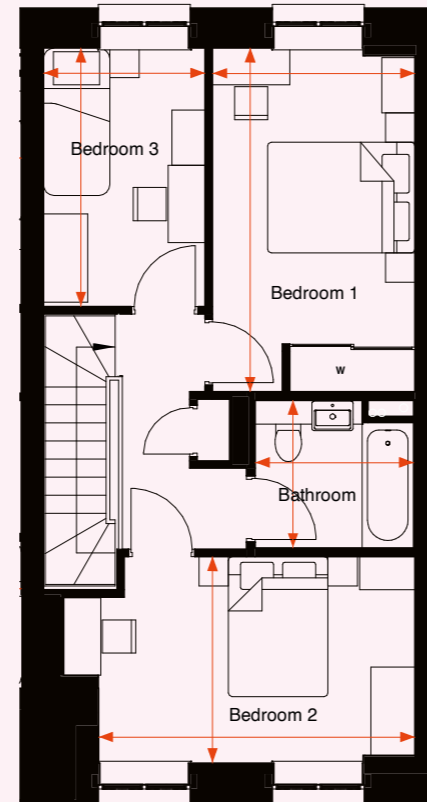
# Naymar Court

3 Bedroom – Type BO2A

APARTMENT: 14



Ground Floor

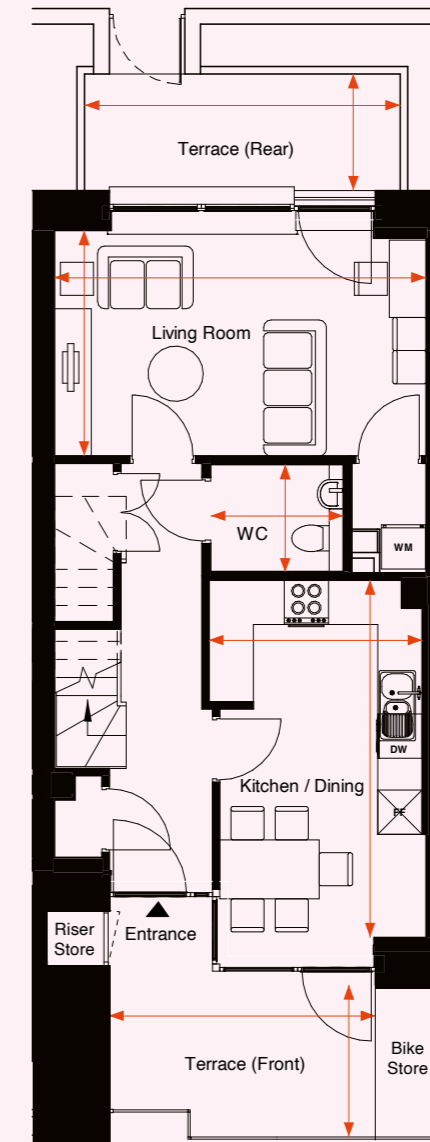


1st Floor

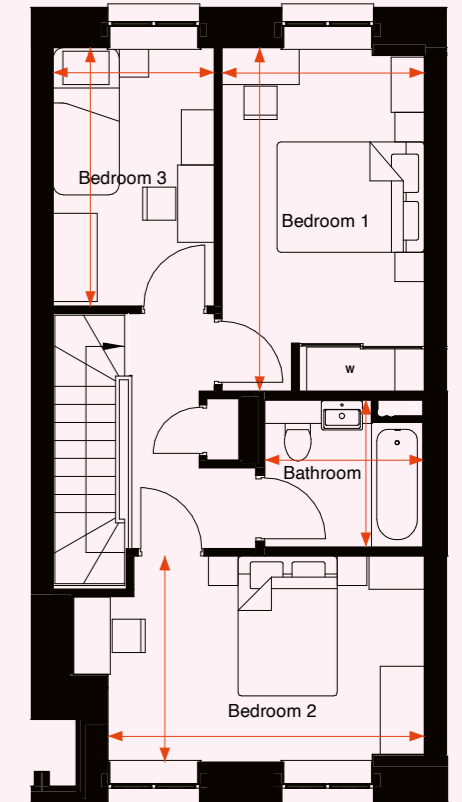
# Naymar Court

3 Bedroom – Type BO2

APARTMENT: 15, 16 & 17



Ground Floor

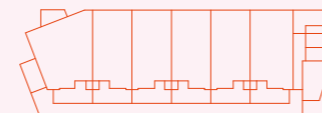


1st Floor

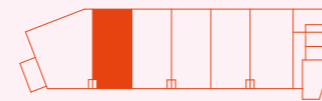
Bathroom	2.15 m x 2.00 m
Bedroom 1	2.75 m x 4.67 m
Bedroom 2	4.30 m x 2.80 m
Bedroom 3	2.19 m x 3.51 m
Kitchen / Dining	2.90 m x 4.85 m
Living Room	5.05 m x 3.06 m
Terrace (Front)	3.62 m x 2.06 m
Terrace (Rear)	2.80 m x 1.00 m
WC	1.80 m x 1.45 m

**Gross Internal Area** 94.8m<sup>2</sup> / 1,020.42ft<sup>2</sup>

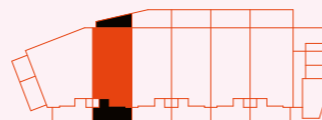
Outdoor spaces have not been included in the GIA.



2nd / 4th / 6th / 8th Floor



1st / 3rd / 5th / 7th / 9th Floor



Ground Floor

DW Dishwasher FF Fridge/Freezer W Wardrobe WM Wasing/Dryer

Floorplans are not to scale and are indicative only. Location of windows, doors, bathroom fittings, kitchen units and appliances may differ. Dimensions given are approximate and should not be used to order carpets or furniture. External area sizes and locations may differ from those illustrated.

Bathroom	2.17 m x 2.00 m
Bedroom 1	2.75 m x 4.67 m
Bedroom 2	4.30 m x 2.80 m
Bedroom 3	2.19 m x 3.51 m
Kitchen / Dining	2.90 m x 4.85 m
Living Room	5.05 m x 3.06 m
Terrace (Front)	3.62 m x 2.06 m
Terrace (Rear)	4.29 m x 1.59 m
WC	1.80 m x 1.47 m

**Gross Internal Area** 94.8m<sup>2</sup> / 1,020.42ft<sup>2</sup>

Outdoor spaces have not been included in the GIA.



2nd / 4th / 6th / 8th Floor



1st / 3rd / 5th / 7th / 9th Floor



Ground Floor

DW Dishwasher FF Fridge/Freezer W Wardrobe WM Wasing/Dryer

Floorplans are not to scale and are indicative only. Location of windows, doors, bathroom fittings, kitchen units and appliances may differ. Dimensions given are approximate and should not be used to order carpets or furniture. External area sizes and locations may differ from those illustrated.

# Naymar Court

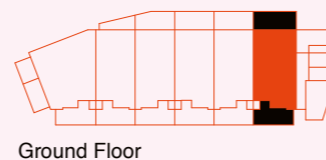
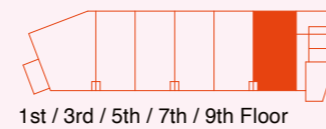
3 Bedroom – Type BO2W

APARTMENT: 18



Bathroom	2.09 m x 2.02 m
Bedroom 1	2.86 m x 4.67 m
Bedroom 2	4.41 m x 2.80 m
Bedroom 3	2.19 m x 3.51 m
Kitchen / Dining	3.01 m x 4.96 m
Living Room	5.16 m x 3.06 m
Terrace (Front)	3.62 m x 2.06 m
Terrace (Rear)	4.29 m x 1.59 m
WC	1.80 m x 1.47 m

**Gross Internal Area** 96.5m<sup>2</sup> / 1038.72ft<sup>2</sup>  
 Outdoor spaces have not been included in the GIA.



**DW** Dishwasher **FF** Fridge/Freezer **W** Wardrobe **WM** Wasing/Dryer

Floorplans are not to scale and are indicative only. Location of windows, doors, bathroom fittings, kitchen units and appliances may differ. Dimensions given are approximate and should not be used to order carpets or furniture. External area sizes and locations may differ from those illustrated.



Computer generated image



## About SNG

Our purpose is to provide good, affordable homes: the foundation for a better life, and our vision is thriving communities, over generations.

We're one of England's leading providers of quality homes. We love to build, and we take great pride in the homes we deliver and manage. We build homes for London Living Rent and Shared Ownership across London and the home counties.

We operate commercially but our profits are reinvested back into building more affordable homes and providing a first-class service to our customers. We provide homes with an impressive specification which, coupled with sustainable design features, means our homes are ideal for modern living.



---

Sovereign Network Homes is a charitable organisation and a subsidiary of Sovereign Network Group. All computer generated images (CGIs) used in these particulars are for illustrative purposes only, are not intended to provide an actual forecast or impression of the measurements, dimensions, layouts, placements, context and/or finishes of the buildings premises or landscaping within the development, and should not be relied upon as true or accurate. These brief particulars have been prepared and are intended as a guide to supplement an inspection or survey and do not form part of any offer or contract. Their accuracy is not guaranteed. They contain statement of opinion and in some instances we have relied upon information supplied by others. This brochure includes imagery for illustrative purposes only. The map is not to scale. Design elements and specification details may change without notice. You should verify the particulars on your visit to the site and with the sales agent. The particulars do not obviate the need for a survey and all the appropriate enquiries. Accordingly, there shall be no liability as a result of any effort or omission in the particulars or information given. All information believed to be correct at time of print. Travel times are approximate only and are subject to change.

**CONTACT**  
DETAILS