



EPC: No
EPC

Elvedon Place, Off Norwich Road, Thetford
Shared Ownership 30% Price: £118,500

Abbotts







SHARED OWNERSHIP Four bedroom House available to purchase from a 30% share at £118,500 with a deposit from £5,925. Maximum amount available to purchase initially is 75%. Full market value £395,000. A great opportunity to get onto the property ladder and live in this modern spacious four bedroom house.

'The Chiddingstone' is a fantastic four-bedroom home featuring a modern open plan spacious kitchen/dining/family area, with double doors leading into the garden - perfect for entertaining or enjoying the space with the family. There is a separate living room to the front of the property and a beneficial utility just off the kitchen too. Upstairs, the main bedroom is over 4.5m long with built in wardrobe, storage needs and also benefits with an en suite. Three further bedrooms can be found upstairs along with a family bathroom and further storage cupboard off the landing. Externally the fully enclosed rear garden is turfed and an adjacent garage with driveway to the property to satisfy the family parking needs.

Welcome to Sovereign Gate a charming development completed by the highly regarded Tilia Homes. Built with sustainability and energy efficiency in mind these homes are ideal for a range of buyers looking for their next home.



Plots as drawn: 136 and 150
 Handed: 125

1,358 sq. m / 126.16 sq. ft



GROUND FLOOR

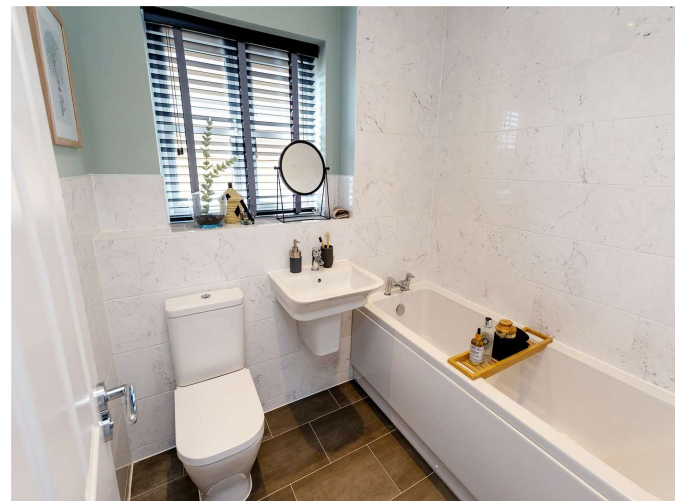


FIRST FLOOR

ST: Store WC: Water Closet B: Boiler W: Wardrobe *Plot specific window

DIMENSIONS	m	ft
Living	5.27m x 3.38m	17'3" x 11'1"
Kitchen/Dining/Family	6.31m x 4.59m	20'8" x 15'1"
Utility	1.95m x 1.61m	6'5" x 5'3"

DIMENSIONS	m	ft
Bedroom 1	4.52m x 3.23m	14'10" x 10'7"
En-suite	2.43m x 1.44m	8'0" x 4'9"
Bedroom 2	3.89m x 3.23m	12'9" x 10'7"
Bedroom 3	2.98m x 2.76m	9'9" x 9'1"
Bedroom 4	2.98m x 2.53m	9'9" x 8'4"
Bathroom	2.25m x 2.16m	7'5" x 7'1"



Viewing by appointment

T: 01638 713056

E: mildenhall@abbottscountrywide.co.uk

39 King Street, Mildenhall, Suffolk, IP28 7EZ



Interested parties should satisfy themselves, by inspection or otherwise as to the accuracy of the description given and any floor plans shown in these property details. All measurements, distances and areas listed are approximate. Fixtures, fittings and other items are NOT included unless specified in these details. Please note that any services, heating systems, or appliances have not been tested and no warranty can be given or implied as to their working order.

Abbotts is a trading name of Countrywide Estate Agents, Registered in England Number 00789476. Registered Office Greenwood House, 1st Floor, 91-99 New London Road, Chelmsford, Essex, CM2 0PP. VAT number 500 2481 05

Code: MIL_AQC240402_R6PL_8