

The Ramsdell Century Mill

4-bedroom home, sleeps 6



4 | 

1 | 

1 | 



Artist's impression

Key features

- Two double bedrooms
- Downstairs W.C.
- Open plan kitchen and dining room
- Separate living room
- Driveway parking



The Ramsdell

Available plots

16, 17, 33, 34,
55, 56, 90 or 106

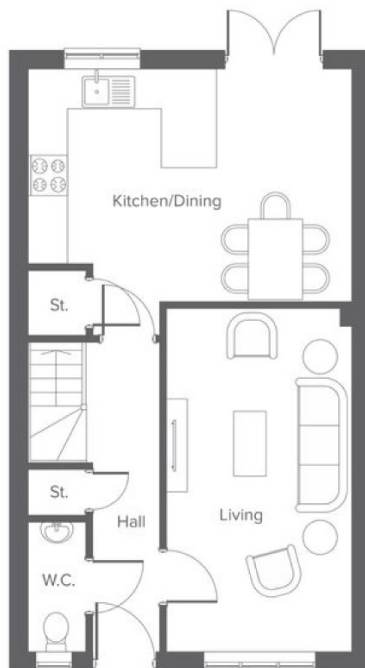
George Street, Farnworth, BL4 9QT

A collection of 106 beautifully designed new homes

The Ramsdell Century Mill

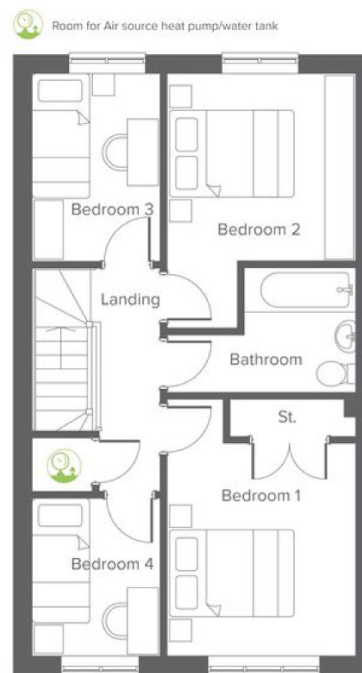
4-bedroom home, sleeps 6

Ground floor




Room	Metric	Imperial
Kitchen/Dining	5.29 x 4.31	17'4" x 14'1"
Living	3.06 x 5.55	10'0" x 18'2"
W.C.	0.95 x 2.10	3'1" x 6'10"

First floor




Room	Metric	Imperial
Bedroom 1	3.12 x 4.16	10'2" x 13'7"
Bedroom 2	3.12 x 3.04	10'2" x 9'11"
Bedroom 3	2.08 x 3.04	6'9" x 9'11"
Bedroom 4	2.08 x 2.56	6'9" x 8'4"
Bathroom	3.12 x 2.03	10'2" x 6'7"


Total size **97.5 m² / 1,050.3 ft²**

 Room for Air source heat pump/water tank

Get in touch

 01204 896180

 [yourhousinggroup.co.uk](https://www.yourhousinggroup.co.uk)

 @yourhousing

 @Your_Housing

 yourhousinggroup

 yhgtv