

The Gosford Century Mill

3-bedroom home, sleeps 4



3 | 

2 | 

1 | 



Artist's impression

Key features

- One double bedroom & two singles
- En suite to master bedroom
- Downstairs W.C.
- Open plan kitchen and dining room
- Separate living room
- Driveway parking



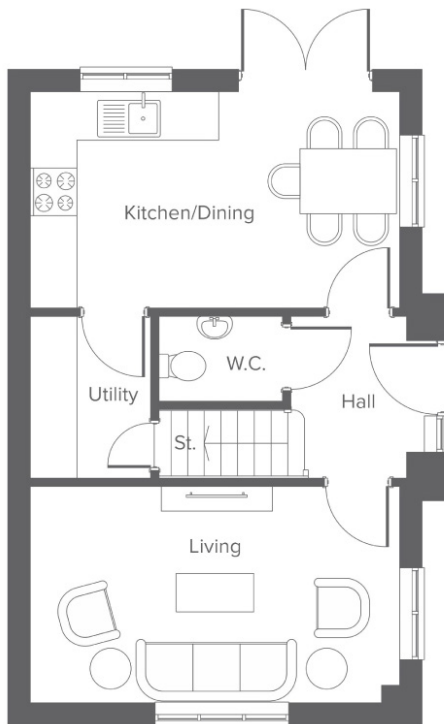
The Gosford
Available plots
3, 58 or 80

George Street, Farnworth, BL4 9QT
A collection of 106 beautifully designed new homes

The Gosford Century Mill

3-bedroom home, sleeps 4

Ground floor



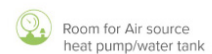
First floor




Room	Metric	Imperial
Kitchen/Dining	5.04 x 2.95	16'6" x 9'8"
Living	5.04 x 5.0	16'6" x 16'4"
W.C.	1.68 x 1.16	5'6" x 3'9"
Utility	1.69 x 2.95	5'6" x 9'8"

Room	Metric	Imperial
Bedroom 1	3.56 x 2.95	11'8" x 9'8"
Bedroom 2	2.45 x 2.95	8'0" x 9'8"
Bedroom 3	2.50 x 2.95	7'10" x 9'8"
Bathroom	1.73 x 2.20	5'8" x 7'2"
En-suite	1.39 x 2.95	4'6" x 9'8"

Total size **83.2 m² / 895.6 ft²**



Get in touch

 01204 896180

 [yourhousinggroup.co.uk](https://www.yourhousinggroup.co.uk)

 @yourhousing

 @Your_Housing

 yourhousinggroup

 yhgtv