

HENDON
NW9

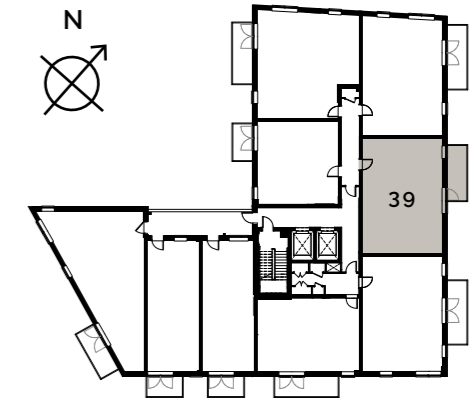
Living/Kitchen/Dining	7.06m x 6.71m	23'2" x 22'0"
Bedroom 1	5.31m x 3.30m	17'5" x 10'10"
Balcony	4.48m x 1.75m	14'8" x 5'9"

Ceiling heights may vary with areas below 2.3 meters, please speak to a member of the sales team for more information.

Floorplans shown for Square Roots Hendon are for approximate measurements only. Exact layouts and sizes may vary. All measurements may vary within a tolerance of +/-50mm. The dimensions are not intended to be used for carpet sizes, appliance sizes or items of furniture. Furniture layouts are indicative only. Kitchen layout indicative only. Please ask Sales Consultant for further information.

APARTMENT 39

REDWING COURT 4TH FLOOR



KEY

- ◄► Measurement Points
- SC Service Cupboard
- SW Space for Wardrobe
- WD Washer Dryer
- S Store Cupboard