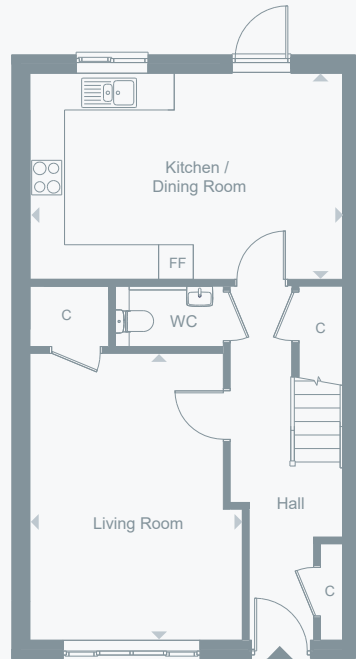


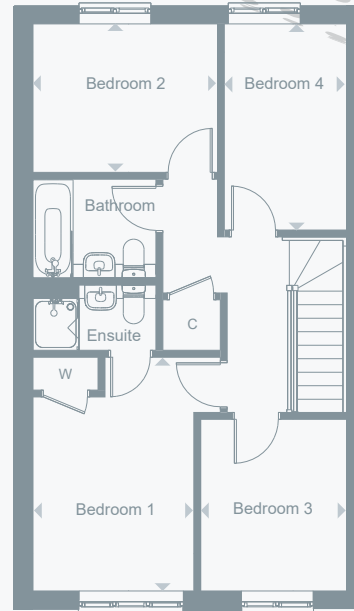
THE SKYLARK FOUR BEDROOM HOUSE

PLOTS 16, 24, 25*, 28 & 29*

*Plots are handed to the plans drawn



Ground Floor



First Floor

Floor plans are not to scale and are indicative only. Location of windows, doors, kitchen units and appliances may differ. Doors may swing in the opposite direction to that shown on selected apartments. Dimensions, which are taken from the indicated points of measurement, are for guidance only and are not intended to be used to calculate space for items of furniture. Total areas are provided as gross internal areas and are subject to variance. Please speak to our Sales Consultant for further information.

DIMENSIONS

Total Area 106.7 m² 1,149 ft²

Living Room

4.97m x 3.68m 16' 3" x 12' 1"

Kitchen / Dining Room

5.43m x 3.57m 17' 8" x 11' 7"

Bedroom 1

4.05m x 2.79m 13' 3" x 9' 1"

Bedroom 2

3.20m x 2.57m 10' 5" x 8' 4"

Bedroom 3

2.97m x 2.52m 9' 8" x 8' 3"

Bedroom 4

3.57m x 2.11m 11' 7" x 7' 0"

KEY

F/F Fridge/Freezer
W Wardrobe
C Cupboard



- THE REDSTART 2 Bedroom House
- THE GOLDCREST 3 Bedroom House
- THE GREENFINCH 3 Bedroom House
- THE SKYLARK 4 Bedroom House
- Affordable / Social Rent Houses



WINGS
WOOD

WOODGATE CHICHESTER

PHASE 2

THE SKYLARK

4 bedroom houses with Shared Ownership

0300 555 2171

sales@southernhousing.org.uk
shnewhomes.co.uk/wingswood-ph2

SOUTHERN
HOUSING
new homes