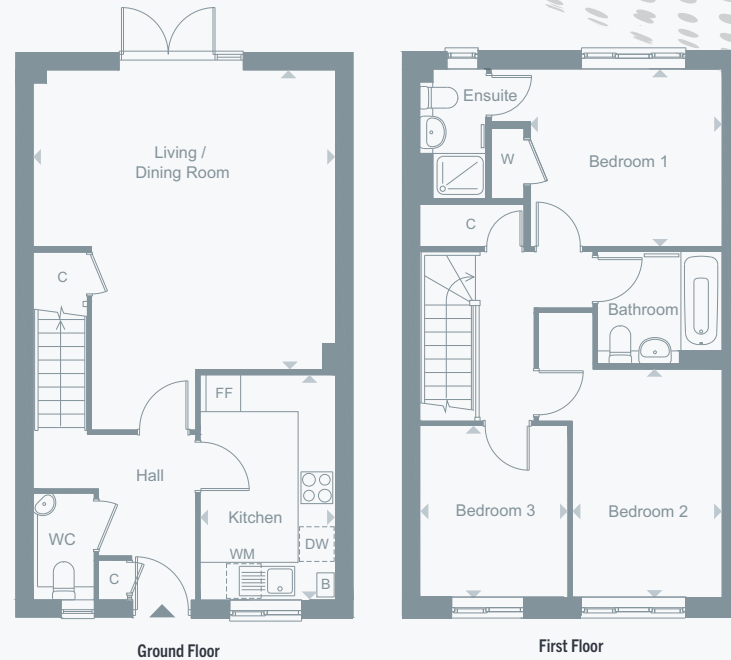


THE GOLDCREST THREE BEDROOM HOUSE

PLOT 5*, 6, 7, 15, 35 & 37*

*Plot is handed to the plans drawn



Floor plans are not to scale and are indicative only. Location of windows, doors, kitchen units and appliances may differ. Doors may swing in the opposite direction to that shown on selected apartments. Dimensions, which are taken from the indicated points of measurement, are for guidance only and are not intended to be used to calculate space for items of furniture. Total areas are provided as gross internal areas and are subject to variance. Please speak to our Sales Consultant for further information.

DIMENSIONS

Total Area 95.3 m² 1,026 ft²

Living / Dining Room

5.16m x 5.21m 17' 9" x 16' 9"

Kitchen

3.87m x 2.32m 12' 7" x 7' 6"

Bedroom 1

3.27m x 3.01m 10' 7" x 9' 9"

Bedroom 2

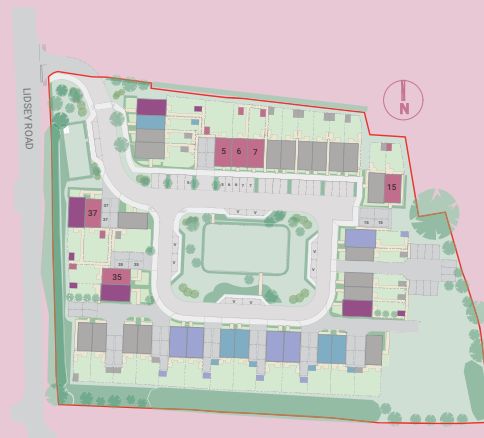
3.97m x 2.57m 13' 0" x 8' 4"

Bedroom 3

2.97m x 2.52m 9' 7" x 8' 2"

KEY

F/F Fridge/Freezer
 D/W Dishwasher
 WM Washing Machine
 B Boiler
 W Wardrobe
 C Cupboard



- THE REDSTART 2 Bedroom House
- THE GOLDCREST 3 Bedroom House
- THE GREENFINCH 3 Bedroom House
- THE SKYLARK 4 Bedroom House
- Affordable / Social Rent Houses



WINGS
WOOD

WOODGATE CHICHESTER

PHASE 2

THE GOLDCREST

3 bedroom
houses with
Shared
Ownership

0300 555 2171

sales@southernhousing.org.uk
 shnewhomes.co.uk/wingswood-ph2

SOUTHERN
HOUSING
new homes