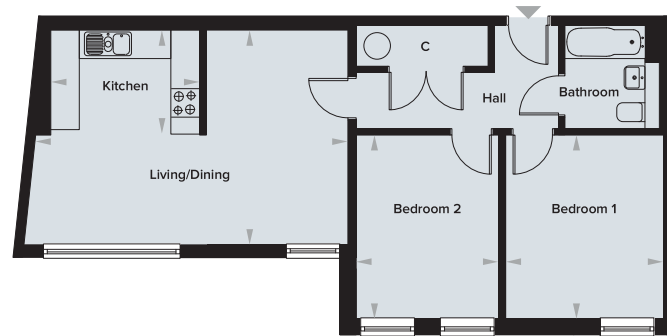


PLOT 37

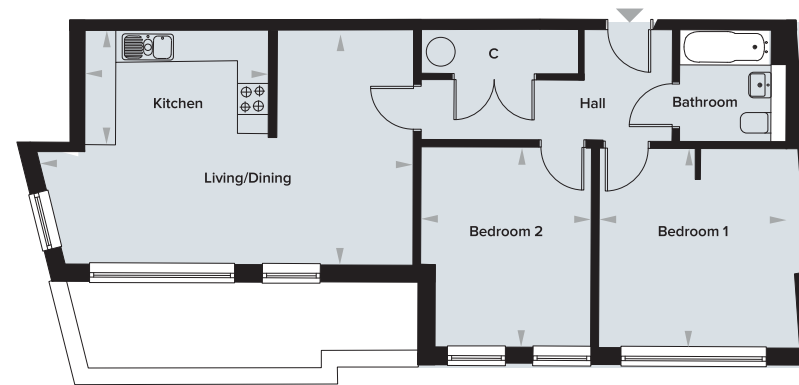
🛏 x 2



Kitchen	3.16m x 2.06m	10' 4" x 6' 9"	Bedroom 1	3.89m x 3.31m	11' 1" x 10' 10"
Living/Dining	6.82m x 4.65m	22' 4" x 15' 3"	Bedroom 2	3.91m x 3.02m	12' 9" x 9' 10"

PLOT 39

🛏 x 2



Kitchen	3.57m x 2.13m	11' 8" x 6' 11"	Bedroom 1	3.87m x 3.67m	12' 8" x 12' 0"
Living/Dining	7.27m x 4.50m	23' 10" x 14' 9"	Bedroom 2	3.94m x 3.29m	12' 11" x 10' 9"