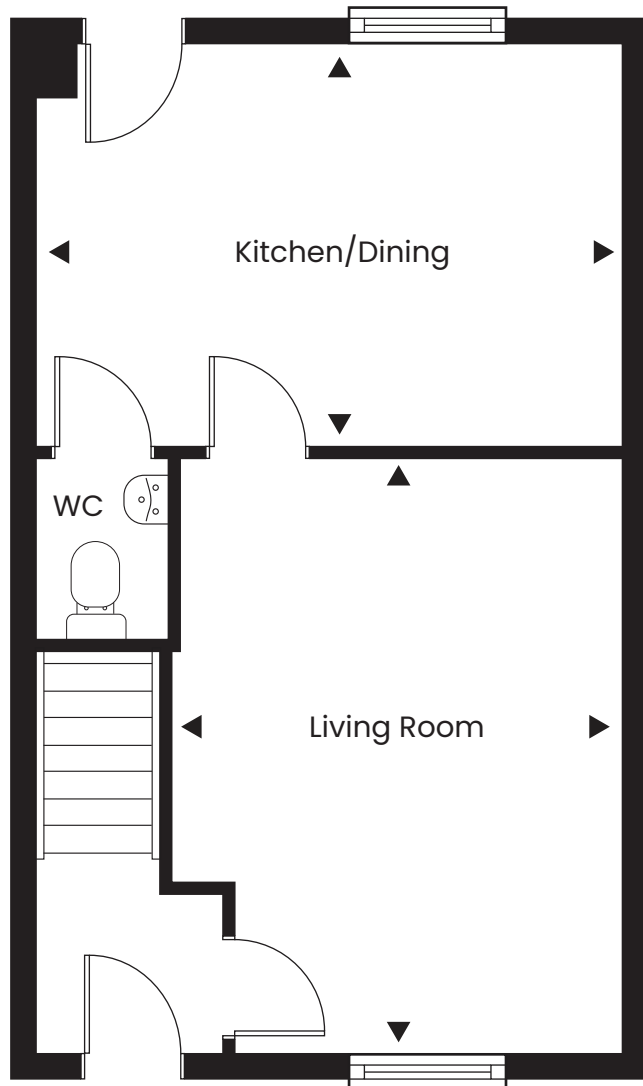


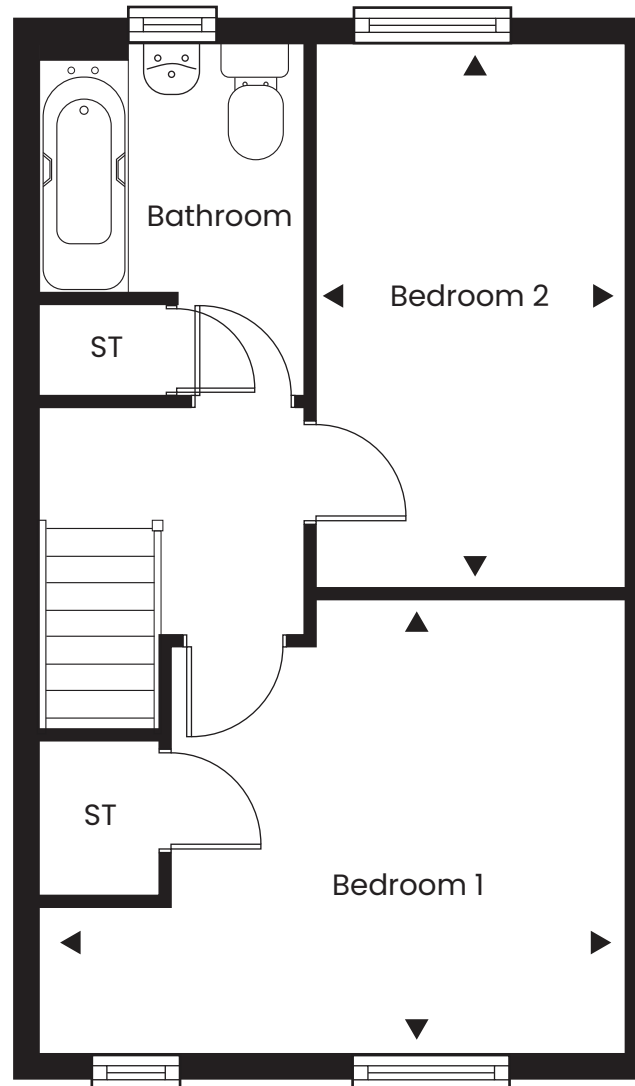
TODDINGTON MEADOWS, TODDINGTON

2 bedroom semi-detached house

PLOT 27



Ground Floor



First Floor

DIMENSIONS

Lounge/Dining	3.71m x 4.81m	12'02" x 15'10"
Kitchen	4.87m x 3.21m	16'00" x 10'06"
Bedroom 1	4.87m x 3.62m	16'00" x 11'11"
Bedroom 2	2.62m x 4.40m	08'07" x 14'05"

* max measurement taken

Disclaimer: Plan shown is indicative and certain plots on site will be mirrored. Window positions may differ from those shown from plot to plot, please consult with the sales advisor. Room dimensions if shown are subject to change and are for guidance only. Whilst we endeavour to make our property details accurate and reliable these particulars are set out as a general outline only for the guidance of intended purchasers or lessees and do not constitute as a full or part offer or contract. Other details are given without responsibility and intending purchasers or tenants should not rely on them as statements or representations of fact but must satisfy themselves by inspection or otherwise as to the correctness of them. The purchaser is advised to obtain verification from their Solicitor or Surveyor to their own satisfaction.