



VIVID AT

# HOUNSOME FIELDS

BASINGSTOKE, HAMPSHIRE





WE'RE ALL ABOUT  
HELPING PEOPLE  
TO FIND THEIR  
PERFECT PLACE...

Example VIVID showhome from a previous development

1

View the listing for Hounsome Fields, check if you meet the local connection criteria, then apply online: <https://yourvividhome.co.uk/developments/hounscome-fields>

2

Once we've received your application, we'll check you're eligible to apply for Shared Ownership. One of our Sales Officers will get in touch to let you know if you meet the priority criteria for the development, this can take a few weeks when we're busy.

3

If we're able to progress your application, we'll signpost you to one of our panel financial advisors\* to talk about your affordability and the share you could purchase (even if you're a potential cash buyer). If you choose to use them of your own financial advisor, they'll send us your completed financial assessment and some more documents like proof of your deposit and mortgage AIP (Agreement in Principle). Please note, VIVID are not a credit broker.

4

We'll also ask you to email us which plots you're interested in.

5

We'll review all the documents and check the development criteria to see if we're able to offer you a home. We'll tell you as soon as we can, sometimes this may take a few weeks whilst we complete this process

\*There are many financial advisors you could use to understand and apply for a Shared Ownership mortgage on your behalf. Every financial advisor has a duty to find you the mortgage that's best for you. They'll keep in mind VIVID's timescales for any mortgage that is offered to you, as it needs to meet our sales timeframe. We're signposting you to our panel Financial Advisors as they are experts in Shared Ownership and know the VIVID process too. They'll complete your affordability checks free of charge. If you're offered a home and apply for a mortgage with them there will be a £250 fee, please check with your panel financial advisor when this will be payable. If you choose to use another Financial Advisor that's absolutely fine, and your choice won't impact any VIVID decision on whether you buy a home from us. Please note; VIVID is not a credit broker.

# TRUST VIVID

VIVID have been outstanding from the very beginning of my application - they professionally supported me through the whole process explained every step and made me feel part of the VIVID family, I can't stress how amazing all the VIVID team have been - thank you.

Susan - Shared Owner

The service from start to finish was amazing. Fantastic communication, things happened when they said they would and the whole process was so easy.

Nicola - Shared Owner

Always got a prompt response to my emails. I was kept informed throughout the process. Lovely staff.

Kara - Shared Owner



Example VIVID showhome from a previous development





Photograph of nearby Basingstoke

## THE DEVELOPMENT

---

**Hounsme Fields is a selection of homes located close to the vibrant town of Basingstoke**

This is a town where old meets new, culturally there is an eclectic mix of museums, art galleries and theatres and a varied choice of restaurants. In the heart of the old town you'll find the market square which is steeped in history.

The more modern part of the town offers a two-storey shopping centre, Festival Place. This plays host to a number of large high-street brands, restaurants and a 10-screen Vue cinema.

# THE LOCATION

---

**Basingstoke is a town where old meets new with a variety of amenities and access further afield**

There's a great choice of Ofsted-rated Good and Outstanding schools within a three-mile radius including the 'Outstanding' Kempshott Infant School, and Kempshott Junior School both just over a mile away. For outdoor enthusiasts, Hounsme Fields is close to the countryside and the Wessex Downs is within easy reach too.

Access to the M3 is just over a mile away, from here you can easily connect to Winchester, Southampton and Portsmouth. From Basingstoke station you can get you to London Waterloo in less than an hour



Photograph of nearby Basingstoke



# Hounsosome Fields

Plot 396  
1 BEDROOM APARTMENT

## SECOND FLOOR

Lounge / Dining Room /  
Kitchen 6.11m x 4.03m  
(20'-1" x 13'-3")

Bedroom 4.77m x 2.81m  
(15'-8" x 9'-3")



SECOND FLOOR

\*B = Boiler

Please note floorplans are not to scale and are indicative only. Total areas are provided as gross internal areas and are subject to variance and these plans do not act as part of a legally binding contract, warranty or guarantee. These plans may not be to scale and dimensions may vary during the build programme. It is common for fixtures and fittings to change during the build programme, for example boilers. Location of windows, doors, kitchen units and appliances may differ. Doors may swing in to the opposite direction to that shown on selected houses. Dimensions, which are taken from the indicated points of measurement are for guidance only and are not intended to be used to calculate the space needed for specific pieces of furniture. If your home is set within a terrace row, the position of the windows may vary from those shown on this plan. The property may also be a handed (mirrored) version of the layout shown here. We advise that you do not order any furniture based on these indicative plans, please wait until you can measure up fully, inside the property. Please speak to a member of our sales team about when you can gain access to take measurements. We will not be responsible for costs incurred due to ordering incorrect furniture. VIVID Housing Limited is registered in England and Wales as a registered society under the Co-operative and Community Benefit Societies Act 2014 under number 7544 with exempt charity status and as a registered provider of social housing with the Homes and Communities Agency under number 4850. Our registered office is at Peninsular House, Wharf Road, Portsmouth, Hampshire, PO2 8HB. All information correct at time of creation - February 2024.

VIVID

VIVID

# Hounsosome Fields

Plots 388,389,390



GROUND FLOOR

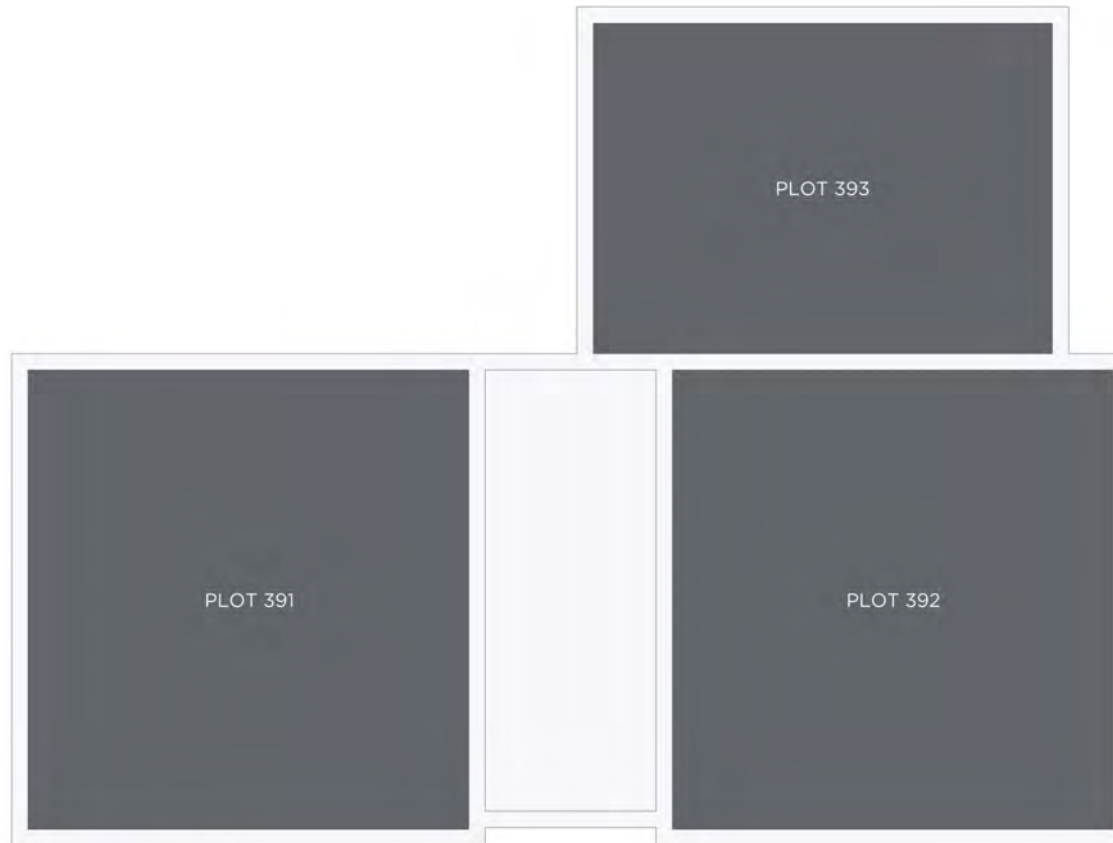
Please note floorplans are not to scale and are indicative only, total areas are provided as gross internal areas and are subject to variance and these plans do not act as part of a legally binding contract, warranty or guarantee. These plans may not be to scale and dimensions may vary during the build programme. It is common for fixtures and fittings to change during the build programme, for example boilers Location of windows, doors, kitchen units and appliances may differ. Doors may swing in to the opposite direction to that shown on selected houses. Dimensions, which are taken from the indicated points of measurement are for guidance only and are not intended to be used to calculate the space needed for specific pieces of furniture. If your home is set within a terrace row, the position of the windows may vary from those shown on this plan. The property may also be a handed (mirrored) version of the layout shown here. We advise that you do not order any furniture based on these indicative plans, please wait until you can measure up fully, inside the property. Please speak to a member of our sales team about when you can gain access to take measurements. We will not be responsible for costs incurred due to ordering incorrect furniture. VIVID Housing Limited is registered in England and Wales as a registered society under the Co-operative and Community Benefit Societies Act 2014 under number 7544 with exempt charity status and as a registered provider of social housing with the Homes and Communities Agency under number 4850. Our registered office is at Peninsular House, Wharf Road, Portsmouth, Hampshire, PO2 8HB. All information correct at time of creation - February 2024.

VIVID

VIVID

# Hounsosome Fields

Plots 391,392,393



FIRST FLOOR

Please note floorplans are not to scale and are indicative only. Total areas are provided as gross internal areas and are subject to variance and these plans do not act as part of a legally binding contract, warranty or guarantee. These plans may not be to scale and dimensions may vary during the build programme. It is common for fixtures and fittings to change during the build programme, for example boilers. Location of windows, doors, kitchen units and appliances may differ. Doors may swing in to the opposite direction to that shown on selected houses. Dimensions, which are taken from the indicated points of measurement are for guidance only and are not intended to be used to calculate the space needed for specific pieces of furniture. If your home is set within a terrace row, the position of the windows may vary from those shown on this plan. The property may also be a handed (mirrored) version of the layout shown here. We advise that you do not order any furniture based on these indicative plans, please wait until you can measure up fully, inside the property. Please speak to a member of our sales team about when you can gain access to take measurements. We will not be responsible for costs incurred due to ordering incorrect furniture. VIVID Housing Limited is registered in England and Wales as a registered society under the Co-operative and Community Benefit Societies Act 2014 under number 7544 with exempt charity status and as a registered provider of social housing with the Homes and Communities Agency under number 4850. Our registered office is at Peninsular House, Wharf Road, Portsmouth, Hampshire, PO2 8HB. All information correct at time of creation - February 2024.

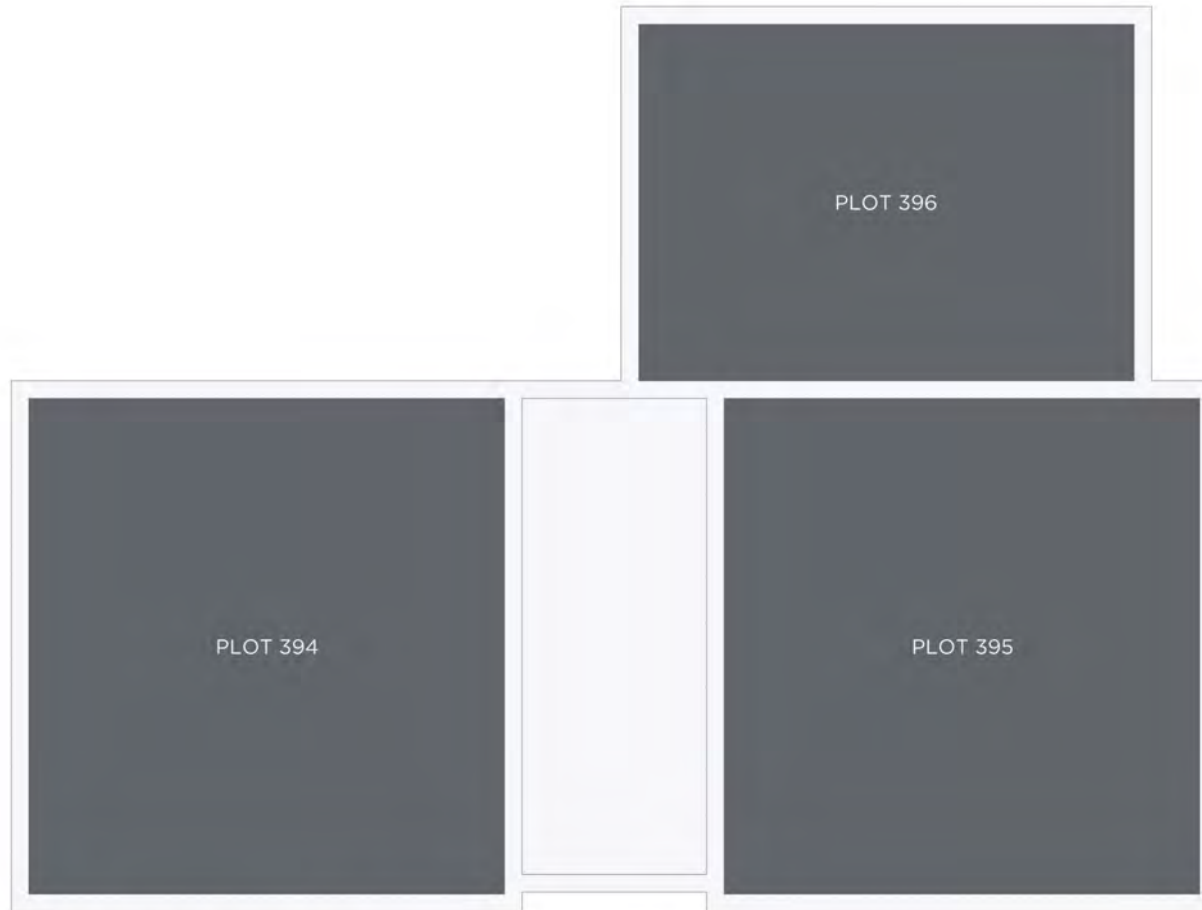
VIVID

VIVID



# Hounsosome Fields

Plots 394,395,396



## SECOND FLOOR

Please note floorplans are not to scale and are indicative only. Total areas are provided as gross internal areas and are subject to variance and these plans do not act as part of a legally binding contract, warranty or guarantee. These plans may not be to scale and dimensions may vary during the build programme. It is common for fixtures and fittings to change during the build programme, for example boilers. Location of windows, doors, kitchen units and appliances may differ. Doors may swing in to the opposite direction to that shown on selected houses. Dimensions, which are taken from the indicated points of measurement are for guidance only and are not intended to be used to calculate the space needed for specific pieces of furniture. If your home is set within a terrace row, the position of the windows may vary from those shown on this plan. The property may also be a handed (mirrored) version of the layout shown here. We advise that you do not order any furniture based on these indicative plans, please wait until you can measure up fully, inside the property. Please speak to a member of our sales team about when you can gain access to take measurements. We will not be responsible for costs incurred due to ordering incorrect furniture. VIVID Housing Limited is registered in England and Wales as a registered society under the Co-operative and Community Benefit Societies Act 2014 under number 7544 with exempt charity status and as a registered provider of social housing with the Homes and Communities Agency under number 4850. Our registered office is at Peninsular House, Wharf Road, Portsmouth, Hampshire, PO2 8HB. All information correct at time of creation - February 2024.

VIVID

# Hounsome Fields

Plots 388-396  
1-2 BEDROOM APARTMENTS



Please note floorplans are not to scale and are indicative only, total areas are provided as gross internal areas and are subject to variance and these plans do not act as part of a legally binding contract, warranty or guarantee. These plans may not be to scale and dimensions may vary during the build programme. It is common for fixtures and fittings to change during the build programme, for example boilers Location of windows, doors, kitchen units and appliances may differ. Doors may swing in to the opposite direction to that shown on selected houses. Dimensions, which are taken from the indicated points of measurement are for guidance only and are not intended to be used to calculate the space needed for specific pieces of furniture. If your home is set within a terrace row, the position of the windows may vary from those shown on this plan. The property may also be a handed (mirrored) version of the layout shown here. We advise that you do not order any furniture based on these indicative plans, please wait until you can measure up fully, inside the property. Please speak to a member of our sales team about when you can gain access to take measurements. We will not be responsible for costs incurred due to ordering incorrect furniture. VIVID Housing Limited is registered in England and Wales as a registered society under the Co-operative and Community Benefit Societies Act 2014 under number 7544 with exempt charity status and as a registered provider of social housing with the Homes and Communities Agency under number 4850. Our registered office is at Peninsular House, Wharf Road, Portsmouth, Hampshire, PO2 8HB. All information correct at time of creation - February 2024.

VIVID

VIVID

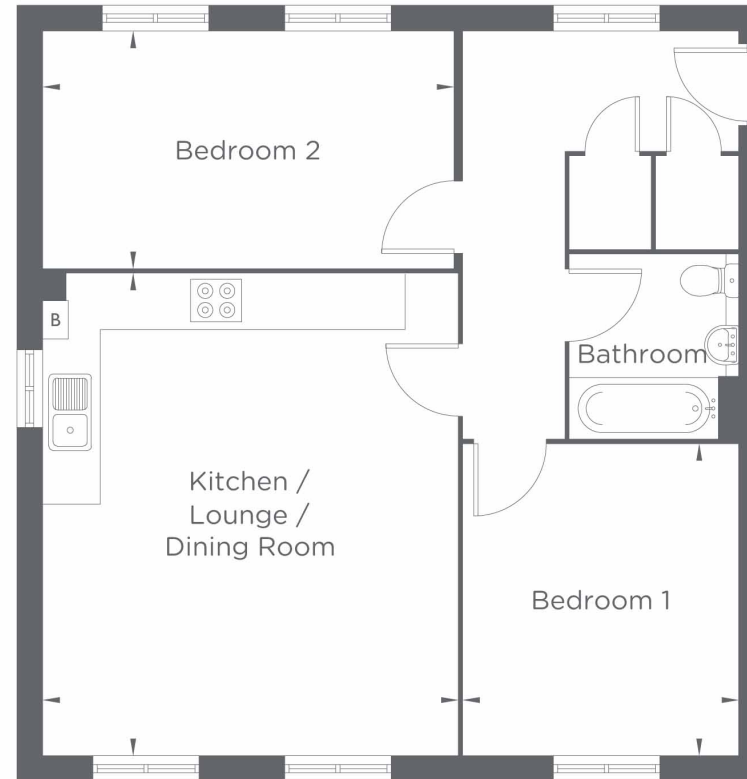


# Hounscome Fields

**Plot 714**  
2 BEDROOM APARTMENT

## GROUND FLOOR

Kitchen / Lounge / Dining Room	5.67m x 4.88m (18'-7" x 16'-0")
Bedroom 1	3.66m x 3.24m (12'-0" x 10'-8")
Bedroom 2	4.83m x 2.79m (15'-10" x 9'-2")



\*B = Boiler

## GROUND FLOOR

Please note floorplans are not to scale and are indicative only, total areas are provided as gross internal areas and are subject to variance and these plans do not act as part of a legally binding contract, warranty or guarantee. These plans may not be to scale and dimensions may vary during the build programme. It is common for fixtures and fittings to change during the build programme, for example boilers. Location of windows, doors, kitchen units and appliances may differ. Doors may swing in to the opposite direction to that shown on selected houses. Dimensions, which are taken from the indicated points of measurement are for guidance only and are not intended to be used to calculate the space needed for specific pieces of furniture. If your home is set within a terrace row, the position of the windows may vary from those shown on this plan. The property may also be a handed (mirrored) version of the layout shown here. We advise that you do not order any furniture based on these indicative plans, please wait until you can measure up fully, inside the property. Please speak to a member of our sales team about when you can gain access to take measurements. We will not be responsible for costs incurred due to ordering incorrect furniture. VIVID Housing Limited is registered in England and Wales as a registered society under the Co-operative and Community Benefit Societies Act 2014 under number 7544 with exempt charity status and as a registered provider of social housing with the Homes and Communities Agency under number 4850. Our registered office is at Peninsular House, Wharf Road, Portsmouth, Hampshire, PO2 8HB. All information correct at time of creation - August 2024.

**VIVID**

VIVID

# Hounsme Fields

Plot 716  
1 BEDROOM APARTMENT

## GROUND FLOOR

Kitchen / Lounge / Dining Room	6.12m x 3.41m (20'-1" x 11'-2")
Bedroom	4.78m x 2.82m (15'-8" x 9'-3")



\*B = Boiler

## GROUND FLOOR

Please note floorplans are not to scale and are indicative only. Total areas are provided as gross internal areas and are subject to variance and those plans do not act as part of a legally binding contract, warranty or guarantee. These plans may not fit to scale and dimensions may vary during the build programme. It is common for fixtures and fittings to change during the build programme, for example boilers. Location of windows, doors, kitchen units and appliances may differ. Doors may swing in to the opposite direction to that shown on selected houses. Dimensions, which are taken from the indicated points of measurement are for guidance only and are not intended to be used to calculate the space needed for specific pieces of furniture. If your home is set within a terrace row, the position of the windows may vary from those shown on the plan. The property may also be a fixed (non-rotatable) version of the layout shown here. We advise that you do not order any furniture based on these indicative plans; please wait until you can measure up fully inside the property. Please speak to a member of our sales team about when you can gain access to take measurements. We will not be responsible for costs incurred due to ordering incorrect furniture. VIVID Housing Limited is registered in England and Wales as a registered society under the Co-operative and Community Benefit Societies Act 2014 under number 7564 with a exempt charity status and as a registered provider of social housing with the Homes and Communities Agency under number 4850. Our registered office is at Pirinsular House, Wharf Road, Portsmouth, Hampshire, PO2 8HB. All information correct at time of creation - August 2024.

VIVID

VIVID



# Hounsome Fields

Plot 717  
2 BEDROOM APARTMENT

## FIRST FLOOR

Kitchen / Lounge / Dining Room	5.67m x 4.88m (18'-7" x 16'-0")
Bedroom 1	3.66m x 3.24m (12'-0" x 10'-8")
Bedroom 2	4.83m x 2.79m (15'-10" x 9'-2")



\*B = Boiler

## FIRST FLOOR

Please note floorplans are not to scale and are indicative only. Total areas are provided as gross internal areas and are subject to variance and these plans do not act as part of a legally binding contract, warranty or guarantee. These plans may not fit to scale and dimensions may vary during the build programme. It is common for fixtures and fittings to change during the build programme, for example boilers. Location of windows, doors, kitchen units and appliances may differ. Doors may swing in to the opposite direction to that shown on selected houses. Dimensions which are taken from the indicated points of measurement are for guidance only and are not intended to be used to calculate the space needed for specific pieces of furniture. If your home is set within a terrace row, the position of the windows may vary from those shown on the plan. The property may also be a flatbed (non-plot) version of the layout shown here. We advise that you do not order any furniture based on these indicative plans. Please visit until you can measure up fully inside the property. Please speak to a member of our sales team about when you can gain access to take measurements. We will not be responsible for costs incurred due to ordering incorrect furniture. VIVID Housing Limited is registered in England and Wales as a registered society under the Co-operative and Community Benefit Societies Act 2014 under number 7564 with a exempt charity status and as a registered provider of social housing with the Homes and Communities Agency under number 4850. Our registered office is at Peninsula House, Wharf Road, Portsmouth, Hampshire, PO2 8HB. All information correct at time of creation - August 2024.

VIVID

VIVID

# Hounsome Fields

Plot 718  
2 BEDROOM APARTMENT

## FIRST FLOOR

Kitchen / Lounge / Dining Room	5.67m x 4.88m (18'-7" x 16'-0")
Bedroom 1	3.66m x 3.24m (12'-0" x 10'-8")
Bedroom 2	4.88m x 2.79m (16'-0" x 9'-2")



FIRST FLOOR

Please note floorplans are not to scale and are indicative only. Total areas are provided as gross internal areas and are subject to variance and these plans do not act as part of a legally-binding contract, warranty or guarantee. These plans may not fit to scale and dimensions may vary during the build programme. It is common for fixtures and fittings to change during the build programme, for example boilers. Location of windows, doors, kitchen units and appliances may differ. Doors may swing in to the opposite direction to that shown on selected houses. Dimensions which are taken from the indicated points of measurement are for guidance only and are not intended to be used to calculate the space needed for specific pieces of furniture. If your home is set within a terrace row, the position of the windows may vary from those shown on the plan. The property may also be a flatbed (non-orthodox) version of the layout shown here. We advise that you do not order any furniture based on these indicative plans, please wait until you can measure up fully inside the property. Please speak to a member of our sales team about when you can gain access to take measurements. We will not be responsible for costs incurred due to ordering incorrect furniture. VIVID Housing Limited is registered in England and Wales as a registered society under the Co-operative and Community Benefit Societies Act 2014 under number 7564 with a exempt charity status and as a registered provider of social housing with the Homes and Communities Agency under number 4850. Our registered office is at Peninsula House, Wharf Road, Portsmouth, Hampshire, PO2 8HB. All information correct at time of creation - August 2024.

VIVID

VIVID



# Hounsome Fields

**Plot 721**  
2 BEDROOM APARTMENT

## SECOND FLOOR

Kitchen / Lounge / Dining Room	5.67m x 4.88m (18'-7" x 16'-0")
Bedroom 1	3.66m x 3.24m (12'-0" x 10'-8")
Bedroom 2	4.88m x 2.79m (16'-0" x 9'-2")



SECOND FLOOR

\*B = Boiler

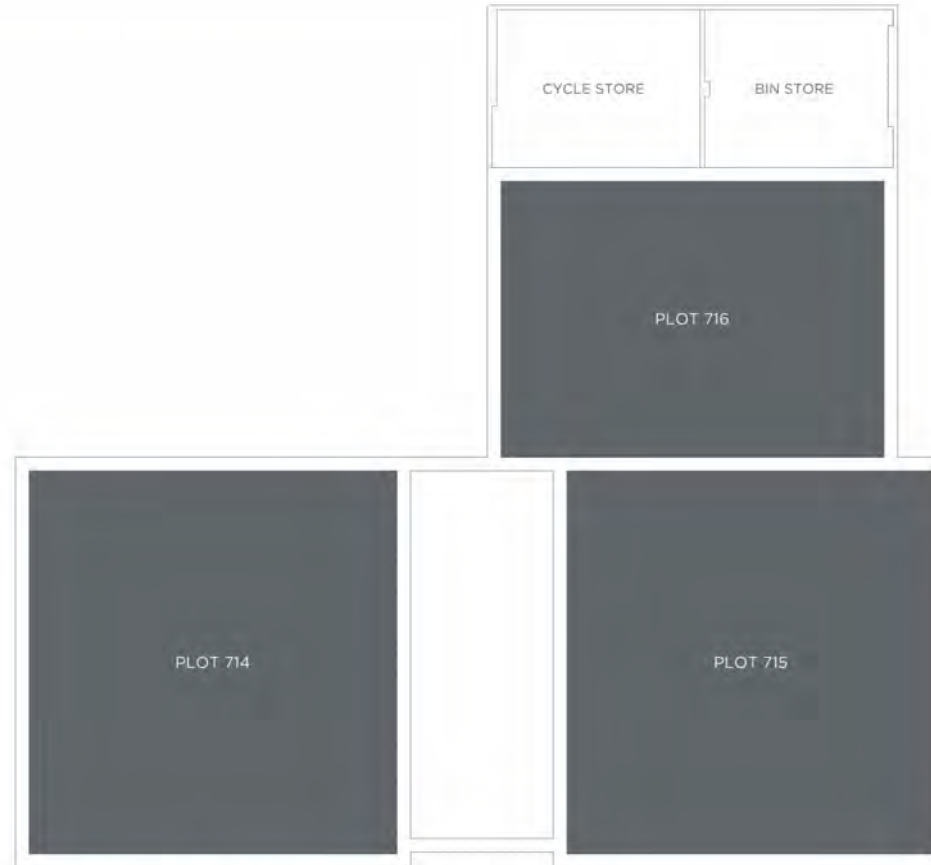
Please note floorplans are not to scale and are indicative only. Total areas are provided as gross internal areas and are subject to variance and these plans do not act as part of a legally binding contract, warranty or guarantee. These plans may not fit to scale and dimensions may vary during the build programme. It is common for fixtures and fittings to change during the build programme, for example boilers. Location of windows, doors, kitchen units and appliances may differ. Doors may swing in to the opposite direction to that shown on selected houses. Dimensions which are taken from the indicated points of measurement are for guidance only and are not intended to be used to calculate the space needed for specific pieces of furniture. If your home is set within a terrace row, the position of the windows may vary from those shown on the plan. The property may also be a flatbed (non-orthogonal) version of the layout shown here. We advise that you do not order any furniture based on these indicative plans, please wait until you can measure up fully inside the property. Please speak to a member of our sales team about when you can gain access to take measurements. We will not be responsible for costs incurred due to ordering incorrect furniture. VIVID Housing Limited is registered in England and Wales as a registered society under the Co-operative and Community Benefit Societies Act 2014 under number 7564 with a exempt charity status and as a registered provider of social housing with the Homes and Communities Agency under number 4850. Our registered office is at Peninsula House, Wharf Road, Portsmouth, Hampshire, PO2 8HB. All information correct at time of creation - August 2024.

**VIVID**

VIVID

# Hounsome Fields

Plots 714, 715, 716



GROUND FLOOR

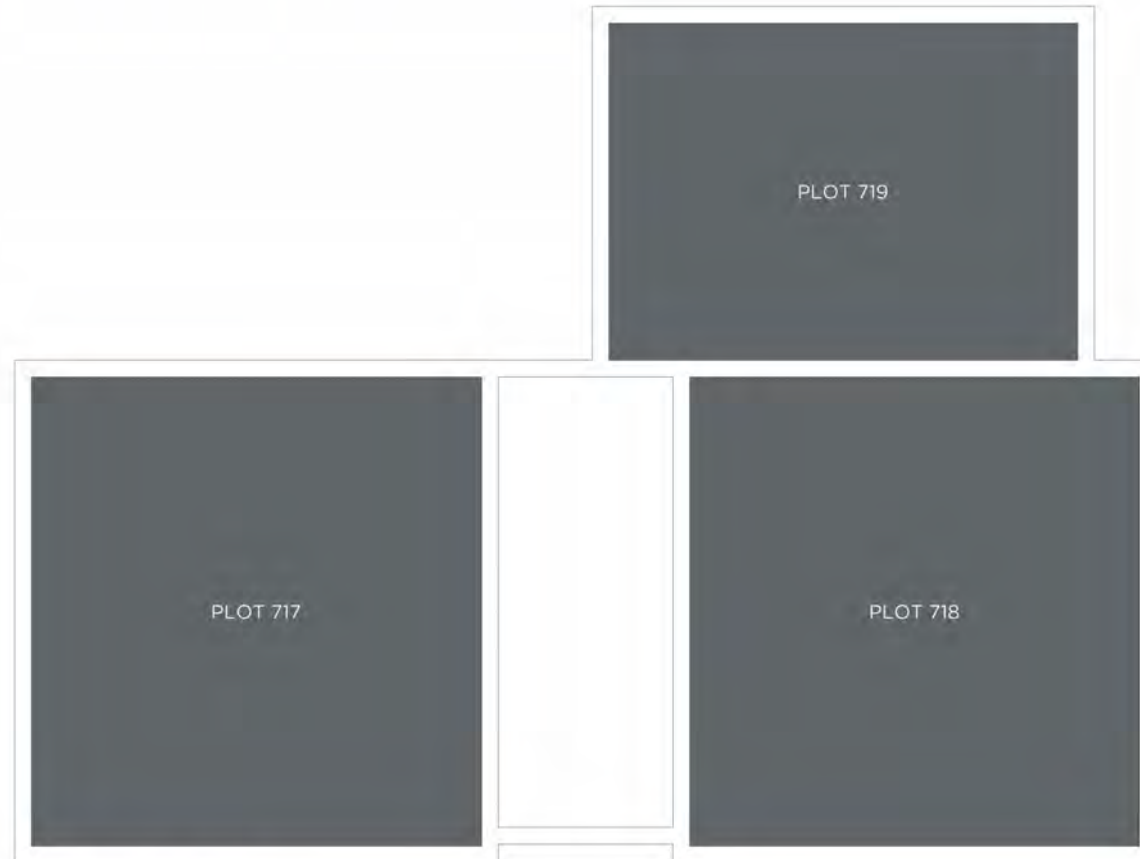
Please note floorplans are not to scale and are indicative only. Total areas are provided as gross internal areas and are subject to variance and these plans do not act as part of a legally binding contract, warranty or guarantee. These plans may not be to scale and dimensions may vary during the build programme. It is common for fixtures and fittings to change during the build programme, for example boilers. Location of windows, doors, kitchen units and appliances may differ. Doors may swing in to the opposite direction to that shown on selected houses. Dimensions, which are taken from the indicated points of measurement are for guidance only and are not intended to be used to calculate the space needed for specific pieces of furniture. If your home is set within a terrace row, the position of the windows may vary from those shown on the plan. The property may also be a handed (mirrored) version of the layout shown here. We advise that you do not order any furniture based on these indicative plans. Please wait until you can measure up fully, inside the property. Please speak to a member of our sales team about when you can gain access to take measurements. We will not be responsible for costs incurred due to ordering incorrect furniture. Vivid Housing Limited is registered in England and Wales as a registered society under the Co-operative and Community Benefit Societies Act 2014 under number 7514 with exempt charity status and as a registered provider of social housing with the Homes and Communities Agency under number 4850. Our registered office is at Peninsular House, Wharf Road, Portsmouth, Hampshire, PO2 8HB. All information correct at time of creation - August 2024.

VIVID

VIVID

# Hounsosome Fields

Plots 717, 718, 719



FIRST FLOOR

Please note floorplans are not to scale and are indicative only. Total areas are provided as gross internal areas and are subject to variance and these plans do not act as part of a legally binding contract, warranty or guarantee. These plans may not be to scale and dimensions may vary during the build programme. It is common for fixtures and fittings to change during the build programme, for example boilers. Location of windows, doors, kitchen units and appliances may differ. Doors may swing in to the opposite direction to that shown on selected houses. Dimensions, which are taken from the indicated points of measurement are for guidance only and are not intended to be used to calculate the space needed for specific pieces of furniture. If your home is set within a terrace row, the position of the windows may vary from those shown on this plan. The property may also be a handed (mirrored) version of the layout shown here. We advise that you do not order any furniture based on these indicative plans. Please wait until you can measure up fully, inside the property. Please speak to a member of our sales team about when you can gain access to take measurements. We will not be responsible for costs incurred due to ordering incorrect furniture. VIVID Housing Limited is registered in England and Wales as a registered society under the Co-operative and Community Benefit Societies Act 2014 under number 7514 with exempt charity status and as a registered provider of social housing with the Homes and Communities Agency under number 4850. Our registered office is at Peninsular House, Wharf Road, Portsmouth, Hampshire, PO2 8HB. All information correct at time of creation - August 2024.

VIVID

VIVID



# Hounsome Fields

Plots 720, 721, 722



## SECOND FLOOR

Please note floorplans are not to scale and are indicative only. Total areas are provided as gross internal areas and are subject to variance and these plans do not act as part of a legally binding contract, warranty or guarantee. These plans may not be to scale and dimensions may vary during the build programme. It is common for fixtures and fittings to change during the build programme, for example boilers. Location of windows, doors, kitchen units and appliances may differ. Doors may swing in to the opposite direction to that shown on selected houses. Dimensions, which are taken from the indicated points of measurement are for guidance only and are not intended to be used to calculate the space needed for specific pieces of furniture. If your home is set within a terrace row, the position of the windows may vary from those shown on this plan. The property may also be a handed (mirrored) version of the layout shown here. We advise that you do not order any furniture based on these indicative plans. Please wait until you can measure up fully, inside the property. Please speak to a member of our sales team about when you can gain access to take measurements. We will not be responsible for costs incurred due to ordering incorrect furniture. VIVID Housing Limited is registered in England and Wales as a registered society under the Co-operative and Community Benefit Societies Act 2014 under number 7514 with exempt charity status and as a registered provider of social housing with the Homes and Communities Agency under number 4850. Our registered office is at Peninsular House, Wharf Road, Portsmouth, Hampshire, PO2 8HB. All information correct at time of creation - August 2024.

VIVID

VIVID

# Hounsome Fields

Plots 714 to 722



FRONT ELEVATION

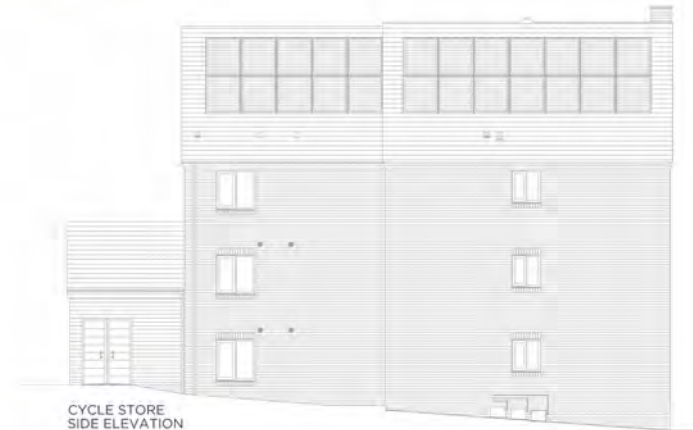


REAR ELEVATION



SIDE ELEVATION

BIN STORE



CYCLE STORE  
SIDE ELEVATION

Please note floorplans are not to scale and are indicative only. Total areas are provided as gross internal areas and are subject to variance and these plans do not act as part of a legally binding contract, warranty or guarantee. These plans may not be to scale and dimensions may vary during the build programme. It is common for fixtures and fittings to change during the build programme, for example boilers. Location of windows, doors, kitchen units and appliances may differ. Doors may swing in to the opposite direction to that shown on selected houses. Dimensions, which are taken from the indicated points of measurement are for guidance only and are not intended to be used to calculate the space needed for specific pieces of furniture. If your home is set within a terrace row, the position of the windows may vary from those shown on this plan. The property may also be a handed (mirrored) version of the layout shown here. We advise that you do not order any furniture based on these indicative plans, please wait until you can measure up fully, inside the property. Please speak to a member of our sales team about when you can gain access to take measurements. We will not be responsible for costs incurred due to ordering incorrect furniture. VIVID Housing Limited is registered in England and Wales as a registered society under the Co-operative and Community Benefit Societies Act 2014 under number 7544 with exempt charity status and as a registered provider of social housing with the Homes and Communities Agency under number 4850. Our registered office is at Peninsular House, Wharf Road, Portsmouth, Hampshire, PO2 8HB. All information correct at time of creation - August 2024.

VIVID

VIVID

# Hounsosome Fields



388-396



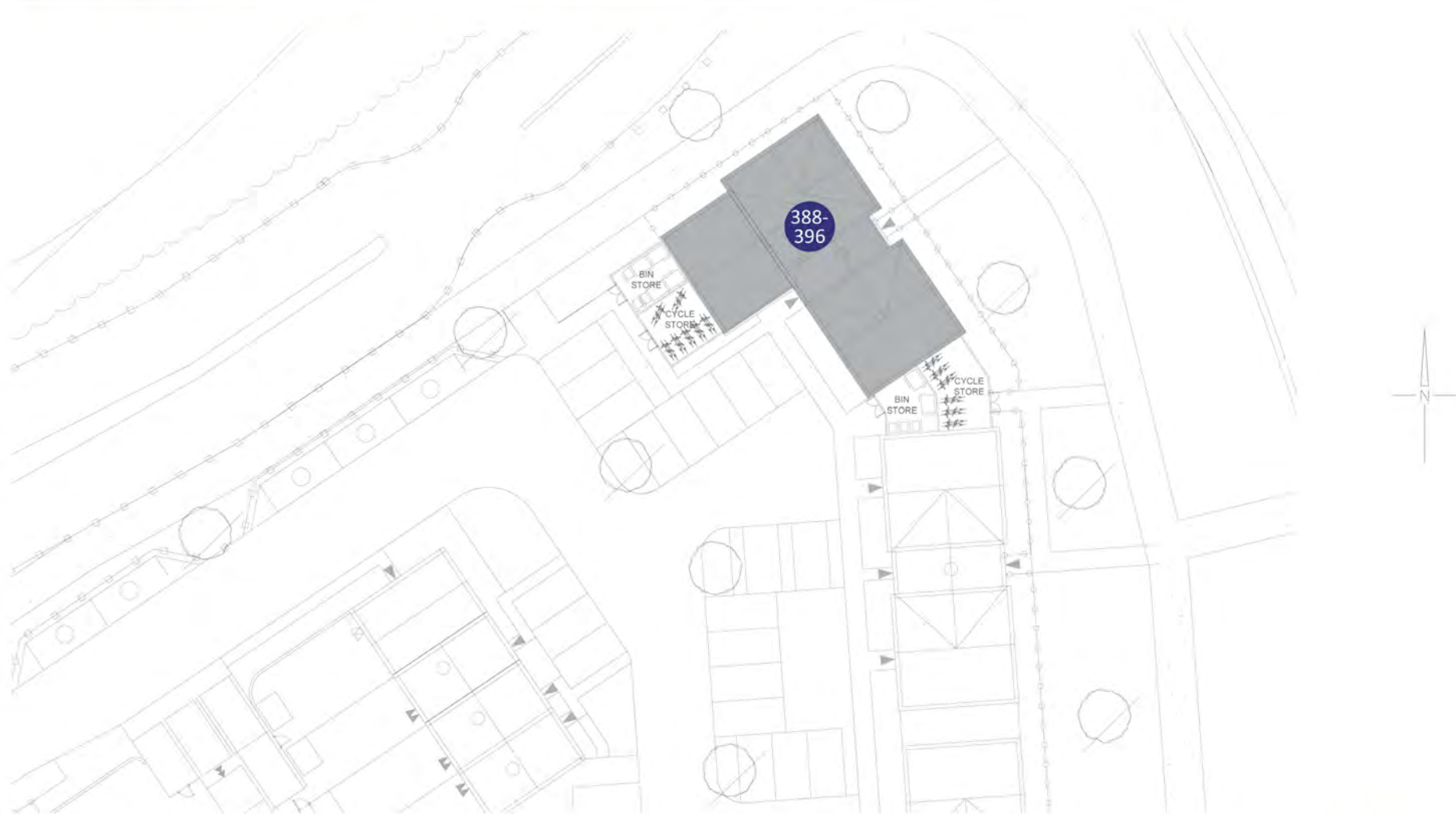
Please note floorplans are not to scale and are indicative only, total areas are provided as gross internal areas and are subject to variance and these plans do not act as part of a legally binding contract, warranty or guarantee. These plans may not be to scale and dimensions may vary during the build programme. It is common for fixtures and fittings to change during the build programme, for example boilers. Location of windows, doors, kitchen units and appliances may differ. Doors may swing in to the opposite direction to that shown on selected houses. Dimensions, which are taken from the indicated points of measurement are for guidance only and are not intended to be used to calculate the space needed for specific pieces of furniture. If your home is set within a terrace row, the position of the windows may vary from those shown on this plan. The property may also be a handed (mirrored) version of the layout shown here. We advise that you do not order any furniture based on these indicative plans, please wait until you can measure up fully, inside the property. Please speak to a member of our sales team about when you can gain access to take measurements. We will not be responsible for costs incurred due to ordering incorrect furniture. VIVID Housing Limited is registered in England and Wales as a registered society under the Co-operative and Community Benefit Societies Act 2014 under number 7544 with exempt charity status and as a registered provider of social housing with the Homes and Communities Agency under number 4850. Our registered office is at Peninsular House, Wharf Road, Portsmouth, Hampshire, PO2 8HB. All information correct at time of creation - February 2024.

VIVID

VIVID



# Hounsosome Fields



Please note floorplans are not to scale and are indicative only, total areas are provided as gross internal areas and are subject to variance and these plans do not act as part of a legally binding contract, warranty or guarantee. These plans may not be to scale and dimensions may vary during the build programme. It is common for fixtures and fittings to change during the build programme, for example boilers. Location of windows, doors, kitchen units and appliances may differ. Doors may swing in to the opposite direction to that shown on selected houses. Dimensions, which are taken from the indicated points of measurement are for guidance only and are not intended to be used to calculate the space needed for specific pieces of furniture. If your home is set within a terrace row, the position of the windows may vary from those shown on this plan. The property may also be a handed (mirrored) version of the layout shown here. We advise that you do not order any furniture based on these indicative plans, please wait until you can measure up fully, inside the property. Please speak to a member of our sales team about when you can gain access to take measurements. We will not be responsible for costs incurred due to ordering incorrect furniture. VIVID Housing Limited is registered in England and Wales as a registered society under the Co-operative and Community Benefit Societies Act 2014 under number 7544 with exempt charity status and as a registered provider of social housing with the Homes and Communities Agency under number 4850. Our registered office is at Peninsular House, Wharf Road, Portsmouth, Hampshire, PO2 8HB. All information correct at time of creation - February 2024.

VIVID

VIVID

# Hounsome Fields



Please note floorplans are not to scale and are indicative only; total areas are provided as gross internal areas and are subject to variance and those plans do not act as part of a legally binding contract, warranty or guarantee. Measurements may not be to standard dimensions only used during the build programme. It is suggested that buyers and tenants to arrange during the build programme for a surveyor to check the accuracy of the plans. Dimensions shown on the plans are for guidance only and are not intended to be used to calculate the space needed for specific pieces of furniture. If your home is set within a leasehold, the position of the windows may vary from those shown on this plan. The property may also be a handed (reversed) version of the layout shown here. We advise that you do not order any furniture based on these indicative dimensions. You can measure up any inside the property, please speak to a member of our sales team about when you can gain access to take measurements. We will not be responsible for losses incurred due to ordering incorrect furniture. VIVID Housing Limited is registered in England and Wales as a registered society under the Co-operative and Community Benefit Societies Act 2014 (order number 7544) with exempt charity status and is a registered provider of social housing with the Homes and Communities Agency under number 3866. Our registered office is at Paradise House, White Road, Pottersville, Newcastle, PO2 9HD. All information correct at time of issue - August 2024.

VIVID

VIVID

# Hounsome Fields



Please note floorplans are not to scale and are indicative only; total areas are provided as gross internal areas and are subject to variance and these plans do not act as part of a legally binding contract, warranty or guarantee. These plans may not be to scale and dimensions may vary during the build programme. It is common for fixtures and fittings to change during the build programme, for example boilers. Location of windows, doors, kitchen units and appliances may differ. Doors may swing in to the opposite direction to that shown on selected houses. Dimensions, which are taken from the indicated points of measurement are for guidance only and are not intended to be used to calculate the spaces needed for specific pieces of furniture. If your home is set within a terrace row, the position of the windows may vary from those shown on this plan. The property may also be a handed (mirrored) version of the layout shown here. We advise that you do not order any furniture based on these indicative plans, please wait until you can measure up fully, inside the property. Please speak to a member of our sales team about when you can gain access to take measurements. We will not be responsible for costs incurred due to ordering incorrect furniture. Vivid Housing Limited is registered in England and Wales as a registered society under the Co-operative and Community Benefit Societies Act 2014 under number 7544 with exempt charity status and as a registered provider of social housing with the Homes and Communities Agency under number 4850. Our registered office is at Peninsular House, Wharf Road, Portsmouth, Hampshire, PO2 8HB. All information correct at time of creation - August 2024.

VIVID

VIVID





# THE SPECIFICATION

## Kitchen

- Kitchen Units - Kubix Symphony Cobble Grey
- Worktop - Kubix Symphony Alaska 40mm
- Handles - Kubix Symphony Chrome Arched D Handle Style HPK639
- An oven and hob will also be provided
- Kitchen flooring will vary depending on layout. If the kitchen is a separate room then it will be decorated with Vinyl (Camargue 538). If it is a kitchen/diner layout then the flooring will be Karndean (Riven Grey Slate)

## Internals

- Carpet in the living area is from the Apollo Plus range and is coloured 'Smokestack'

## Bathrooms

- Tiles are from the Porcenonosa range and are 'Park Gris'
- The flooring is Comfytex Camargue 528 vinyl

## Other

- Gas Combi Boiler
- Current plots 396, 714, 716, 717, 718, 721 feature one parking spaces<sup>^</sup> (Right to Use).

<sup>^</sup>parking space for plot 396 does not include EV charging points. Plots 714, 716, 717, 718, 721 do include EV charging points. Please speak with your Sales officer for more information.

Images shown are indicative and do not represent the final specification. Please note that the Specification is subject to change and VIVID reserves the right to change items in the specification dependent on availability, at any moment, and without prior notice during the build completion.



## SERVICES & ADDITIONAL INFO

- Utilities - Mains Gas, Electric, Water (Metered) & Waste Water
- Broadband - BT Open Reach
- Broadband Coverage Checker - <https://checker.ofcom.org.uk/en-gb/broadband-coverage>
- Mobile Coverage Checker - <https://checker.ofcom.org.uk/en-gb/mobile-coverage>
- Solar Panels - Current plots 714, 716, 717, 718 & 721 feature solar panelling
- Construction method - Traditional
- Planning - View the local website for more information <https://www.basingstoke.gov.uk/>

Please Note: Newbuild property specification and additional info is not always available, also newbuild property addresses may not be active immediately with all service providers. Please contact the team if you have additional queries.

SO HOW CAN YOU ENJOY  
ALL THIS FOR JUST £51,250?\*

## ONLY WITH VIVID SHARED OWNERSHIP

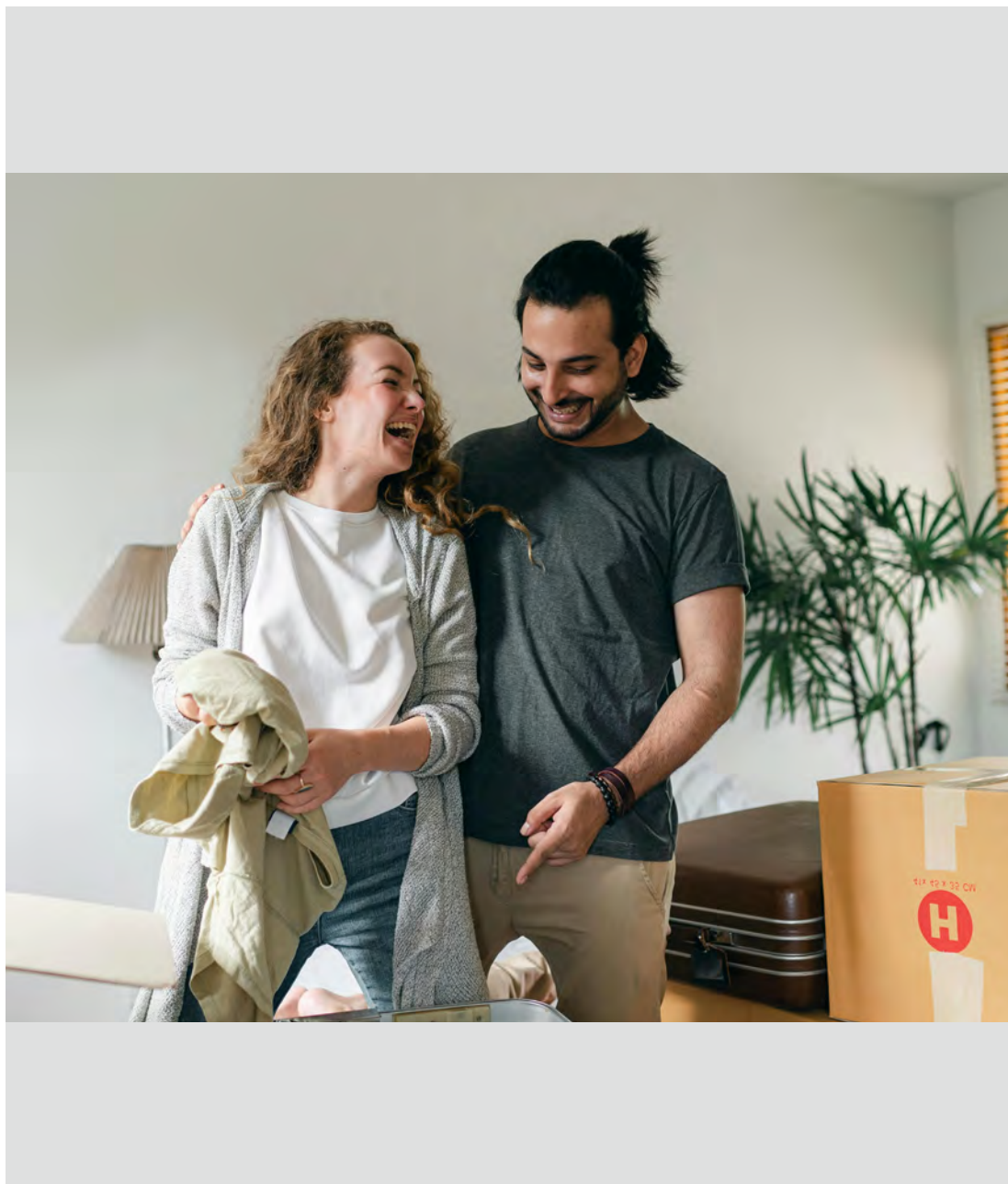
Shared ownership lets you buy a share of your new home. You can start at just 25% with a 5% deposit. You pay rent on the rest. If you buy a 25% share on one of these homes you can expect the rent to be around £352.34 per month\*. In the future, as your financial situation changes, you can buy greater shares if you want to. This is called staircasing. As your share goes up, your rent comes down. If you'd like to get a better understanding of how much buying a brand new home at Hounsome Fields would cost you.

Visit [www.yourvividhome.co.uk](http://www.yourvividhome.co.uk) to see all  
of our homes on offer with Shared Ownership!

\*Prices are based on buying a 25% share in a 1 bedroom apartment with a FMV of £205,000, shares start from £51,250 with a monthly rent of example of £352.24 (Based on unsold equity at 2.75% of value). Terms and conditions apply.







## WHO WE ARE

---

We're a customer-focused provider of affordable homes and the 4th largest builder amongst UK housing associations. We have an ambitious development programme, together with providing vital support services to our communities.

## BUYING MORE SHARES

---

Shared Ownership enables you to buy more shares in your home over time, from an additional 10% to outright purchase (in most cases). We call this staircasing.

## AFTER YOU MOVE IN

---

You can have confidence buying a VIVID home as our team are here to help you if you have any unforeseen issues or defects in your new home.

---

NOW IT'S  
TIME TO APPLY

[yourvividhome.co.uk/developments/  
hounsoume-fields](https://yourvividhome.co.uk/developments/hounsoume-fields)

---

VIVID

VIVID Housing Limited is registered in England and Wales as a registered society under the Co-operative and Community Benefit Societies Act 2014 under number 7544 with exempt charity status and as a registered provider of social housing with the Homes and Communities Agency under number 4850. Our registered office is at Peninsular House, Wharf Road, Portsmouth, Hampshire, PO2 8HB. All information correct at time of creation - November 2024.



# VIVID @ Hounsome Fields

Basingstoke, RG23 7RJ/RU

Shared Ownership homes

Property type	Plot	Address	100% value*	Eg: FROM minimum 25% share (which you must raise mortgage & deposit for)	Eg: Initial monthly rent pcm FROM (based on 75% share you don't own)	Estimated monthly service charge	Projected handover date*	Lease Length	Council Tax Band	Important Information
1 Bedroom Second Floor Apartment	396	Flat 8, Darcy Court, 1 Kympton Place, Basingstoke, Hampshire, RG23 7RJ	£210,000	£52,500	£360.94	£77.44	January 2025	990 Years	TBC	<a href="#">Energy Info</a> <a href="#">Key Info</a>
2 Bedroom Ground Floor Apartment	714	Flat 1, Mansfield Park, 84 Lulworth Way, Basingstoke, Hampshire, RG23 7RU	£250,000	£62,500	£429.69	£92.40	April 2025	990 Years	TBC	<a href="#">Energy Info</a> <a href="#">Key Info</a>
1 Bedroom Ground Floor Apartment	716	Flat 2, Mansfield Park, 84 Lulworth Way, Basingstoke, Hampshire, RG23 7RU	£205,000	£51,250	£352.34	£92.14	April 2025	990 Years	TBC	<a href="#">Energy Info</a> <a href="#">Key Info</a>
2 Bedroom First Floor Apartment	717	Flat 4, Mansfield Park, 84 Lulworth Way, Basingstoke, Hampshire, RG23 7RU	£250,000	£62,500	£429.69	£92.40	April 2025	990 Years	TBC	<a href="#">Energy Info</a> <a href="#">Key Info</a>





2 Bedroom First Floor Apartment	718	Flat 6, Mansfield Park, 84 Lulworth Way, Basingstoke, Hampshire, RG23 7RU	£250,000	£62,500	£429.69	£92.40	April 2025	990 Years	TBC	<a href="#">Energy Info</a> <a href="#">Key Info</a>
2 Bedroom Second Floor Apartment	721	Flat 9, Mansfield Park, 84 Lulworth Way, Basingstoke, Hampshire, RG23 7RU	£250,000	£62,500	£429.69	£92.40	April 2025	990 Years	TBC	<a href="#">Energy Info</a> <a href="#">Key Info</a>

**Please note the following:**

- Eligibility conditions apply.
- Initial rent is calculated at 2.75%
- Currently only those with a live/work/family connection to the Basingstoke & Deane Borough Council area may be considered
- We may be required to discuss your application with the Local Authority.
- The 25% example above shows the **minimum** share available. Applicants will be means tested to confirm the share they purchase and are required to purchase the maximum affordable % .
- The service charge figure in the first year is based on assumptions and VIVID’s experience of managing similar homes. This figure will be reviewed annually and may vary from the original estimate. End of year accounts are published in September, showing the actual expenditure and adjustments made for any shortfall or surplus and if we get the information earlier, we’ll review and update you during the conveyancing process too.
- Successful applicants will have a maximum of 28 days \*\* to exchange contracts following VIVID’s solicitor issuing the contract pack. You must then complete on the purchase within a maximum 5 days of either exchange of contracts or following handover from the developer.

\*Prices & projected handover dates are for guidance only and are subject to change. Our newbuild Shared Ownership homes are valued by a RICS (Royal Institute Chartered Surveyor) surveyor which confirms the full market value for 3 months.

Every 3 months we will have the homes revalued, to make sure they're in line with the current market. This means the price is non-negotiable. It also means the value of the homes could go up or down, so are subject to change.



\*\* or if all legal paperwork and the mortgage offer is in you must complete the sale.