

THE

W
U
I

HOUNSLOW
TW3

THE

WELCOME TO
HOUNSLOW'S
NEWEST NEIGHBOUR



NEW BEGINNINGS

**INTRODUCING THE HUE: A FRESH TAKE ON
MODERN SHARED OWNERSHIP IN HOUNSLOW.**

**DISCOVER THESE THOUGHTFULLY CRAFTED
1 & 2 BEDROOM APARTMENTS AND SPACIOUS
2 BEDROOM DUPLEXES.**

ONCE A SMALL MARKET TOWN, NOW A CULTURAL HUB

Hounslow boasts a rich history dating back to 1865, becoming a prominent coaching stop on the Great West Road. This once rural settlement became a key coaching town. In the 20th century, it witnessed urban expansion and played a vital role in both World Wars. The town continues to evolve, blending its historical roots with modern urban life.

Discover an abundance of activities right on your doorstep. Hounslow High Street beckons with its diverse range of shops, entertainment hubs, and charming eateries, all just moments away. Explore a vibrant tapestry of experiences in this dynamic locale.



1865



2024

RICH IN HISTORY &
STRONG IN COMMUNITY,
HOUNSLOW BEATS
TO THE RHYTHM
OF ITS OWN DRUM

EX

P



LORE

WEST LONDON LIVING

RETAIL & LEISURE

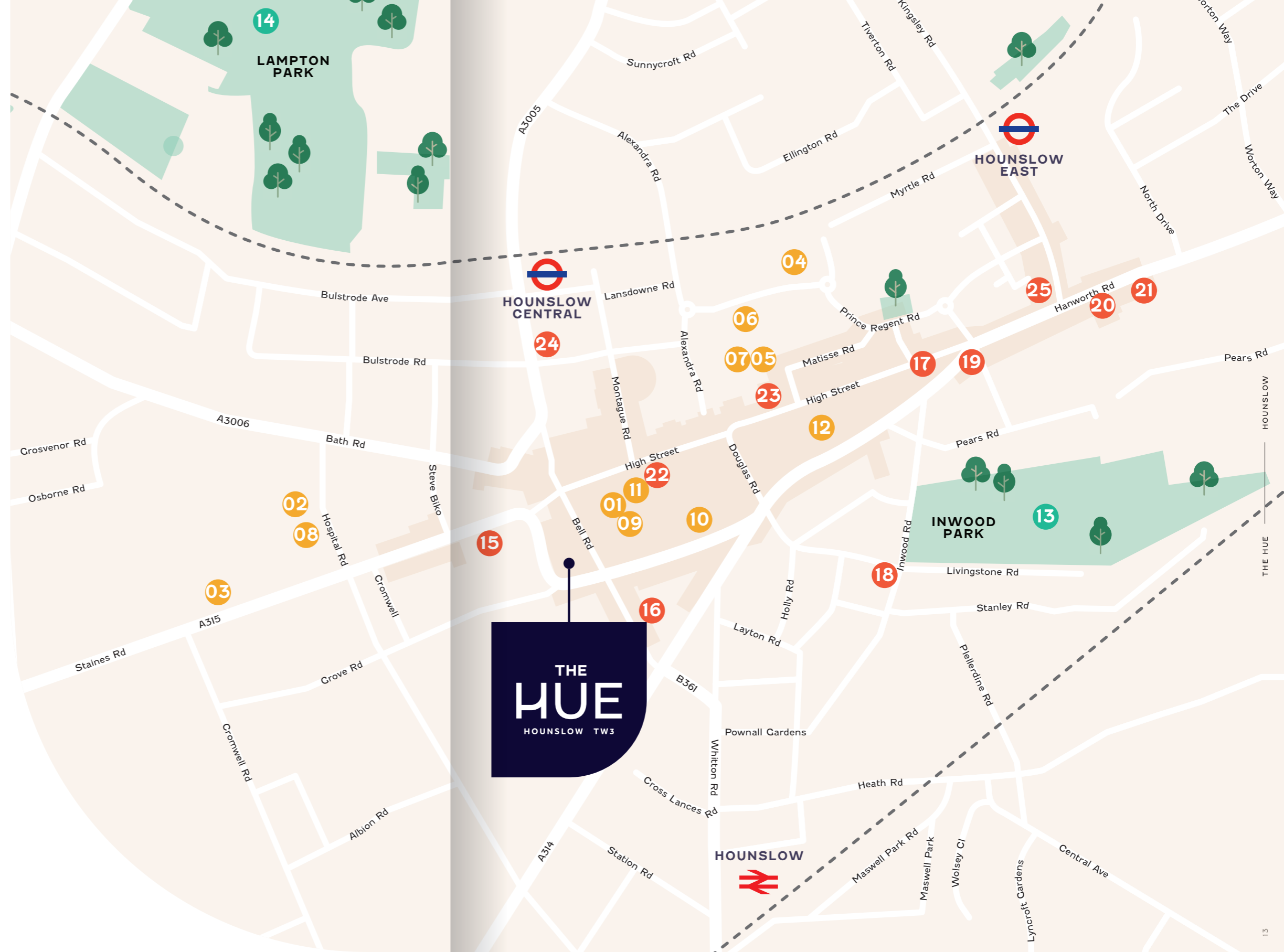
01. TREATY SHOPPING CENTRE
02. ALDI
03. ASIAN FOOD CENTRE
04. ASDA SUPERSTORE
05. FLIP OUT HOUNSLOW
06. HANG CLIMBING CENTRE
07. CINEWORLD
08. LIDL
09. H&M
10. JD SPORTS
11. NEXT
12. PRIMARK

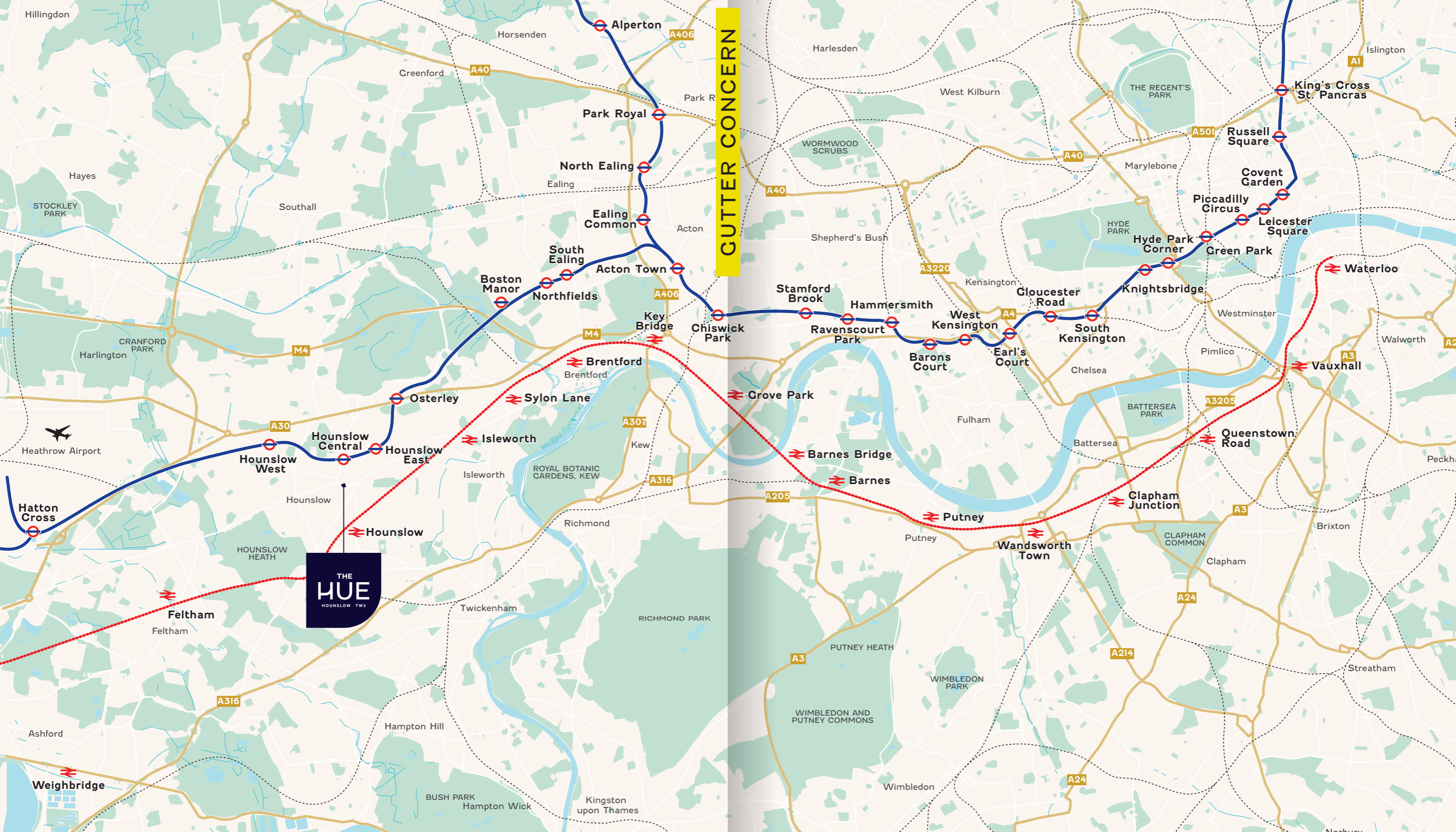
GREEN SPACES

13. INWOOD PARK
14. LAMPTON PARK

FOOD AND DRINK

15. IL BEBO'S
16. HONEY MOON
17. SHREE KRISHNA VADA PAV
18. THE GEORGE
19. TASTE OF LAHORE
20. NANDO'S
21. BALLUCCI
22. MARKET PLACE
23. KOKORO
24. CAFFÈ VENEZIA
25. KARAK CHAI





GUTTER CONCERN

THE HUE
HOUSLOW TW3

Hillingdon
Hayes
STOCKLEY PARK
Southall
Horsenden
Greenford
Park Royal
North Ealing
Ealing
Acton
Boston Manor
Northfields
Acton Town
Key Bridge
Chiswick Park
Stamford Brook
Ravenscourt Park
Hammersmith
West Kensington
Earl's Court
South Kensington
Gloucester Road
Knightsbridge
Hyde Park Corner
Green Park
Piccadilly Circus
Leicester Square
Covent Garden
Russell Square
King's Cross St. Pancras
Islington
A1
HOUNSLOW HEATH
HOUNSLOW
HOUNSLOW WEST
HOUNSLOW CENTRAL
HOUNSLOW EAST
Osterley
Feltham
Weighbridge
Ashford
Hampton Hill
Hampton Wick
BUSH PARK
Kingston upon Thames
RICHMOND PARK
ROYAL BOTANIC GARDENS, KEW
Isleworth
Brentford
Key Bridge
M4
A307
A316
A205
A3
PUTNEY HEATH
WIMBLEDON PARK
WIMBLEDON AND PUTNEY COMMONS
Wimbledon
Putney
Putney Heath
Wandsworth Town
Clapham Junction
Clapham
CLAPHAM COMMON
A24
A214
Battersea
Battersea Park
A3205
Queenstown Road
Vauxhall
Waterloo
Westminster
Pimlico
Chelsea
Fulham
Barnes
Barnes Bridge
Grove Park
A205
A3
Brixton
Streatham
Walworth
A2
Peckham
A3
Vauxhall
Waterloo

DIS
C



OVER
ER

TAKE YOUR TASTE BUDS ON A TRIP AROUND THE WORLD

Hounslow is big on flavour, with something for everyone in this diverse foodie scene. Feast your eyes on some of our top picks.

DINE

IL BEBO'S

Indulge in an authentic Italian experience at Il Bebo's, where the rich flavours of Mediterranean cuisine come to life in a lavish setting. Explore a menu that seamlessly blends timeless classics with contemporary delights, all accompanied by a carefully curated selection of premium wines, promising a truly exquisite dining affair.

SIP

KARAK CHAI

Every sip is a journey at Karak Chaii, where you can indulge in a symphony of flavours. Renowned for its exceptional chai smoothies, experience a delightful blend of the Middle East.

BAKE

BALLUCCI

For those with a sweet tooth, this is the place to go. Cakes, pastries and other treats await temptingly on display. Pair your choice with a meticulously brewed coffee. Whether you are enjoying a tranquil start to the morning or an afternoon with a friend, this will become one of your favourite spots.

SNACK

CAFFÉ VENEZIA

Step into Caffé Venezia, a captivating fusion of Venetian Art Deco design infused with a modern touch. This cafe remains a well-kept secret, offering a sophisticated Italian dining experience in an ambiance that's a dream come to life.



Want to sample a range of cuisines from around the globe, all under one roof? Look no further. Whether you fancy authentic Tibetan and Nepalese cuisine, Turkish flat breads and kebabs, sampling street food from Mumbai, or you simply want to enjoy the live music, Market Place is the perfect place to grab a bite to eat and catch up with friends.



MARKET PLACE HOUNSLOW



EN



RICHER



PARK LIFE

HOUNSLOW HEATH

06

MIN CYCLE

LAMPTON PARK

09

MIN WALK

INWOOD PARK

09

MIN WALK

OSTERLEY PARK

11

MIN CYCLE

KEW GARDENS

21

MIN CYCLE

RICHMOND PARK

28

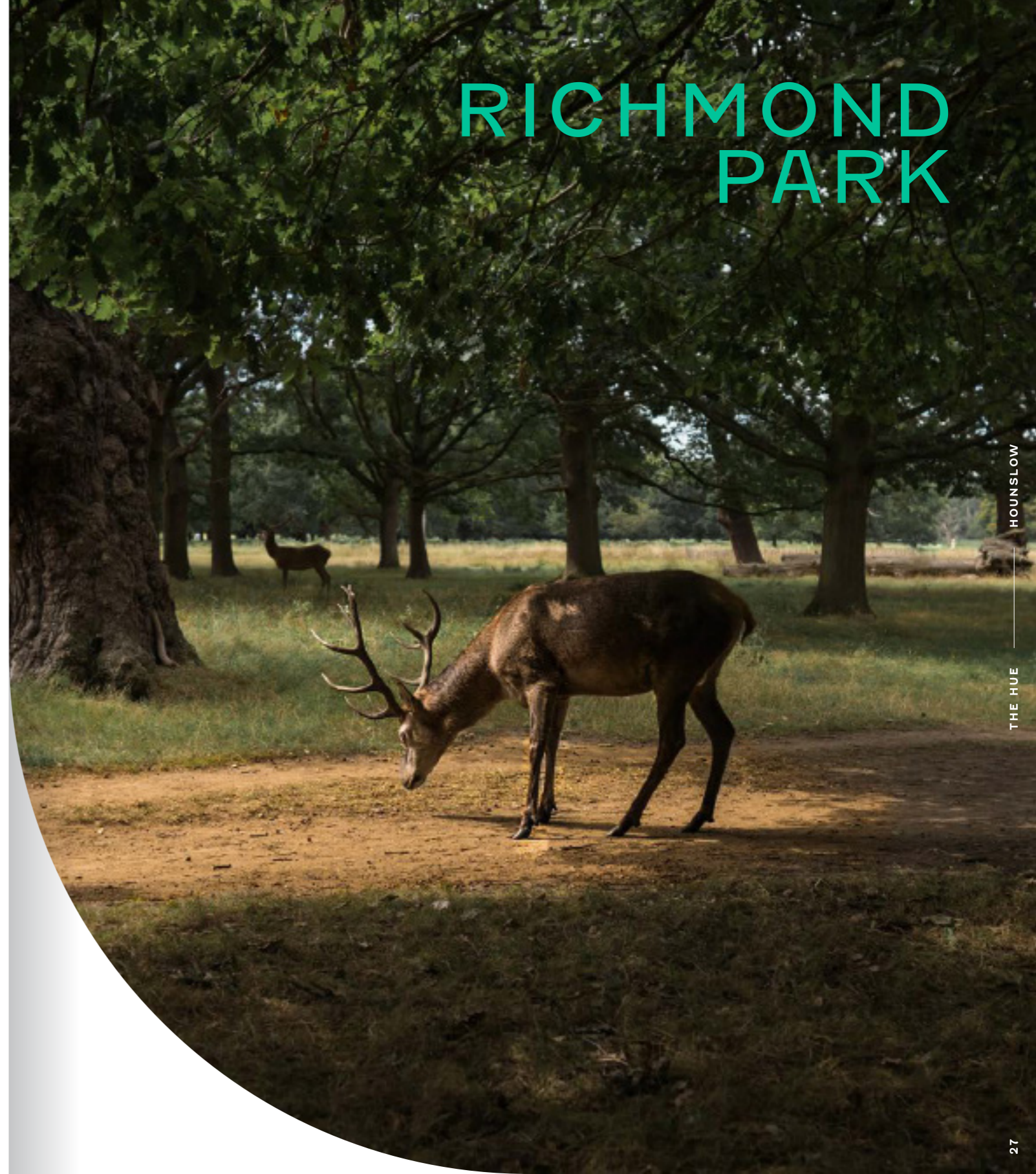
MIN CYCLE

The expansive landscapes and diverse ecosystems of Hounslow Heath beckon outdoor enthusiasts with opportunities for jogging, cycling, and golf, offering a revitalising escape. Meanwhile, Richmond Park, renowned for its lush greenery and iconic deer herds, offers a scenic backdrop for picnics and family outings.



HOUNSLOW HEATH

RICHMOND PARK



BR

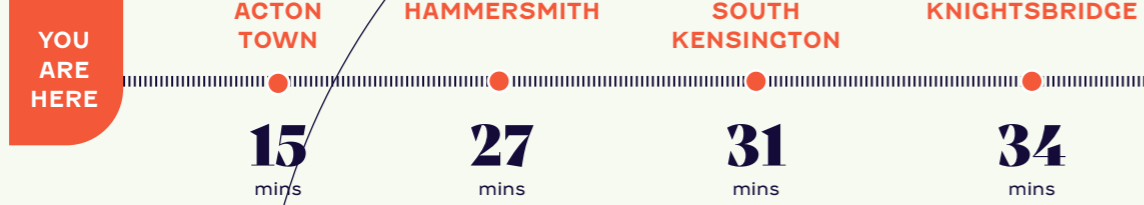
OA



DEN

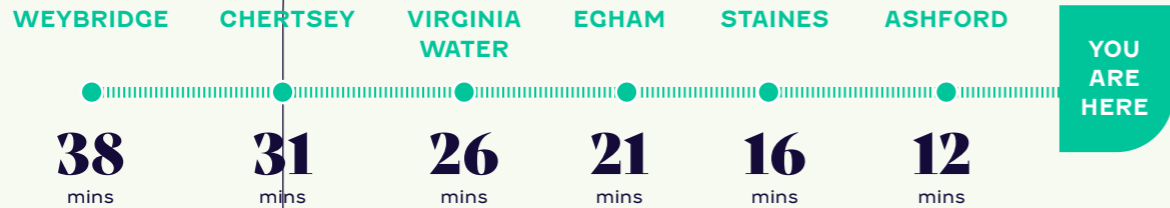
TUBE

From Hounslow Central Station



TRAIN

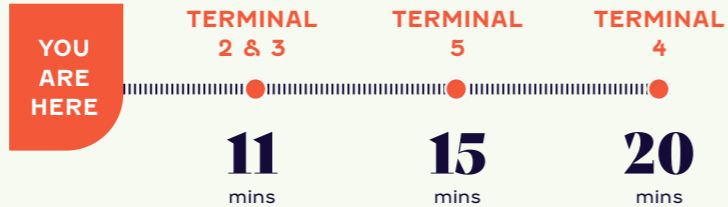
From Hounslow Station



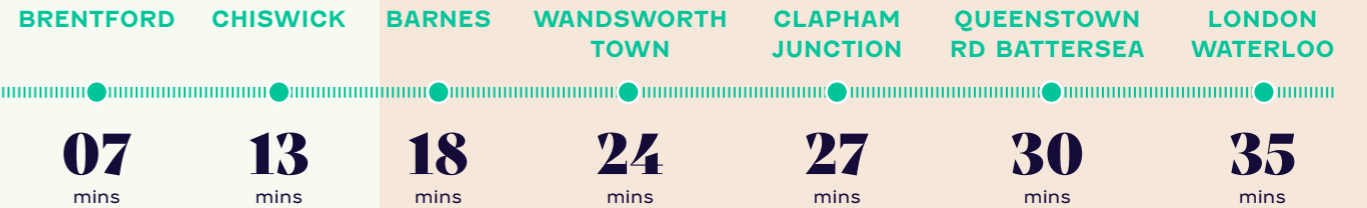
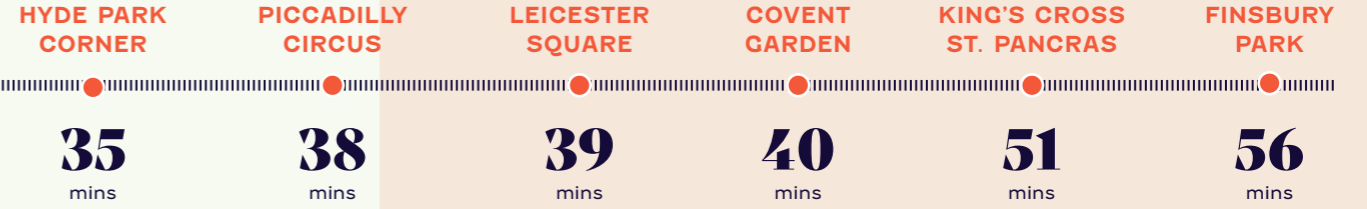
AIR

By tube from Hounslow Central

Whether you're travelling for work or pleasure, The Hue boasts excellent connections to London Heathrow, ensuring you're perfectly placed to catch both domestic and international flights.



STAY CONNECTED



WALK

From The Hue

Whether your commuting or venturing into the city to explore, a choice of train stations are on your doorstep.



Travel times from Hounslow Central Station taken from nationalrail.co.uk & google.co.uk/maps and are approximate only.

PRIMARY

ST MICHAEL & MARTIN
CATHOLIC PRIMARY SCHOOL

0.4
miles

9
mins walk

OFSTED
OUTSTANDING (2023)

HOUNSLOW TOWN
PRIMARY SCHOOL

0.5
miles

11
mins walk

OFSTED
GOOD (2021)

GROVE ROAD
PRIMARY SCHOOL

0.5
miles

11
mins walk

OFSTED
GOOD (2022)

CHATSWORTH
PRIMARY SCHOOL

0.7
miles

16
mins walk

OFSTED
GOOD (2019)

ALEXANDRA
PRIMARY SCHOOL

0.8
miles

17
mins walk

OFSTED
GOOD (2023)

From esteemed public institutions to specialist academies,
Hounslow caters to every learner's needs.

EMPOWERING MINDS

SECONDARY

ST MARK'S
CATHOLIC SCHOOL

0.5
miles

10
mins walk

OFSTED
OUTSTANDING (2022)

LAMPTON
ACADEMY

0.8
miles

17
mins walk

OFSTED
OUTSTANDING (2013)

THE HEATHLAND
SCHOOL

1
mile

21
mins walk

OFSTED
OUTSTANDING (2013)

NISHKAM SCHOOL WEST
LONDON

2.5
miles

58
mins walk

OFSTED
OUTSTANDING (2022)

FURTHER

NEW LONDON
COLLEGE

0.2
miles

4
mins walk

WEST THAMES
COLLEGE

1.2
miles

28
mins walk

UNIVERSITY OF
WEST LONDON

4.5
miles

31
mins train

BRUNEL
UNIVERSITY

7.5
miles

57
mins bus

Travel times from Hounslow Central Station taken from nationalrail.co.uk & google.co.uk/maps and are approximate only.

UN



VIEW
IND



SPECIFICATION

KITCHEN

- Laminate worktop
- Handleless cabinets
- Integrated appliances including:
 - Bosch oven and ceramic hob
 - Bosch extractor
 - Hotpoint dishwasher
 - Hotpoint fridge / freezer
- Stainless steel sink

BATHROOM & EN-SUITE

- Large format floor and wall tiles
- Vitra bath, WC and basin
- Two panel hinged bath screen
- Hansgrohe mixer tap
- Hansgrohe bath / shower valves
- Mirrored wall
- Heated towel rail

INTERIOR FINISHES

- Built-in storage cupboard in hall
- Hotpoint washer-dryer in hall cupboard
- Fitted wardrobe to primary bedroom
- Carpet to bedrooms
- Karndean laminate wood effect flooring to kitchen, living room, dining room and hallway

ELECTRICAL & LIGHTING

- Underfloor heating throughout
- LED ceiling recessed downlights throughout
- Data, telephone, Sky Q, and Hyperoptic wiring provided
- White electrical sockets throughout, except chrome above kitchen counter
- White-finish shaver sockets in bathroom and en-suite

Whilst every effort has been taken to ensure that the information here is correct, it has been supplied as a guide. FABRICA reserves the right to amend the specification as necessary and without notification.

HOUNSLOW HIGH STREET
2 MINUTE WALK

HOUNSLOW CENTRAL
TUBE STATION
6 MINUTE WALK



PARSONAGE ROAD

AINSWORTH HOUSE

ENTRANCE

CALLEVA HOUSE

ENTRANCE

BELL ROAD

PODIUM GARDEN

HOUNSLOW TRAIN STATION
10 MINUTE WALK

FEATHERSTONE HOUSE
(AFFORDABLE RENT)

ENTRANCE

EMPSON HOUSE

COMMUNAL TERRACE

GROVE ROAD

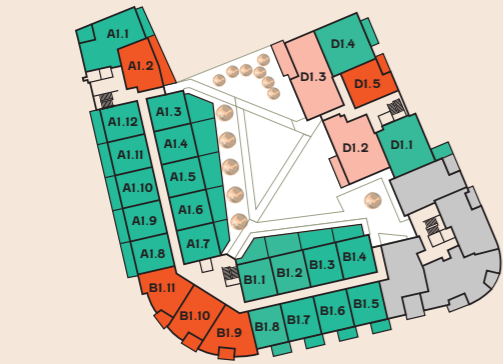
TAKE A
CLOSER LOOK

Walking times taken from www.google.co.uk/maps and are approximate only. The development layout does not show details of gradients of land, boundary treatments, local authority street lighting or landscaping. It is our intention to build in accordance with this layout. However, there may be occasions when the designs, boundaries, landscaping and positions of roads and footpaths change as the development proceeds. Please speak to a member of our Sales Team for more details.

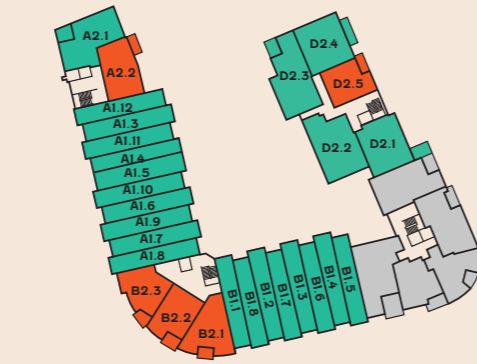
DISCOVER ANOTHER LEVEL



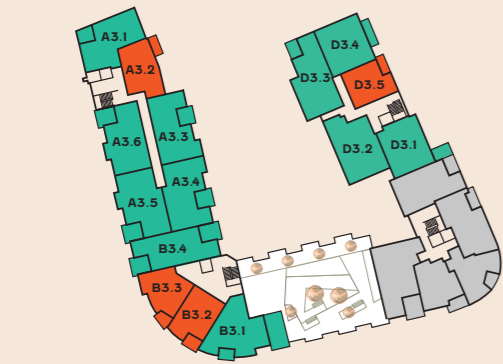
— 1 BEDROOMS
— 2 BEDROOMS



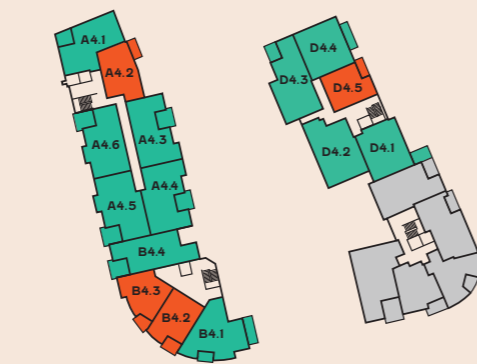
01



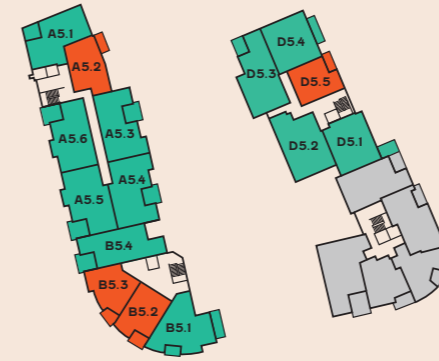
02



03



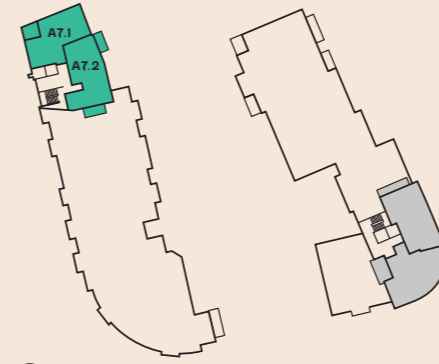
04



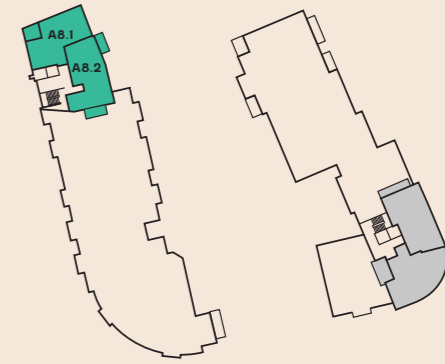
05



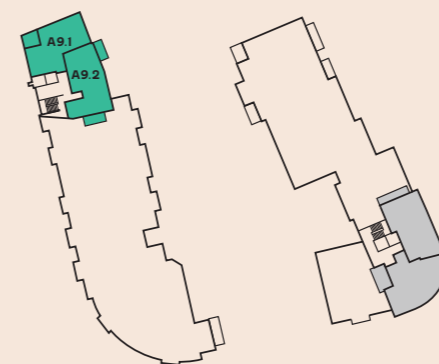
06



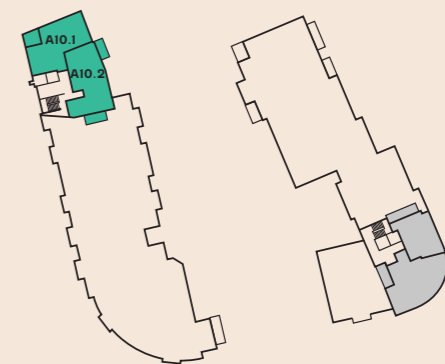
07



08



09



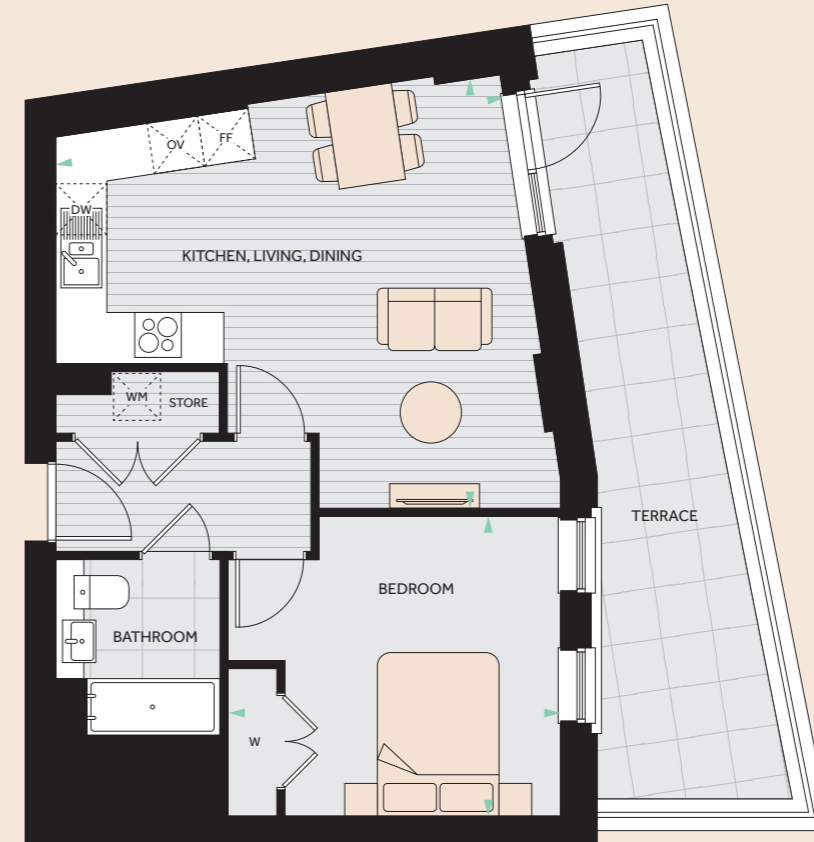
10

01

BEDROOM APARTMENTS



TYPE **2C** PLOT A1.2



KITCHEN/LIVING/DINING AREA	5.43M X 5.30M / 17'10" X 17'5"
BEDROOM	4.07M X 3.66M / 13'5" X 12'0"
TOTAL AREA	50 SQ.M / 538 SQ.FT

- TENTH
- NINTH
- EIGHTH
- SEVENTH
- SIXTH
- FIFTH
- FOURTH
- THIRD
- SECOND
- FIRST

KEY
 DW- DISHWASHER | FF- FRIDGE FREEZER | OV- OVEN | W- WARDROBE | WM- WASHING MACHINE

Floorplans shown are indicative only. The kitchen layout and furniture positions are for indicative purposes only. All dimensions indicated are approximate and should not be relied upon for carpet sizes or items of furniture. The developer reserves the right to make changes to these plans prior to exchange of contracts. For exact plot specification, details of external and internal finishes, dimensions and floorplan differences, please speak to a member of our Sales Team for more details.

TYPE

6

PLOT B1.9



KITCHEN/LIVING/DINING AREA	6.27M X 5.31M / 20'7" X 17'5"
BEDROOM	6.89M X 3.09M / 22'7" X 10'2"
TOTAL AREA	54 SQ.M / 581 SQ.FT

- TENTH
- NINTH
- EIGHTH
- SEVENTH
- SIXTH
- FIFTH
- FOURTH
- THIRD
- SECOND
- FIRST

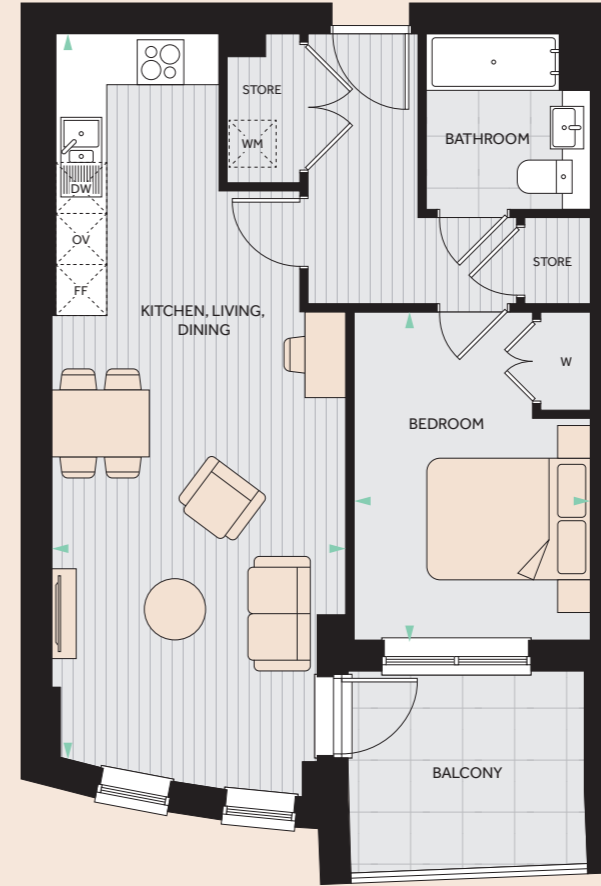
KEY
 DW- DISHWASHER | FF- FRIDGE FREEZER | OV- OVEN | W- WARDROBE | WM- WASHING MACHINE

Floorplans shown are indicative only. The kitchen layout and furniture positions are for indicative purposes only. All dimensions indicated are approximate and should not be relied upon for carpet sizes or items of furniture. The developer reserves the right to make changes to these plans prior to exchange of contracts. For exact plot specification, details of external and internal finishes, dimensions and floorplan differences, please speak to a member of our Sales Team for more details.

TYPE

7

PLOTS B1.10, B2.2, B3.2, B4.2 & B5.2



KITCHEN/LIVING/DINING AREA	8.79M X 3.61M / 28'10" X 11'10"
BEDROOM	4.01M X 2.89M / 13'2" X 9'6"
TOTAL AREA	54 SQ.M / 581 SQ.FT

- TENTH
- NINTH
- EIGHTH
- SEVENTH
- SIXTH
- FIFTH
- FOURTH
- THIRD
- SECOND
- FIRST

KEY
 DW- DISHWASHER | FF- FRIDGE FREEZER | OV- OVEN | W- WARDROBE | WM- WASHING MACHINE

Floorplans shown are indicative only. The kitchen layout and furniture positions are for indicative purposes only. All dimensions indicated are approximate and should not be relied upon for carpet sizes or items of furniture. The developer reserves the right to make changes to these plans prior to exchange of contracts. For exact plot specification, details of external and internal finishes, dimensions and floorplan differences, please speak to a member of our Sales Team for more details.

TYPE

8

PLOTS B1.11, B2.3, B3.3, B4.3 & B5.3



KITCHEN/LIVING/DINING AREA	5.72M X 3.72M / 18'9" X 12'2"
BEDROOM	4.40M X 3.27M / 14'5" X 10'9"
TOTAL AREA	51 SQ.M / 548 SQ.FT

- TENTH
- NINTH
- EIGHTH
- SEVENTH
- SIXTH
- FIFTH
- FOURTH
- THIRD
- SECOND
- FIRST

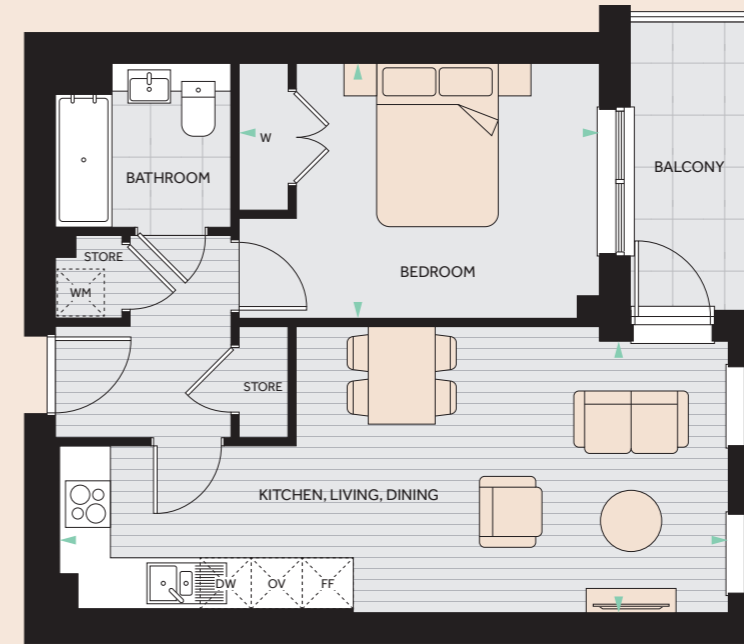
KEY
 DW- DISHWASHER | FF- FRIDGE FREEZER | OV- OVEN | W- WARDROBE | WM- WASHING MACHINE

Floorplans shown are indicative only. The kitchen layout and furniture positions are for indicative purposes only. All dimensions indicated are approximate and should not be relied upon for carpet sizes or items of furniture. The developer reserves the right to make changes to these plans prior to exchange of contracts. For exact plot specification, details of external and internal finishes, dimensions and floorplan differences, please speak to a member of our Sales Team for more details.

TYPE

17

PLOTS D1.5, D2.5, D3.5, D4.5 & D5.5



KITCHEN/LIVING/DINING AREA	8.19M X 3.33M / 26'11" X 10'11"
BEDROOM	4.42M X 3.12M / 14'6" X 10'3"
TOTAL AREA	50 SQ.M / 538 SQ.FT

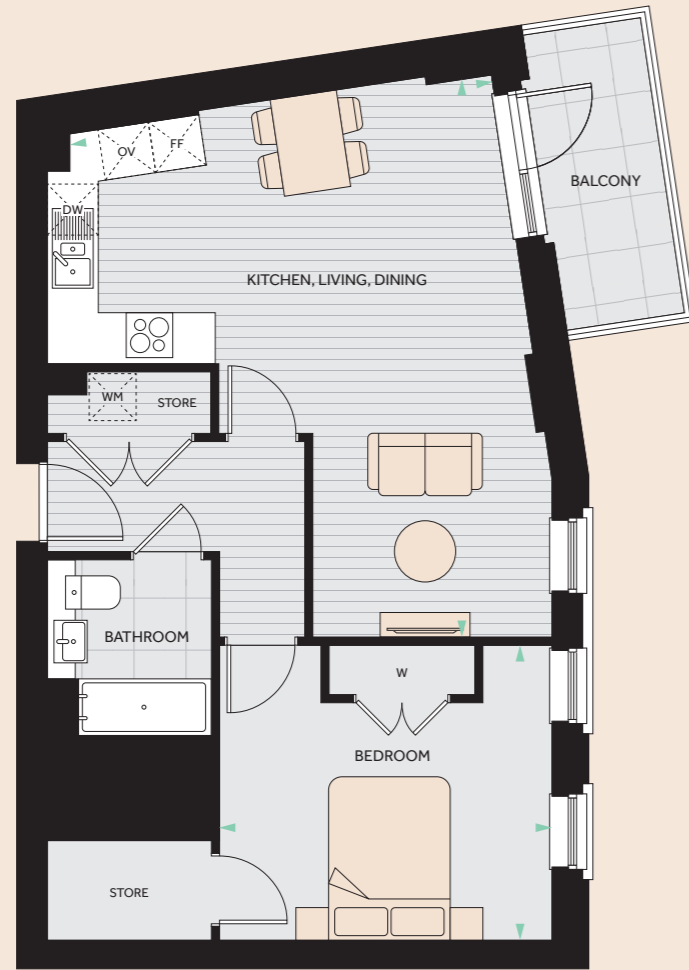
- TENTH
- NINTH
- EIGHTH
- SEVENTH
- SIXTH
- FIFTH
- FOURTH
- THIRD
- SECOND
- FIRST

KEY
 DW- DISHWASHER | FF- FRIDGE FREEZER | OV- OVEN | W- WARDROBE | WM- WASHING MACHINE

Floorplans shown are indicative only. The kitchen layout and furniture positions are for indicative purposes only. All dimensions indicated are approximate and should not be relied upon for carpet sizes or items of furniture. The developer reserves the right to make changes to these plans prior to exchange of contracts. For exact plot specification, details of external and internal finishes, dimensions and floorplan differences, please speak to a member of our Sales Team for more details.

TYPE
2B

PLOT A2.2



KITCHEN/LIVING/DINING AREA	6.87M X 5.21M / 22'7" X 17'1"
BEDROOM	4.07M X 3.63M / 13'5" X 11'10"
TOTAL AREA	59 SQ.M / 635 SQ.FT

- TENTH
- NINTH
- EIGHTH
- SEVENTH
- SIXTH
- FIFTH
- FOURTH
- THIRD
- SECOND
- FIRST

KEY
DW- DISHWASHER | FF- FRIDGE FREEZER | OV- OVEN | W- WARDROBE | WM- WASHING MACHINE

Floorplans shown are indicative only. The kitchen layout and furniture positions are for indicative purposes only. All dimensions indicated are approximate and should not be relied upon for carpet sizes or items of furniture. The developer reserves the right to make changes to these plans prior to exchange of contracts. For exact plot specification, details of external and internal finishes, dimensions and floorplan differences, please speak to a member of our Sales Team for more details.

TYPE
35

PLOT B2.1



KITCHEN/LIVING/DINING AREA	7.34M X 6.33M / 24'1" X 20'9"
BEDROOM	6.88M X 3.46M / 22'7" X 11'4"
TOTAL AREA	62.5 SQ.M / 672 SQ.FT

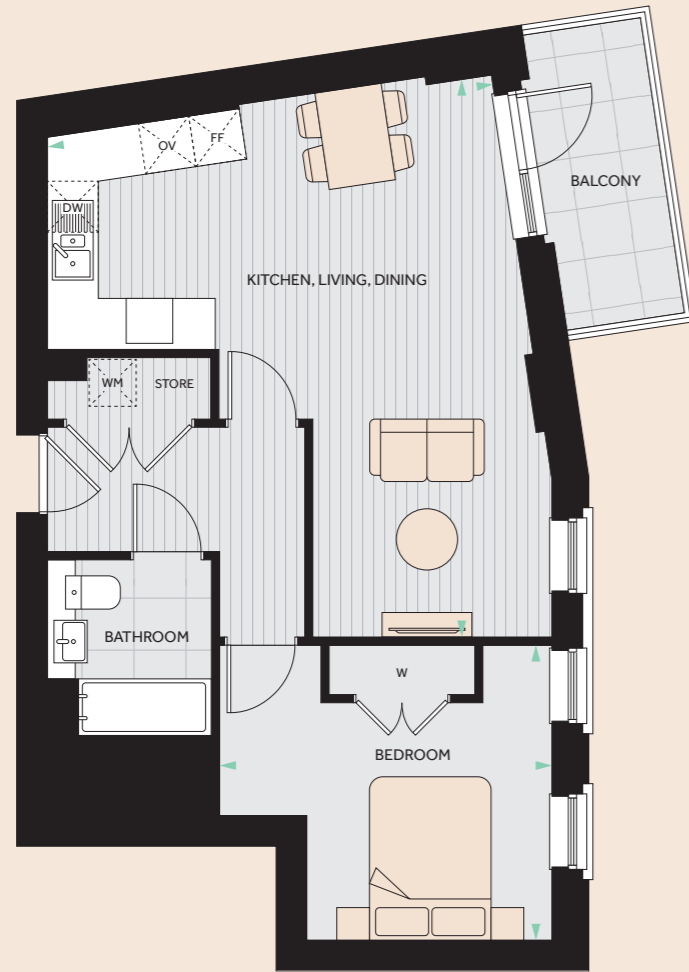
- TENTH
- NINTH
- EIGHTH
- SEVENTH
- SIXTH
- FIFTH
- FOURTH
- THIRD
- SECOND
- FIRST

KEY
DW- DISHWASHER | FF- FRIDGE FREEZER | OV- OVEN | W- WARDROBE | WM- WASHING MACHINE

Floorplans shown are indicative only. The kitchen layout and furniture positions are for indicative purposes only. All dimensions indicated are approximate and should not be relied upon for carpet sizes or items of furniture. The developer reserves the right to make changes to these plans prior to exchange of contracts. For exact plot specification, details of external and internal finishes, dimensions and floorplan differences, please speak to a member of our Sales Team for more details.

TYPE
2A

PLOTS A3.2, A4.2 & A5.2



KITCHEN/LIVING/DINING AREA	6.87M X 5.43M / 22'7" X 17'10"
BEDROOM	4.07M X 3.61M / 13'5" X 11'10"
TOTAL AREA	55 SQ.M / 592 SQ.FT

KEY
DW- DISHWASHER | FF- FRIDGE FREEZER | OV- OVEN | W- WARDROBE | WM- WASHING MACHINE

Floorplans shown are indicative only. The kitchen layout and furniture positions are for indicative purposes only. All dimensions indicated are approximate and should not be relied upon for carpet sizes or items of furniture. The developer reserves the right to make changes to these plans prior to exchange of contracts. For exact plot specification, details of external and internal finishes, dimensions and floorplan differences, please speak to a member of our Sales Team for more details.

- TENTH
- NINTH
- EIGHTH
- SEVENTH
- SIXTH
- FIFTH
- FOURTH
- THIRD
- SECOND
- FIRST



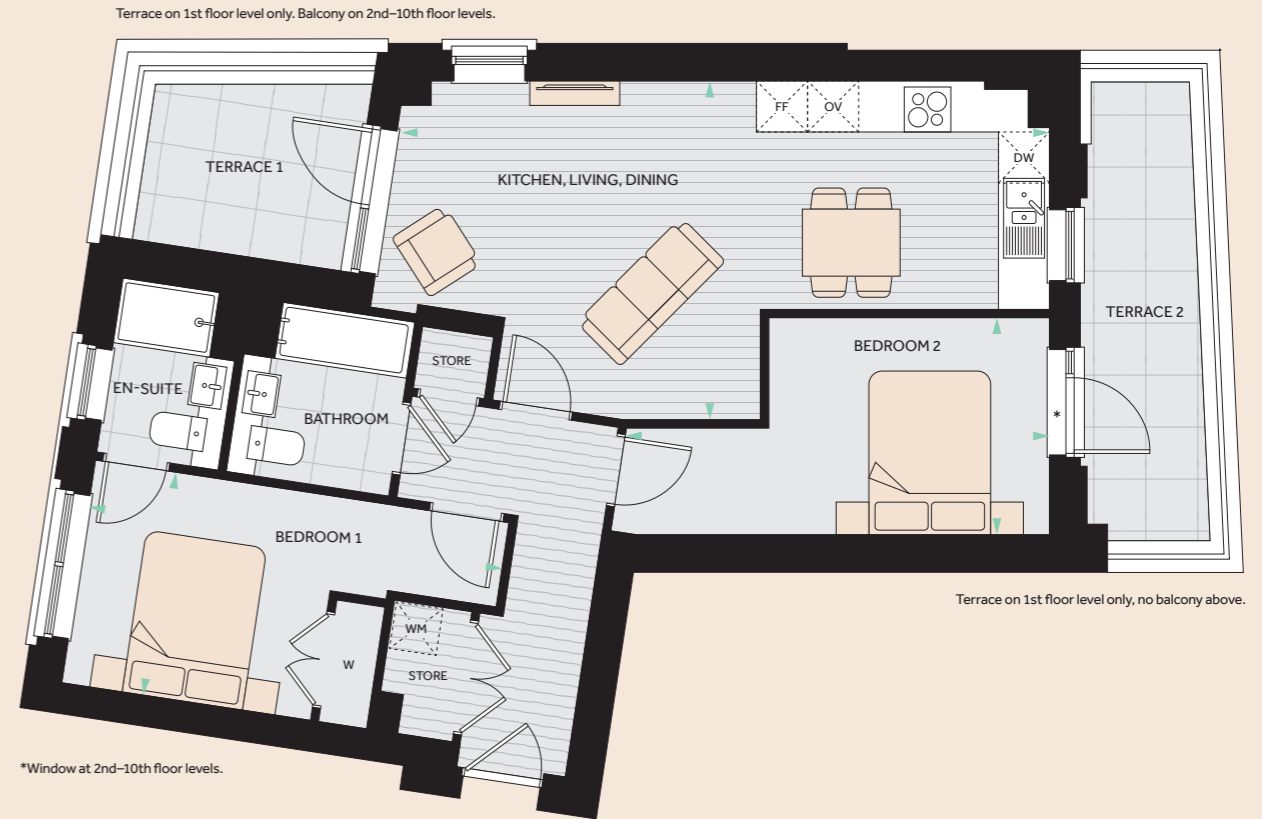
02

BEDROOM APARTMENTS



TYPE 1

PLOTS A1.1, A2.1, A3.1, A4.1, A5.1, A6.1, A7.1, A8.1, A9.1 & A10.1



KITCHEN/LIVING/DINING AREA	7.94M X 4.14M / 26'1" X 13'7"
BEDROOM 1	5.08M X 2.75M / 16'8" X 9'1"
BEDROOM 2	5.20M X 2.65M / 17'1" X 8'8"
TOTAL AREA	70 SQ.M / 753 SQ.FT

- TENTH
- NINTH
- EIGHTH
- SEVENTH
- SIXTH
- FIFTH
- FOURTH
- THIRD
- SECOND
- FIRST

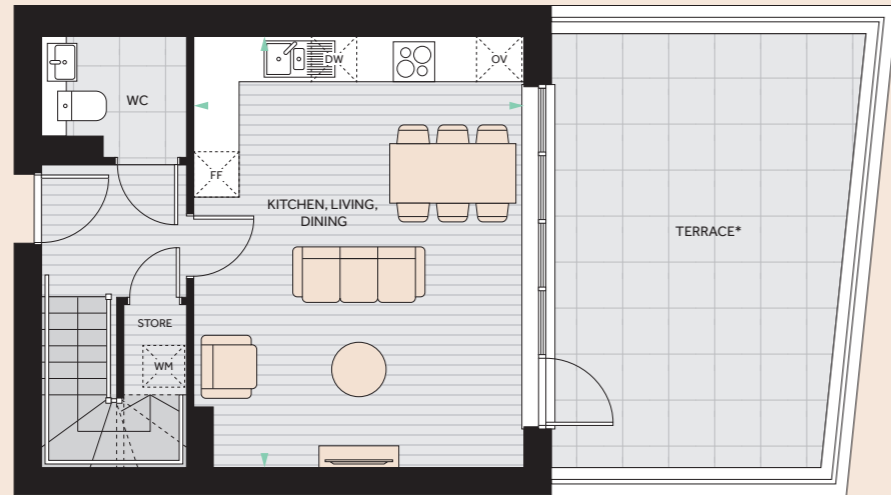
KEY
 DW- DISHWASHER | FF- FRIDGE FREEZER | OV- OVEN | W- WARDROBE | WM- WASHING MACHINE

Floorplans shown are indicative only. The kitchen layout and furniture positions are for indicative purposes only. All dimensions indicated are approximate and should not be relied upon for carpet sizes or items of furniture. The developer reserves the right to make changes to these plans prior to exchange of contracts. For exact plot specification, details of external and internal finishes, dimensions and floorplan differences, please speak to a member of our Sales Team for more details.

TYPE

3

PLOTS A1.3, A1.4, A1.5, A1.6, A1.7, B1.1, B1.2, B1.3 & B1.4



■ Lower ceiling height in bedroom 1 in apartments A1.4, A1.7 and B1.1 where indicated.
 ■ Lower ceiling height in bedroom 2 in apartments A1.3, A1.6, A1.7 and B1.1 where indicated.
 *Terrace sizes vary for each apartment, see floorplate.

KITCHEN/LIVING/DINING AREA	5.94M X 4.55M / 19'6" X 14'11"
BEDROOM 1	5.23M X 2.84M / 17'2" X 9'4"
BEDROOM 2	4.32M X 2.84M / 14'2" X 9'4"
TOTAL AREA	85.5 SQ.M / 920 SQ.FT

- TENTH
- NINTH
- EIGHTH
- SEVENTH
- SIXTH
- FIFTH
- FOURTH
- THIRD
- SECOND
- FIRST

KEY

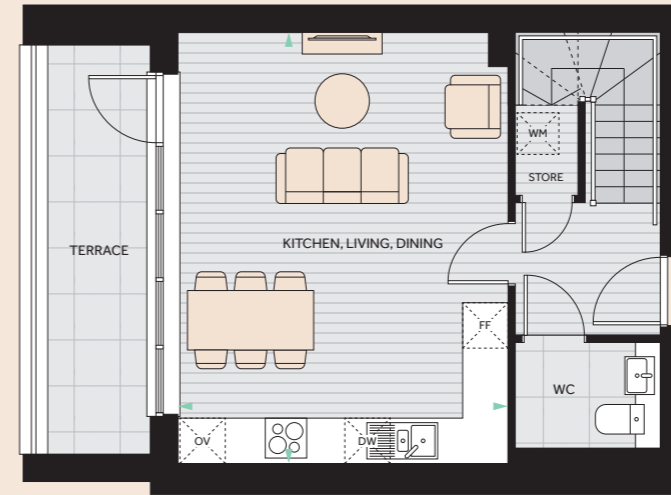
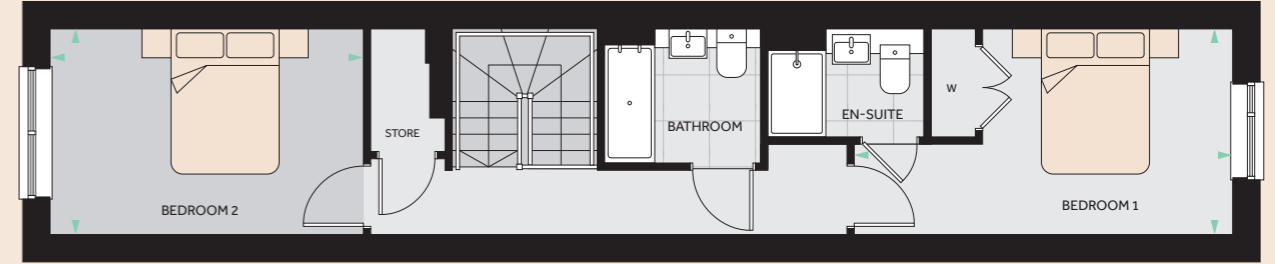
DW- DISHWASHER | FF- FRIDGE FREEZER | OV- OVEN | W- WARDROBE | WM- WASHING MACHINE

Floorplans shown are indicative only. The kitchen layout and furniture positions are for indicative purposes only. All dimensions indicated are approximate and should not be relied upon for carpet sizes or items of furniture. The developer reserves the right to make changes to these plans prior to exchange of contracts. For exact plot specification, details of external and internal finishes, dimensions and floorplan differences, please speak to a member of our Sales Team for more details.

TYPE

4

PLOTS A1.8, A1.9, A1.10, A1.11 & A1.12



■ Lower ceiling height in apartments A1.8, A1.9 and A1.12 where indicated.

KITCHEN/LIVING/DINING AREA	5.94M X 4.55M / 19'6" X 14'11"
BEDROOM 1	5.23M X 2.84M / 17'2" X 9'4"
BEDROOM 2	4.32M X 2.84M / 14'2" X 9'4"
TOTAL AREA	85.5 SQ.M / 920 SQ.FT

- TENTH
- NINTH
- EIGHTH
- SEVENTH
- SIXTH
- FIFTH
- FOURTH
- THIRD
- SECOND
- FIRST

KEY

DW- DISHWASHER | FF- FRIDGE FREEZER | OV- OVEN | W- WARDROBE | WM- WASHING MACHINE

Floorplans shown are indicative only. The kitchen layout and furniture positions are for indicative purposes only. All dimensions indicated are approximate and should not be relied upon for carpet sizes or items of furniture. The developer reserves the right to make changes to these plans prior to exchange of contracts. For exact plot specification, details of external and internal finishes, dimensions and floorplan differences, please speak to a member of our Sales Team for more details.

TYPE

5

PLOTS B1.5, B1.6, B1.7 & B1.8



■ Lower ceiling height in apartment B1.8 where indicated.

KITCHEN/LIVING/DINING AREA	5.94M X 4.55M / 19'6" X 14'11"
BEDROOM 1	5.23M X 2.84M / 17'2" X 9'4"
BEDROOM 2	4.32M X 2.84M / 14'2" X 9'4"
TOTAL AREA	85.5 SQ.M / 920 SQ.FT

- TENTH
- NINTH
- EIGHTH
- SEVENTH
- SIXTH
- FIFTH
- FOURTH
- THIRD
- SECOND
- FIRST

KEY

DW- DISHWASHER | FF- FRIDGE FREEZER | OV- OVEN | W- WARDROBE | WM- WASHING MACHINE

Floorplans shown are indicative only. The kitchen layout and furniture positions are for indicative purposes only. All dimensions indicated are approximate and should not be relied upon for carpet sizes or items of furniture. The developer reserves the right to make changes to these plans prior to exchange of contracts. For exact plot specification, details of external and internal finishes, dimensions and floorplan differences, please speak to a member of our Sales Team for more details.

TYPE

13

PLOTS D1.1, D2.1, D3.1, D4.1 & D5.1



KITCHEN/LIVING/DINING AREA	7.63M X 3.44M / 25'1" X 11'4"
BEDROOM 1	4.43M X 3.35M / 14'7" X 11'0"
BEDROOM 2	4.43M X 2.65M / 14'7" X 8'8"
TOTAL AREA	72.5 SQ.M / 780 SQ.FT

- TENTH
- NINTH
- EIGHTH
- SEVENTH
- SIXTH
- FIFTH
- FOURTH
- THIRD
- SECOND
- FIRST

KEY

DW- DISHWASHER | FF- FRIDGE FREEZER | OV- OVEN | W- WARDROBE | WM- WASHING MACHINE

Floorplans shown are indicative only. The kitchen layout and furniture positions are for indicative purposes only. All dimensions indicated are approximate and should not be relied upon for carpet sizes or items of furniture. The developer reserves the right to make changes to these plans prior to exchange of contracts. For exact plot specification, details of external and internal finishes, dimensions and floorplan differences, please speak to a member of our Sales Team for more details.

TYPE
16

PLOTS D1.4, D2.4, D3.4, D4.4 & D5.4



KITCHEN/LIVING/DINING AREA	8.11M X 2.98M / 26'7" X 9'9"
BEDROOM 1	4.46M X 2.85M / 14'8" X 9'4"
BEDROOM 2	4.46M X 2.65M / 14'8" X 8'8"
TOTAL AREA	70.5 SQ.M / 758 SQ.FT

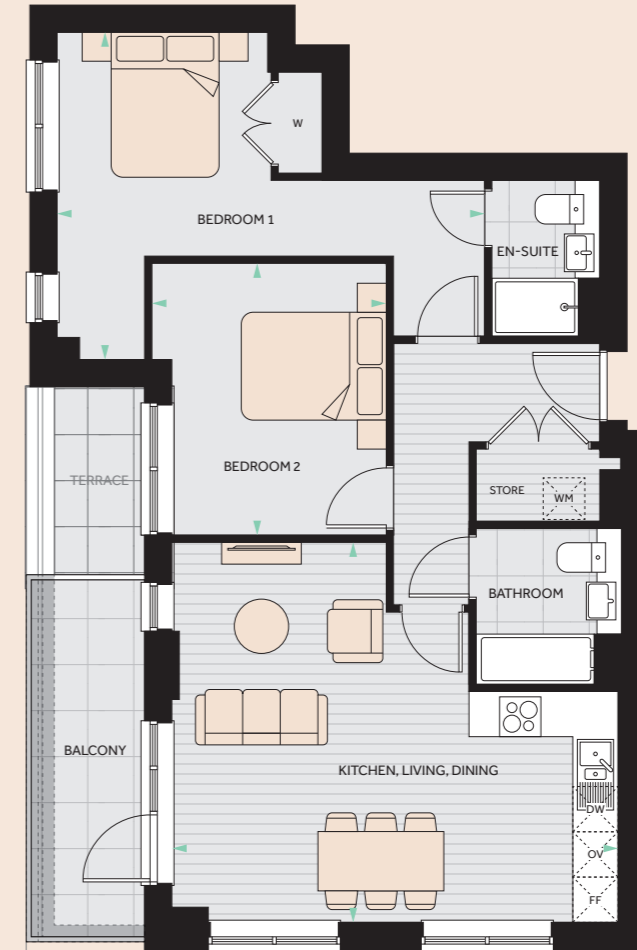
- TENTH
- NINTH
- EIGHTH
- SEVENTH
- SIXTH
- FIFTH
- FOURTH
- THIRD
- SECOND
- FIRST

KEY
DW- DISHWASHER | FF- FRIDGE FREEZER | OV- OVEN | W- WARDROBE | WM- WASHING MACHINE

Floorplans shown are indicative only. The kitchen layout and furniture positions are for indicative purposes only. All dimensions indicated are approximate and should not be relied upon for carpet sizes or items of furniture. The developer reserves the right to make changes to these plans prior to exchange of contracts. For exact plot specification, details of external and internal finishes, dimensions and floorplan differences, please speak to a member of our Sales Team for more details.

TYPE
22

PLOTS D2.2, D3.2, D4.2 & D5.2



Terrace on 2nd floor level only, Balcony on 3rd-5th floor levels.

KITCHEN/LIVING/DINING AREA	6.15M X 5.23M / 20'2" X 17'2"
BEDROOM	5.89M X 4.51M / 19'4" X 14'10"
BEDROOM	3.75M X 3.25M / 12'4" X 10'8"
TOTAL AREA	73 SQ.M / 785 SQ.FT

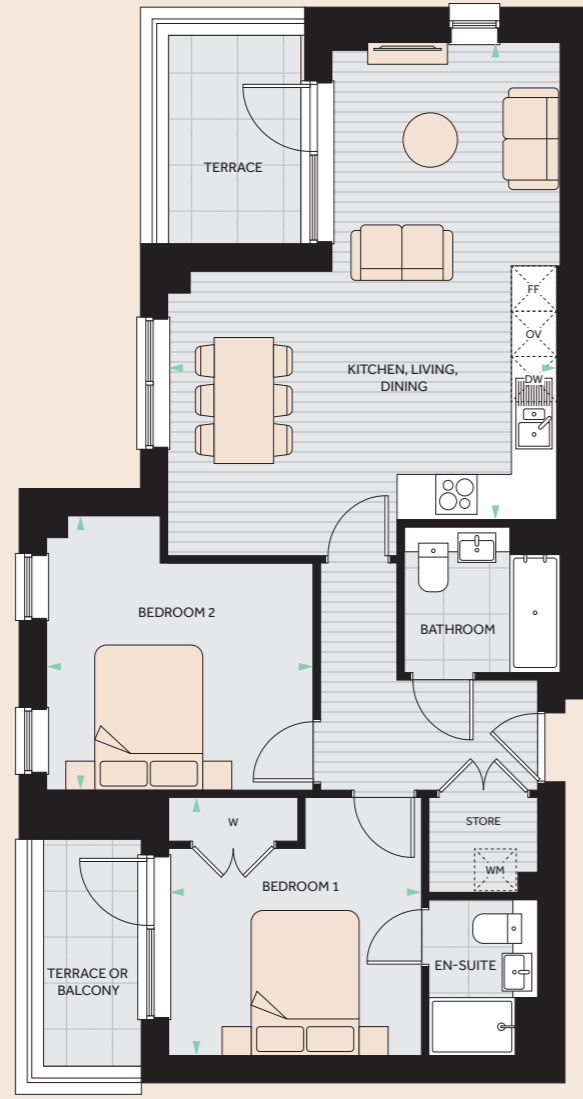
- TENTH
- NINTH
- EIGHTH
- SEVENTH
- SIXTH
- FIFTH
- FOURTH
- THIRD
- SECOND
- FIRST

KEY
DW- DISHWASHER | FF- FRIDGE FREEZER | OV- OVEN | W- WARDROBE | WM- WASHING MACHINE

Floorplans shown are indicative only. The kitchen layout and furniture positions are for indicative purposes only. All dimensions indicated are approximate and should not be relied upon for carpet sizes or items of furniture. The developer reserves the right to make changes to these plans prior to exchange of contracts. For exact plot specification, details of external and internal finishes, dimensions and floorplan differences, please speak to a member of our Sales Team for more details.

TYPE
23

PLOTS D2.3, D3.3, D4.3 & D5.3



Terraces on 2nd floor level only. Balconies on 3rd-5th floor levels.

KITCHEN/LIVING/DINING AREA	6.58M X 5.36M / 21'7" X 17'7"
BEDROOM 1	3.56M X 3.50M / 11'8" X 11'6"
BEDROOM 2	3.78M X 3.69M / 12'5" X 12'2"
TOTAL AREA	73 SQ.M / 785 SQ.FT

- TENTH
- NINTH
- EIGHTH
- SEVENTH
- SIXTH
- FIFTH
- FOURTH
- THIRD
- SECOND
- FIRST

KEY
DW- DISHWASHER | FF- FRIDGE FREEZER | OV- OVEN | W- WARDROBE | WM- WASHING MACHINE

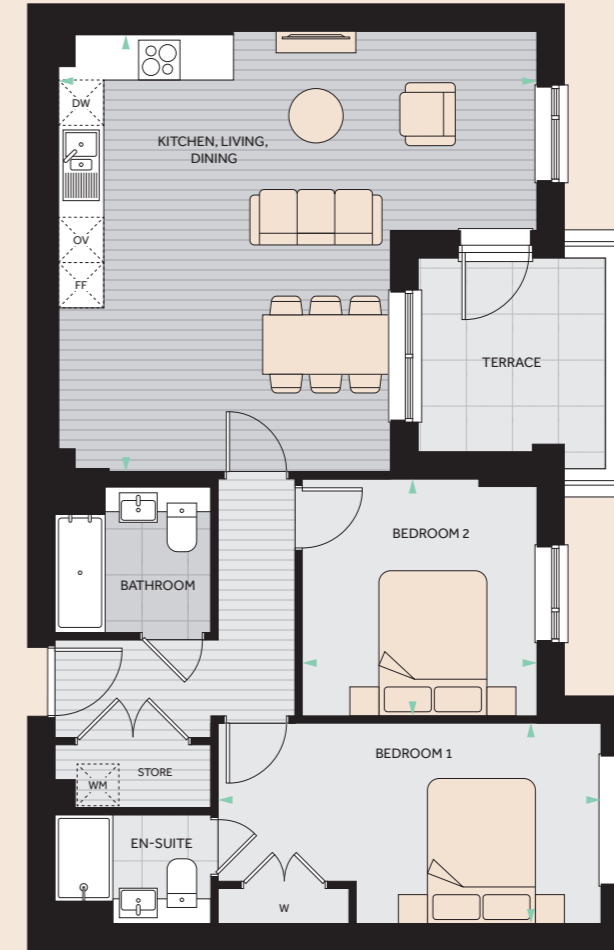
Floorplans shown are indicative only. The kitchen layout and furniture positions are for indicative purposes only. All dimensions indicated are approximate and should not be relied upon for carpet sizes or items of furniture. The developer reserves the right to make changes to these plans prior to exchange of contracts. For exact plot specification, details of external and internal finishes, dimensions and floorplan differences, please speak to a member of our Sales Team for more details.



TYPE
24

PLOTS A3.3, A4.3 & A5.3

Terrace on 3rd floor level only. Balcony on 4th and 5th floor levels.



Lower ceiling height in kitchen, dining, living in apartment A5.3 where indicated.
Lower ceiling height in bathroom in apartment A3.3 where indicated.

KITCHEN/LIVING/DINING AREA	6.60M X 6.06M / 21'8" X 19'11"
BEDROOM 1	5.30M X 2.75M / 17'5" X 9'0"
BEDROOM 2	3.26M X 3.25M / 10'9" X 10'8"
TOTAL AREA	77 SQ.M / 828 SQ.FT

- TENTH
- NINTH
- EIGHTH
- SEVENTH
- SIXTH
- FIFTH
- FOURTH
- THIRD
- SECOND
- FIRST

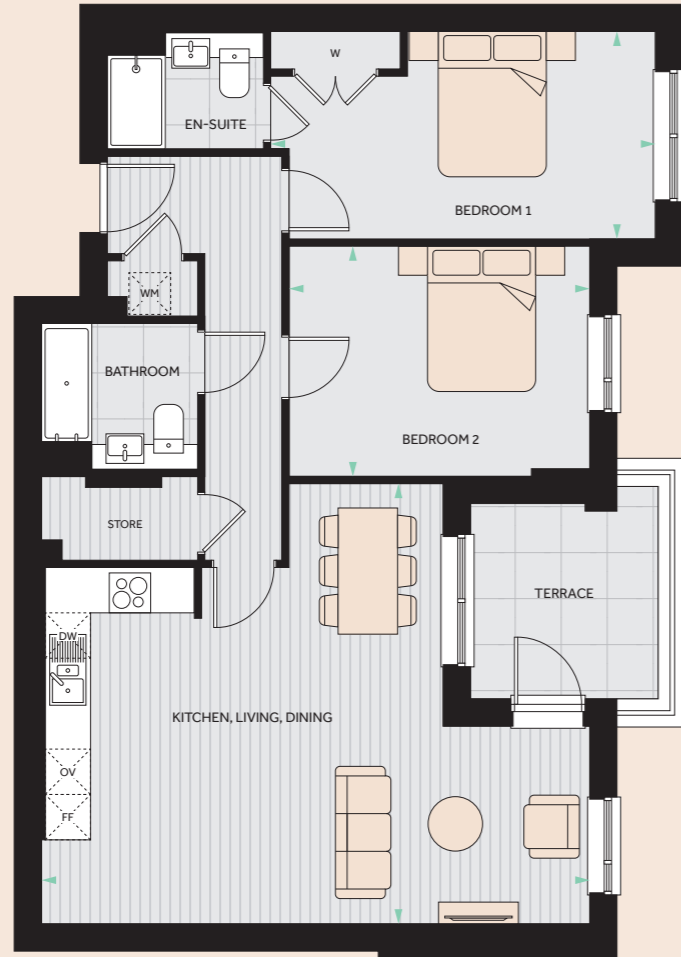
KEY
DW- DISHWASHER | FF- FRIDGE FREEZER | OV- OVEN | W- WARDROBE | WM- WASHING MACHINE

Floorplans shown are indicative only. The kitchen layout and furniture positions are for indicative purposes only. All dimensions indicated are approximate and should not be relied upon for carpet sizes or items of furniture. The developer reserves the right to make changes to these plans prior to exchange of contracts. For exact plot specification, details of external and internal finishes, dimensions and floorplan differences, please speak to a member of our Sales Team for more details.



TYPE
25

PLOTS A3.4, A4.4 & A5.4



Terrace on 3rd floor level only. Balcony on 4th and 5th floor levels.

KITCHEN/LIVING/DINING AREA	7.55M X 6.06M / 24'9" X 19'11"
BEDROOM 1	5.30M X 2.84M / 17'5" X 9'4"
BEDROOM 2	4.15M X 3.17M / 13'7" X 10'5"
TOTAL AREA	84 SQ.M / 904 SQ.FT

KEY
DW- DISHWASHER | FF- FRIDGE FREEZER | OV- OVEN | W- WARDROBE | WM- WASHING MACHINE

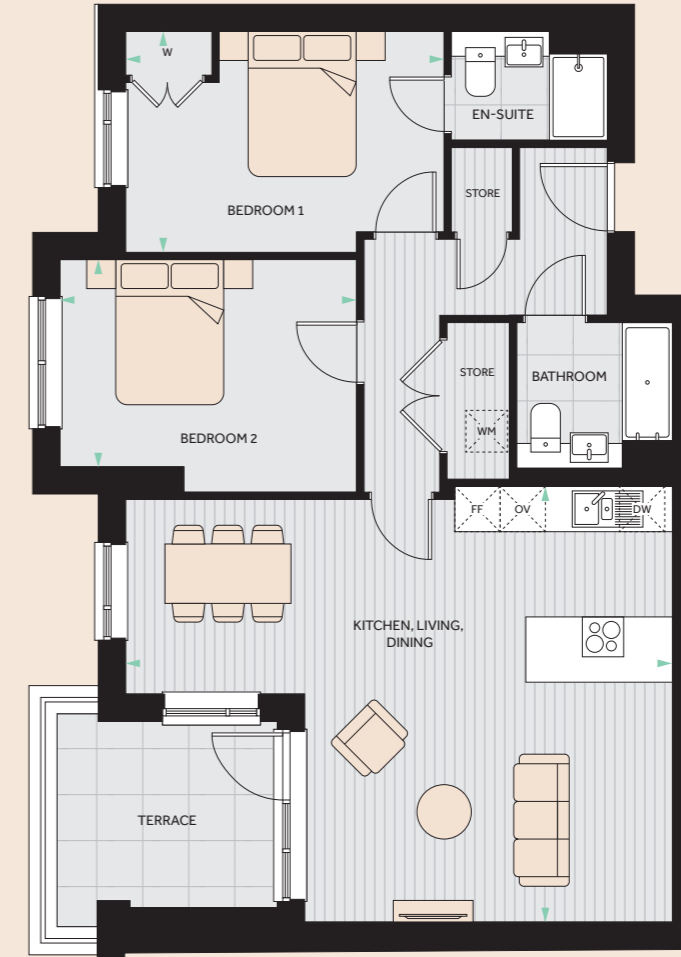
Floorplans shown are indicative only. The kitchen layout and furniture positions are for indicative purposes only. All dimensions indicated are approximate and should not be relied upon for carpet sizes or items of furniture. The developer reserves the right to make changes to these plans prior to exchange of contracts. For exact plot specification, details of external and internal finishes, dimensions and floorplan differences, please speak to a member of our Sales Team for more details.



- TENTH
- NINTH
- EIGHTH
- SEVENTH
- SIXTH
- FIFTH
- FOURTH
- THIRD
- SECOND
- FIRST

TYPE
26

PLOTS A3.5, A4.5 & A5.5



Terrace on 3rd floor level only. Balcony on 4th and 5th floor levels.

KITCHEN/LIVING/DINING AREA	7.55M X 6.01M / 24'9" X 19'9"
BEDROOM 1	4.40M X 3.04M / 14'5" X 10'0"
BEDROOM 2	4.10M X 2.84M / 13'5" X 9'4"
TOTAL AREA	83 SQ.M / 893 SQ.FT

KEY
DW- DISHWASHER | FF- FRIDGE FREEZER | OV- OVEN | W- WARDROBE | WM- WASHING MACHINE

Floorplans shown are indicative only. The kitchen layout and furniture positions are for indicative purposes only. All dimensions indicated are approximate and should not be relied upon for carpet sizes or items of furniture. The developer reserves the right to make changes to these plans prior to exchange of contracts. For exact plot specification, details of external and internal finishes, dimensions and floorplan differences, please speak to a member of our Sales Team for more details.

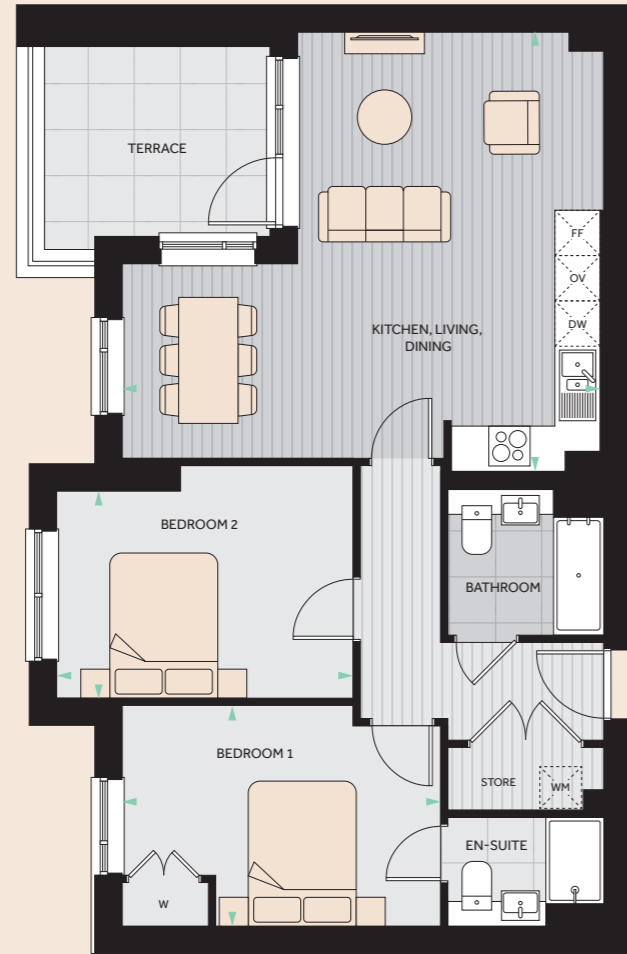


- TENTH
- NINTH
- EIGHTH
- SEVENTH
- SIXTH
- FIFTH
- FOURTH
- THIRD
- SECOND
- FIRST

TYPE
27

PLOTS A3.6, A4.6 & A5.6

Terrace on 3rd floor level only. Balcony on 4th and 5th floor levels.



■ Lower ceiling height in kitchen, dining, living in apartment A5.6 where indicated.
■ Lower ceiling height in bathroom in apartment A3.6 where indicated.

KITCHEN/LIVING/DINING AREA	6.60M X 6.06M / 21'8" X 19'11"
BEDROOM 1	4.40M X 3.04M / 14'5" X 10'0"
BEDROOM 2	4.10M X 2.84M / 13'5" X 9'4"
TOTAL AREA	76 SQ.M / 818 SQ.FT

- TENTH
- NINTH
- EIGHTH
- SEVENTH
- SIXTH
- FIFTH
- FOURTH
- THIRD
- SECOND
- FIRST

KEY
DW- DISHWASHER | FF- FRIDGE FREEZER | OV- OVEN | W- WARDROBE | WM- WASHING MACHINE

Floorplans shown are indicative only. The kitchen layout and furniture positions are for indicative purposes only. All dimensions indicated are approximate and should not be relied upon for carpet sizes or items of furniture. The developer reserves the right to make changes to these plans prior to exchange of contracts. For exact plot specification, details of external and internal finishes, dimensions and floorplan differences, please speak to a member of our Sales Team for more details.



TYPE
28

PLOTS B3.1, B4.1 & B5.1

Balcony on 4th and 5th floor levels.



Terrace on 3rd floor level only.

KITCHEN/LIVING/DINING AREA	5.68M X 5.22M / 18'8" X 17'2"
BEDROOM 1	6.04M X 3.46M / 19'10" X 11'4"
BEDROOM 2	2.93M X 2.79M / 9'8" X 9'2"
TOTAL AREA	82.5 SQ.M / 888 SQ.FT

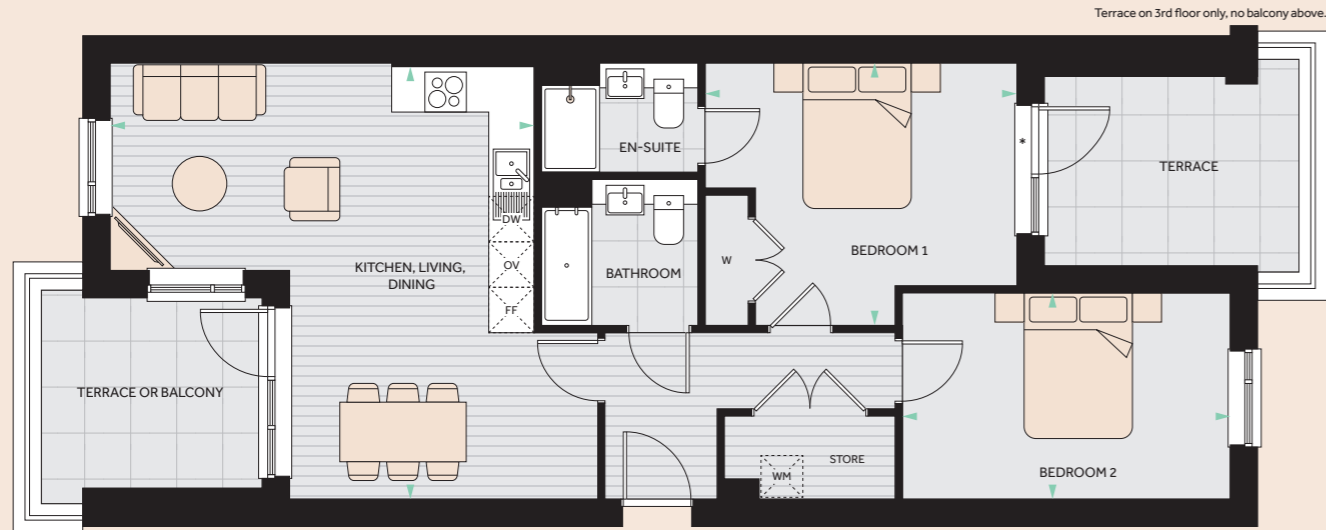
- TENTH
- NINTH
- EIGHTH
- SEVENTH
- SIXTH
- FIFTH
- FOURTH
- THIRD
- SECOND
- FIRST

KEY
DW- DISHWASHER | FF- FRIDGE FREEZER | OV- OVEN | W- WARDROBE | WM- WASHING MACHINE

Floorplans shown are indicative only. The kitchen layout and furniture positions are for indicative purposes only. All dimensions indicated are approximate and should not be relied upon for carpet sizes or items of furniture. The developer reserves the right to make changes to these plans prior to exchange of contracts. For exact plot specification, details of external and internal finishes, dimensions and floorplan differences, please speak to a member of our Sales Team for more details.



29



Terrace on 3rd floor level only. Balcony on 4th and 5th floor levels.

*Window at 4th and 5th floor levels.

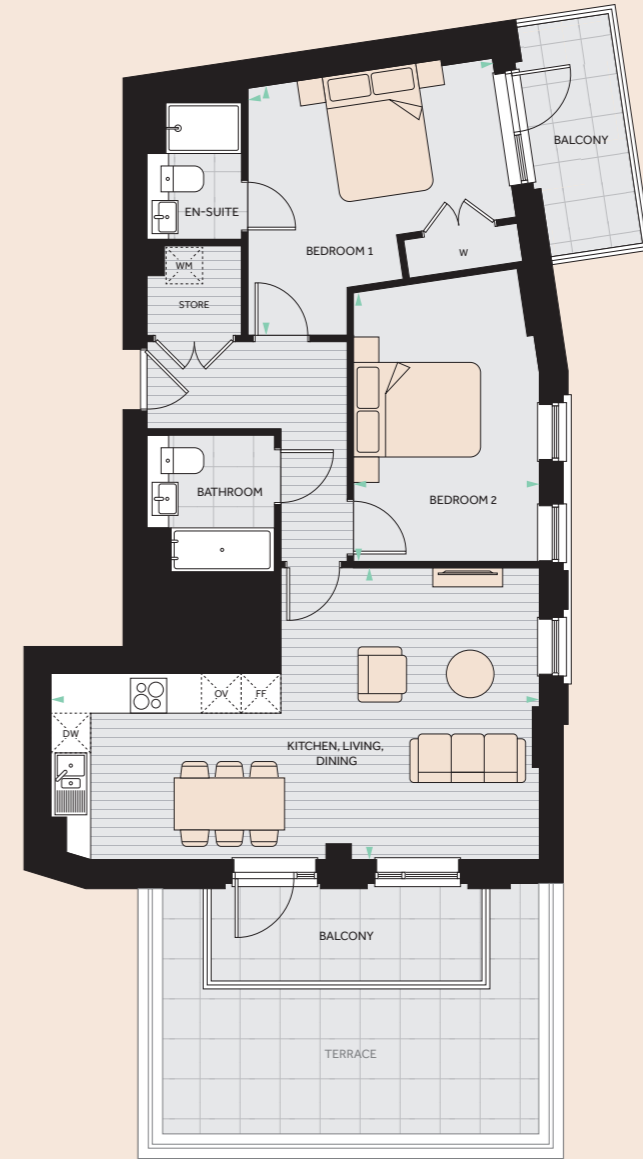
KITCHEN/LIVING/DINING AREA	5.93M X 5.82M / 19'6" X 19'1"
BEDROOM 1	4.30M X 3.60M / 14'1" X 11'10"
BEDROOM 2	4.50M X 2.84M / 14'9" X 9'4"
TOTAL AREA	74.5 SQ.M / 801 SQ.FT

- TENTH
- NINTH
- EIGHTH
- SEVENTH
- SIXTH
- FIFTH
- FOURTH
- THIRD
- SECOND
- FIRST

KEY
 DW- DISHWASHER | FF- FRIDGE FREEZER | OV- OVEN | W- WARDROBE | WM- WASHING MACHINE

Floorplans shown are indicative only. The kitchen layout and furniture positions are for indicative purposes only. All dimensions indicated are approximate and should not be relied upon for carpet sizes or items of furniture. The developer reserves the right to make changes to these plans prior to exchange of contracts. For exact plot specification, details of external and internal finishes, dimensions and floorplan differences, please speak to a member of our Sales Team for more details.

30



Terrace on 6th floor level only. Balcony on 7th-10th floor levels.

KITCHEN/LIVING/DINING AREA	7.64M X 4.59M / 25'1" X 15'1"
BEDROOM 1	3.90M X 3.86M / 12'10" X 12'8"
BEDROOM 2	4.21M X 2.97M / 13'10" X 9'7"
TOTAL AREA	76 SQ.M / 818 SQ.FT

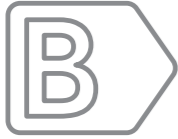
- TENTH
- NINTH
- EIGHTH
- SEVENTH
- SIXTH
- FIFTH
- FOURTH
- THIRD
- SECOND
- FIRST

KEY
 DW- DISHWASHER | FF- FRIDGE FREEZER | OV- OVEN | W- WARDROBE | WM- WASHING MACHINE

Floorplans shown are indicative only. The kitchen layout and furniture positions are for indicative purposes only. All dimensions indicated are approximate and should not be relied upon for carpet sizes or items of furniture. The developer reserves the right to make changes to these plans prior to exchange of contracts. For exact plot specification, details of external and internal finishes, dimensions and floorplan differences, please speak to a member of our Sales Team for more details.

Better for you, better for the planet.

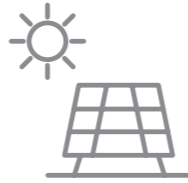
A new-build home at The Hue by FABRICA uses much less energy than a period home so is much friendlier to the environment.



EPC rating of B



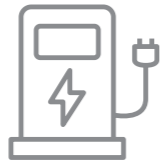
High level of insulation and air tightness



Photovoltaic panels on the roofs provide electricity to the common areas



Mechanical ventilation with heat recovery



3 electric charging points



174 secure bicycle spaces

SAVING MONEY THROUGH ENERGY-EFFICIENCY

ABOUT FABRICA

FABRICA is part of an award-winning property business, committed to creating meticulously designed, skillfully produced homes. From apartments of striking urban architecture to houses with a more rural, intimate charm, our aim is always the same: to create beautifully designed homes that are a real pleasure to live in. Our design ethos and commitment to sustainability mean that our homes are built in carefully considered locations and are sympathetic to the environment. Every project reflects our dedication to thoughtful design, sustainable living, and providing an outstanding experience for our customers.

People are at the heart of everything we do, and because we own and manage all our properties, our commitment to providing the best possible service for our customers never stops. Our estate management team is exceptional and has the awards to prove it. FABRICA is part of the A2Dominion Group. With over 70 years of experience and an asset base of £8.7 billion across almost 38,000 homes, in London and southern England, we are one of the UK's largest developers. Our A+ credit rating and pipeline of 6,000 homes, combined with our partnerships with world class architects and interior designers, ensures that we maintain our unique approach to house building.

We don't just build remarkable homes, we invest all profits into projects which benefit communities and create better ways to live. Pride in every detail is what we live by.

FABRICA

by A2Dominion

FABRICA
Head Office
113 Uxbridge Road
London
W5 5TL

FABRICA is delighted to be a registered developer with the New Homes Quality Board, an independent, not-for-profit organisation designed to oversee reform in the new homes sector. This means our buyers will benefit from enhanced protection when buying a new home as registered developers must adhere to the framework set out in the New Homes Quality Code. To find out more, visit: fabrica.co.uk/new-homes-guide/consumer-code



“Thank you A2Dominion for making me a homeowner, after years of paying hefty rents in London and dealing with countless problems with private landlords, they helped me a lot to get on the property ladder. Great location with excellent prices. Loving my new nest and I am very happy with management overall.”

A. Gul - Cavendish Gardens Resident



HOW TO FIND US

TRAIN

Just a 6 minute walk to Hounslow Central, you can easily access the Piccadilly Line, both west to Heathrow and east to Central London. However, you also have the option of South Western Rail via Hounslow station, getting you into Waterloo in 40 minutes.

FOOT

Hounslow station is just a 11 minute walk away. Exit the station and head towards Whitton Road. Follow the road and continue onto Bell Road. Follow Bell Road until you meet at Grove Road, you will see The Hue in front of you.

Photography: p11 Tom Wheatley, p20 Camila Aramayo, p23 Viola Favaretto.
Design: MWA.london

The information in this document has been prepared solely for the purpose of providing general information about The Hue. FABRICA by A2Dominion and its agents have taken care to ensure that the information is accurate at the time of its inclusion in this brochure, but does not guarantee the accuracy or completeness and shall not be liable for any loss or damage which may arise from reliance on the information.

All illustrations reflect the artists' interpretation of the project and do not take into account the neighbouring buildings, physical structures, streets and landscape. FABRICA reserves the right to make modifications to the overall plans, changes to architectural and interior features and finishes, brands, colours, materials, building design, specifications, ceiling heights, flooring patterns and floorplans without notification. Floorplates are for illustration of layouts only and are not to scale. Planting on the balconies and terraces are indicative only and does not form part of the standard specification.
© 2023 A2Dominion Housing Group Ltd

FABRICA by A2Dominion is a brand name used by companies within the A2Dominion Housing Group Ltd (an exempt charity registered under the Co-operative & Community Benefit Societies Act 2014 Soc.No. 28985R, HCA Reg. L4240)
Registered Office: 113 Uxbridge Road, Ealing, London, W5 5TL



FABRICA
by A2Dominion