



ROMAN FIELDS

Magnus Crescent, Banbury, Oxfordshire, OX16 1LQ

Tiber Way, Banbury, Oxfordshire, OX16 1LP

A brand-new development of 2- & 3-bedroom houses

Available through Shared Ownership

 ParadigmLiving



Prices
from
£115,500



£ Prices from **£115,500 (35% share)**

% Share available **35%-75%**

🏠 **2- & 3-bedroom houses**



Paradigm are pleased to offer these 2- & 3-bedroom houses, located in the historic market town of Banbury.

Roman Fields has excellent transport links, local amenities and number of schools close to the development.



ROMAN FIELDS KEY FEATURES

Bathroom suite and thermostatic shower

Carpet throughout living areas

Amtico flooring in kitchen, bathroom, downstairs toilet & en-suite (if applicable)

Gas central heating

2 allocated parking spaces

Fitted kitchen with integrated oven and hob

Integrated washing machine & fridge freezer

Integrated dishwasher (3 beds only)

These particulars do not constitute any part of an offer or contract. Any intended purchasers must satisfy themselves as to the correctness of each of the statements contained in these particulars. All floor layouts may be subject to changes. The dimensions given on the plan are subject to minor variations intended for guidance only and are not to be used for carpets, appliances or items of furniture.





2 Bedroom House

Plots 10, 13, & 14*

(* handed)

KITCHEN/DINING

10'9" x 15'8" 3.29m x 4.79m

LIVING ROOM

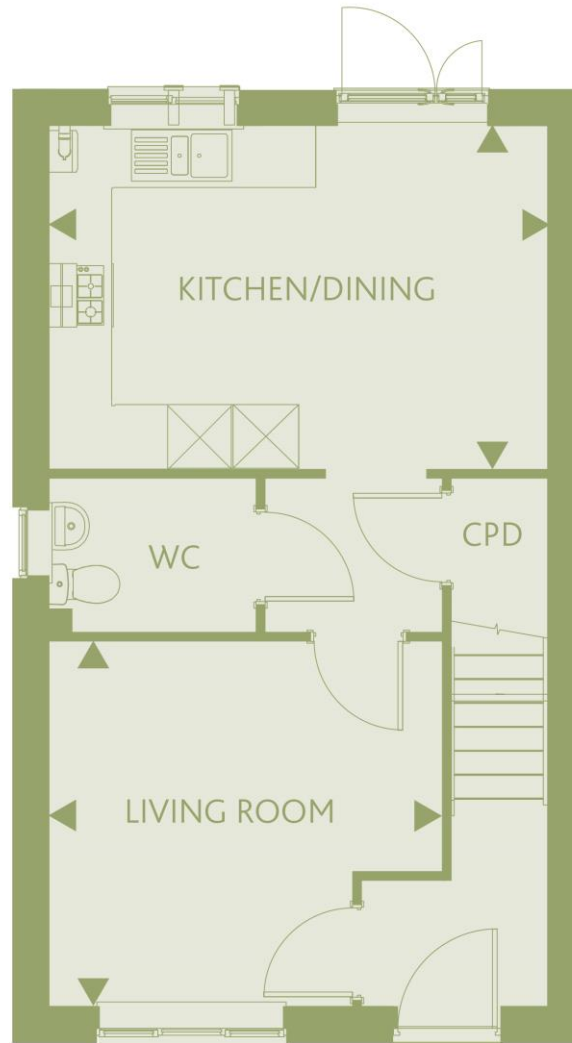
11'5" x 12'3" 3.49m x 3.75m

BEDROOM 1

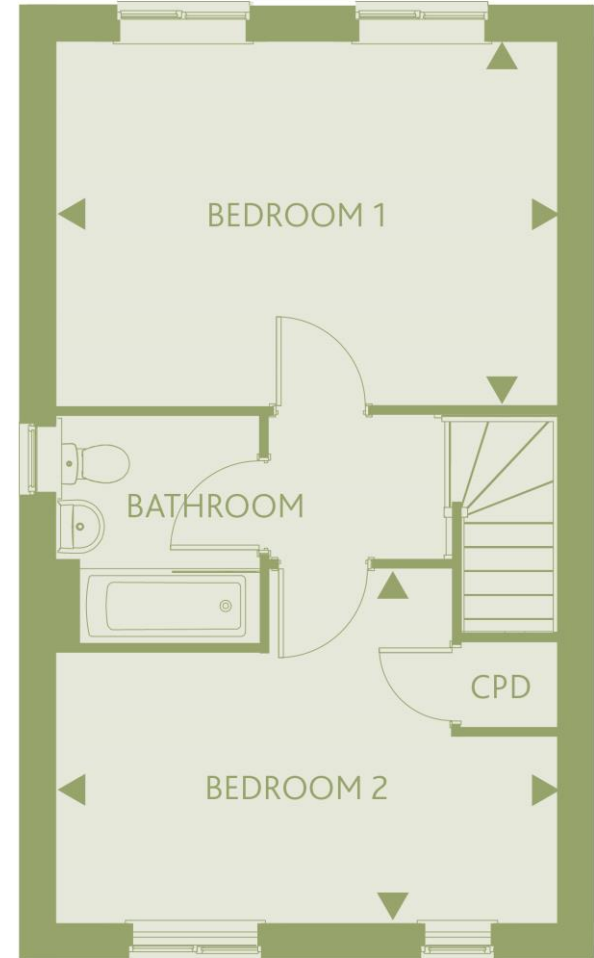
11'5" x 15'8" 3.48m x 4.79m

BEDROOM 2

8'5" x 15'8" 2.59m x 4.79m



GROUND FLOOR



FIRST FLOOR

These particulars do not constitute any part of an offer or contract. Any intended purchasers must satisfy themselves as to the correctness of each of the statements contained in these particulars. All floor layouts may be subject to changes. The dimensions given on the plan are subject to minor variations intended for guidance only and are not to be used for carpets, appliances or items of furniture.





3 Bedroom House

Plots 49*, 50 & 51

(* handed)

KITCHEN/DINING

12'0" x 17'2" 3.67m x 5.24m

LIVING ROOM

12'1" x 14'0" 3.70m x 4.27m

BEDROOM 1

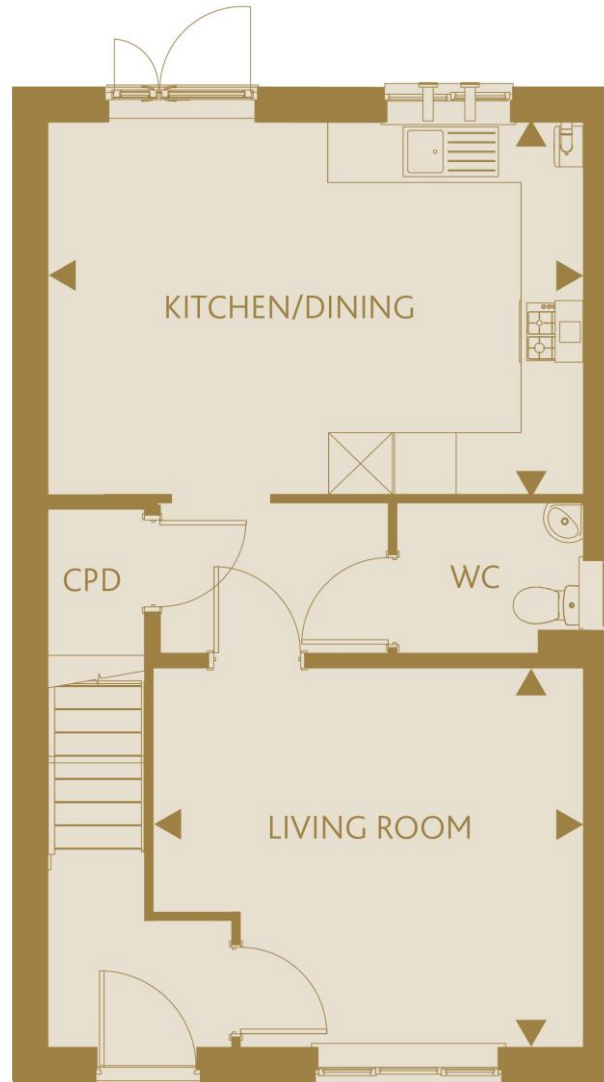
13'8" x 9'9" 4.19m x 2.99m

BEDROOM 2

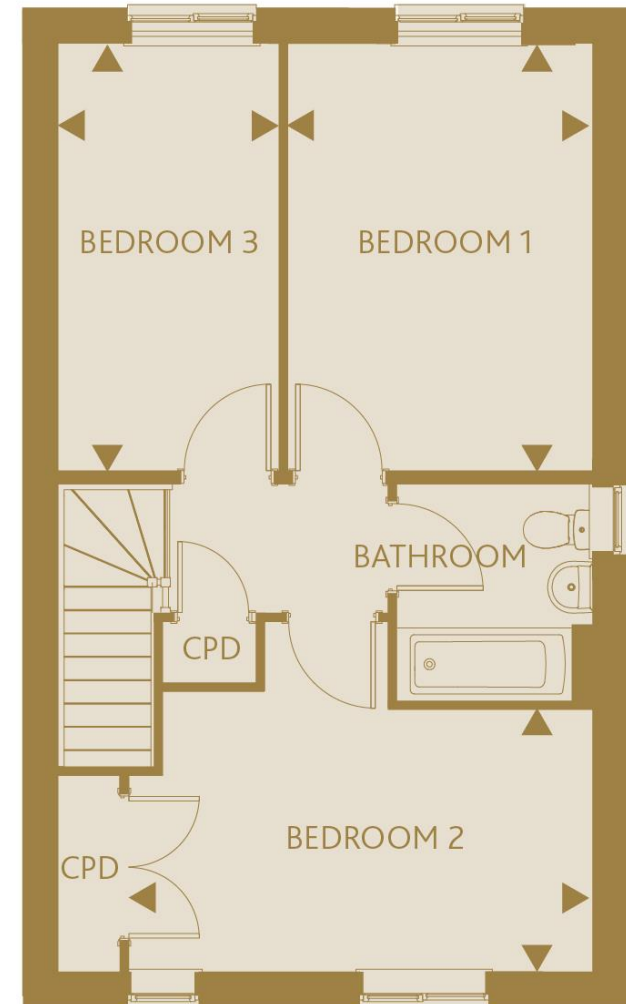
8'5" x 14'10" 2.59m x 4.53m

BEDROOM 3

13'8" x 7'1" 4.19m x 2.18m



GROUND FLOOR



FIRST FLOOR

These particulars do not constitute any part of an offer or contract. Any intended purchasers must satisfy themselves as to the correctness of each of the statements contained in these particulars. All floor layouts may be subject to changes. The dimensions given on the plan are subject to minor variations intended for guidance only and are not to be used for carpets, appliances or items of furniture.





SITE PLAN



These particulars do not constitute any part of an offer or contract. Any intended purchasers must satisfy themselves as to the correctness of each of the statements contained in these particulars. All floor layouts may be subject to changes. The dimensions given on the plan are subject to minor variations intended for guidance only and are not to be used for carpets, appliances or items of furniture.

////// ParadigmLiving

For more information

0300 303 8046

www.paradigmliving.co.uk

These particulars do not constitute any part of an offer or contract. Any intended purchasers must satisfy themselves as to the correctness of each of the statements contained in these particulars. All floor layouts maybe subject to changes. The dimensions given on the plan are subject to minor variations intended for guidance only and are not be used for carpets, appliances or items of furniture.

