

The Fern Orchard View

2-bedroom home, sleeps 4



2 |

1 |

1 |



Artist's impression

Key features

- Two double bedrooms
- Downstairs W.C.
- Three-piece bathroom suite
- Open plan kitchen and dining room
- Separate living room
- Driveway parking



The Fern

Available plots

Rent to Buy

15 or 53

Outright Sale

17, 63 or 65

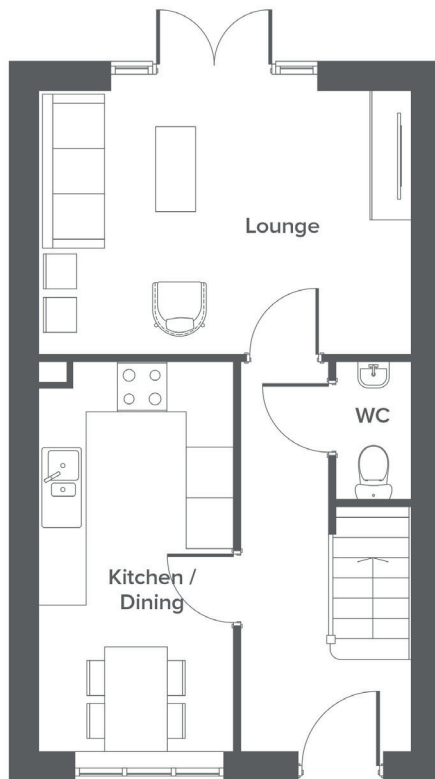
Hargreaves Road, Northwich, CW9 7BL

A selection of 2, 3 & 4-bedroom houses and one bedroom apartments

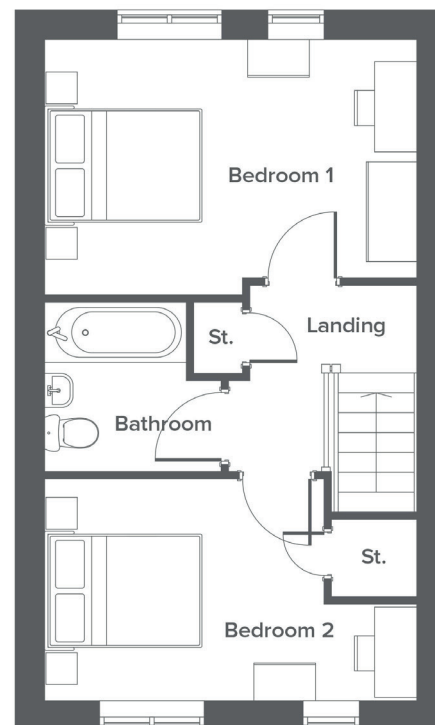
The Fern Orchard View

2-bedroom home, sleeps 4

Ground floor



First floor



Ground Floor	Metric	Imperial
Kitchen/Dining	2.4 x 4.7	7'10" x 15'7"
Lounge	4.5 x 3.2	14'11" x 10'6"
WC	0.9 x 1.6	3'1" x 5'6"

First Floor	Metric	Imperial
Bedroom 1	4.5 x 3.1	14'11" x 10'2"
Bedroom 2	4.5 x 2.7	14'11" x 8'11"
Bathroom	2.1 x 2.0	7'1" x 6'8"


Total size **70.88 m² / 763 ft²**

Get in touch

 **01606 218072**

 **yourhousinggroup.co.uk**

 **yhgtv**

 **@yourhousing**

 **yourhousinggroup**