

The Primrose Orchard View

4-bedroom home, sleeps 7



4 | 

2 | 

1 | 



Artist's impression

Key features

- Three double bedrooms
- Downstairs W.C.
- En-suite from master bedroom
- Open plan kitchen and dining room
- Separate living room
- Driveway parking



The Primrose
Available plots
Rent to Buy

356, 357

Shared Ownership

48, 49, 360, 361

Outright Sale

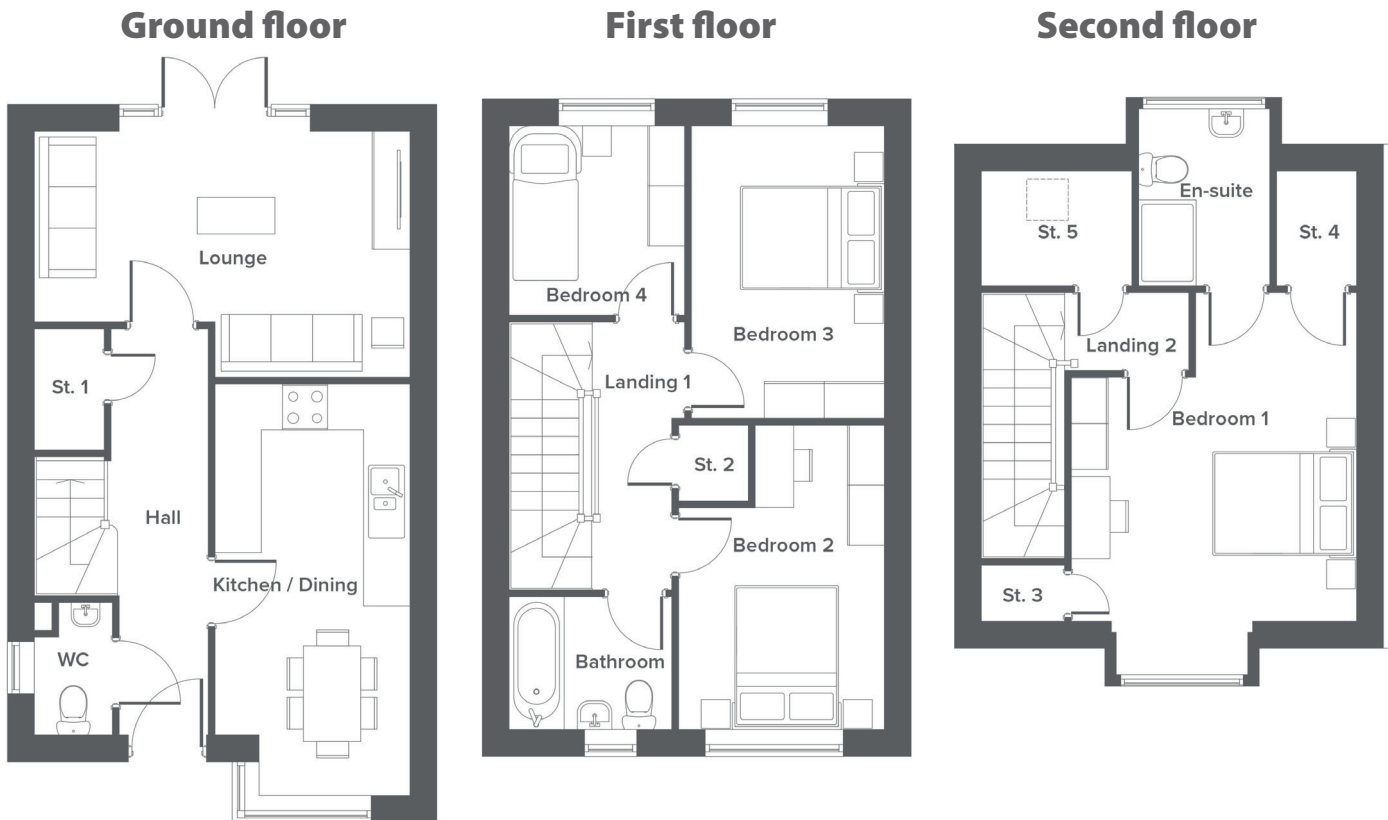
7, 8, 50, 51, 79, 80

Hargreaves Road, Northwich, CW9 7BL

A selection of 2, 3 & 4-bedroom houses and one bedroom apartments

The Primrose Orchard View

4-bedroom home, sleeps 7



Total size **112.69 m² / 1213 ft²**

Ground Floor	Metric	Imperial
Kitchen / Dining	2.5 x 5.4	8'5" x 17'8"
Lounge	4.9 x 3.2	16'3" x 10'7"
WC	1.0 x 1.7	3'6" x 5'9"

First Floor	Metric	Imperial
Bedroom 2	2.7 x 4.0	8'11" x 13'2"
Bedroom 3	2.5 x 3.8	8'5" x 12'7"
Bedroom 4	2.3 x 2.5	7'7" x 8'3"
Bathroom	2.1 x 1.7	7'1" x 5'9"


Second Floor	Metric	Imperial
Bedroom 1	3.7 x 4.3	12'3" x 14'2"
En-suite	1.7 x 2.2	5'7" x 7'6"

Get in touch

 **01606 218072**

 **yourhousinggroup.co.uk**

 **yhgtv**

 **@yourhousing**

 **yourhousinggroup**