

Wellington Paddocks

Deal

————— [lovelivinghomes](#) —————

Wellington Paddocks



A beautiful new development of three-bedroom homes situated in the small town of Walmer. Just a stone's throw away from the towering cliffs of Dover, enjoy the seaside air and countryside charm of Wellington Paddocks.

Wellington Paddocks Site Plan



NA30 (AS)
Plots 47, 76, 78 & 84

3 Bed House



84 sqm / 904 sqft



3 Bedrooms



1 Bathroom
1 WC



DIMENSIONS

KITCHEN

3437mm x 2754mm - 11'3" x 9'

LOUNGE/DINER

4787mm x 4404mm - 15'9" x 14'5"

BEDROOM 1

4787mm x 3112mm - 15'9" x 10'3"

BEDROOM 2

3553mm x 2255mm - 11' x 7'5"

BEDROOM 3

3352mm x 2444mm - 11' x 8'



Please note that all dimensions shown are for guidance only and maximum measurements are shown where necessary. Plans should not be used for furniture or other fittings. Furniture shown is for illustrative purposes only and not included. Individual units may vary according to location – please consult your sales advisor for more details.



NA30 (handed/OPP)
Plots 46, 77, 79 & 85

3 Bed House



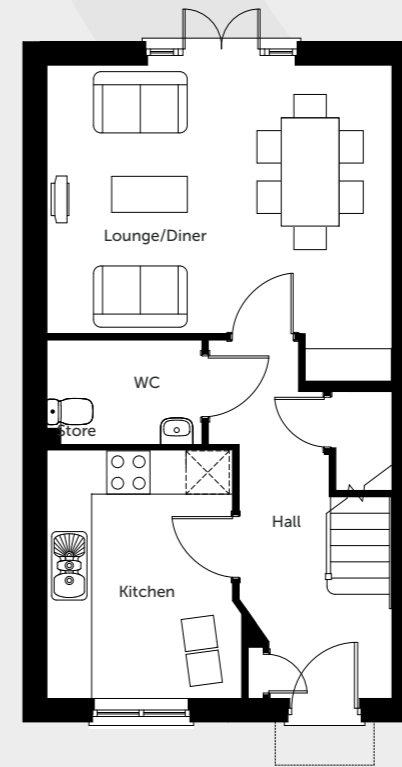
84 sqm / 904 sqft



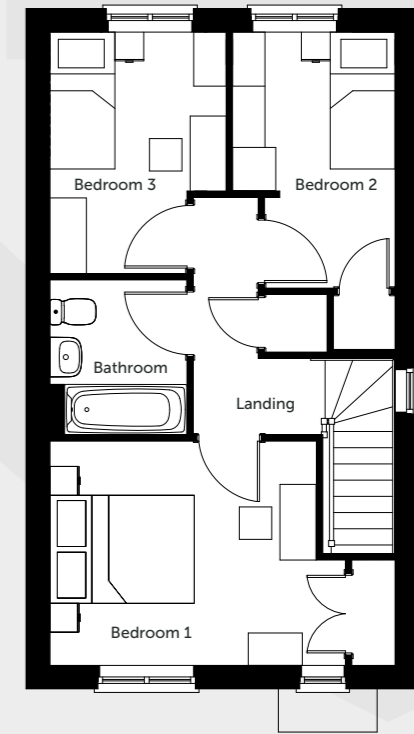
3 Bedrooms



1 Bathroom
 1 WC



Ground Floor



First Floor

DIMENSIONS

KITCHEN

3437mm x 2754mm - 11'3" x 9'

LOUNGE/DINER

4787mm x 4404mm - 15'9" x 14'5"

BEDROOM 1

4787mm x 3112mm - 15'9" x 10'3"

BEDROOM 2

3553mm x 2255mm - 11' x 7'5"

BEDROOM 3

3352mm x 2444mm - 11' x 8'

Please note that all dimensions shown are for guidance only and maximum measurements are shown where necessary. Plans should not be used for furniture or other fittings. Furniture shown is for illustrative purposes only and not included. Individual units may vary according to location – please consult your sales advisor for more details.

Specification

All our homes at Wellington Paddocks include generous specifications to make life as comfortable and convenient as can be.

KITCHEN

- Integrated Appliances will include washing machines, dishwasher, Fridge/freezer, oven and electric hob.
- Stainless steel splashback
- Contemporary Symphony kitchen New York style in dusk grey with Conway elm worktops
- Modern downlights
- Textured lime oak vinyl flooring across the kitchen

BATHROOM

- Chrome ladder towel rail
- Contemporary Porcelanosa Park Lineal Gris tiled bathroom suite with chrome fittings
- Light grey Disa Tex 979M Vinyl flooring for easy cleaning
- Shower over bath with glass screen

INTERIOR & DECORATION

- Gas boilers with radiators
- Double glazing
- White emulsion to walls and ceilings as a blank canvas ready for your creativity
- Aluminium Apollo plus grey carpets
- TV / broadband connection points
- Storage solutions

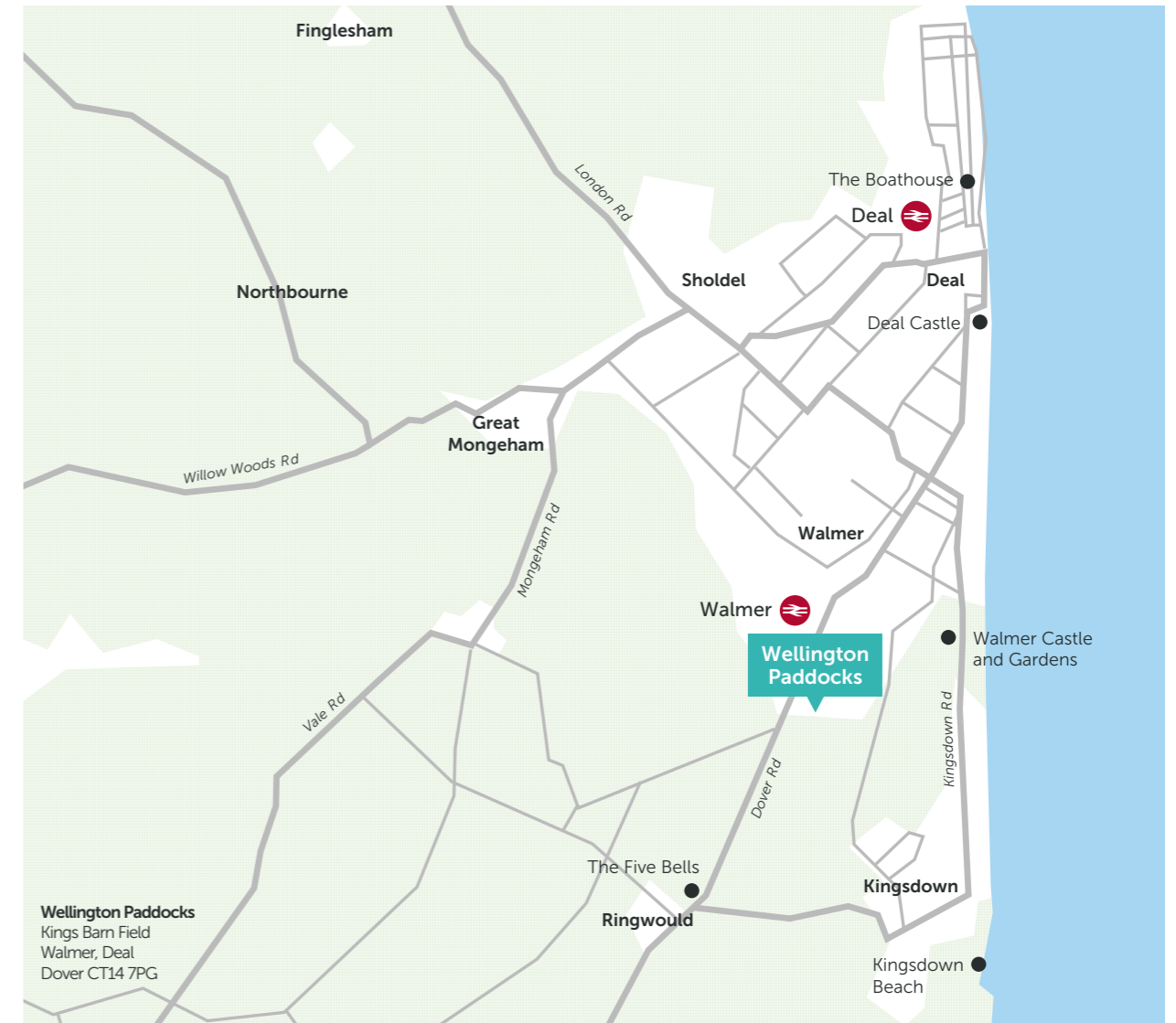
EXTERIOR

- Allocated parking
- Private turfed gardens
- External EV charging points
- Cycle storage sheds

WARRANTY

- All Love Living Homes are backed by a full 10-year NHBC warranty to provide peace of mind, and help you relax knowing that there's help if you need it!

Location and local amenities



Reserving your chosen plot



There's nothing more exciting than taking that first step onto the home ownership ladder, and at Love Living Homes, we aim to make that journey as straightforward and enjoyable as possible.

To register your interest or to find out more information, please email us at

buy@lovelivinghomes.co.uk

Monson House, Monson Way,
Tunbridge Wells, Kent TN1 1LQ
lovelivinghomes.co.uk





love livinghomes

Love Living Homes is the trading name of

