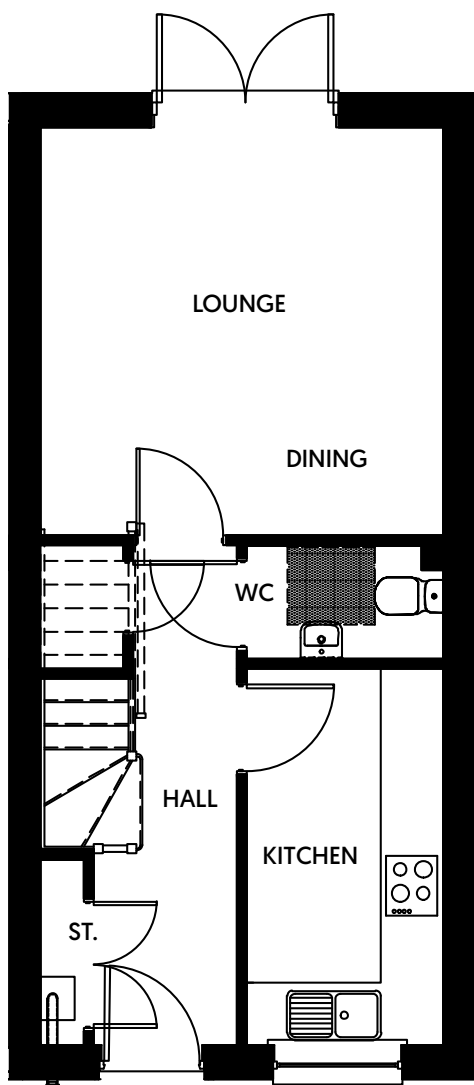


Queen's Meadow, Shavington

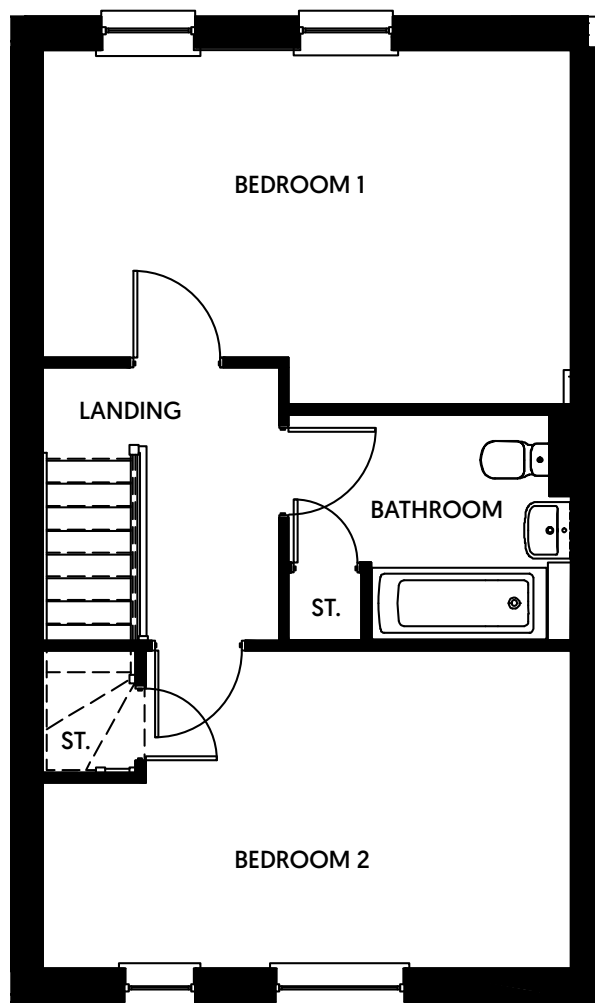


prospera
HOMES

The Cowley Floor Plan
2 bedrooms



Ground Floor



First Floor

Room	Dimensions
Kitchen	3655mm x 1927mm
Lounge/Dining	3964mm x 3947mm
W/C	2126 mm x 1090mm
Bedroom 1	2865mm x 5214mm
Bedroom 2	3088mm 5124mm
Bathroom	2202mm x 2929mm

Floor plans are for illustrative purposes only. Layouts/window locations will vary depending on orientation on the site. Purchasers should take their own measurements before ordering flooring, furniture and fittings.