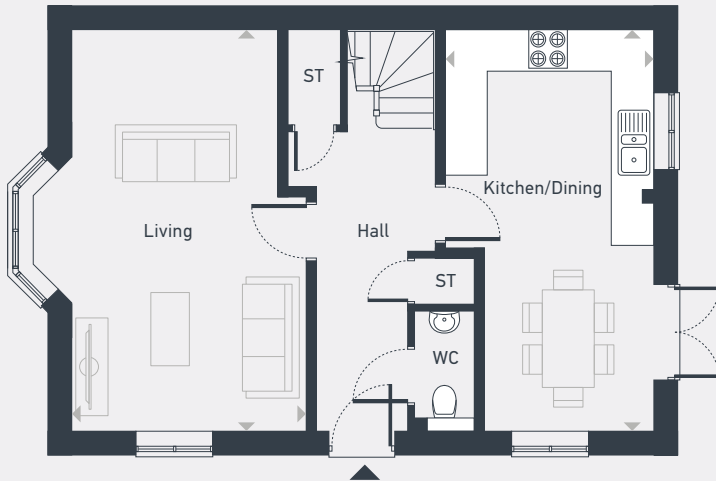


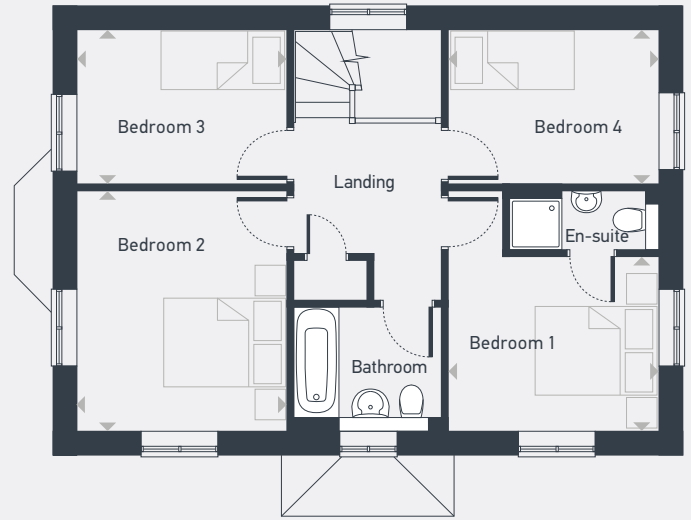


Plots as drawn: 61, 68 and 82
Handed: 143

1,194.9 sq. ft



GROUND FLOOR



FIRST FLOOR

ST: Store WC: Water Closet

DIMENSIONS	m	ft
Living	6.17m x 3.61m	20'2" x 11'10"
Kitchen/Dining	6.17m x 3.20m	20'2" x 10'5"
Bedroom 1	3.24m x 2.68m	10'7" x 8'9"
Bedroom 2	3.69m x 3.23m	12'1" x 10'7"
Bedroom 3	3.23m x 2.37m	10'7" x 7'9"
Bedroom 4	3.24m x 2.37m	10'7" x 7'9"



01865 575 465 | placesforpeople.co.uk/meadowbrook
High Street, Chalgrove, Oxford OX44 7AF