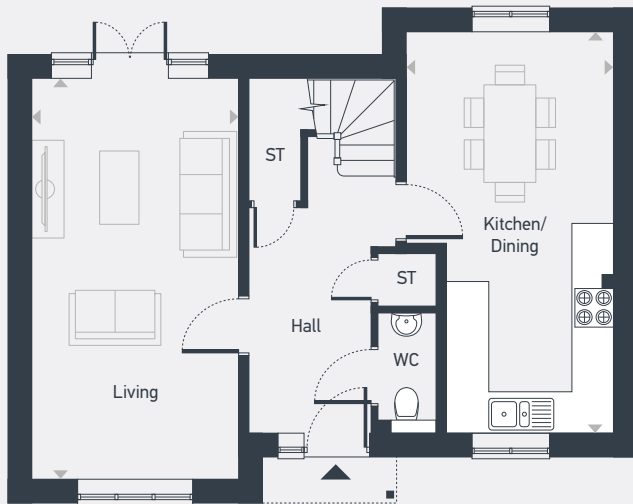


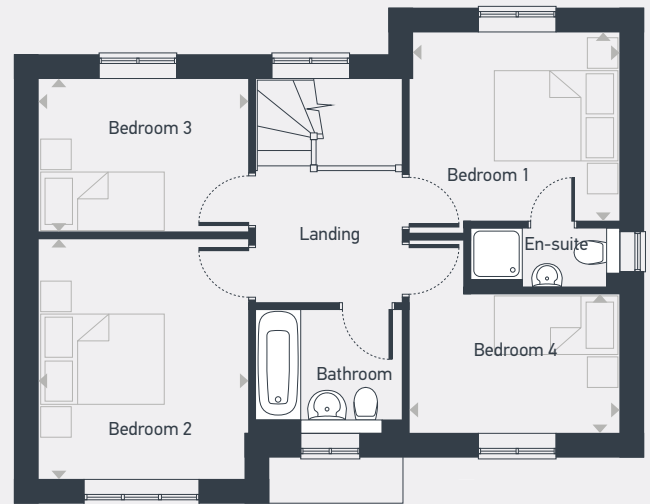


Plots as drawn: 145 and 146

1,145.5 sq. ft



GROUND FLOOR



FIRST FLOOR

ST: Store WC: Water Closet

DIMENSIONS	m	ft
Living	6.17m x 3.18m	20'2" x 10'5"
Kitchen/Dining	6.17m x 3.20m	20'2" x 10'5"
Bedroom 1	3.20m x 2.91m	10'5" x 9'6"
Bedroom 2	3.69m x 3.23m	12'1" x 10'7"
Bedroom 3	3.23m x 2.37m	10'7" x 7'9"
Bedroom 4	3.25m x 2.15m	10'7" x 7'0"



01865 575 465 | [placesforpeople.co.uk/meadowbrook](https://placesforpeople.co.uk/meadowbrook)  
High Street, Chalgrove, Oxford OX44 7AF