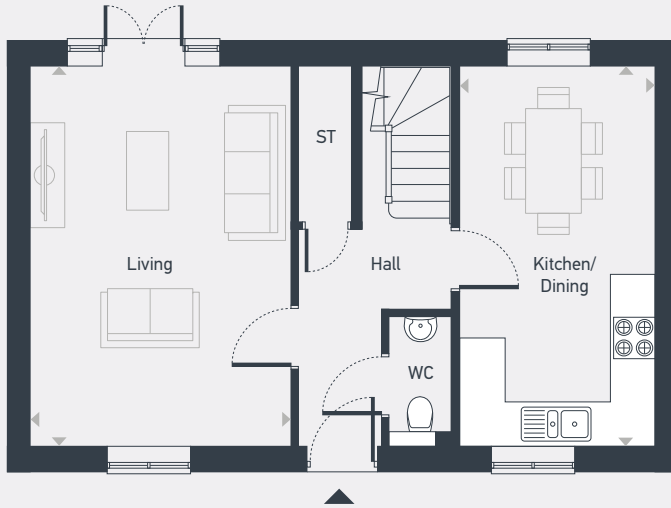


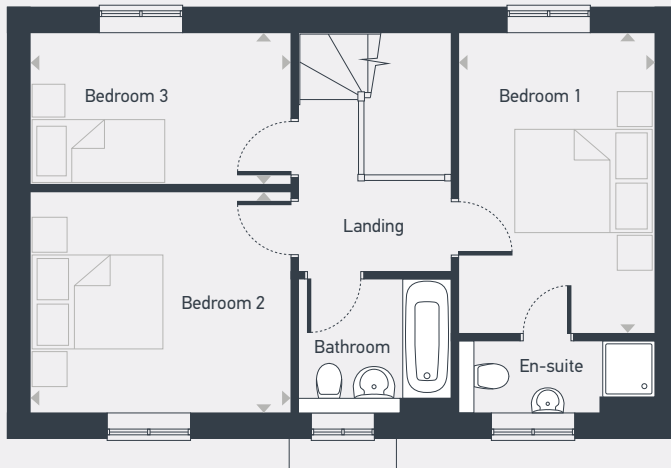


Plot as drawn: 114

1,043.2 sq. ft



GROUND FLOOR



FIRST FLOOR

ST: Store WC: Water Closet

DIMENSIONS	m	ft
Living	5.44m x 3.74m	17'8" x 12'2"
Kitchen/Dining	5.44m x 2.81m	17'8" x 9'2"
Bedroom 1	2.82m x 4.31m	9'2" x 14'1"
Bedroom 2	3.74m x 3.16m	12'3" x 10'4"
Bedroom 3	3.74m x 2.18m	12'3" x 7'1"



01865 575 465 | placesforpeople.co.uk/meadowbrook
High Street, Chalgrove, Oxford OX44 7AF