

The Woburn+ Charnock Grove

3-bedroom home, sleeps 5



3 | 

2 | 

1 | 



Artist's impression

Key features

- Set over three storeys
- Two double bedrooms
- En-suite from master bedroom
- Downstairs W.C.
- Open plan kitchen and dining room
- Separate study/ office
- Driveway parking

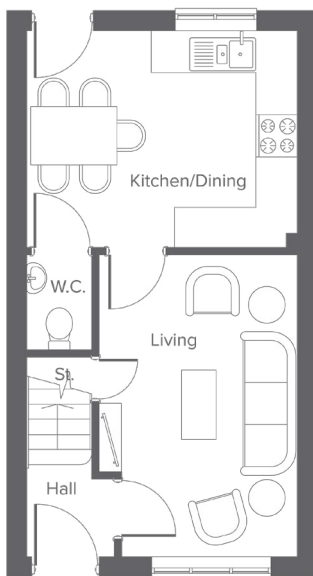


The Woburn+
Available plots
1 or 2

Charter Lane, Charnock Richard, PR7 5LZ
A collection of 76 beautifully designed new homes

The Woburn+ Charnock Grove

3-bedroom home, sleeps 5



Ground floor

Ground Floor	Metric	Imperial
Kitchen/Dining	4.09 x 3.26	13'5" x 10'8"
Living	3.00 x 4.55	9'11" x 14'11"
W.C.	0.98 x 1.44	3'2" x 4'8"



First floor

First Floor	Metric	Imperial
Bedroom 2	4.09 x 2.74	13'5" x 8'11"
Bedroom 3	2.04 x 2.97	6'8" x 9'8"
Bathroom	2.04 x 1.99	6'8" x 6'6"



Second floor

Second Floor	Metric	Imperial
Bedroom 1	4.09 x 5.87	13'5" x 19'3"
En-suite	1.21 x 2.25	3'11" x 7'4"

 Room for Air source heat pump/water tank

Total size **90.2m² / 971.4ft²**

Get in touch

 01257 650614

 [yourhousinggroup.co.uk](https://www.yourhousinggroup.co.uk)

 @yourhousing

 yourhousinggroup