

The Arundel+ Charnock Grove



4-bedroom home, sleeps 7

4 | 

2 | 

1 | 



Artist's impression

Key features

- Set over three storeys
- Three double bedrooms
- En-suite to master bedroom
- Downstairs W.C.
- Open plan kitchen and dining room
- Separate study/dressing room
- Driveway parking

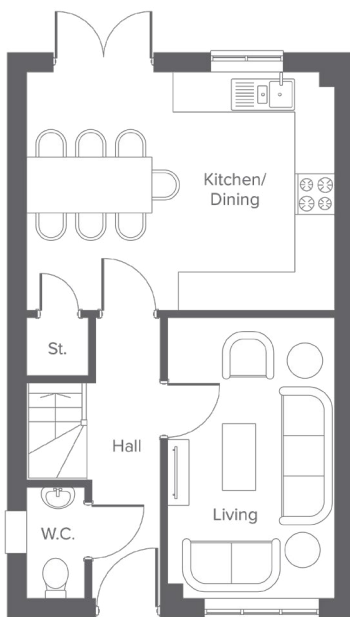


The Arundel+
Available plots
7, 8, 9 or 10

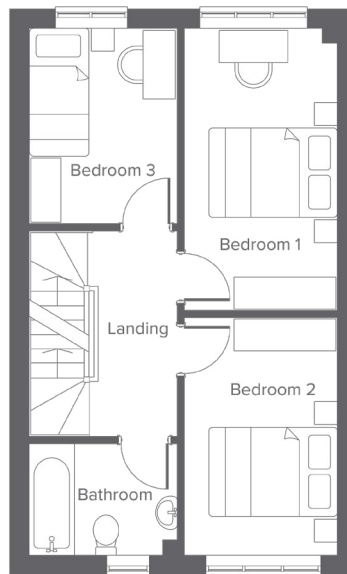
Charter Lane, Charnock Richard, PR7 5LZ
A collection of 76 beautifully designed new homes

The Arundel+ Charnock Grove

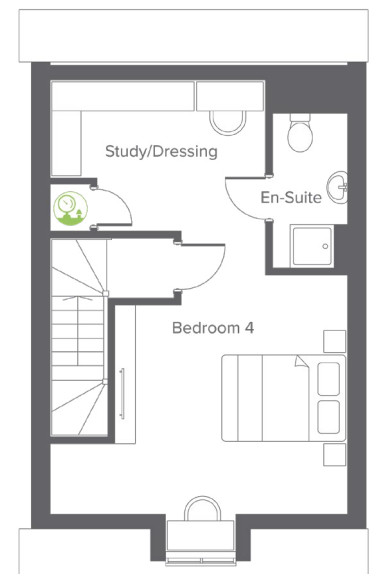
4-bedroom home, sleeps 7



Ground floor



First floor



Second floor

Ground Floor	Metric	Imperial
Kitchen/Dining	4.82 x 3.73	15'9" x 12'2"
Living	2.61 x 4.40	8'6" x 14'5"
W.C.	0.91 x 1.74	2'11" x 5'8"

First Floor	Metric	Imperial
Bedroom 1	2.39 x 4.42	7'10" x 14'6"
Bedroom 2	2.39 x 3.71	7'10" x 12'2"
Bedroom 3	2.32 x 3.05	7'7" x 10'0"
Bathroom	2.32 x 1.74	7'7" x 5'8"

Second Floor	Metric	Imperial
Bedroom 4	4.82 x 3.89	15'9" x 12'9"
Study / Dressing	3.49 x 2.53	11'5" x 8'3"
En-suite	1.21 x 2.51	3'11" x 8'2"

 Room for Air source heat pump/water tank

Total size **110.8m² / 1,192.6ft²**

Get in touch

 01257 650614

 [yourhousinggroup.co.uk](https://www.yourhousinggroup.co.uk)

 @yourhousing

 yourhousinggroup