

**Marble
Square**

**The Cornflower
3 bedroom house**

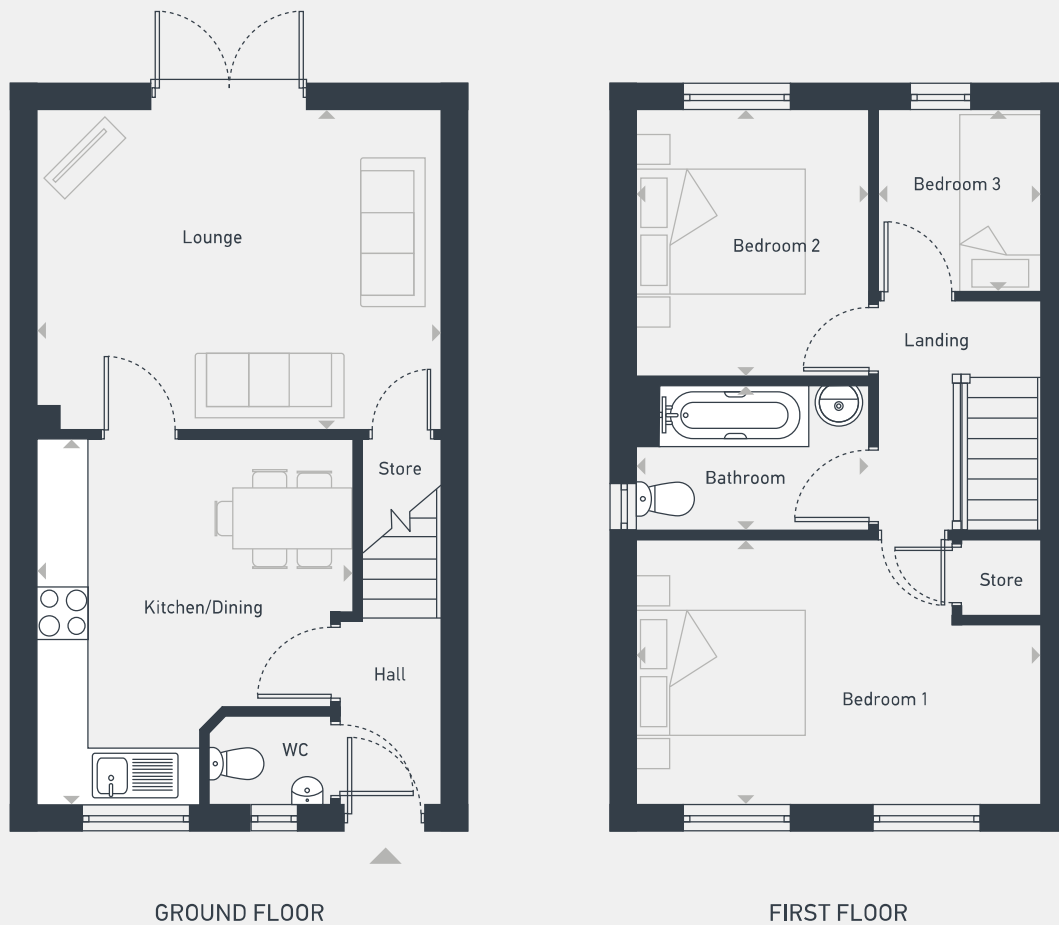


Marble Square

The Cornflower 3 bedroom house

Plots as drawn 36, 42
Handed 37, 43

70.98 sq m / 764 sq ft



DIMENSIONS	m	ft
Kitchen/Dining	4.10m x 3.54m	13'1" x 11'2"
Lounge	4.49m x 3.57m	14'9" x 11'2"

DIMENSIONS	m	ft
Bedroom 1	4.49m x 2.94m	14'9" x 9'8"
Bedroom 2	2.98m x 2.57m	9'9" x 8'5"
Bedroom 3	2.04m x 1.83m	6'8" x 6'0"
Bathroom	2.57m x 1.65m	8'5" x 5'5"



07973 813 331 | southyorkshire@lslnewhomes.co.uk | placesforpeople.co.uk/marblesquare

Marble Square, Nightingale Road, Osmaston, Derby DE24 8BG

Please note: All CGIs, layouts and floor plans, configurations, maps and information are intended for guidance only and accuracy of this information cannot be relied upon by prospective purchasers who must make their own enquiries to satisfy themselves by inspection or otherwise as to the correct detail. Sizes and dimensions approximate and subject to change.