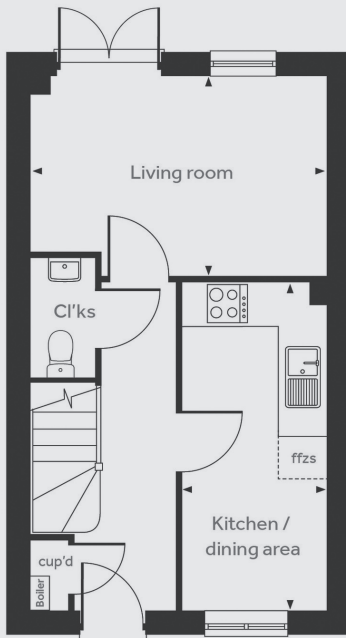
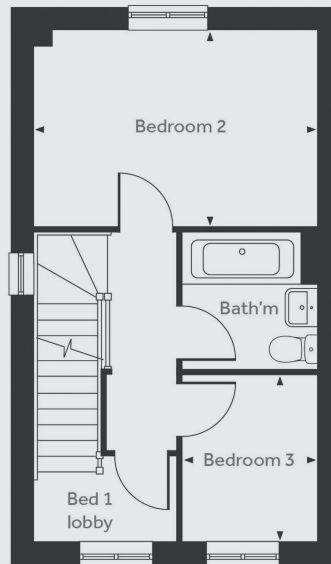


3-bedroom house

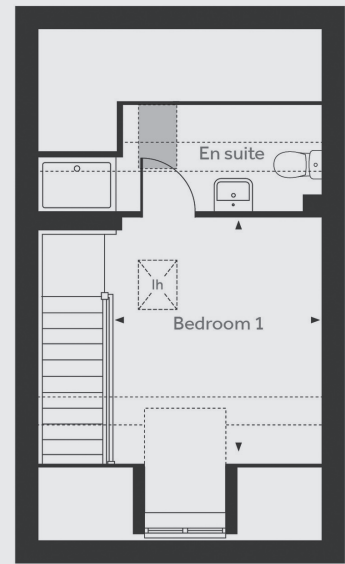
Kitchen/dining	4.60m x 2.18m
Living room	4.74m x 2.77m
Main bedroom	3.47m x 2.91m
Main bedroom en-suite	2.91m x 1.60m
Bedroom 2	4.74m x 2.86m
Bedroom 3	2.68m x 1.97m
Bathroom	2.01m x 1.97m
Total Area	866 sq ft



Ground floor



First floor



Second floor



Any floor plans are a general outline of the layout of the property for guidance only. All measurements are approximate and may vary and any intending purchasers should not rely on them as statements of fact or representations of fact but must satisfy themselves by inspection or otherwise as to their accuracy. Dimensions shown are not intended to be relied upon for installation of appliances or items of furniture or otherwise. CGI's and images are for illustrative purposes only. Specifications are subject to change. Images are indicative only and may be of previous developments. *Journey times and distances taken from google.com/ maps and are correct before going to print. All times and distances listed are approximate and may vary depending on time of travel.