



# CABLE WHARF

by

**love**livinghomes

**Maisonettes  
and Flats over Garages**

Northfleet, Gravesend DA11 9AA

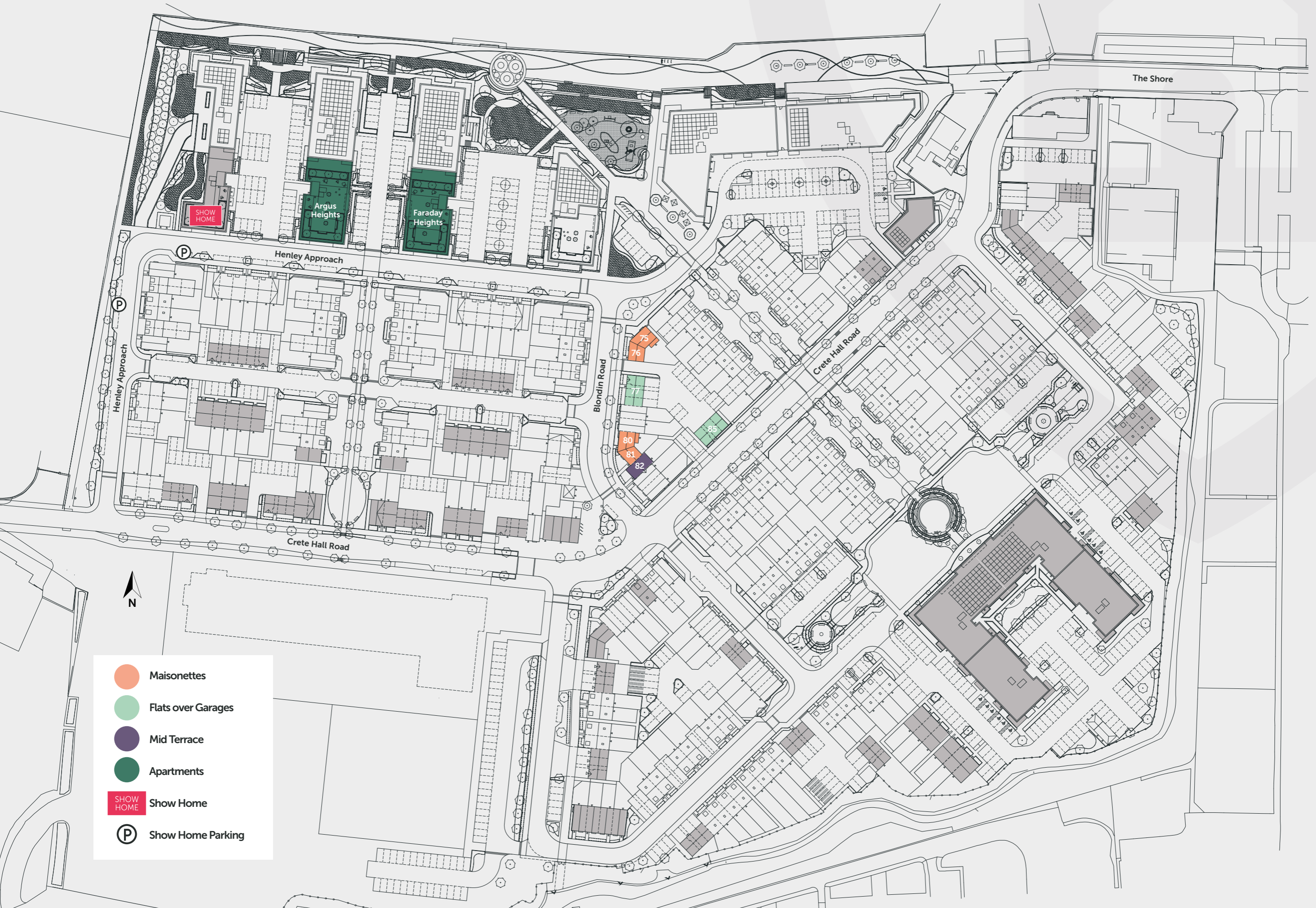








Artistic impression. Elevation treatments are subject to change.

A highly sought-after key commuter location.  
Enjoy fast access into London St Pancras in 23 minutes.



# Cable Wharf site plan



-  Maisonettes
-  Flats over Garages
-  Mid Terrace
-  Apartments
-  Show Home
-  Show Home Parking

Clove & Reef



# Clove

Maisonette



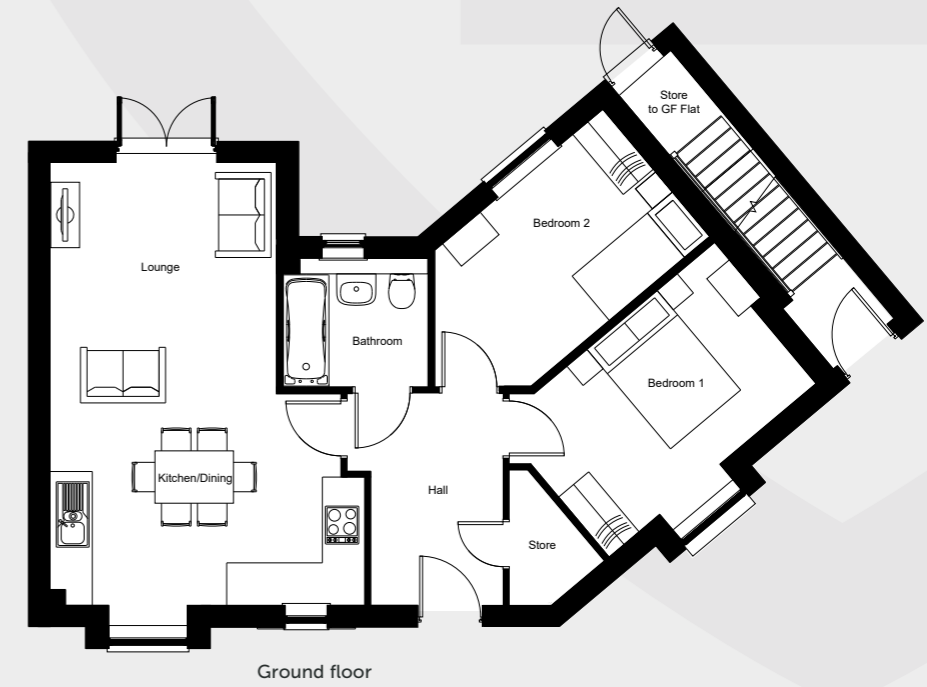
65.1 sqm / 700 sqft



2 Bedroom



1 Bathroom



Cleat



### DIMENSIONS

**LOUNGE / DINING / KITCHEN**  
6770mm x 4815mm - 22'2" x 15'9"

**BEDROOM 1**  
4329mm x 2650mm - 14'2" x 8'8"

**BEDROOM 2**  
4698mm x 2539mm - 15'5" x 8'4"

### PLOT

75

# Reef

Maisonette



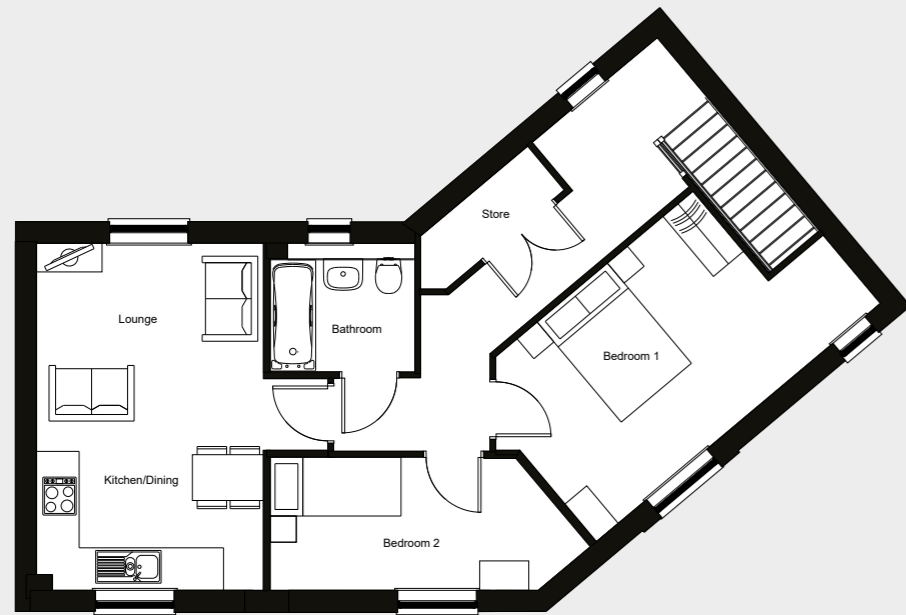
67.1 sqm / 722 sqft



2 Bedroom



1 Bathroom



First floor

## DIMENSIONS

**LOUNGE / DINING / KITCHEN**  
5307mm x 3465mm - 17'5" x 11'4"

**BEDROOM 1**  
5683mm x 3157mm - 18'8" x 10'4"

**BEDROOM 2**  
4891mm x 2021mm - 16' x 6'7"

## PLOT

76

# Carrick

Maisonette



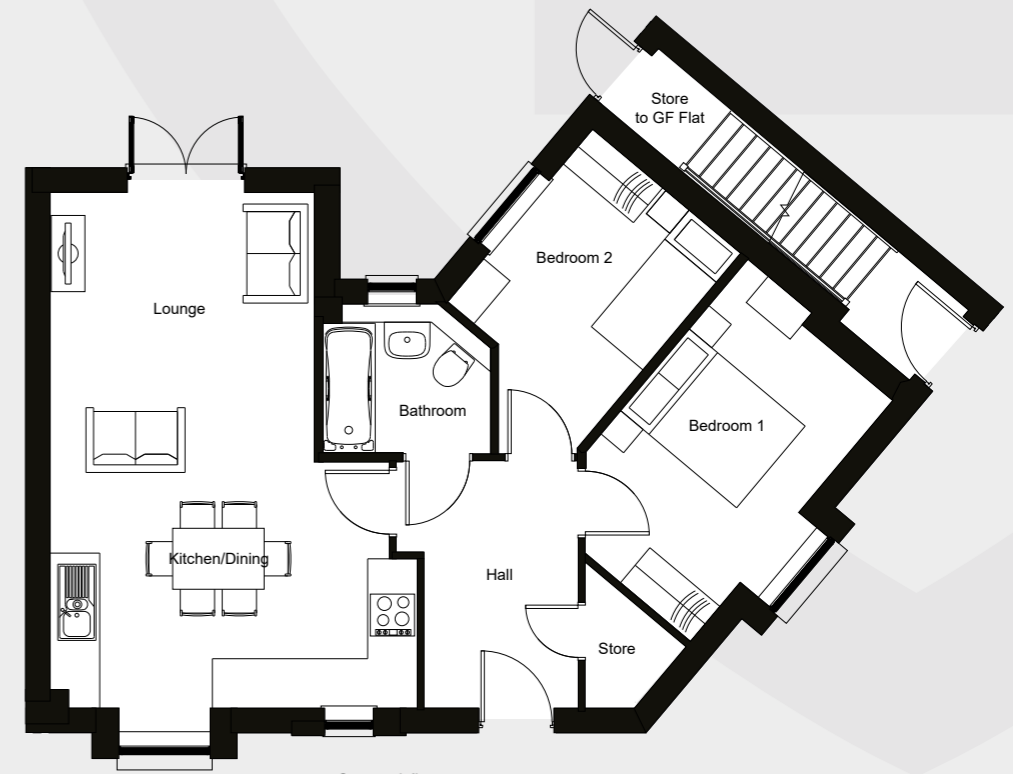
62.1 sqm / 668 sqft



2 Bedroom



1 Bathroom



Ground floor

## DIMENSIONS

**LOUNGE / DINING / KITCHEN**  
6770mm x 4815mm - 22'2" x 15'9"

**BEDROOM 1**  
4329mm x 2650mm - 14'2" x 8'8"

**BEDROOM 2**  
3072mm x 2539mm - 10'1" x 8'4"

## PLOT

80

# Bowline

Maisonette



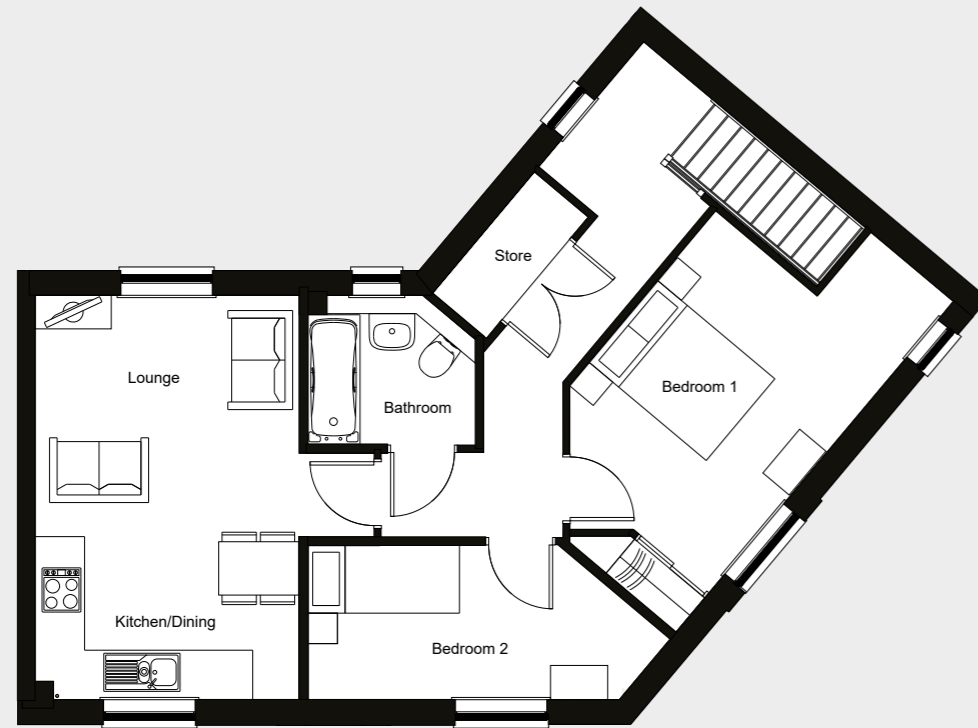
63.9 sqm / 688 sqft



2 Bedroom



1 Bathroom



First floor

## DIMENSIONS

### LOUNGE / DINING / KITCHEN

5307mm x 3465mm - 17'5" x 11'4"

### BEDROOM 1

5679mm x 3144mm - 18'7" x 10'4"

### BEDROOM 2

4776mm x 2021mm - 15'8" x 6'7"

## PLOT

81

# Cleat

Mid-terrace House



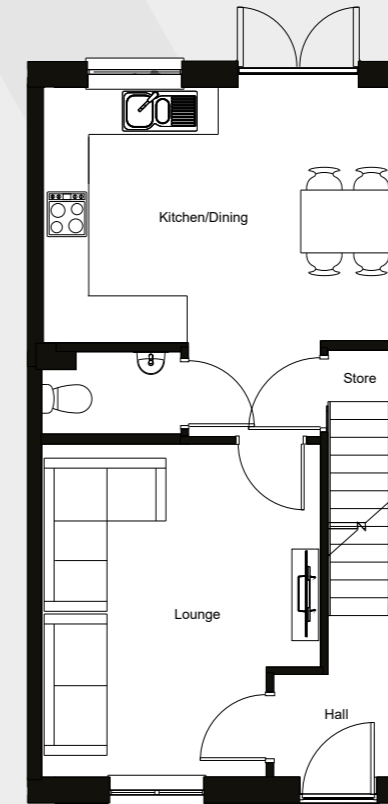
79.2 sqm / 852 sqft



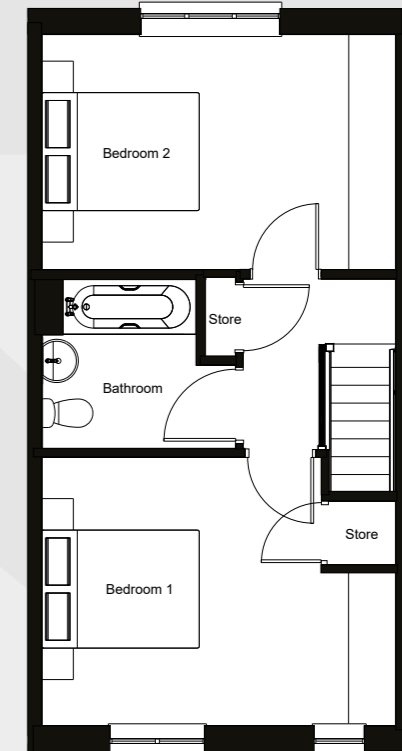
2 Bedroom



1 Bathroom



Ground floor



First floor

## DIMENSIONS

### LOUNGE

4297mm x 2899mm - 14'1" x 9'6"

### KITCHEN / DINING

4549mm x 4458mm - 14'11" x 14'8"

### BATHROOM

4549mm x 3453mm - 14'11" x 11'4"

### BEDROOM 1

4549mm x 3041mm - 14'11" x 10'0"

## PLOT

82

# Butterfly

Flat over Garage



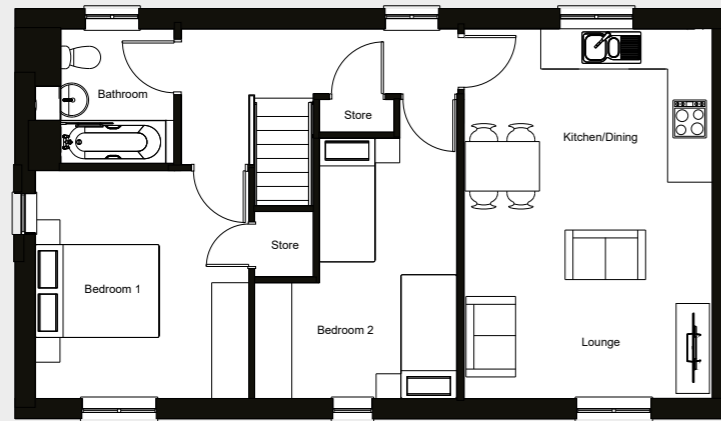
71.2 sqm / 766 sqft



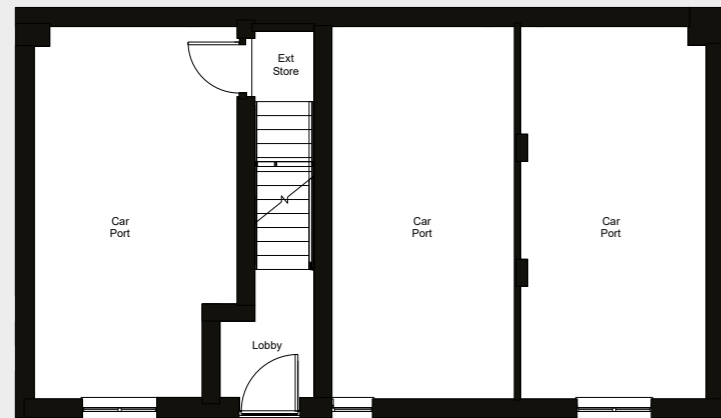
2 Bedroom



1 Bathroom



First floor



Ground floor



Computer generated image

## DIMENSIONS

### LOUNGE / DINING / KITCHEN

6023mm x 3941mm - 19'9" x 12'11"

### BEDROOM 1

3722mm x 3490mm - 12'2" x 11'5"

### BEDROOM 2

4248mm x 3292mm - 13'11" x 10'9"

## PLOT

77

85

# Specification

All our homes at Cable Wharf include generous specifications to make life as comfortable and convenient as can be.

## KITCHEN

- Contemporary Symphony grey kitchen units with pearl grey granite effect worktops
- Integrated washing machine and dishwasher
- Gas hobs and boilers
- Stainless steel splash back & canopy extractor fan
- Stainless steel sink and drainer

## BATHROOM

- Contemporary white bathroom suite with chrome fittings
- Porcelanosa Park gris tiles
- Shower over bath with glass screen
- Pedestal washbasin with mixer tap
- Chrome heated towel radiator

## INTERIOR & DECORATION

- Textured, light wood effect vinyl floorings to kitchen, living space & hallways
- Almond white emulsion to walls and ceilings and white satin to woodwork
- Durable grey carpets to all bedrooms
- Automatic room thermostat control
- TV / broadband connection point
- Storage solutions

## EXTERIOR

- Allocated parking
- Riverfront development

## WARRANTY

- All Love Living Homes are backed by a full 10-year NHBC warranty to provide peace of mind, and help you relax knowing that there's help if you need it!




Computer generated image

## Reserving your chosen plot

There's nothing more exciting than taking that first step onto the home ownership ladder. With generous specifications, make life comfortable and convenient in the beautiful Gravesham area. Love your new home at Cable Wharf with Love Living Homes.

Viewings to the show home are by appointment only. To book yours or find out more information, please contact us:

 [buy@lovelivinghomes.co.uk](mailto:buy@lovelivinghomes.co.uk)  
07340 361424



Monson House, Monson Way,  
Tunbridge Wells, Kent TN1 1LQ  
[lovelivinghomes.co.uk](http://lovelivinghomes.co.uk)

