



HOOK NORTON

STOUR VIEW, SIBFORD FERRIS, BANBURY, OXFORDSHIRE,
OX15 5FW

A brand-new development of 2- & 3-bedroom houses

Available through Shared Ownership

 ParadigmLiving



Prices
from
£138,000

£ Prices from **£138,000 (40% share)**

% Share available **40%-75%**

🏠 **2- & 3-bedroom houses**



Paradigm are pleased to offer these 2- & 3- bedroom houses, located in the picturesque village of Sibford Ferris.

Hook Norton is within easy reach of essential amenities and less than 8 miles from Banbury.



HOOK NORTON KEY FEATURES

Bathroom suite and thermostatic shower

Carpet throughout living areas

Ceramic tiling in kitchen, bathroom & downstairs toilet

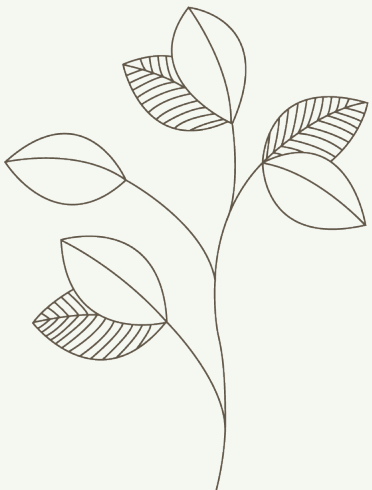
Air source heat pumps

Allocated parking

Fitted kitchen with integrated oven and electric hob

Integrated washing machine, fridge freezer and dishwasher

These particulars do not constitute any part of an offer or contract. Any intended purchasers must satisfy themselves as to the correctness of each of the statements contained in these particulars. All floor layouts maybe subject to changes. The dimensions given on the plan are subject to minor variations intended for guidance only and are not to be used for carpets, appliances or items of furniture.





Property Type Plots 7 & 8

KITCHEN

10'0" x 7'9" 3.06m x 2.38m

LIVING ROOM

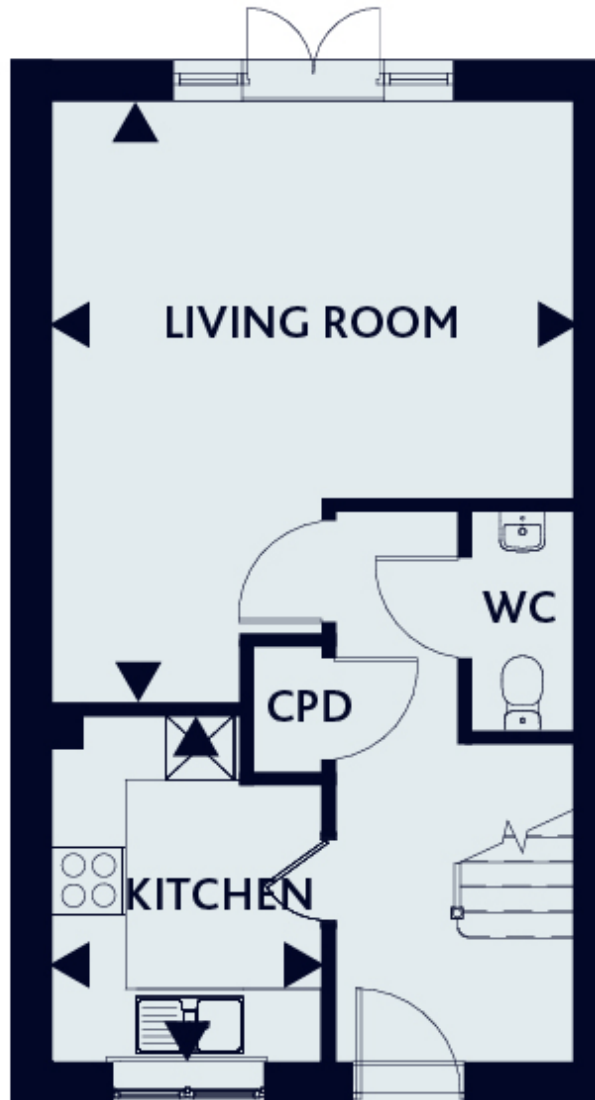
17'7" x 15'2" 5.33m x 4.62m

BEDROOM 1

9'3" x 15'2" 2.82m x 4.62m

BEDROOM 2

9'0" x 15'2" 2.75m x 4.62m



GROUND FLOOR



FIRST FLOOR

These particulars do not constitute any part of an offer or contract. Any intended purchasers must satisfy themselves as to the correctness of each of the statements contained in these particulars. All floor layouts may be subject to changes. The dimensions given on the plan are subject to minor variations intended for guidance only and are not to be used for carpets, appliances or items of furniture.





Property Type

Plot 9

KITCHEN

12'3" x 9'8" 3.74m x 2.96m

LIVING ROOM

15'6" x 18'9" 4.73m x 5.72m

BEDROOM 1

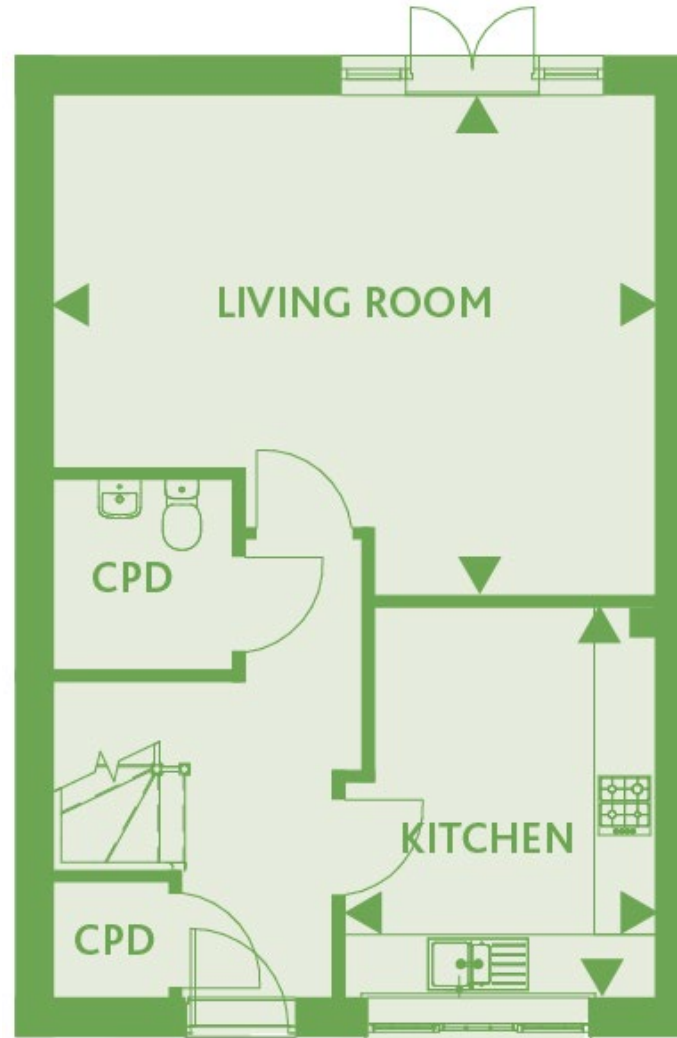
9'2" x 18'9" 2.78m x 5.72m

BEDROOM 2

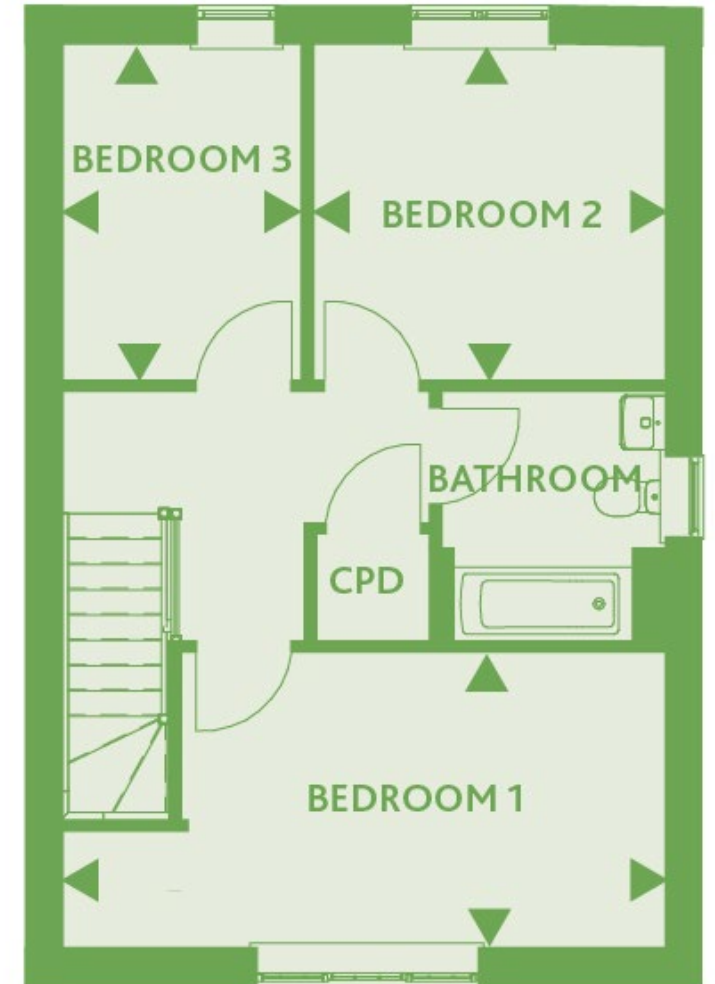
10'5" x 10'11" 3.16m x 3.32m

BEDROOM 3

10'4" x 7'6" 3.16m x 2.28m



GROUND FLOOR



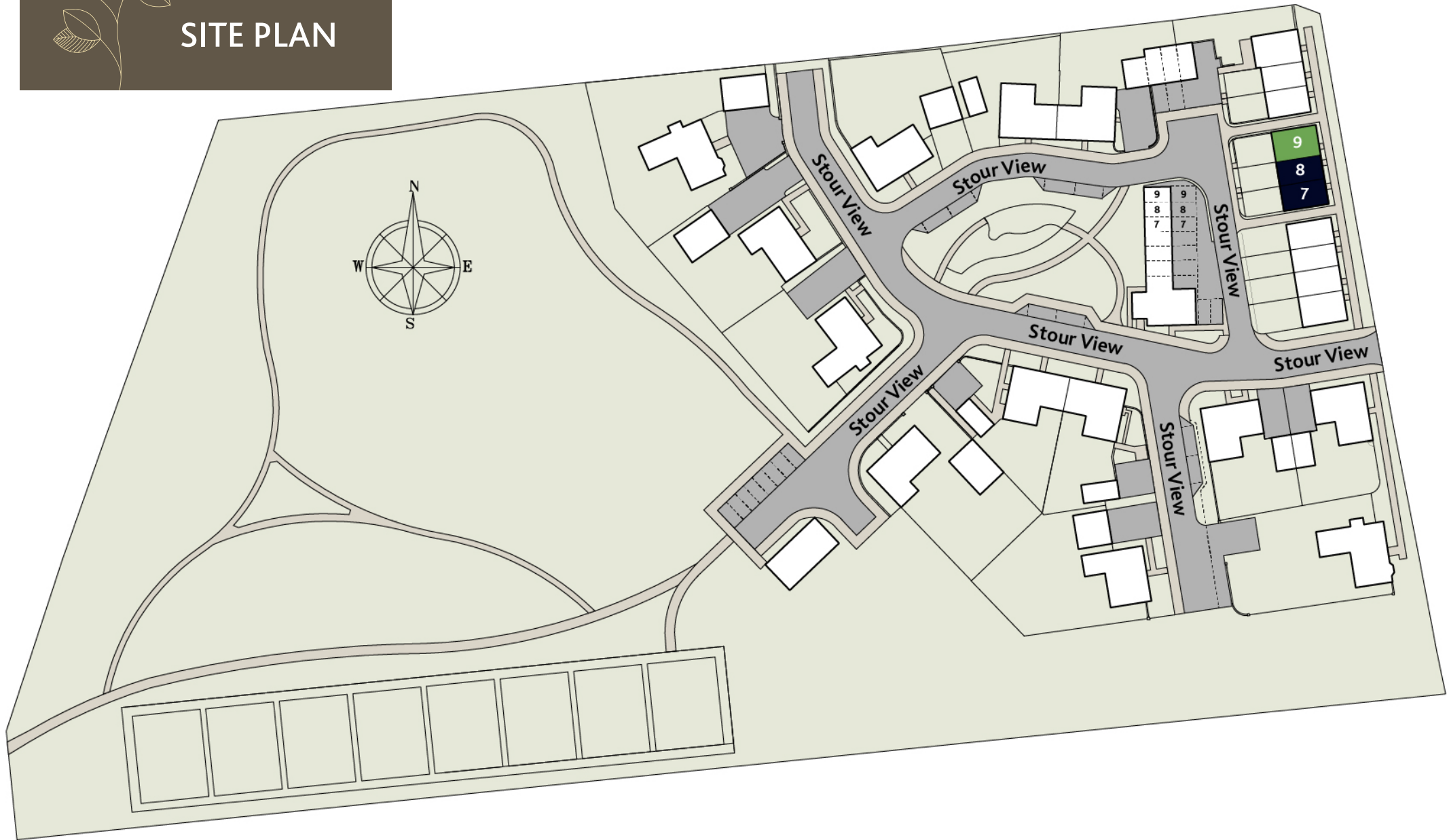
FIRST FLOOR

These particulars do not constitute any part of an offer or contract. Any intended purchasers must satisfy themselves as to the correctness of each of the statements contained in these particulars. All floor layouts may be subject to changes. The dimensions given on the plan are subject to minor variations intended for guidance only and are not to be used for carpets, appliances or items of furniture.





SITE PLAN



These particulars do not constitute any part of an offer or contract. Any intended purchasers must satisfy themselves as to the correctness of each of the statements contained in these particulars. All floor layouts may be subject to changes. The dimensions given on the plan are subject to minor variations intended for guidance only and are not to be used for carpets, appliances or items of furniture.

////// ParadigmLiving

For more information

0300 303 8046

www.paradigmliving.co.uk

These particulars do not constitute any part of an offer or contract. Any intended purchasers must satisfy themselves as to the correctness of each of the statements contained in these particulars. All floor layouts maybe subject to changes. The dimensions given on the plan are subject to minor variations intended for guidance only and are not be used for carpets, appliances or items of furniture.

