

Liberty Meadows

The Chestnut 4 bedroom home



Liberty Meadows

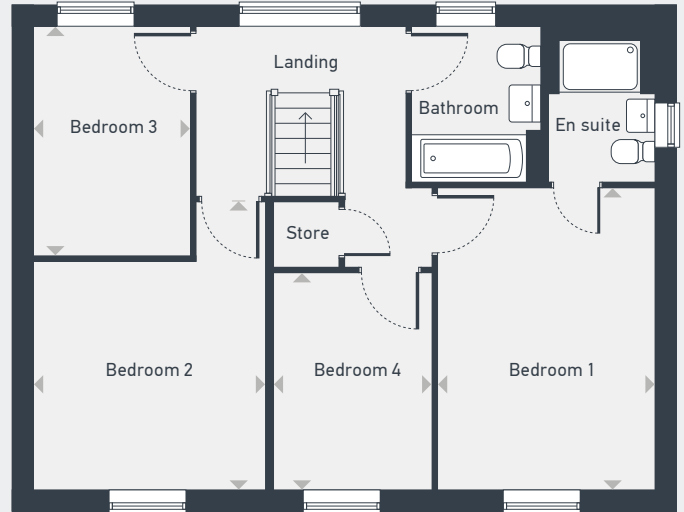
The Chestnut 4 bedroom home

Plots 54, 73 & 258

129.69 sq m / 1,396 sq ft



GROUND FLOOR



FIRST FLOOR

GROUND FLOOR	m	ft
Living Room	5.01m x 3.45m	16'5" x 11'4"
Family/Dining/Kitchen	6.92m x 4.64m	22'9" x 15'3"
Study	3.45m x 1.85m	11'4" x 6'1"

FIRST FLOOR	m	ft
Bedroom 1	4.51m x 3.28m	14'10" x 10'9"
Bedroom 2	3.48m x 3.40m	11'5" x 11'5"
Bedroom 3	3.46m x 2.34m	11'4" x 7'8"
Bedroom 4	3.24m x 2.34m	10'8" x 7'8"



Liberty Meadows, Marshfoot Lane, Hailsham, East Sussex , BN27 2RE

Please note: All layouts and floor plans, configurations, maps and information are intended for guidance only and accuracy of this information cannot be relied upon by prospective purchasers who must make their own enquiries to satisfy themselves by inspection or otherwise as to the correct detail. Sizes and dimensions approximate and subject to change.