

# Plots: 319, 321, 323, 329, 331, 333, 473\*, 474\*, 475, 476\*, 477, 478\*, 479, 480\*, 482, 483\*, 484 & 485\*

2 bedroom apartment

Tenure: Shared Ownership

**Note: Information about external finishes and window styles can be obtained from your sales consultant**

## Floorplan key

- S Storage space
- W Wardrobe

The floorplans are intended to give a general indication of the proposed floorplan layout. They are not drawn to scale and are not intended to form part of any offer, warranty or representation. Measurements are approximate and are given as a guide and as such must not be relied on as a statement or representation of fact. Do not use these measurements for carpets, appliance spaces or items of furniture. Kitchen, bathroom and utility layouts and door swings may differ to build and specific plot sizes and layouts may vary within the same unit type. Hyde reserves the right to make changes to these plans prior to exchange of contracts. For further information regarding specific individual plots, please ask your Sales Consultant.

\*Handed plot is mirrored

†Top window in bedroom only to plots 323, 333, 473, 474, 475, 477, 478, 479, 482, 483 & 484

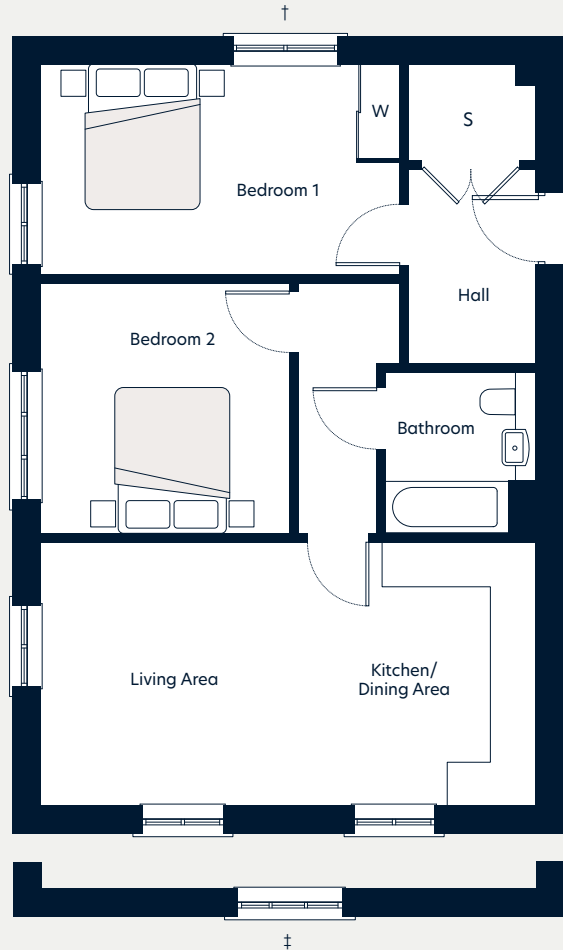
‡Single window in living room only to plots 473, 474, 475, 476, 477, 478, 479, 480, 482, 483, 484 & 485

- Burgess House:  
Ground floor - 319  
First floor - 321  
Second floor - 323

- Glynn Court:  
Ground floor - 473, 474  
First floor - 477, 478  
Second floor - 482, 483

- Newman House:  
Ground floor - 329  
First floor - 331  
Second floor - 333

- Driver Court:  
Ground floor - 475, 476  
First floor - 479, 480  
Second floor - 484, 485



Computer generated streetscene, indicative only



Dimensions	m	ft
Kitchen	3.62 x 2.10	11'11" x 6'11"
Living/Dining Room	4.73 x 3.62	15'7" x 11'11"
Bedroom 1	4.97 x 2.89	16'4" x 9'6"
Bedroom 2	3.46 x 3.44	11'4" x 11'3"
Gross Internal Area	70.1m <sup>2</sup>	754ft <sup>2</sup>



# Plots: 423, 424, 427\*, 428, 429, 434\*, 435, 436, 439\*, 489, 490, 493\*, 494, 495, 500\*, 501, 502 & 505\*

2 bedroom apartment

Tenure: Shared Ownership

**Note: Information about external finishes and window styles can be obtained from your sales consultant**

## Floorplan key

- S Storage space
- W Wardrobe

The floorplans are intended to give a general indication of the proposed floorplan layout. They are not drawn to scale and are not intended to form part of any offer, warranty or representation. Measurements are approximate and are given as a guide and as such must not be relied on as a statement or representation of fact. Do not use these measurements for carpets, appliance spaces or items of furniture. Kitchen, bathroom and utility layouts and door swings may differ to build and specific plot sizes and layouts may vary within the same unit type. Hyde reserves the right to make changes to these plans prior to exchange of contracts. For further information regarding specific individual plots, please ask your Sales Consultant.

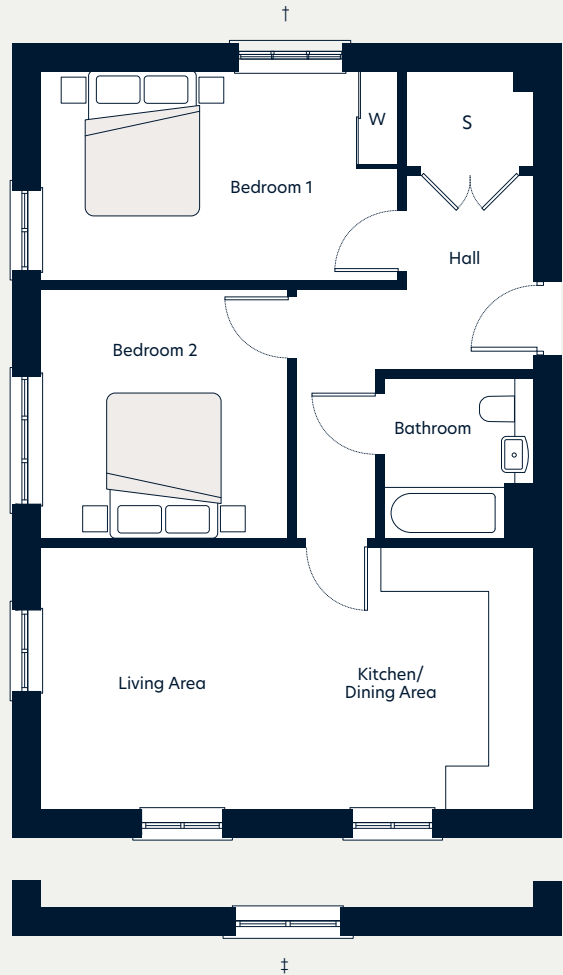
\*Floorplan is mirrored

†Top window in bedroom only to plots 423, 427, 428, 434, 435, 439, 489, 493, 494, 500, 501 & 505

‡Single window in living room only to plots 424, 427, 429, 434, 436, 439, 490, 493, 495, 500, 502 & 505

- Paulsen Lodge:  
Ground floor - 423, 424, 427  
First floor - 428, 429, 434  
Second floor - 435, 436, 439

- Rogers Court:  
Ground floor - 489, 490, 493  
First floor - 494, 495, 500  
Second floor - 501, 502, 505



Computer generated streetscene, indicative only



Dimensions	m	ft
Kitchen	3.62 x 2.10	11'11" x 6'11"
Living/Dining Room	4.73 x 3.62	15'6" x 11'11"
Bedroom 1	4.97 x 2.89	16'4" x 9'6"
Bedroom 2	3.46 x 3.44	11'4" x 11'3"
Gross Internal Area	70.1m <sup>2</sup>	754ft <sup>2</sup>

