

THE BAMPTON

5 Winder Place (Plot 359)

THREE BEDROOM END-TERRACE HOUSE

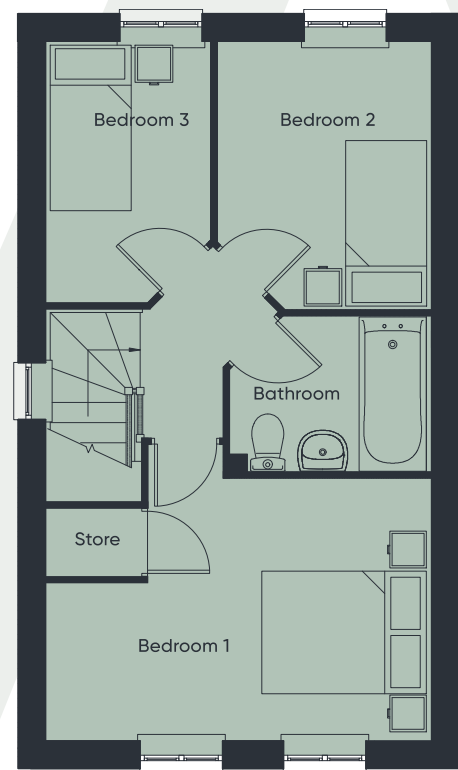
TOTAL INTERNAL AREA: 68m²



Ground Floor

GROUND FLOOR

Living / Dining room	4.5m x 4.2m
Kitchen	3m x 2.1m



First Floor

FIRST FLOOR

Bedroom 1	4.2m x 2.9m
Bedroom 2	2.9m x 2.3m
Bedroom 3	2.8m x 1.8m

INSPIRED SHARED OWNERSHIP

 **moat homes**
 local homes to love

Floorplans shown are indicative only. All room sizes are approximate with maximum dimensions of finished measurements.

These plans provide indicative details of the property/ies including kitchen/bathroom layouts, balconies/gardens, etc. All dimensions indicated are approximate and should not be relied upon for carpet sizes or items of furniture. Moat reserves the right to make changes to these plans prior to exchange of contracts.* Indicative measurement at widest point.

Plans do not highlight the gradient of outside space or location of manhole covers, sheds or paving. The final layout of the garden may change.