



**PERRY
BARR
VILLAGE
BIRMINGHAM**

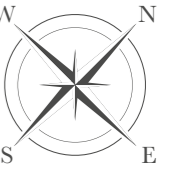
Aldridge Collection

BLOCK A

1 & 2 Bedroom
Shared Ownership
Apartments

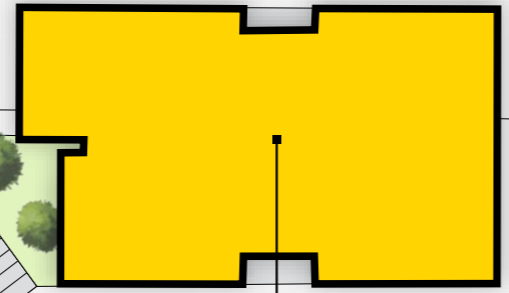
Site OVERVIEW

PODIUM LEVEL



ALDRIDGE ROAD

BLOCK A
Aldridge Collection



LGAH
RENTED HOMES



Aldridge Collection 1 & 2 BEDROOM APARTMENTS

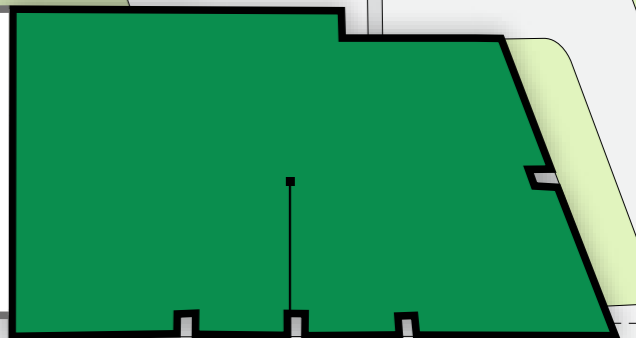
[VIEW FLOORPLANS >](#)

[PRICES & AVAILABILITY](#)

ALSO AVAILABLE
Erdington Collection
1 & 2 BEDROOM APARTMENTS

LGAH
RENTED HOMES

LGAH
RENTED HOMES



ALSO AVAILABLE
Birchfield Collection
1 & 2 BEDROOM APARTMENTS



RAILWAY LINE

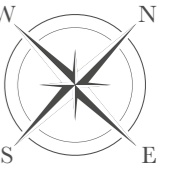
EXISTING
DEVELOPMENT

The development layout does not show details of gradients of land, boundary treatments, local authority street lighting or landscaping and is for illustrative purposes only. Trees, planting and public open spaces shown are indicative. The site plan does not form any part of a warranty or contract. Please speak to a Sales Consultant for more details.

Site

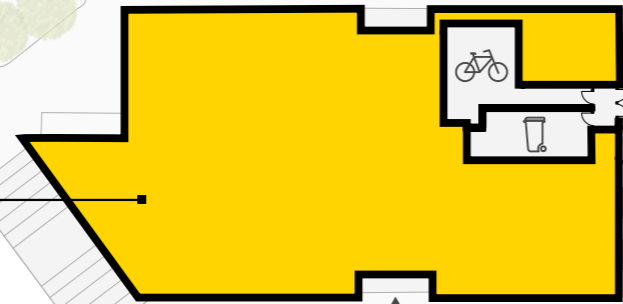
PARKING & UTILITIES

SITUATED ON
GROUND FLOOR



BLOCK A
Aldridge Collection

ALSO AVAILABLE
Erdington Collection
1 & 2 BEDROOM APARTMENTS

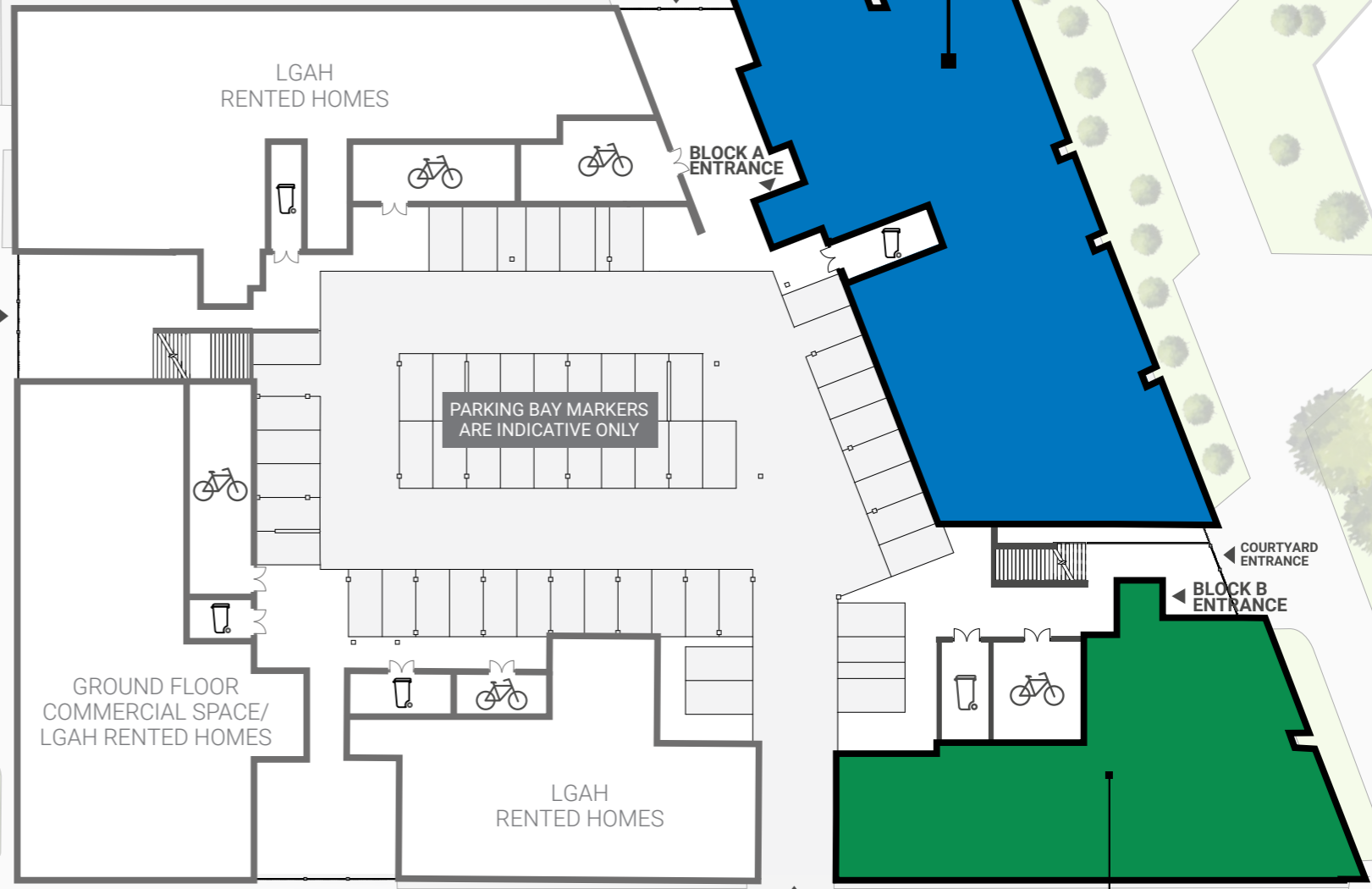


Aldridge Collection
1 & 2 BEDROOM APARTMENTS

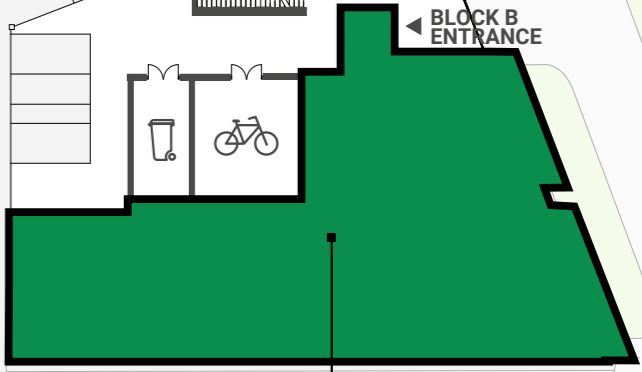
[VIEW FLOORPLANS >](#)

[PRICES & AVAILABILITY](#)

- Key**
- Bin Store
 - Cycle Store



ALSO AVAILABLE
Birchfield Collection
1 & 2 BEDROOM APARTMENTS



The development layout does not show details of gradients of land, boundary treatments, local authority street lighting or landscaping and is for illustrative purposes only. Trees, planting and public open spaces shown are indicative. The site plan does not form any part of a warranty or contract. Please speak to a Sales Consultant for more details.

Ground Floor

ALDRIDGE COLLECTION

1 Bedroom

PLOT 07 A 00-03	Length Width	
Kitchen	2.50m x 2.70m	8'2" x 8'10"
Living/Dining Room	3.87m x 4.81m	12'8" x 15'9"
Bedroom	2.89m x 5.26m	9'5" x 17'3"
Total Area	52.0 sq m	560 sq ft

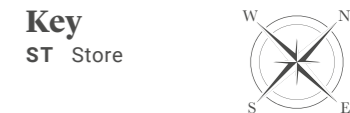
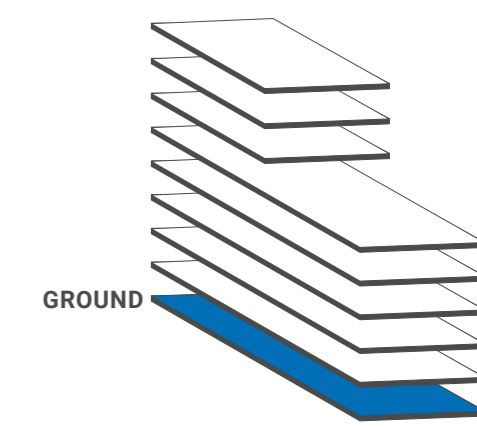
2 Bedrooms

PLOT 07 A 00-01	Length Width	
Kitchen	2.30m x 4.75m	7'6" x 15'7"
Living/Dining Room	3.80m x 4.36m	12'5" x 14'3"
Bedroom 1	3.45m x 4.26m	11'4" x 13'11"
Bedroom 2	2.91m x 4.25m	9'6" x 13'11"
Total Area	74.9 sq m	806 sq ft

PLOT 07 A 00-02	Length Width	
Kitchen	3.00m x 2.25m	9'10" x 7'4"
Living/Dining Room	6.04m x 7.51m	19'9" x 24'7"
Bedroom 1	3.65m x 5.25m	11'11" x 17'2"
Bedroom 2	3.31m x 3.81m	10'10" x 12'6"
Total Area	94.1 sq m	1013 sq ft

PLOT 07 A 00-04	Length Width	
Kitchen	3.80m x 1.80m	12'5" x 5'10"
Living/Dining Room	3.80m x 5.71m	12'5" x 18'8"
Bedroom 1	3.31m x 5.21m	10'10" x 17'1"
Bedroom 2	3.19m x 4.11m	10'5" x 13'5"
Total Area	77.6 sq m	835 sq ft

PLOT 07 A 00-05	Length Width	
Kitchen	4.11m x 4.16m	13'5" x 13'7"
Living/Dining Room	4.11m x 3.25m	13'5" x 10'7"
Bedroom 1	4.32m x 4.10m	14'2" x 13'5"
Bedroom 2	2.92m x 4.10m	9'6" x 13'5"
Total Area	72.7 sq m	783 sq ft



This brochure is designed specifically as a guide. The floorplans shown are for approximate measurements only. Exact layouts, dimensions, entrances, position of windows and doors may vary and are subject to change. Please ask a Sales Consultant for further information.

First Floor

ALDRIDGE COLLECTION

1 Bedroom

PLOT 07 A 01-03	Length Width	
Kitchen	2.50m x 2.70m	8'2" x 8'10"
Living/Dining Room	3.87m x 4.81m	12'8" x 15'9"
Bedroom	2.89m x 5.26m	9'5" x 17'3"
Total Area	52.0 sq m	560 sq ft

2 Bedrooms

PLOT 07 A 01-01	Length Width	
Kitchen	2.30m x 4.75m	7'6" x 15'7"
Living/Dining Room	3.80m x 4.36m	12'5" x 14'3"
Bedroom 1	3.45m x 4.26m	11'4" x 13'11"
Bedroom 2	2.91m x 4.25m	9'6" x 13'11"
Total Area	74.9 sq m	806 sq ft

PLOT 07 A 01-04	Length Width	
Kitchen	3.80m x 1.80m	12'5" x 5'10"
Living/Dining Room	3.80m x 5.71m	12'5" x 18'8"
Bedroom 1	3.31m x 5.21m	10'10" x 17'1"
Bedroom 2	3.19m x 4.11m	10'5" x 13'5"
Total Area	77.6 sq m	835 sq ft

PLOT 07 A 01-06	Length Width	
Kitchen	2.70m x 2.26m	8'10" x 7'4"
Living/Dining Room	3.85m x 5.25m	12'7" x 17'3"
Bedroom 1	3.38m x 4.95m	11'1" x 16'2"
Bedroom 2	4.83m x 3.26m	15'10" x 10'8"
Total Area	72.0 sq m	775 sq ft

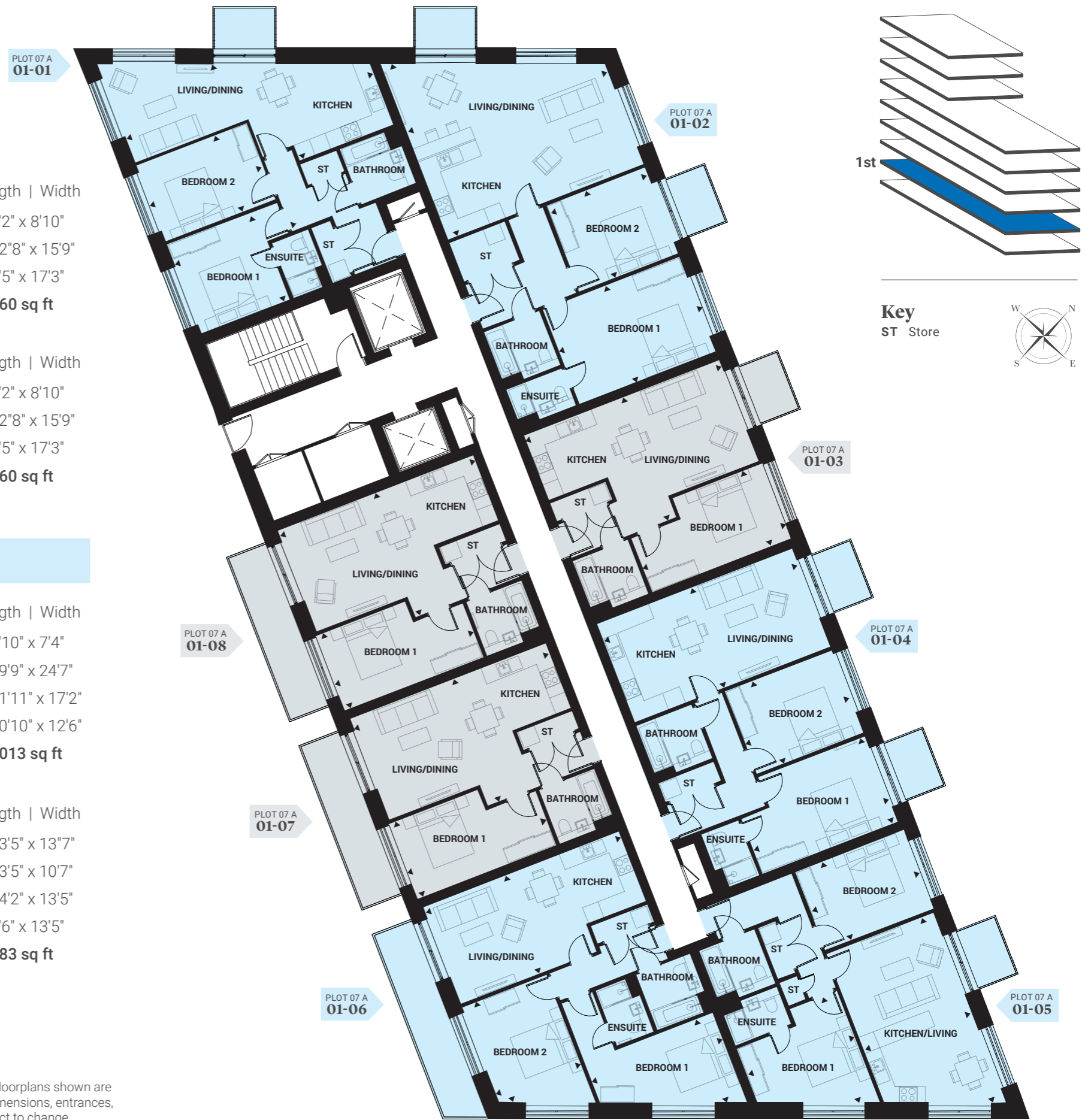
PLOT 07 A 01-07	Length Width	
Kitchen	2.50m x 2.70m	8'2" x 8'10"
Living/Dining Room	3.87m x 4.81m	12'8" x 15'9"
Bedroom	2.89m x 5.26m	9'5" x 17'3"
Total Area	52.0 sq m	560 sq ft

PLOT 07 A 01-08	Length Width	
Kitchen	2.50m x 2.70m	8'2" x 8'10"
Living/Dining Room	3.87m x 4.81m	12'8" x 15'9"
Bedroom	2.89m x 5.26m	9'5" x 17'3"
Total Area	52.0 sq m	560 sq ft

PLOT 07 A 01-02	Length Width	
Kitchen	3.00m x 2.25m	9'10" x 7'4"
Living/Dining Room	6.04m x 7.51m	19'9" x 24'7"
Bedroom 1	3.65m x 5.25m	11'11" x 17'2"
Bedroom 2	3.31m x 3.81m	10'10" x 12'6"
Total Area	94.1 sq m	1013 sq ft

PLOT 07 A 01-05	Length Width	
Kitchen	4.11m x 4.16m	13'5" x 13'7"
Living/Dining Room	4.11m x 3.25m	13'5" x 10'7"
Bedroom 1	4.32m x 4.10m	14'2" x 13'5"
Bedroom 2	2.92m x 4.10m	9'6" x 13'5"
Total Area	72.7 sq m	783 sq ft

This brochure is designed specifically as a guide. The floorplans shown are for approximate measurements only. Exact layouts, dimensions, entrances, position of windows and doors may vary and are subject to change. Please ask a Sales Consultant for further information.



Second Floor

ALDRIDGE COLLECTION

1 Bedroom

PLOT 07 A 02-03	Length Width	
Kitchen	2.50m x 2.70m	8'2" x 8'10"
Living/Dining Room	3.87m x 4.81m	12'8" x 15'9"
Bedroom	2.89m x 5.26m	9'5" x 17'3"
Total Area	52.0 sq m	560 sq ft

2 Bedrooms

PLOT 07 A 02-01	Length Width	
Kitchen	2.30m x 4.75m	7'6" x 15'7"
Living/Dining Room	3.80m x 4.36m	12'5" x 14'3"
Bedroom 1	3.45m x 4.26m	11'4" x 13'11"
Bedroom 2	2.91m x 4.25m	9'6" x 13'11"
Total Area	74.9 sq m	806 sq ft

PLOT 07 A 02-04	Length Width	
Kitchen	3.80m x 1.80m	12'5" x 5'10"
Living/Dining Room	3.80m x 5.71m	12'5" x 18'8"
Bedroom 1	3.31m x 5.21m	10'10" x 17'1"
Bedroom 2	3.19m x 4.11m	10'5" x 13'5"
Total Area	77.6 sq m	835 sq ft

PLOT 07 A 02-06	Length Width	
Kitchen	2.70m x 2.26m	8'10" x 7'4"
Living/Dining Room	3.85m x 5.25m	12'7" x 17'3"
Bedroom 1	3.38m x 4.95m	11'1" x 16'2"
Bedroom 2	4.83m x 3.26m	15'10" x 10'8"
Total Area	72.0 sq m	775 sq ft

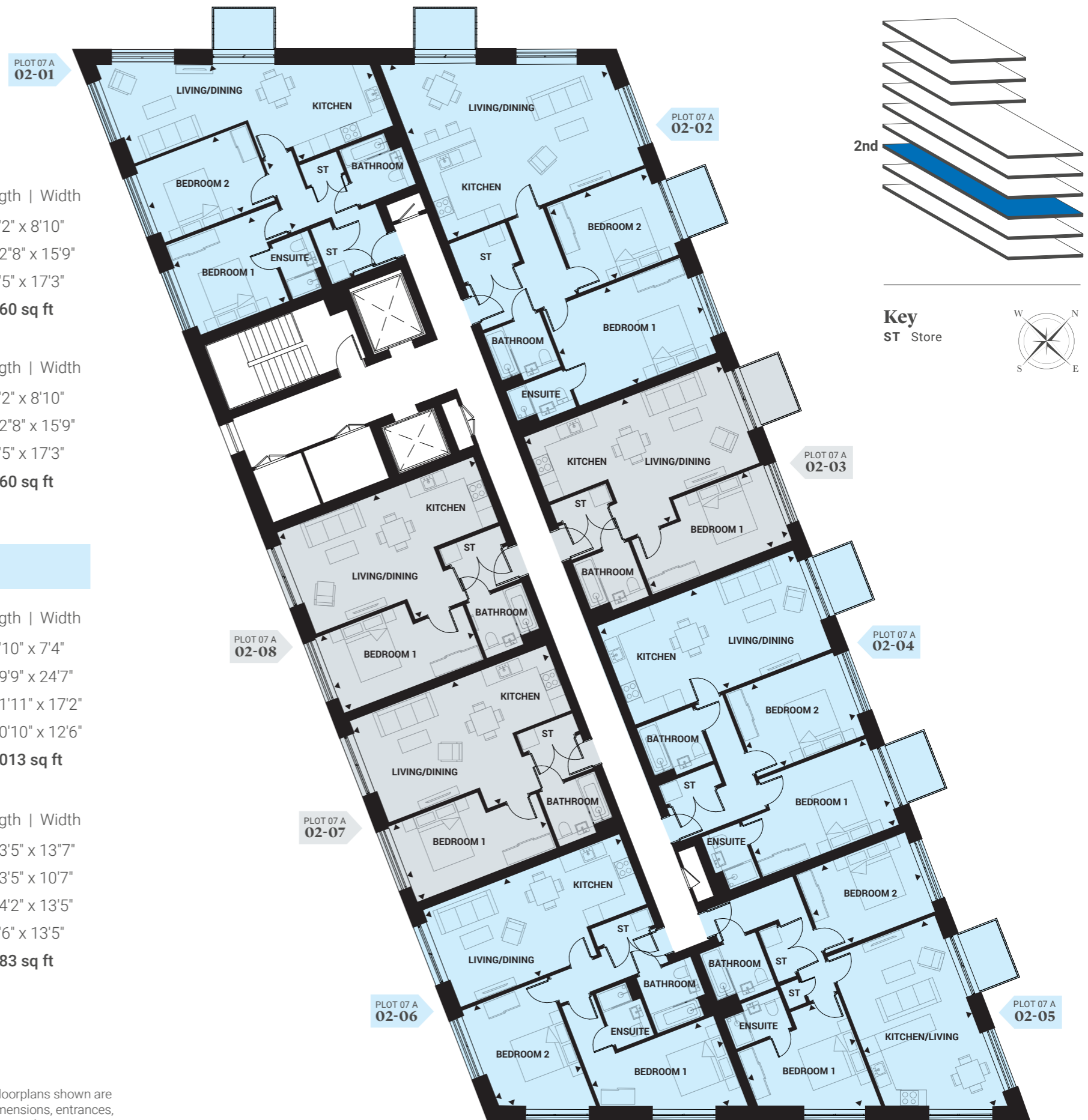
PLOT 07 A 02-07	Length Width	
Kitchen	2.50m x 2.70m	8'2" x 8'10"
Living/Dining Room	3.87m x 4.81m	12'8" x 15'9"
Bedroom	2.89m x 5.26m	9'5" x 17'3"
Total Area	52.0 sq m	560 sq ft

PLOT 07 A 02-08	Length Width	
Kitchen	2.50m x 2.70m	8'2" x 8'10"
Living/Dining Room	3.87m x 4.81m	12'8" x 15'9"
Bedroom	2.89m x 5.26m	9'5" x 17'3"
Total Area	52.0 sq m	560 sq ft

PLOT 07 A 02-02	Length Width	
Kitchen	3.00m x 2.25m	9'10" x 7'4"
Living/Dining Room	6.04m x 7.51m	19'9" x 24'7"
Bedroom 1	3.65m x 5.25m	11'11" x 17'2"
Bedroom 2	3.31m x 3.81m	10'10" x 12'6"
Total Area	94.1 sq m	1013 sq ft

PLOT 07 A 02-05	Length Width	
Kitchen	4.11m x 4.16m	13'5" x 13'7"
Living/Dining Room	4.11m x 3.25m	13'5" x 10'7"
Bedroom 1	4.32m x 4.10m	14'2" x 13'5"
Bedroom 2	2.92m x 4.10m	9'6" x 13'5"
Total Area	72.7 sq m	783 sq ft

This brochure is designed specifically as a guide. The floorplans shown are for approximate measurements only. Exact layouts, dimensions, entrances, position of windows and doors may vary and are subject to change. Please ask a Sales Consultant for further information.



Third Floor

ALDRIDGE COLLECTION

1 Bedroom

PLOT 07 A 03-03	Length Width	
Kitchen	2.50m x 2.70m	8'2" x 8'10"
Living/Dining Room	3.87m x 4.81m	12'8" x 15'9"
Bedroom	2.89m x 5.26m	9'5" x 17'3"
Total Area	52.0 sq m	560 sq ft

2 Bedrooms

PLOT 07 A 03-01	Length Width	
Kitchen	2.30m x 4.75m	7'6" x 15'7"
Living/Dining Room	3.80m x 4.36m	12'5" x 14'3"
Bedroom 1	3.45m x 4.26m	11'4" x 13'11"
Bedroom 2	2.91m x 4.25m	9'6" x 13'11"
Total Area	74.9 sq m	806 sq ft

PLOT 07 A 03-04	Length Width	
Kitchen	3.80m x 1.80m	12'5" x 5'10"
Living/Dining Room	3.80m x 5.71m	12'5" x 18'8"
Bedroom 1	3.31m x 5.21m	10'10" x 17'1"
Bedroom 2	3.19m x 4.11m	10'5" x 13'5"
Total Area	77.6 sq m	835 sq ft

PLOT 07 A 03-06	Length Width	
Kitchen	2.70m x 2.26m	8'10" x 7'4"
Living/Dining Room	3.85m x 5.25m	12'7" x 17'3"
Bedroom 1	3.38m x 4.95m	11'1" x 16'2"
Bedroom 2	4.83m x 3.26m	15'10" x 10'8"
Total Area	72.0 sq m	775 sq ft

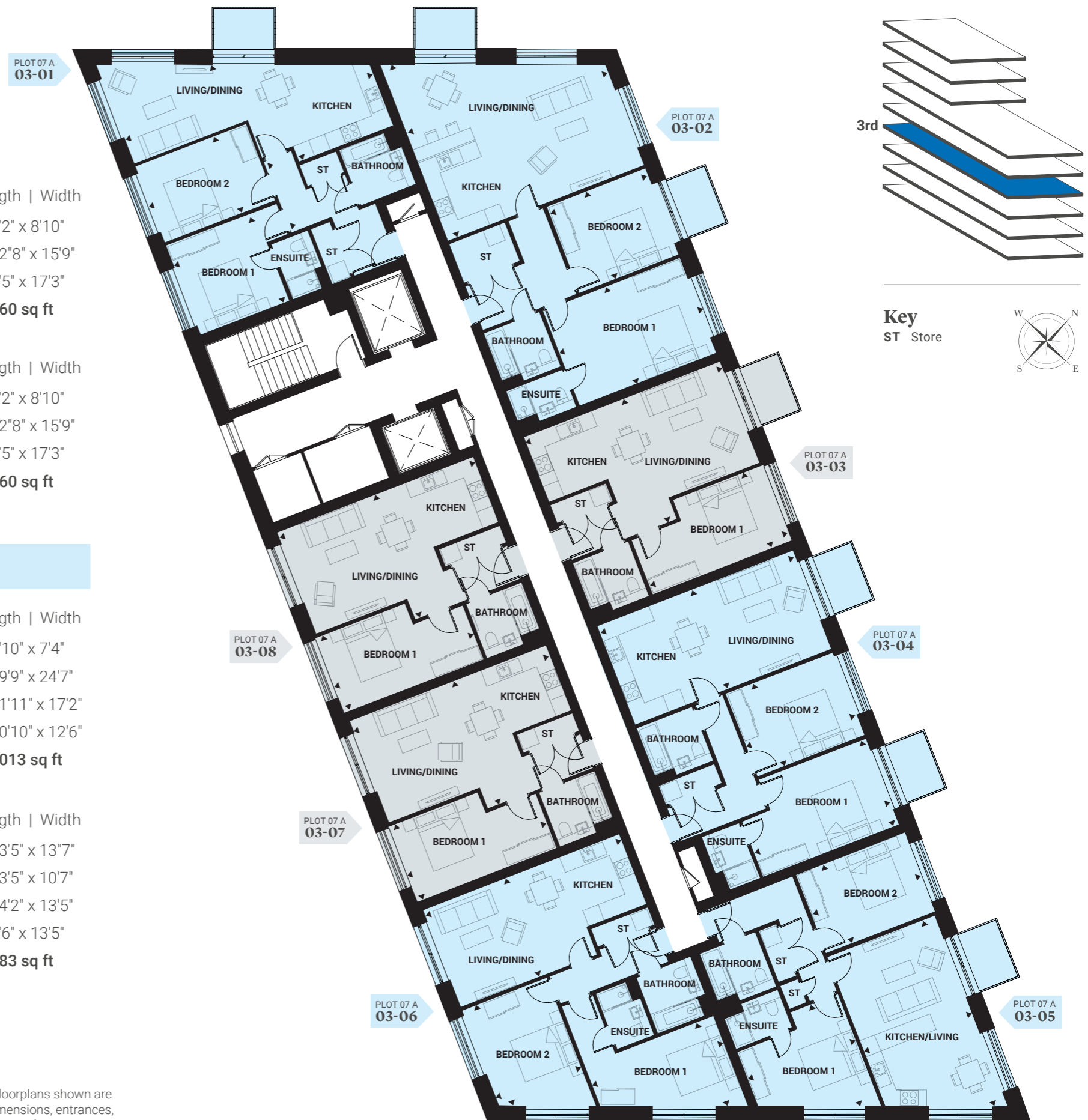
PLOT 07 A 03-07	Length Width	
Kitchen	2.50m x 2.70m	8'2" x 8'10"
Living/Dining Room	3.87m x 4.81m	12'8" x 15'9"
Bedroom	2.89m x 5.26m	9'5" x 17'3"
Total Area	52.0 sq m	560 sq ft

PLOT 07 A 03-08	Length Width	
Kitchen	2.50m x 2.70m	8'2" x 8'10"
Living/Dining Room	3.87m x 4.81m	12'8" x 15'9"
Bedroom	2.89m x 5.26m	9'5" x 17'3"
Total Area	52.0 sq m	560 sq ft

PLOT 07 A 03-02	Length Width	
Kitchen	3.00m x 2.25m	9'10" x 7'4"
Living/Dining Room	6.04m x 7.51m	19'9" x 24'7"
Bedroom 1	3.65m x 5.25m	11'11" x 17'2"
Bedroom 2	3.31m x 3.81m	10'10" x 12'6"
Total Area	94.1 sq m	1013 sq ft

PLOT 07 A 03-05	Length Width	
Kitchen	4.11m x 4.16m	13'5" x 13'7"
Living/Dining Room	4.11m x 3.25m	13'5" x 10'7"
Bedroom 1	4.32m x 4.10m	14'2" x 13'5"
Bedroom 2	2.92m x 4.10m	9'6" x 13'5"
Total Area	72.7 sq m	783 sq ft

This brochure is designed specifically as a guide. The floorplans shown are for approximate measurements only. Exact layouts, dimensions, entrances, position of windows and doors may vary and are subject to change. Please ask a Sales Consultant for further information.



Fourth Floor

ALDRIDGE COLLECTION

1 Bedroom

PLOT 07 A 04-02	Length Width	
Kitchen	2.50m x 2.70m	8'2" x 8'10"
Living/Dining Room	3.87m x 4.81m	12'8" x 15'9"
Bedroom	2.89m x 5.26m	9'5" x 17'3"
Total Area	52.0 sq m	560 sq ft

2 Bedrooms

PLOT 07 A 04-01	Length Width	
Kitchen	2.30m x 4.75m	7'6" x 15'7"
Living/Dining Room	3.80m x 4.36m	12'5" x 14'3"
Bedroom 1	3.45m x 4.26m	11'4" x 13'11"
Bedroom 2	2.91m x 4.25m	9'6" x 13'11"
Total Area	74.9 sq m	806 sq ft

PLOT 07 A 04-05	Length Width	
Kitchen	4.11m x 4.16m	13'5" x 13'7"
Living/Dining Room	4.11m x 3.25m	13'5" x 10'7"
Bedroom 1	4.32m x 4.10m	14'2" x 13'5"
Bedroom 2	2.92m x 4.10m	9'6" x 13'5"
Total Area	72.7 sq m	783 sq ft

PLOT 07 A 04-08	Length Width	
Kitchen	3.00m x 2.25m	9'10" x 7'4"
Living/Dining Room	6.04m x 7.51m	19'9" x 24'7"
Bedroom 1	3.65m x 5.25m	11'11" x 17'2"
Bedroom 2	3.31m x 3.81m	10'10" x 12'6"
Total Area	94.1 sq m	1013 sq ft

PLOT 07 A 04-03	Length Width	
Kitchen	2.50m x 2.70m	8'2" x 8'10"
Living/Dining Room	3.87m x 4.81m	12'8" x 15'9"
Bedroom	2.89m x 5.26m	9'5" x 17'3"
Total Area	52.0 sq m	560 sq ft

PLOT 07 A 04-07	Length Width	
Kitchen	2.50m x 2.70m	8'2" x 8'10"
Living/Dining Room	3.87m x 4.81m	12'8" x 15'9"
Bedroom	2.89m x 5.26m	9'5" x 17'3"
Total Area	52.0 sq m	560 sq ft

PLOT 07 A 04-04	Length Width	
Kitchen	2.70m x 2.26m	8'10" x 7'4"
Living/Dining Room	3.85m x 5.25m	12'7" x 17'3"
Bedroom 1	3.38m x 4.95m	11'1" x 16'2"
Bedroom 2	4.83m x 3.26m	15'10" x 10'8"
Total Area	72.0 sq m	775 sq ft

PLOT 07 A 04-06	Length Width	
Kitchen	3.80m x 1.80m	12'5" x 5'10"
Living/Dining Room	3.80m x 5.71m	12'5" x 18'8"
Bedroom 1	3.31m x 5.21m	10'10" x 17'1"
Bedroom 2	3.19m x 4.11m	10'5" x 13'5"
Total Area	77.6 sq m	835 sq ft

This brochure is designed specifically as a guide. The floorplans shown are for approximate measurements only. Exact layouts, dimensions, entrances, position of windows and doors may vary and are subject to change. Please ask a Sales Consultant for further information.



Fifth Floor

ALDRIDGE COLLECTION

1 Bedroom

PLOT 07 A 05-03	Length Width	
Kitchen	2.50m x 2.70m	8'2" x 8'10"
Living/Dining Room	3.87m x 4.81m	12'8" x 15'9"
Bedroom	2.89m x 5.26m	9'5" x 17'3"
Total Area	52.0 sq m	560 sq ft

2 Bedrooms

PLOT 07 A 05-01	Length Width	
Kitchen	2.30m x 4.75m	7'6" x 15'7"
Living/Dining Room	3.80m x 4.36m	12'5" x 14'3"
Bedroom 1	3.45m x 4.26m	11'4" x 13'11"
Bedroom 2	2.91m x 4.25m	9'6" x 13'11"
Total Area	74.9 sq m	806 sq ft

PLOT 07 A 05-05	Length Width	
Kitchen	2.70m x 2.25m	8'10" x 7'4"
Living/Dining Room	3.83m x 4.66m	12'6" x 15'3"
Bedroom 1	3.38m x 4.95m	11'1" x 16'2"
Bedroom 2	4.83m x 3.26m	15'10" x 10'8"
Total Area	70.0 sq m	753 sq ft

PLOT 07 A 05-07	Length Width	
Kitchen	3.70m x 4.11m	12'1" x 13'5"
Living/Dining Room	3.35m x 3.52m	10'11" x 11'6"
Bedroom 1	3.67m x 4.10m	12'0" x 13'5"
Bedroom 2	2.92m x 4.10m	9'6" x 13'5"
Total Area	70.6 sq m	760 sq ft

PLOT 07 A 05-04	Length Width	
Kitchen	2.50m x 2.70m	8'2" x 8'10"
Living/Dining Room	3.87m x 4.81m	12'8" x 15'9"
Bedroom	2.89m x 5.26m	9'5" x 17'3"
Total Area	52.0 sq m	560 sq ft

PLOT 07 A 05-08	Length Width	
Kitchen	3.40m x 2.70m	11'1" x 8'10"
Living/Dining Room	3.90m x 4.22m	12'9" x 13'10"
Bedroom	2.90m x 5.26m	9'5" x 17'3"
Total Area	50.1 sq m	539 sq ft

PLOT 07 A 05-02	Length Width	
Kitchen	3.00m x 2.25m	9'10" x 7'4"
Living/Dining Room	6.04m x 7.51m	19'9" x 24'7"
Bedroom 1	3.65m x 5.25m	11'11" x 17'2"
Bedroom 2	3.31m x 3.81m	10'10" x 12'6"
Total Area	94.1 sq m	1013 sq ft

PLOT 07 A 05-06	Length Width	
Kitchen	3.80m x 1.80m	12'5" x 5'10"
Living/Dining Room	3.80m x 5.12m	12'5" x 16'9"
Bedroom 1	3.20m x 4.62m	10'5" x 15'1"
Bedroom 2	3.30m x 4.13m	10'9" x 13'6"
Total Area	73.5 sq m	791 sq ft

This brochure is designed specifically as a guide. The floorplans shown are for approximate measurements only. Exact layouts, dimensions, entrances, position of windows and doors may vary and are subject to change. Please ask a Sales Consultant for further information.

PLOT 07 A 05-01

PLOT 07 A 05-02

PLOT 07 A 05-03

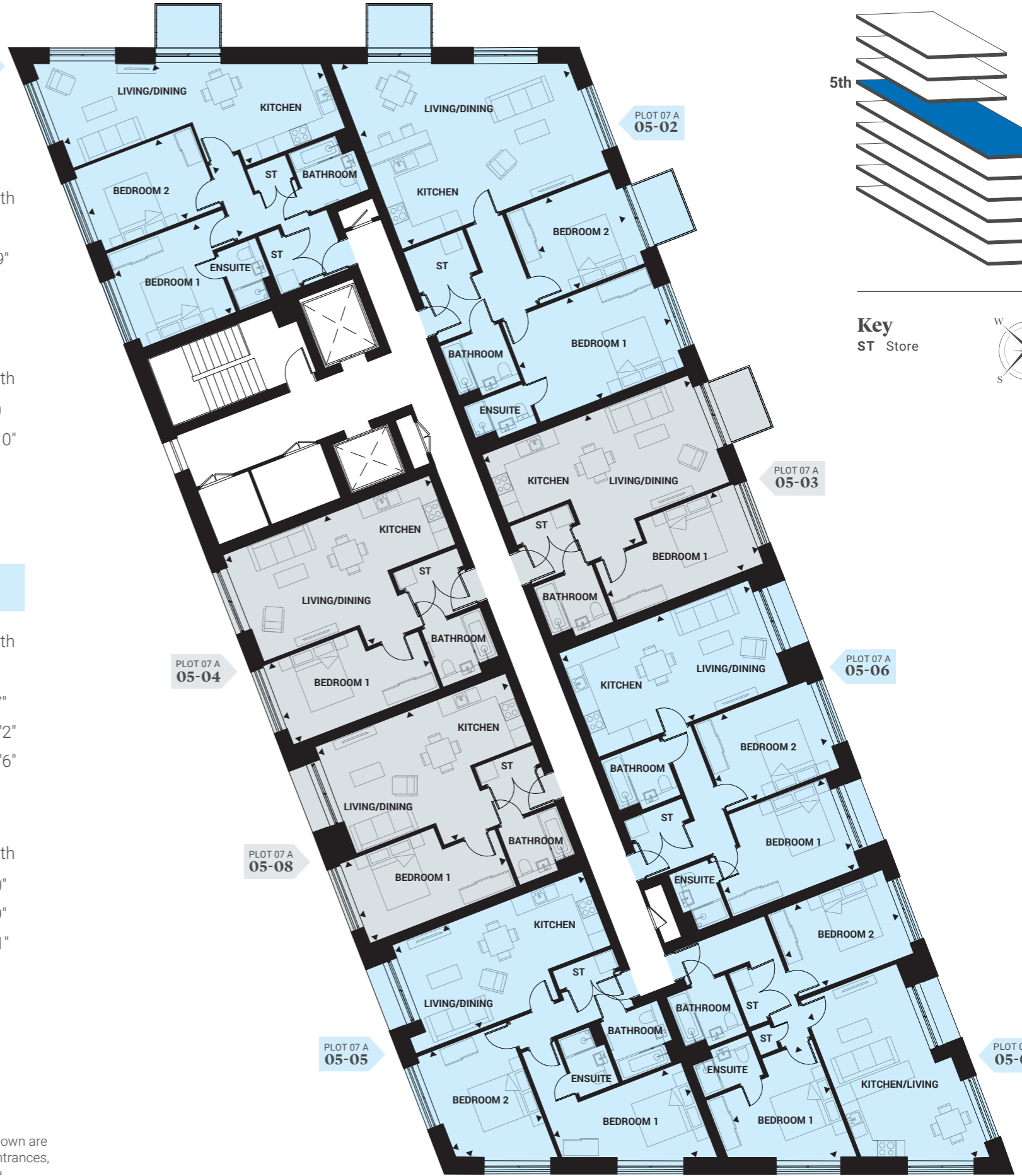
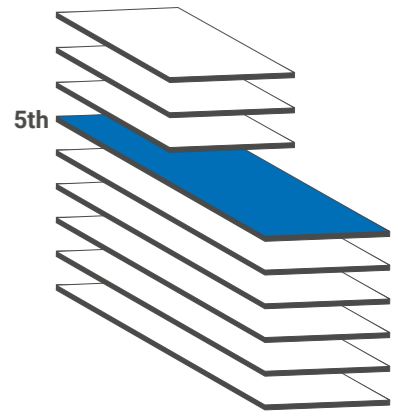
PLOT 07 A 05-04

PLOT 07 A 05-06

PLOT 07 A 05-08

PLOT 07 A 05-05

PLOT 07 A 05-07



Sixth Floor

ALDRIDGE COLLECTION

1 Bedroom

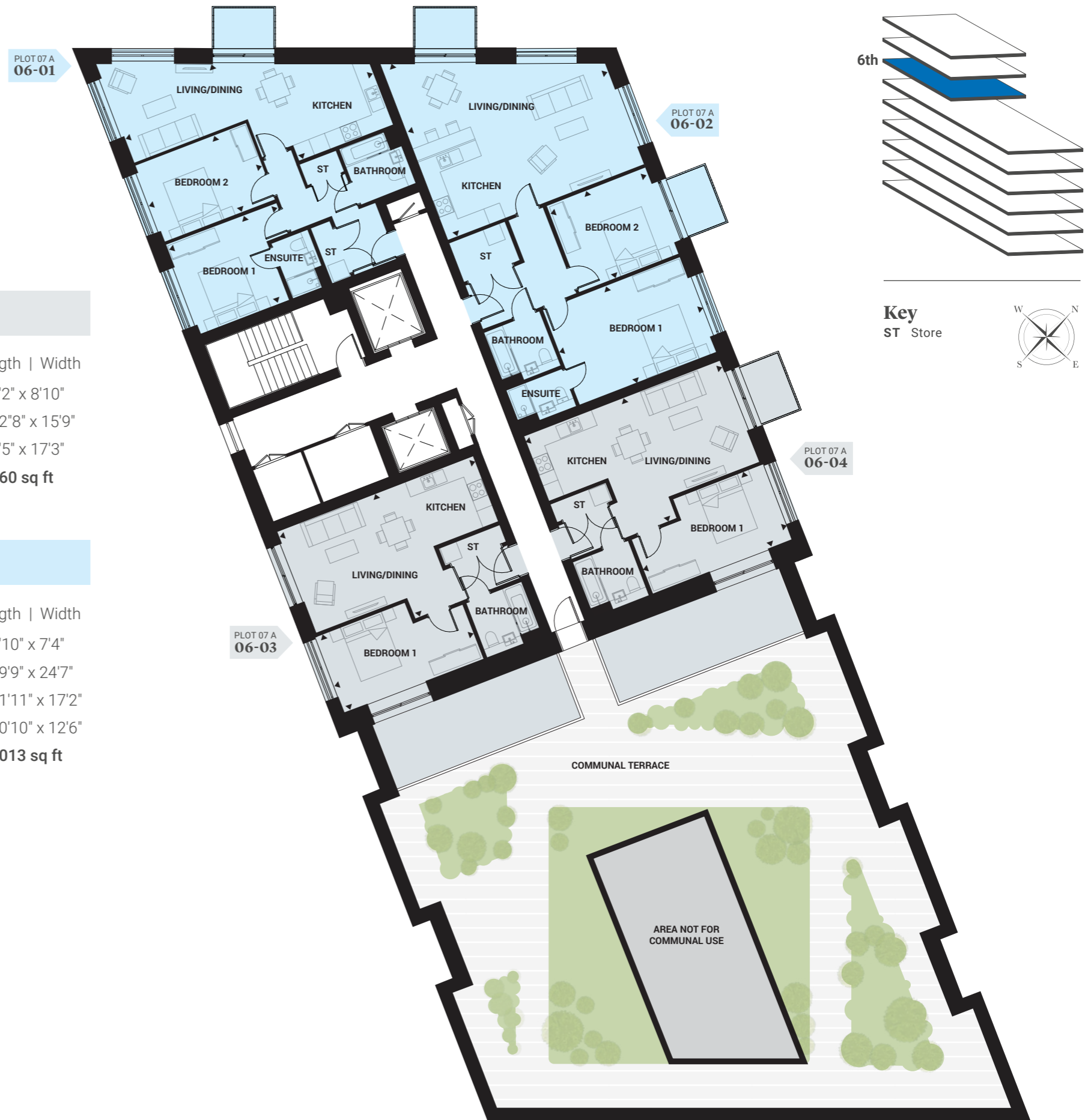
PLOT 07 A 06-03	Length Width	
Kitchen	2.50m x 2.70m	8'2" x 8'10"
Living/Dining Room	3.87m x 4.81m	12'8" x 15'9"
Bedroom	2.89m x 5.26m	9'5" x 17'3"
Total Area	52.0 sq m	560 sq ft

PLOT 07 A 06-04	Length Width	
Kitchen	2.50m x 2.70m	8'2" x 8'10"
Living/Dining Room	3.87m x 4.81m	12'8" x 15'9"
Bedroom	2.89m x 5.26m	9'5" x 17'3"
Total Area	52.0 sq m	560 sq ft

2 Bedrooms

PLOT 07 A 06-01	Length Width	
Kitchen	2.30m x 4.75m	7'6" x 15'7"
Living/Dining Room	3.80m x 4.36m	12'5" x 14'3"
Bedroom 1	3.45m x 4.26m	11'4" x 13'11"
Bedroom 2	2.91m x 4.25m	9'6" x 13'11"
Total Area	74.9 sq m	806 sq ft

PLOT 07 A 06-02	Length Width	
Kitchen	3.00m x 2.25m	9'10" x 7'4"
Living/Dining Room	6.04m x 7.51m	19'9" x 24'7"
Bedroom 1	3.65m x 5.25m	11'11" x 17'2"
Bedroom 2	3.31m x 3.81m	10'10" x 12'6"
Total Area	94.1 sq m	1013 sq ft



This brochure is designed specifically as a guide. The floorplans shown are for approximate measurements only. Exact layouts, dimensions, entrances, position of windows and doors may vary and are subject to change. Please ask a Sales Consultant for further information.

Seventh Floor

ALDRIDGE COLLECTION

1 Bedroom

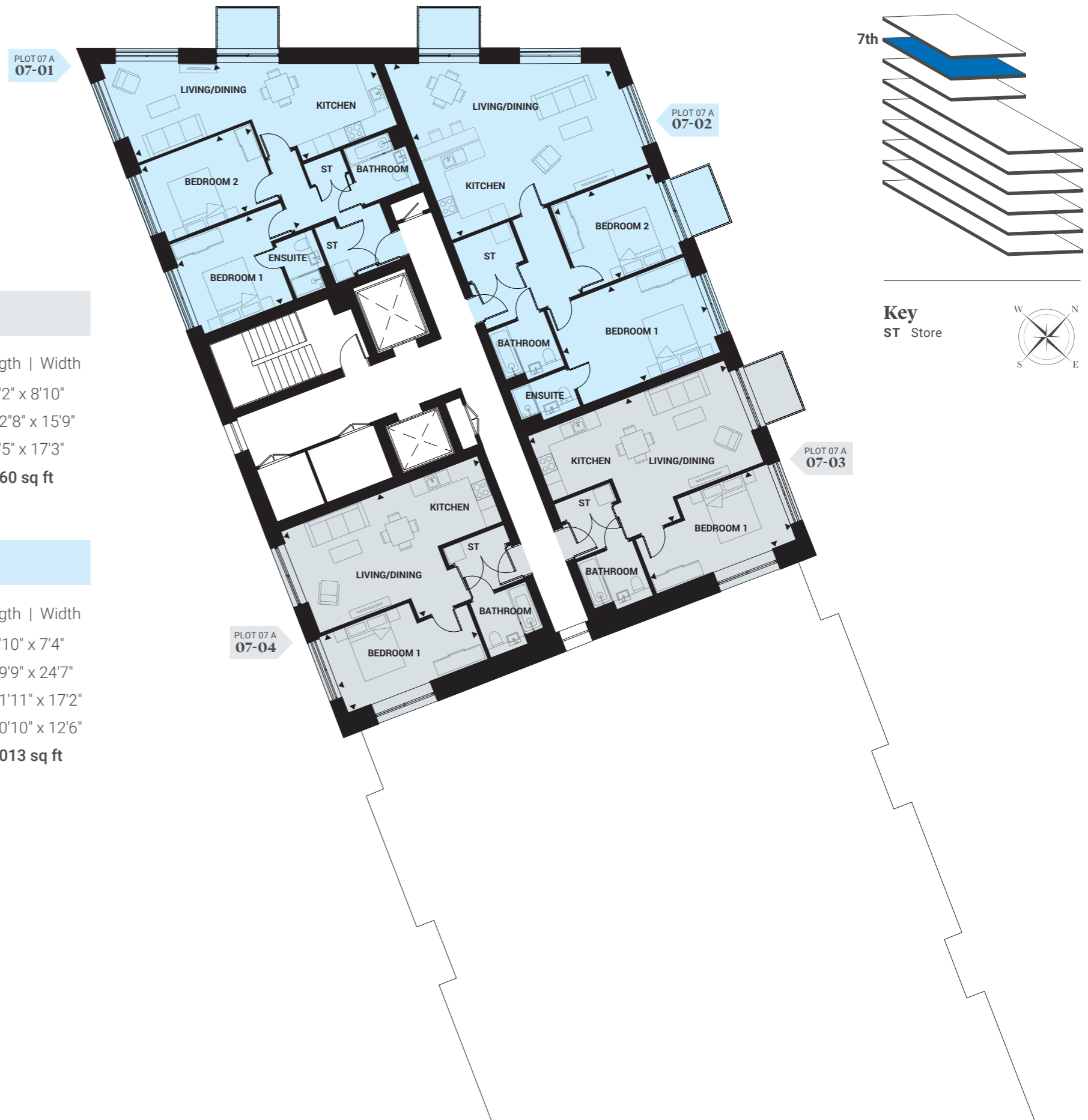
PLOT 07 A 07-03	Length Width	
Kitchen	2.50m x 2.70m	8'2" x 8'10"
Living/Dining Room	3.87m x 4.81m	12'8" x 15'9"
Bedroom	2.89m x 5.26m	9'5" x 17'3"
Total Area	52.0 sq m	560 sq ft

PLOT 07 A 07-04	Length Width	
Kitchen	2.50m x 2.70m	8'2" x 8'10"
Living/Dining Room	3.87m x 4.81m	12'8" x 15'9"
Bedroom	2.89m x 5.26m	9'5" x 17'3"
Total Area	52.0 sq m	560 sq ft

2 Bedrooms

PLOT 07 A 07-01	Length Width	
Kitchen	2.30m x 4.75m	7'6" x 15'7"
Living/Dining Room	3.80m x 4.36m	12'5" x 14'3"
Bedroom 1	3.45m x 4.26m	11'4" x 13'11"
Bedroom 2	2.91m x 4.25m	9'6" x 13'11"
Total Area	74.9 sq m	806 sq ft

PLOT 07 A 07-02	Length Width	
Kitchen	3.00m x 2.25m	9'10" x 7'4"
Living/Dining Room	6.04m x 7.51m	19'9" x 24'7"
Bedroom 1	3.65m x 5.25m	11'11" x 17'2"
Bedroom 2	3.31m x 3.81m	10'10" x 12'6"
Total Area	94.1 sq m	1013 sq ft



This brochure is designed specifically as a guide. The floorplans shown are for approximate measurements only. Exact layouts, dimensions, entrances, position of windows and doors may vary and are subject to change. Please ask a Sales Consultant for further information.

Eighth Floor

ALDRIDGE COLLECTION

1 Bedroom

PLOT 07 A 08-02	Length Width		PLOT 07 A 08-03	Length Width	
Kitchen	2.50m x 2.70m	8'2" x 8'10"	Kitchen	2.50m x 2.70m	8'2" x 8'10"
Living/Dining Room	3.87m x 4.81m	12'8" x 15'9"	Living/Dining Room	3.87m x 4.81m	12'8" x 15'9"
Bedroom	2.89m x 5.26m	9'5" x 17'3"	Bedroom	2.89m x 5.26m	9'5" x 17'3"
Total Area	52.0 sq m	560 sq ft	Total Area	52.0 sq m	560 sq ft

2 Bedrooms

PLOT 07 A 08-01	Length Width	
Kitchen	2.30m x 4.75m	7'6" x 15'7"
Living/Dining Room	3.80m x 4.36m	12'5" x 14'3"
Bedroom 1	3.45m x 4.26m	11'4" x 13'11"
Bedroom 2	2.91m x 4.25m	9'6" x 13'11"
Total Area	74.9 sq m	806 sq ft



This brochure is designed specifically as a guide. The floorplans shown are for approximate measurements only. Exact layouts, dimensions, entrances, position of windows and doors may vary and are subject to change. Please ask a Sales Consultant for further information.

[SITE PLAN](#)

[← PREVIOUS FLOOR](#)

[SPECIFICATION →](#)

[PRICES & AVAILABILITY](#)

IT'S ALL IN *the detail...*

Kitchen

- Contemporary grey gloss handle less kitchen
- Laminate worktop with matching upstand
- Stainless steel splashback to hob
- Stainless steel 1½ bowl sink with chrome mixer tap
- Bosch electric single oven, ceramic hob and integrated cooker hood
- Kenwood integrated fridge/freezer
- Hoover integrated dishwasher
- Zanussi washer/dryer located in Utility cupboard

Bathroom & Ensuite

- Contemporary white sanitaryware including bath, bath panel, semi recessed basin and wall hung toilet
- Chrome mixer tap with push down waste
- Integrated storage cupboard below sink
- Thermostatic bath/shower mixer over bath with dual shower head
- Glass shower screen to bath
- Thermostatic shower mixer to shower cubicle with adjustable shower head
- Chrome framed glass shower screen to ensuite
- Large format wall tiling
- Chrome heated towel rail
- Illuminated mirror
- Toilet roll holder

Flooring

- Wood effect Karndean flooring to hall, kitchen, dining/living room
- Large format tiling to bathroom and ensuite
- Grey carpet to bedrooms

General

- Anthracite aluminium double glazed windows
- Walls and ceilings painted in white
- Architraves and skirtings painted in white
- White painted flush internal doors with chrome ironmongery
- Blinds to all windows
- Communal gas boiler providing hot water and central heating via white contemporary radiators
- Sprinkler system
- NHBC 10 year build warranty

Electrical

- Downlights to hall, kitchen, dining/living room, bathroom and ensuite
- Pendant lighting to bedrooms
- White sockets and switches throughout
- Telephone point to living room and bedroom 1
- TV point to living room and bedroom 1
- Smoke and heat detectors
- MVHR (Mechanical Ventilation Heat Recovery System) to apartment

Communal

- Video entry system
- White apartment front door with spyhole viewer
- Bin store
- Bike store with gated and fobbed access
- Lockable postboxes to lobby
- Communal roof terraces and podium garden*
- Balcony or terrace to selected apartments
- Parking to selected 2 bedroom apartments
- Management provider office on site
- Communal green with children's play area and basketball court

* Speak to Sales Consultant for further details.

The specification has been compiled with the best intentions to provide a guide to the finishes, however homes are sold as seen and we recommend that customers satisfy themselves to the specification and finishes installed to each home.

Images show Shared Ownership homes at Perry Barr with CGI dressings.





About us

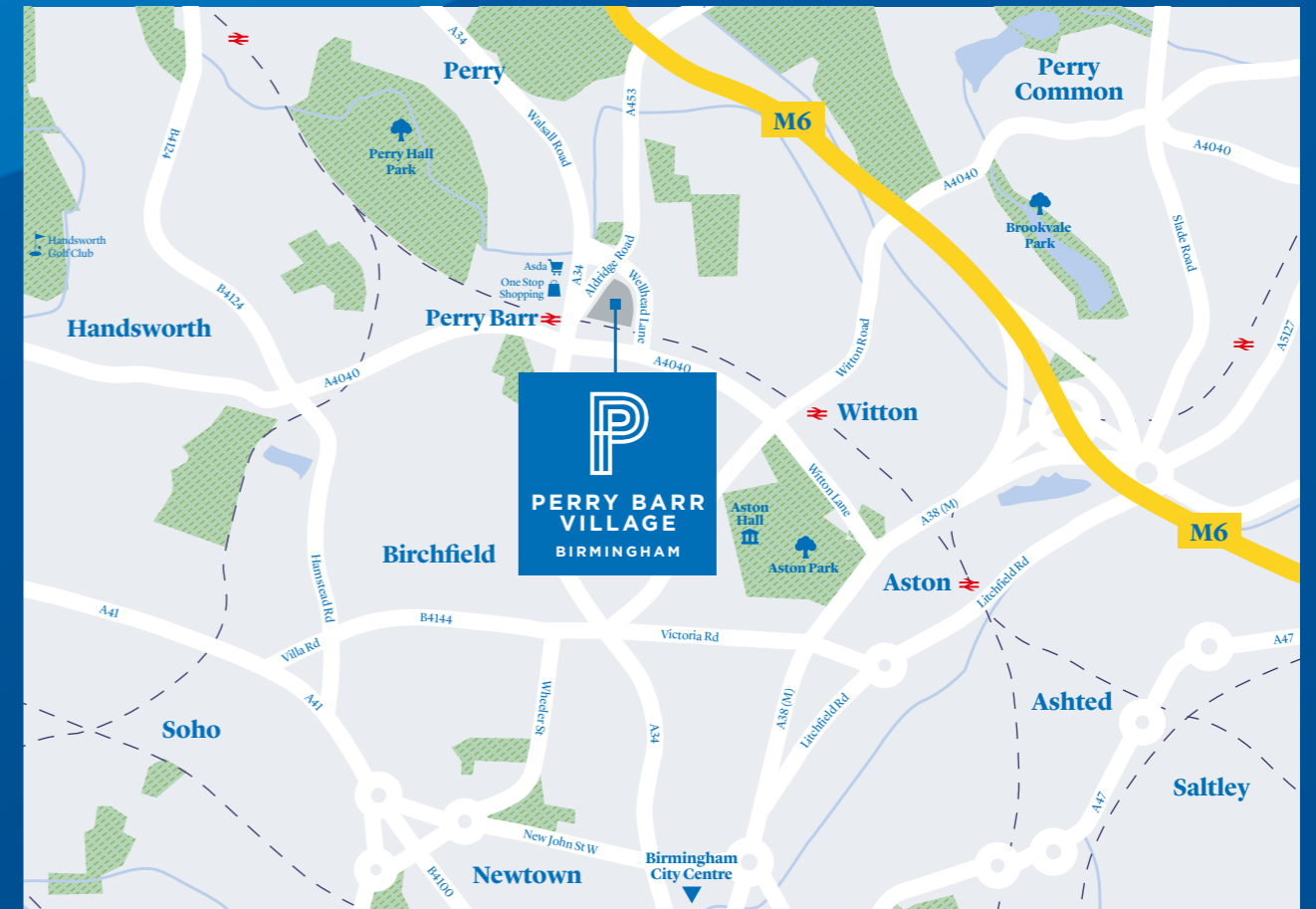
With us, people come first.
That's been the Legal & General way for almost 200 years.

Legal & General was founded in 1836 by six lawyers in a coffee shop on London's Chancery Lane. Nearly two centuries later, we are investing in new homes for all ages, social groups and home ownership structures.

The shortage of housing in the UK and the high deposits required to buy a property outright mean that home ownership is out of reach for many people. Our mission is to improve everybody's chances to become a homeowner. Whether it's a first-time buyer, young couple or growing family, we believe that everyone deserves a safe and secure space to call their own.

[CLICK HERE TO FIND OUT MORE](#)

How to find us...



ALDRIDGE ROAD, PERRY BARR, BIRMINGHAM B42 2UD



what3words elite.hills.vase

FROM A34 SOUTH

Follow the A34 north and turn right onto Aston Lane A4040, then turn left into Wellhead Lane, the entrance to Perry Barr will be on the left.

FROM A34 NORTH

Follow A34 south and take the A453 Harrier Way sliproad, then turn right into Wellhead Lane, the entrance to Perry Barr will be on the right

[VIEW MAP](#)

Legal & General Affordable Homes terms and conditions apply. All content within this document is indicative only. Legal & General Affordable Homes reserves the right to make any changes at any time. Please speak to a member of our Sales Team for up-to-date information when reserving your new home. Information is correct at the time of going to print. Maps not to scale. Distances and times taken from google.co.uk/maps. January 2025. LGAH-PB(A)-22012025



**PERRY
BARR
VILLAGE**

ALDRIDGE ROAD,
BIRMINGHAM,
B42 2UD

PERRY-BARR-VILLAGE.CO.UK

0121 7565 308



what3words
elite.hills.vase


**Legal &
General**
AFFORDABLE HOMES