

# Seaton Meadows

## The Jade 4 bedroom home

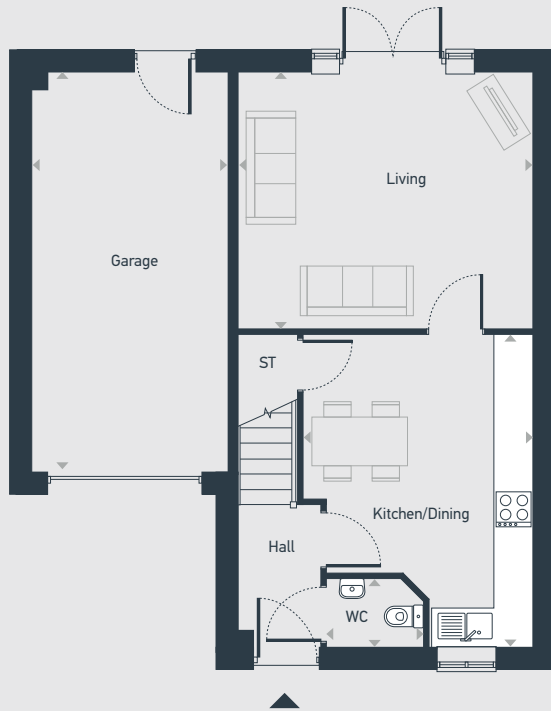


# Seaton Meadows

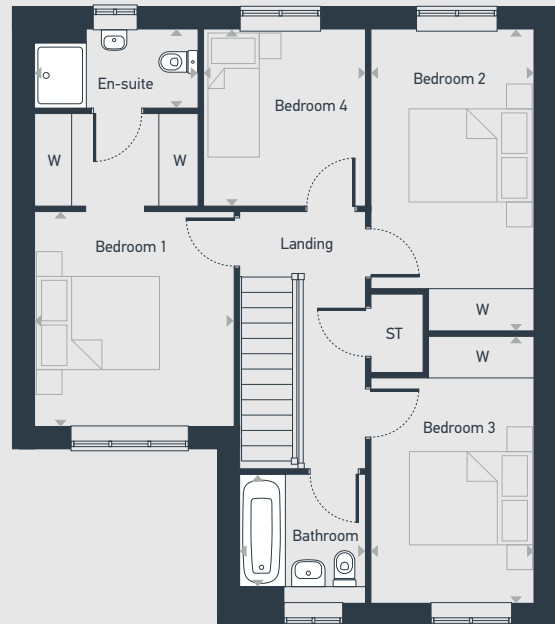
# The Jade 4 bedroom home

Plots as drawn: 60, 61, 66, 78, 79, 83 and 84

100.4 sq.m / 1080.5 sq.ft



GROUND FLOOR



FIRST FLOOR

ST: Store WC: Water Closet W: Wardrobe

DIMENSIONS	m	ft
Kitchen/Dining	3.51m x 4.77m	11'6" x 15'8"
Living	4.51m x 3.91m	14'10" x 12'10"
WC	1.47m x 1.04m	4'10" x 3'5"
Garage	3.00m x 6.13m	9'10" x 20'2"

DIMENSIONS	m	ft
Bedroom 1	3.04 x 3.29	10'0" x 10'10"
En-suite	2.49 x 1.20	8'2" x 3'11"
Bedroom 2	2.50 x 4.61	8'2" x 15'1"
Bedroom 3	2.50 x 4.08	8'2" x 13'5"
Bedroom 4	2.47 x 2.70	8'1" x 8'10"
Bathroom	1.91 x 1.96	6'3" x 6'5"



01429 261 351 | [hartlepool@mannersandharrison.co.uk](mailto:hartlepool@mannersandharrison.co.uk) | [placesforpeople.co.uk/seatonmeadows](http://placesforpeople.co.uk/seatonmeadows)  
Seaton Meadows Golden Meadows, Hartlepool, TS25 1GH

Please note: All layouts and floor plans, configurations, maps and information are intended for guidance only and accuracy of this information cannot be relied upon by prospective purchasers who must make their own enquiries to satisfy themselves by inspection or otherwise as to the correct detail.