

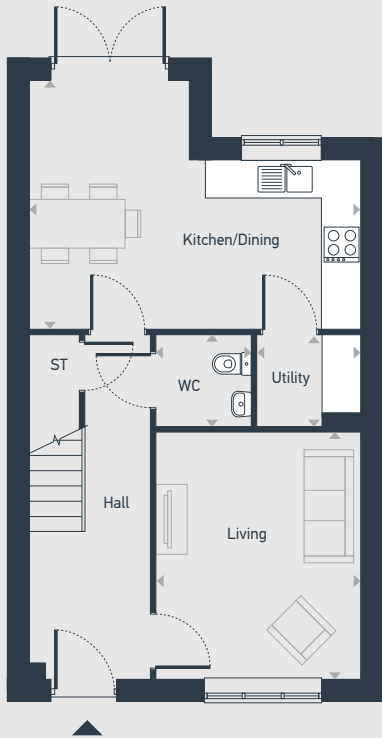
Seaton Meadows

The Sage 3 bedroom home

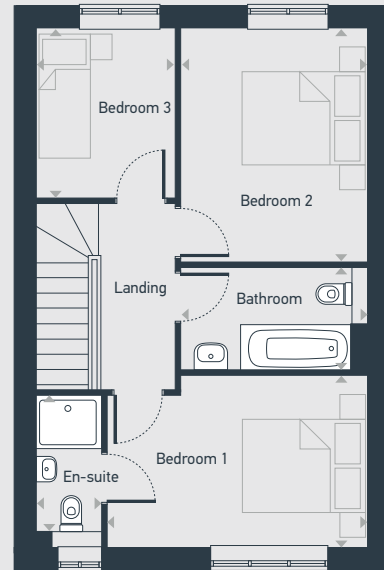


Plots as drawn: 59, 63, 70, 71, 76, 77, 97 and 98

84.93 sq.m / 914.1 sq.ft



GROUND FLOOR



FIRST FLOOR

ST: Store WC: Water Closet

DIMENSIONS	m	ft
Kitchen/Dining	5.11m x 3.84m	16'9" x 12'7"
Utility	1.59m x 1.40m	5'3" x 4'7"
Living	3.16m x 3.80m	10'4" x 12'6"
WC	1.47m x 1.40m	4'10" x 4'7"

DIMENSIONS	m	ft
Bedroom 1	4.02m x 2.64m	13'3" x 8'8"
En-suite	0.99m x 2.34m	3'3" x 7'8"
Bedroom 2	2.87m x 3.59m	9'5" x 11'10"
Bedroom 3	2.15m x 2.60m	7'1" x 8'7"
Bathroom	2.87m x 1.57m	9'5" x 5'2"



01429 261 351 | hartlepool@mannersandharrison.co.uk | placesforpeople.co.uk/seatonmeadows
Seaton Meadows Golden Meadows, Hartlepool, TS25 1GH

Please note: All layouts and floor plans, configurations, maps and information are intended for guidance only and accuracy of this information cannot be relied upon by prospective purchasers who must make their own enquiries to satisfy themselves by inspection or otherwise as to the correct detail.