

9 Augusta Close, Southampton



2 bedroom House - Mid Terrace, yours for £130,000

Nestled in the charming area of Botley, Southampton, this delightful mid-terrace house at 9 Augusta Close offers a perfect blend of comfort and convenience. With two generously sized bedrooms, this property is ideal for small families, couples, or single occupants.

Don't miss the chance to call this lovely house your home! Contact Sarah today for more information.



Pricing

SHARE EXAMPLE

40% share £130,000

FULL PRICE

£325,000

MONTHLY RENT

£483.82 from April 25

MONTHLY SERVICE CHARGE

£39.89 from April 25

About the home

This charming 2-bedroom terraced house is nestled in a peaceful cul-de-sac.

As you enter, you're greeted by a welcoming entrance hall with carpeting and a convenient downstairs cloakroom. The spacious living room is also carpeted, providing a cosy space for relaxation and entertaining. The kitchen features laminate flooring, an electric hob and oven, and a dishwasher included. There is ample space for a fridge/freezer and a washer/dryer, making it a practical and functional space.

Both generously sized bedrooms are carpeted, with Bedroom 1 offering an airing cupboard for extra storage, and Bedroom 2 providing loft access. The bathroom is equipped with a white suite, including a shower over the bath, and laminate flooring.

Outside, you'll find both front and rear gardens. The rear garden boasts a well-maintained lawn, flower beds, a patio area, and a shed for additional storage. To complete this property, there is parking space for 2 vehicles.

Other bits to note

Two allocated parking spaces.

Council tax banding: C

Remaining lease term: 119 years

Downstairs cloakroom: 1.21m x 2.00m

Living room: 4.67m x 3.98m

Kitchen: 3.03m x 2.55m

Landing: 1.65m x 1.16m

Bathroom: 3.00m x 2.21m

Bedroom 1: 3.52m x 4.67m

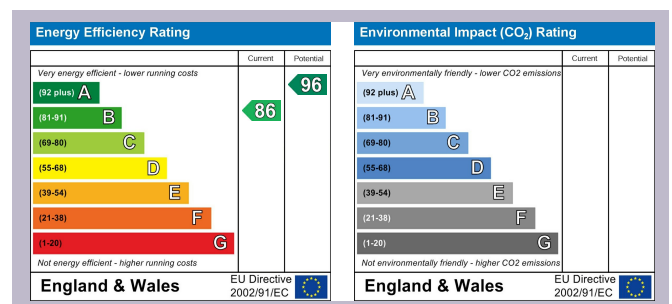
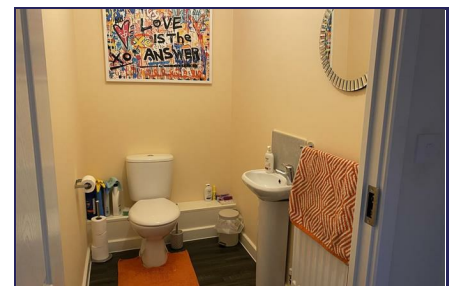
Bedroom 2: 4.78m x 2.38m

Front garden: 4.80m x 1.75m

Rear garden: 11.9m x 5.00m

*Please note there is a local connection requirement to Eastleigh.

**While we endeavour to make our sales particulars fair, accurate and reliable they are only a general guide to the property. Room dimensions and property details have been supplied to us by the current vendor so are for indication purposes only. Accordingly, if there is any point which is of particular importance to you, please contact the office and we will be pleased to check the position for you, especially if you are contemplating travelling some distance to view the property. Shared ownership homes are bought as leasehold properties, for more information speak to our team. Service charges and rent payable on the unsold equity of this property will be reviewed annually with any changes coming into effect on the 1st April each year. Your home may be at risk of repossession if you don't maintain your mortgage and rental payments.



For more details or to book a viewing please contact Sarah Richards:

T: 01749 832 170 M: 07795 318 187 [f/SalesAster](#) [@/SalesAster](#)

E: sarah.richards@aster.co.uk W: Aster.co.uk/sales

ASTER
GROUP