



Whitehouse Park

Podolica Grove, Whitehouse, Milton Keynes, MK8 1LG

A brand new development of 2, 3 & 4 bedroom houses

 ParadigmLiving



Prices
from
£132,000



CONSUMER
CODE FOR
HOME BUILDERS
www.consumercode.co.uk

REGISTER NOW &
ACTIVATE YOUR
FREE GUARANTEE
0800 032 8936
1 800 818 530

£ Prices from **£132,000 (40% share)**

% Share available **40%-70%**

🛏 **2 & 3 bedrooms**



We are pleased to offer these 2 and 3 bedroom houses available through Shared Ownership, located in Whitehouse Park, Milton Keynes.



Whitehouse Park KEY FEATURES

Bathroom suite and thermostatic shower

Carpet throughout living areas

Amtico flooring in kitchen, bathroom & downstairs toilet

Gas central heating

Allocated parking

Fitted kitchen with integrated oven and hob

Washer/dryer and fridge freezer

Enclosed private garden

These particulars do not constitute any part of an offer or contract. Any intended purchasers must satisfy themselves as to the correctness of each of the statements contained in these particulars. All floor layouts may be subject to changes. The dimensions given on the plan are subject to minor variations intended for guidance only and are not to be used for carpets, appliances or items of furniture.



Two Bedroom House

Plots 57, 58*, 59*

(* handed)

KITCHEN

6'11" x 12'3" 2.13m x 3.74m

LIVING ROOM

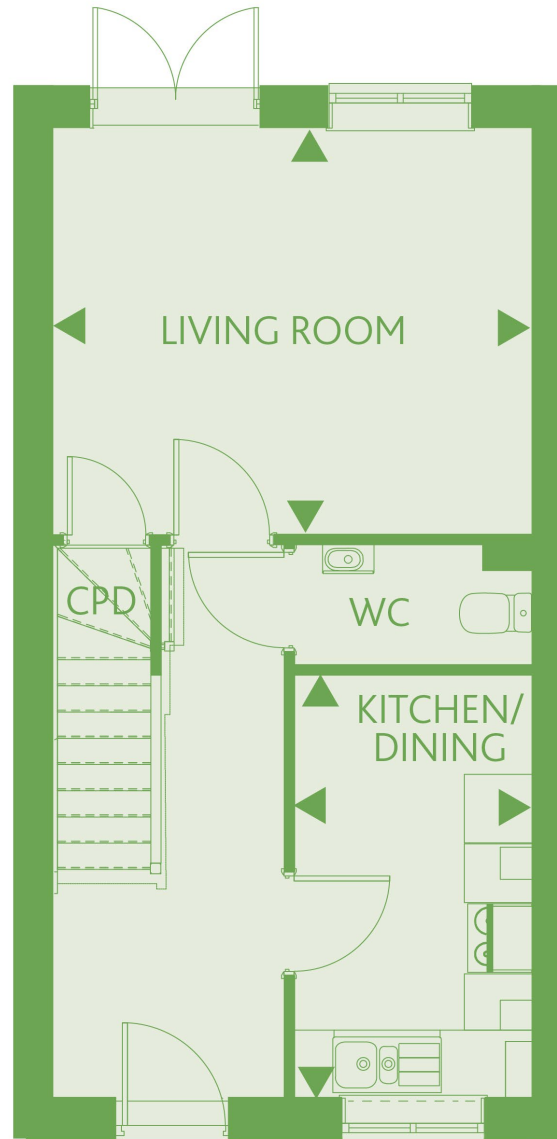
13'10" x 11'9" 4.24m x 3.60m

BEDROOM 1

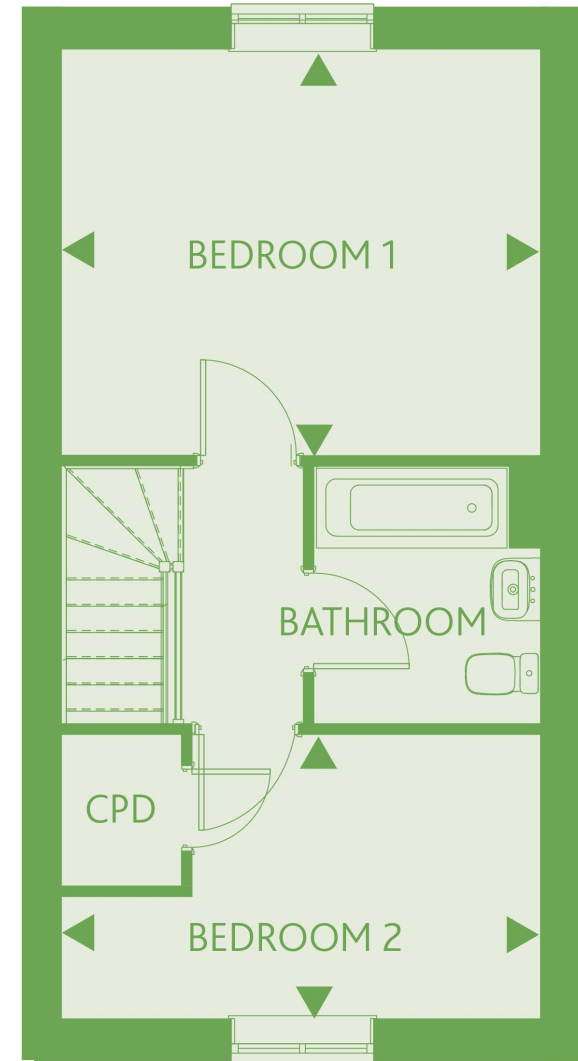
13'10" x 11'9" 4.24m x 3.60m

BEDROOM 2

13'10" x 8'3" 4.24m x 2.52m



GROUND FLOOR



FIRST FLOOR

These particulars do not constitute any part of an offer or contract. Any intended purchasers must satisfy themselves as to the correctness of each of the statements contained in these particulars. All floor layouts may be subject to changes. The dimensions given on the plan are subject to minor variations intended for guidance only and are not to be used for carpets, appliances or items of furniture.





Three Bedroom House

Plots 54, 55*

(* handed)

KITCHEN/DINING

9'8" x 11'8" 2.95m x 3.57m

LIVING ROOM

16'6" x 11'0" 5.03m x 3.36m

BEDROOM 1

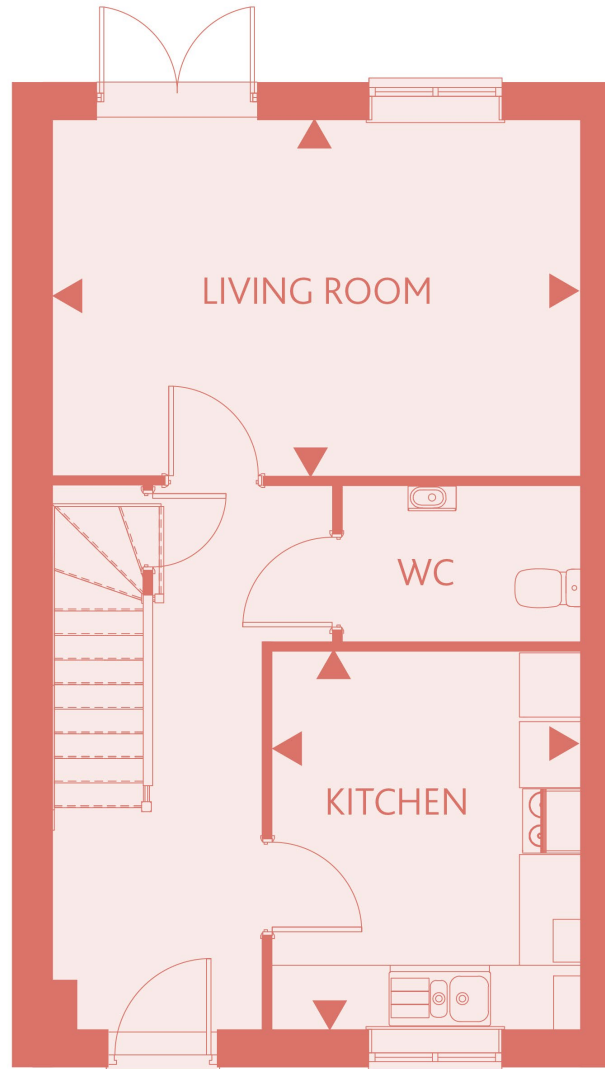
9'1" x 16'6" 2.77m x 5.04m

BEDROOM 2

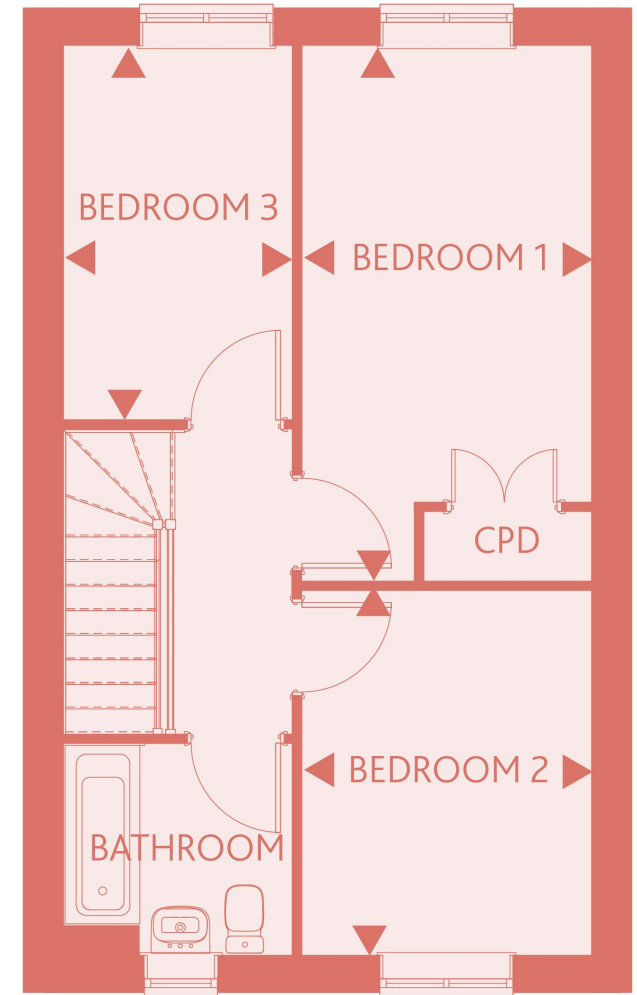
9'1" x 11'3" 2.77m x 3.45m

BEDROOM 3

7'1" x 11'6" 2.18m x 3.53m



GROUND FLOOR



FIRST FLOOR

These particulars do not constitute any part of an offer or contract. Any intended purchasers must satisfy themselves as to the correctness of each of the statements contained in these particulars. All floor layouts may be subject to changes. The dimensions given on the plan are subject to minor variations intended for guidance only and are not to be used for carpets, appliances or items of furniture.



SITE PLAN



These particulars do not constitute any part of an offer or contract. Any intended purchasers must satisfy themselves as to the correctness of each of the statements contained in these particulars. All floor layouts may be subject to changes. The dimensions given on the plan are subject to minor variations intended for guidance only and are not used for carpets, appliances or items of furniture.

////// ParadigmLiving

For more information

0300 303 8046

www.paradigmliving.co.uk

These particulars do not constitute any part of an offer or contract. Any intended purchasers must satisfy themselves as to the correctness of each of the statements contained in these particulars. All floor layouts maybe subject to changes. The dimensions given on the plan are subject to minor variations intended for guidance only and are not be used for carpets, appliances or items of furniture.

