

# The Willow Orchard View

3-bedroom home, sleeps 5



3 |

2 |

1 |



Artist's impression

## Key features

- Two double bedrooms
- Downstairs W.C.
- En-suite from master bedroom
- Open plan kitchen and dining room
- Separate living room
- Driveway parking



**The Willow**  
Available plots

**Rent to Buy**

11, 353, 354

**Shared Ownership**

10, 321, 322, 355

**Outright Sale**

12

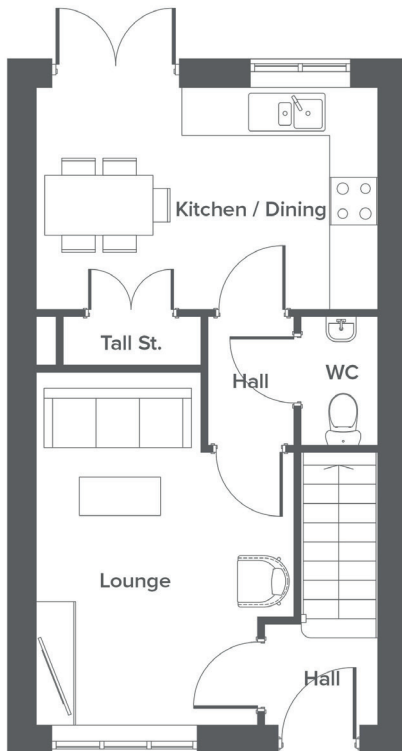
**Hargreaves Road, Northwich, CW9 7BL**

A selection of 2, 3 & 4-bedroom houses and one bedroom apartments

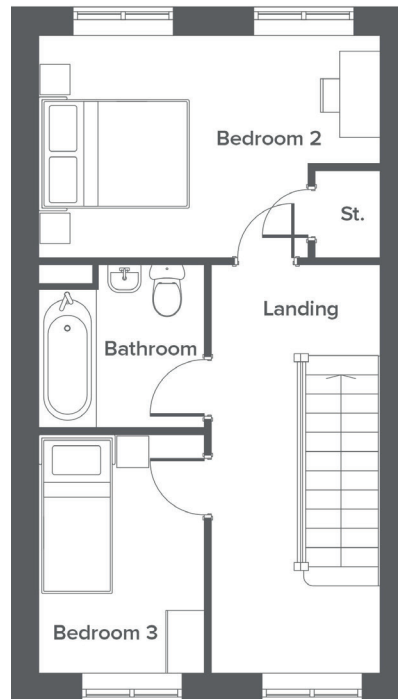
# The Willow Orchard View

3-bedroom home, sleeps 5

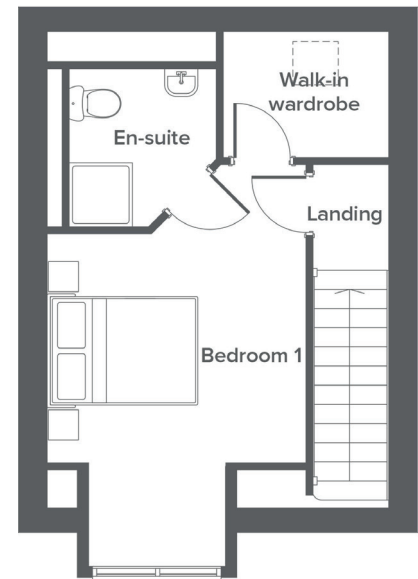
Ground floor



First floor



Second floor



Total size **90 m<sup>2</sup> / 969 ft<sup>2</sup>**

Ground Floor	Metric	Imperial
Kitchen / Dining	4.3 x 2.8	14'2" x 9'2"
Lounge	3.2 x 4.4	10'8" x 14'7"
WC	1.0 x 1.6	3'3" x 5'2"

First Floor	Metric	Imperial
Bedroom 2	4.3 x 2.8	14'2" x 9'3"
Bedroom 3	2.1 x 3.0	6'11" x 9'11"
Bathroom	2.1 x 2.0	6'11" x 6'9"


Second Floor	Metric	Imperial
Bedroom 1	3.2 x 5.0	10'8" x 16'5"
En-suite	1.8 x 2.0	6'1" x 6'7"
Walk-in wardrobe	2.1 x 1.6	6'11" x 5'2"

## Get in touch

 **01606 218072**

 **yourhousinggroup.co.uk**

 **yhgtv**

 **@yourhousing**

 **yourhousinggroup**