



Persona Homes

by Home Group

ARLINGTON

THE MEADOWS AT FELSTED

3-bedroom house

A stunning home perfect for modern family living.
With ample storage and a handy cloakroom, there is room for all!



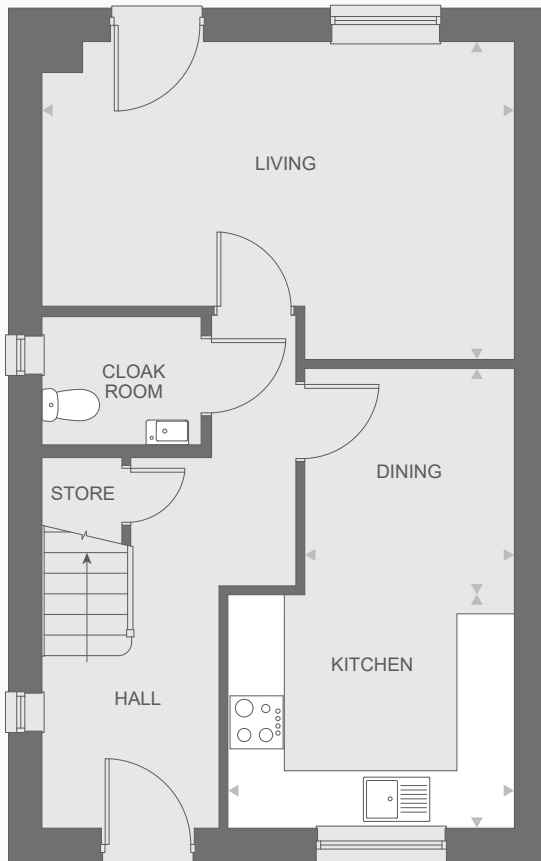
Contact us:

T: 0800 030 8888

E: contactus@yourpersonahome.com

W: yourpersonahome.com

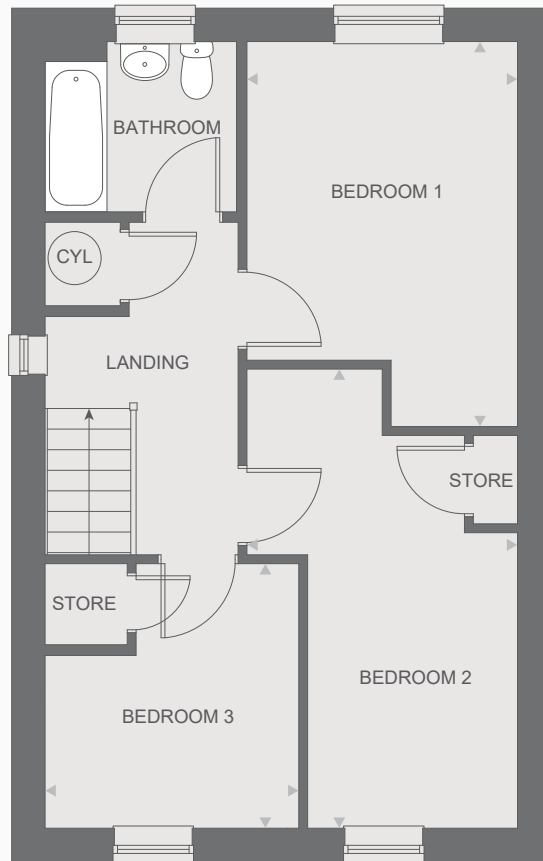
Clifford Smith Drive, Felsted, CM6 3UG



Ground floor

Ground floor

Living room	5.34m x 3.59m
Kitchen	3.24m x 2.64m
Dining	2.37m x 2.56m



First floor

First floor

Bedroom 1	4.35m x 3.06m
Bedroom 2	5.19m x 3.06m
Bedroom 3	2.99m x 2.87m
Total area	95.04 m²



Any floor plans are a general outline of the layout of the property for guidance only. All measurements are approximate and may vary and any intending purchasers should not rely on them as statements of fact or representations of fact but must satisfy themselves by inspection or otherwise as to their accuracy. Dimensions shown are not intended to be relied upon for installation of appliances or items of furniture or otherwise. CGI's and images are for illustrative purposes only. Specifications are subject to change. Images are indicative only and may be of previous developments.*Journey times and distances taken from [google.com/ maps](https://www.google.com/maps) and are correct before going to print. All times and distances listed are approximate and may vary depending on time of travel.